

Sul Ross State University Scholarship Application Instructions

1. Click on 'Sign In With Your Institution'.

Opportunities

You need to sign in or sign up before continuing.

Applicants and Administrators References and Reviewers

Welcome!

If you are an Applicant or Scholarship Administrator, please sign in using your Lobo ID and password. If you need help with your Lobo ID or password, please click on [trouble signing in](#).

Please note: If you are a Reviewer or Reference Provider, please click the "References and Reviewers" tab above and sign in using your email address and password you chose when you confirmed your account.

Sign In With Your Institution

2. Use your LoboID and email password to log in.

SUL ROSS

LoboID (Login):

Password:

LOGIN

For security reasons, please Log Out and Exit your web browser when you are done accessing services that require authentication!

Forgotten Password?

LoboPass/Password Reset (click here)

Click Here for User Guide to LoboPass/Password

Phone Support:

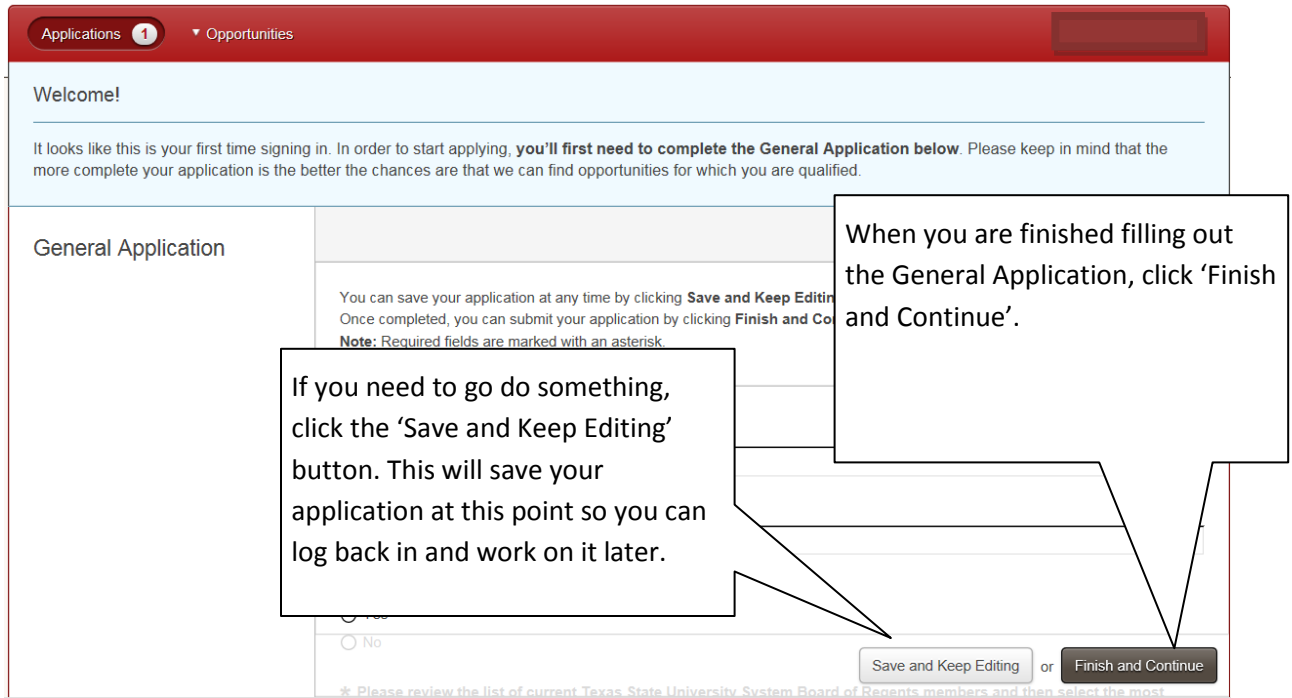
Number: 432-837-8888 (x8888)

Toll Free number: 1-888-837-2882

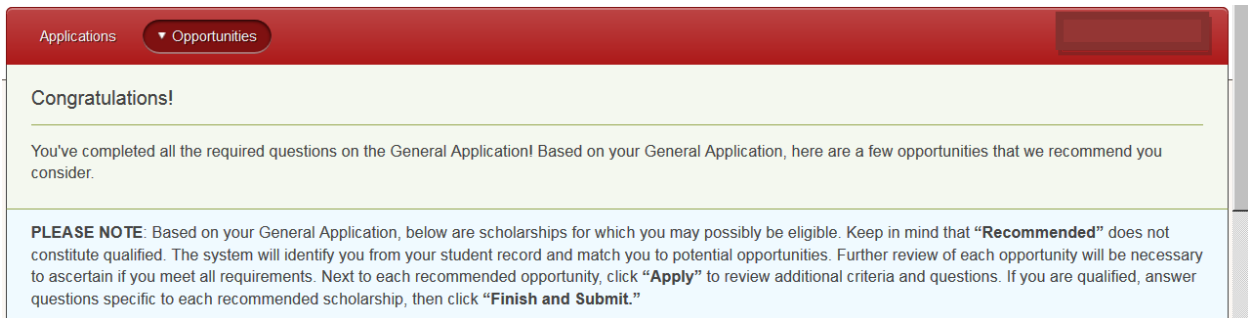
For phone support to help you navigate LoboPass, please call either of these.

If you do not know your LoboID, or need to reset your email password, please click 'click here' to go to LoboPass Management System. You will need your student ID (A#) and 6 digit PIN. If you do not know your student ID (A#) and/or your 6 digit PIN, please call 432-837-8404.

- The opening page will welcome you and ask you to please complete the General Application. Please do so at this time.



- Second page will Congratulate you in completing the General Application.

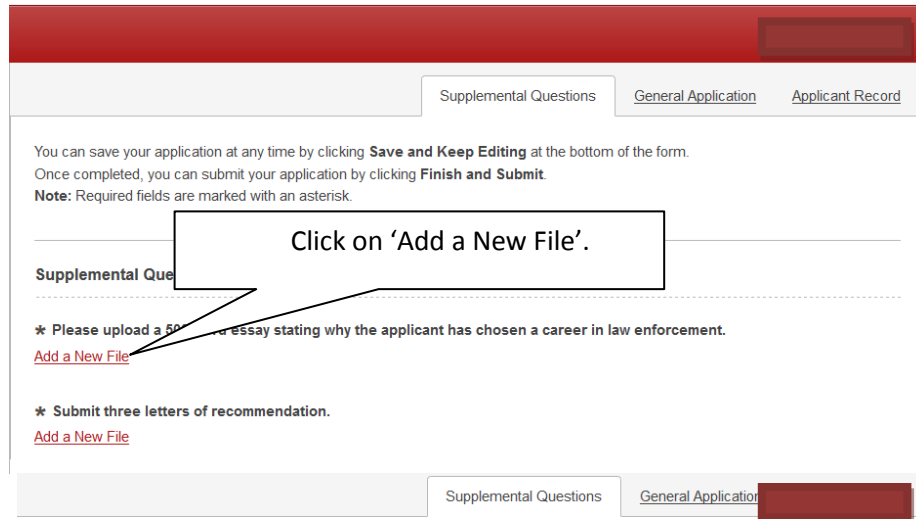


You will also be given a list of recommended scholarship opportunities you can apply to.

Review all recommended opportunities. As you read the short descriptions, if the scholarship looks like something you may be interested in applying for, click the apply button.

Recommended Opportunities				
Name	Questions	Deadline	Award	Actions
<p>Alumni Association</p> <p>Must be a descendant or relative, by blood or adoption, of an alumni of SRSU. Beginning freshman: must be unconditionally admitted. Returning...</p>	1	09/30/2014	\$500.00	Apply
<p>Eagle Pass Rotary Scholarship</p> <p>Eagle Pass High School or C. C. Winn High School graduate. Education majors. Must be a resident of Eagle Pass and Maverick County.</p>	1	09/30/2014	\$0.00	Apply
<p>Esmeralda Rosalia Avalos Nursing Scholarship</p> <p>Scholarships are available for Fall & Spring. Full admission to the BSN programs at SRSU-Rio Grande College. Must have a cumulative GPA of 2.75...</p>	3	09/30/2014	\$0.00	Apply
<p>Esmeralda Rosalia Avalos Teacher Education Scholarship</p> <p>Scholarships are available for Fall & Spring. Eligible for admission to the SRSU-Rio Grande College teacher education program. Must have a...</p>	2	09/30/2014	\$0.00	Apply

6. Some scholarship applications require an essay. Please follow these steps to upload a file.



You can save your application at any time by clicking **Save and Keep Editing** at the bottom of the form. Once completed, you can submit your application by clicking **Finish and Submit**. **Note:** Required fields are marked with an asterisk.

Supplemental Questions

* Please upload a 500 word essay stating why the applicant has chosen a career in law enforcement.

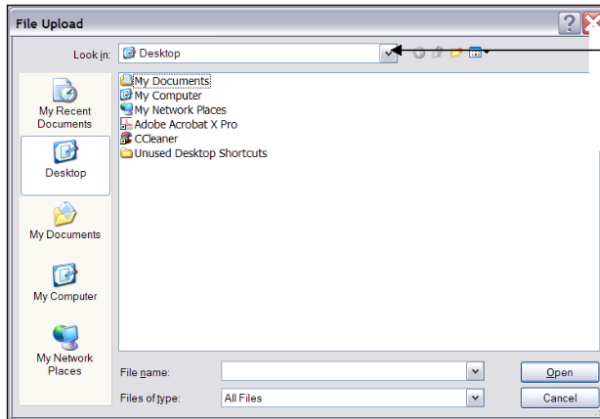
Add a New File

Browse

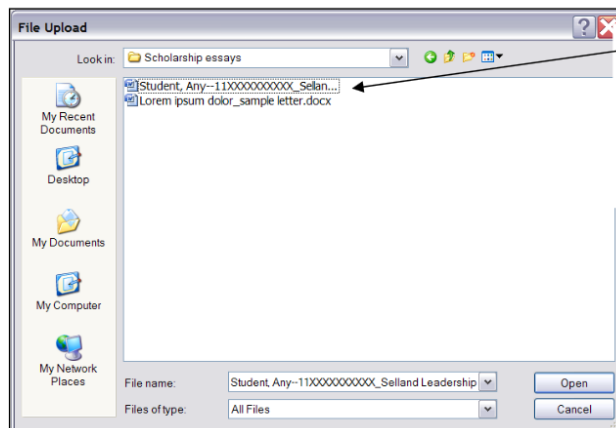
Click on 'Browse'.

* Submit three letters of recommendation.

Add a New File



• Navigate through the File upload window to where your document is stored on your computer.



• Double click on the file document to attach the saved essay or recommendation letter.

• Can be a .doc, docx., or .pdf file extension for example.