

Sul Ross State University Rio Grande College



FACT BOOK 2004 – 2005

Prepared by the Office of
Institutional Research & Effectiveness



Sul Ross State University Rio Grande College

205 Wildcat Drive
Del Rio, Texas 78840
(830) 768-4075

Rt. 3, Box 1200
Eagle Pass, Texas 78852
(830) 758-5004

400 Sul Ross Drive
Uvalde, Texas 78801
(830) 279-3001

RGC is accredited through the Commission on Colleges of the Southern Association of Colleges and Schools - 1866 Southern Lane, Decatur, Georgia 30333-4097, (404) 679-4501 – to award bachelors and masters degrees

No person shall be excluded from participation in, denied the benefits of, or be subject to discrimination under, any program or activity sponsored or conducted by Sul Ross State University on any basis prohibited by applicable law, including, but not limited to, race, color, national origin, religion, sex, age, or disability.

TABLE OF CONTENTS

Table of Contents	2
Preface	5
Acknowledgements	5
I. Institutional Profile	6
Sul Ross State University Rio Grande College	6
Rio Grande College History	7
Sul Ross State University Rio Grande College Statement	8
Office of Institutional Research & Effectiveness	10
Programs Offered	11
Articulation Agreement	12
Student Organizations	12
Rio Grande College Organizational Chart	13
Department of Education	25
Department of Liberal Arts	25
Department of Business	25
Department of Nursing	25
II. Historical Trends	26
Enrollment by Academic Year	26
Credit Hours by Academic Year	26
RGC Credit Hour History	27
Enrollment by Fall Semester	27
Enrollment by Spring Semester	28
Enrollment by Summer Semester	28
III. Student Profile – Fall 2004	29
Age of Students Attending RGC	29
Enrollment by Gender	29
Enrollment by Ethnicity	30
Students by City of Residence	30
Students by County of Residence	31
Percent First Generation	31
Enrollment by Department	32
Enrollment by Program	32
Students Seeking Teacher Certification	33
Full-time & Part-time Enrollment	33
Enrollment by Level	34
Students by College of Transfer	34
Students Receiving Financial Aid	35

Aggregate Grade Distribution	35
Success Rate	36
Completion Rate	36

IV. Student Profile – Spring 2005 37

Age of Students Attending RGC	37
Enrollment by Gender	37
Enrollment by Ethnicity	38
Students by City of Residence	38
Students by County of Residence	39
Percent First Generation	39
Enrollment by Department	40
Enrollment by Program	40
Students Seeking Teacher Certification	41
Full-time & Part-time Enrollment	41
Enrollment by Level	42
Students by College of Transfer	42
Students Receiving Financial Aid	43
Aggregate Grade Distribution	43
Success Rate	44
Completion Rate	44

V. Student Profile – Summer I & II 2005 45

Age of Students Attending RGC	45
Enrollment by Gender	46
Enrollment by Ethnicity	47
Students by City of Residence	48
Students by County of Residence	49
Enrollment by Department	50
Enrollment by Program	55
Students Seeking Teacher Certification	52
Full-time & Part-time Enrollment	53
Enrollment by Level	54
Students by College of Transfer	55
Aggregate Grade Distribution	56
Success Rate	57
Completion Rate	58
Degrees Awarded	59

VII. RGC Personnel Profile 60

Personnel by Classification, Ethnicity and Gender	60
Personnel by Classification	60
Personnel by Ethnicity	61

Personnel by Gender	61
Faculty by Degree	62
Faculty by Years of Service	62
Faculty by Ethnicity & Gender	62
Faculty by Department	62
Section Staffing	63
Staffing: Full-time v Adjunct	63
VII. Financial Profile	64
Tuition & Fees Schedule	64
Financial Aid Awarded	65
RGC Revenues Academic Year 2004-2005	66
RGC Expenditures Academic Year 2004-2005	67

Preface

Sul Ross State University Rio Grande College has served the citizens of the Middle Rio Grande region for over three decades. During this period RGC has grown not only in enrollment but also, and importantly as an agent of change and opportunity. As the only upper level institution within 150 miles, RGC plays a critical role in meeting the needs of its communities.

At our three major campus sites, RGC provides services to a region that approximates 19,000 square miles. Within the 19,000 square miles of RGC service area, the institution serves a population of approximately 279,937. RGC is a comprehensive upper level institution with an established partnership with Southwest Texas Junior College, more than 22 school districts within the region, as well as sister institutions in Mexico.

We are proud our history. We stand ready to continue to meet the needs of the region and to prepare our students for a better tomorrow. RGC is an A++++ college; we are Accountable, we are Adaptable, we are Accessible, and we are Affordable. RGC, we are your future.

Acknowledgements

Dr. Joel E. Vela, Vice President Rio Grande College
Dr. Frank Abbott, Dean Rio Grande College
Dr. Gregory Stone, Chair, Liberal Arts Department
Dr. Terry Carson, Chair, Business Administration Department
Dr. Barbara Tyler, Chair, Education Department
Claudia Wright, Director Admissions and Records
Carolyn Todd, Director of Business Services
Ricardo Vásquez, Director Public and Media Relations
Lucio García-Zuazua, Assistant Director Financial Aid
Daniel Ayala, Director Student Services

Included in the Sul Ross State University Rio Grande College Fact Book are general statistics about the institution and its student population. The information provided comes from collection of data by the Office of Institutional Research and Effectiveness and the Texas Higher Education Coordinating Board reports.

I. INSTITUTIONAL PROFILE

Sul Ross State University Rio Grande College

TYPE OF INSTITUTION: Public, upper level with campuses in Eagle Pass, Del Rio, and Uvalde established in 1973 as a part of Sul Ross State University in Alpine, Texas. Rio Grande College offers junior, senior and graduate (Masters) level courses.

ENROLLMENT: The enrollment at Rio Grande College has steadily risen since its inception in 1973. In the Fall of 1991 the enrollment was 547 students. A decade later in the Fall of 2001 enrollment reached 810 students. Fall enrollment for 2003 stood at 950, by Fall of 2004 it had increased to 1006.

AGE: RGC serves older, nontraditional students. Based on the Fall 2004 Semester the average age for first time new transfer students, inclusive of graduates and post-baccalaureate, is 29.71; for undergraduates the average age is 29.22, and for all students including graduates and post-baccalaureate the average age is 31.54.

GENDER: Females makeup nearly three-quarters of the student population at RGC (74 percent for Fall 2004).

ETHNICITY: Based on Fall 2004 enrollment 79% of the students were Hispanic, 16% were White, there was no data for 4%, and 1% made up the remaining.

GRADUATES: During the 2004-2005 Academic Year, Sul Ross State University Rio Grande College awarded 254 degrees (BA, BS, BBA, M.Ed., and MBA)

FULL & PART-TIME: The Fall 2004 figures reflected 29 percent of students attending RGC attended on a full-time basis and 71 percent attended on a part-time basis.

TYPE OF STUDENTS: Based on the Fall 2004 semester, 60 percent of RGC students indicated being first generation; the largest segment of the student population was seniors (38%); 64 percent indicate entering RGC with a degree already earned – minimum AA, and maximum masters; 26 percent of RGC students indicate being married; 32 percent indicate being employed, and 32 percent indicated gross income less than \$20,000.

TRENDS: As more programs are added to those already offered, and bi-national educational agreements are established with Mexican institutions of higher learning in Piedras Negras and Acuña, it is anticipated that RGC's enrollment of U. S. and international students will increase at a slightly higher rate than in previous years.

SERVICE AREA: Rio Grande College serves the thirteen counties of Atascosa, Bandera, Dimmit, Edwards, Frio, Kinney, La Salle, Maverick, Medina, Real, Uvalde, Val Verde and Zavala.

The Rio Grande College History

Del Rio, Eagle Pass, and Uvalde

The Rio Grande College of Sul Ross State University, with sites at Del Rio, Eagle Pass, and Uvalde, serves thirteen counties in Southwest Texas. Sometimes referred to as the Southwest Texas Badlands, this area is known for its fields of purple sage and its Old West ambiance. In this atmosphere, the College works continually towards higher standards of excellence in teaching and learning. The Rio Grande College offers junior, senior, and graduate coursework with programs in Liberal Arts, Business, and Teacher Education. Some courses are also offered on the Laughlin Air Force Base near Del Rio.

Begun originally as the Sul Ross State University Study Center, the College was renamed the Uvalde Study Center in 1985, and again the Uvalde Center in 1989. Recognizing its service to the broad area of the Middle Rio Grande and Wintergarden regions of Texas, the Legislature renamed it Sul Ross State University Rio Grande College in 1995. Sul Ross and the southwest are closely tied. The blending of the Hispanic and Anglo heritages makes Sul Ross perfect for anyone who seeks intellectual development with emphasis on the mutual culture that all Americans share.

The student body consists of multi-cultural, traditional, and non-traditional students. Campus activities and opportunities are designed for everyone. Activities include a calendar of programming events, publication of students' creative writing, a student newspaper, a yearbook, and five student organizations: the International Reading Association, the National Council for Teachers of English, a service learning club, a business club, and an editor's club. Additionally, the College students participate in an annual leadership retreat. The Education Department sponsors the annual "Issues in Education" lectures; the Liberal Arts Department sponsors trips to cultural activities such as the San Antonio Ballet and Shakespeare in the Park; and the Business Administration Department offers public lectures with noted experts on business topics. Additionally, tutoring sessions are available in all areas for anyone who would like extra help with his or her studies. Overall, Sul Ross offers a stimulating academic environment with an emphasis on the student.

The College Sites

Del Rio

Del Rio, Texas, sister city of Ciudad Acuña, Mexico, combines the ambiance of Mexico with American culture to form a diversified city. Nearby, the Pecos River joins the Devil's River and the Rio Grande to create Lake Amistad, the ninth largest of its kind in the United States with more than 850 miles of shoreline. Its canyons, cliffs, and caves provide both scenery and a place filled with history. Del Rio is the home of the Whitehead Memorial Museum with its log cabin, cultural folk art exhibit, and numerous other historical displays. A visit to Whitehead is like taking a stroll through history. Judge Roy Bean, "The Law West of the Pecos," is buried here. West of Del Rio is Seminole Canyon State Historical Park where 10,000-year-old pictographs adorn the canyon walls. Del Rio provides a perfect place for learning about life (and education) on the border, and Sul Ross State University Rio Grande College is proud to serve this region.

Eagle Pass

Eagle Pass, located on the border across from Piedras Negras, Mexico, is the center of a thriving international trade community. First established as a camp in 1849, Eagle Pass has grown into a city of over 25,000 people. With a variety of shops and malls, it is the gateway to Piedras Negras' colorful outdoor markets and handiwork of the Mexican tradition. Biculturalism flourishes in Eagle Pass, and it is common for people in Eagle Pass to speak both Spanish and English. In this atmosphere, Sul Ross State University Rio Grande College strives to bring together diverse cultures.

Uvalde

Uvalde is a relatively old township in Southwest Texas. Settled in 1853, it served as a trading post for area settlers and forts along the Nueces River. Prior to Texas' annexation, many battles were fought along the Nueces River in an attempt to settle the boundary dispute between Texas and Mexico. Turn of the century architecture is still evident in Uvalde. Nestled along tree shaded streets are many elegant old homes, dating back to the late 1890s and early 1900s. Many storied houses with long porches, balconies, and tall graceful columns preserve a testament to the past. The huge old oaks that were so numerous in the area are so loved by the city that many streets are built around the trees.

Sul Ross State University Rio Grande College Statement

MISSION:

Sul Ross State University was created by act of the Thirty-Fifth Legislature of Texas in 1917 as a state normal college with the primary purpose of preparing teachers for the public schools of West Texas. In 1921 the mission was expanded to provide course work in general academic requirements equivalent to two years of college. In 1923 the State Legislature changed the name of the institution to Sul Ross State Teachers College, and course work was added leading to baccalaureate degrees in liberal arts disciplines. Master's degree studies were added in 1930. With name changes in 1949 to Sul Ross State College, and again in 1969, to Sul Ross State University, the institution continued to have a broadened mission. The Sul Ross State University upper level component was established in 1973 by Coordinating Board authority, and in 1989 the Texas Legislature established it as part of the university.

The Rio Grande College, located on the campus of Southwest Texas Junior College, offers educational programs for a thirteen-county region of the Southwest Texas not served by any other senior-level institution of higher education. The student body reflects the population of the area, which includes a large percentage of students from rural settings and a mixture of ethnic groups. Additionally, the University attracts students from several states and foreign countries.

As a coeducational, comprehensive, public institution of higher education offering certificate programs and associate, baccalaureate, and master's degree programs, Sul Ross State University has three major functions: teaching, research, and public service. The University provides an atmosphere conducive to the free exchange of ideas, to the fostering of an appreciation of diversity, and to the development of professionalism among all who participate in its activities and services.

Sul Ross State University provides effective faculty and staff, appropriate facilities, plus relevant instructional resources, student life programs, and support services to enhance teaching and other

opportunities for learning. The University supports research and scholarship to advance knowledge, to facilitate teaching, to encourage professional development, and to utilize the distinctive environment of the Big Bend and Middle Rio Grande areas of Texas. Athletic, cultural, educational, and intercollegiate activities serve as the focus for the public service endeavors of the University.

The ultimate outcome of higher education enables the individual to utilize knowledge and skills for personal growth and professional development. To this end, the University seeks to cultivate in its students:

Mastery of analytical, communication, and computational skills: Students will be able to analyze statements and situations and use logical processes to solve problems; to communicate effectively orally and in writing; and to solve quantitative problems at or above the level of college algebra.

Mastery of a general body of knowledge: From the general education core curriculum, students will acquire a common set of intellectual, physical, and aesthetic experiences designed to give them a breadth of knowledge.

Competency in an area of specialization: Students will acquire in-depth knowledge of major issues, techniques, and theories in one or two subject areas. Graduates will be able to function as entry-level practitioners in professions that are related to their area of specialization; achieve advanced levels of professional development; and/or enter and successfully complete graduate programs of study.

Integrity, tolerance, and ethical values: Students will develop qualities of good citizenship including an appreciation for and commitment to living and performing their work conscientiously; they will learn to recognize, respect, and understand cultural diversity; and they will learn to recognize the implications of what they believe.

Attitudes and skills leading to life-long learning: Students will acquire the skills and techniques which enable them to engage in self-learning and a spirit of intellectual curiosity leading to independent and purposeful life-long learning.

Office of Institutional Research & Effectiveness

Mission: To assist in the furtherance of the goals of Sul Ross State University Rio Grande College by working with other offices, faculty, and staff in collection of internal data; to assist with academic research; to assist with submission of reports and grants, and to assist with evaluation and assessment of programs ensuring effectiveness of all facets of the university's services.

Goals:

1. Assist internal and external offices and personnel by providing support to colleagues and outside stakeholders that will assist them in completion of their work.
2. Assist faculty and outside stakeholders involved in academic research.
3. Work with faculty, staff and other university offices to enhance the quality and effectiveness of the services provided by the institution.
4. Prepare data and offer assistance to internal and external stakeholders to ensure their success, and the success of the university.
5. Collect, maintain, evaluate, assess and use institutional data to create effective plans to reach well thought-out objectives.
6. Contribute to the institution-wide effort to provide the type of programs and services that will present the university in a positive light.
7. Prepare and distribute educational and demographic data for each semester to faculty and university offices.

Programs Offered

Provisional Teacher Certification

- Bilingual Generalist EC-4
- Bilingual Generalist 4-8
- English Language Arts & Reading 4-8
- English Language Arts & Reading 8-12
- Generalist EC-4
- Generalist 4-8
- History 8-12
- Mathematics 4-8
- Mathematics 8-12
- Social Studies 4-8
- Social Studies 8-12
- Spanish 6-12

Bachelors Programs

Currently, Rio Grande College offers the Bachelor of Arts in:

- English
- Psychology
- Spanish
- History
- Social Science
- Interdisciplinary Studies

Bachelor of Science in:

- Biology
- Mathematics
- Criminal Justice
- Interdisciplinary Studies

Bachelor of Business Administration in:

- General Business
- Management Information Systems
- International Trade with Mexico

Students may earn teacher certification at the elementary level in Interdisciplinary Studies with areas of specialization in Bilingual Education, Language Arts, History, Mathematics, Social Studies, Spanish, or as a Generalist. At the secondary level teacher certification may be obtained in the areas of English, History, Mathematics, Social Sciences, or Spanish. All undergraduate degrees have been fully articulated with Southwest Texas Junior College. For degree requirements, see the University Catalog.

In addition to obtaining teacher certification in the areas noted above, a student may obtain a Bilingual teaching endorsement.

Masters Programs - Education

- Masters of Education with Major in School Administration
- Masters of Education with Major in Supervision
- Masters of Education with Major in Counseling
- Masters of Education with Major in Reading Specialist
- Masters of Education in Bilingual Education
- Masters of Education in Special Education
- Masters of Education

Students may obtain a general Master's Degree in Education. Other master's programs lead to professional certification in guidance and counseling, reading specialist, supervision, bilingual education, special education, as an educational diagnostician, in mid-management and professional superintendent.

Masters Programs – Business Administration

➤ Masters of Business Administration – General Business

Articulation Agreements

Sul Ross State University Rio Grande College has an articulation agreement with Southwest Texas Junior College (SWTJC). The agreement guarantees that students who follow the plan can transfer their first two years of college work with SWTJC to RGC. The articulation agreement encompasses all undergraduate majors.

RGC accepts credit from other institutions accredited by regional accreditation authorities. As a fully accredited institution other institutions of higher learning accept the coursework provided by RGC.

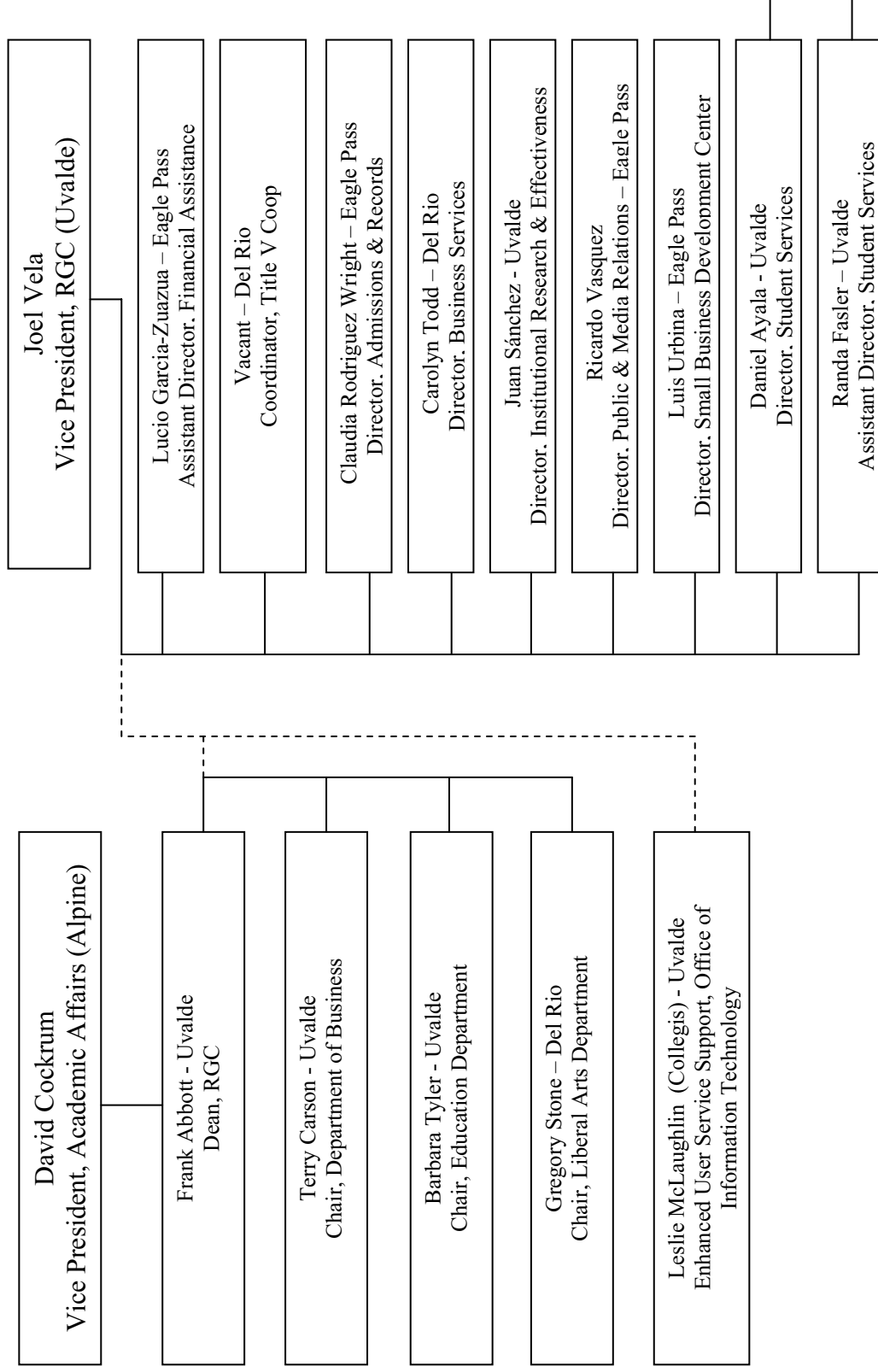
Student Organizations

Students are provided opportunities to join various clubs as a means of enhancing their interpersonal skills, interacting with other students, interacting with the administration, and, working towards the betterment of the institution.

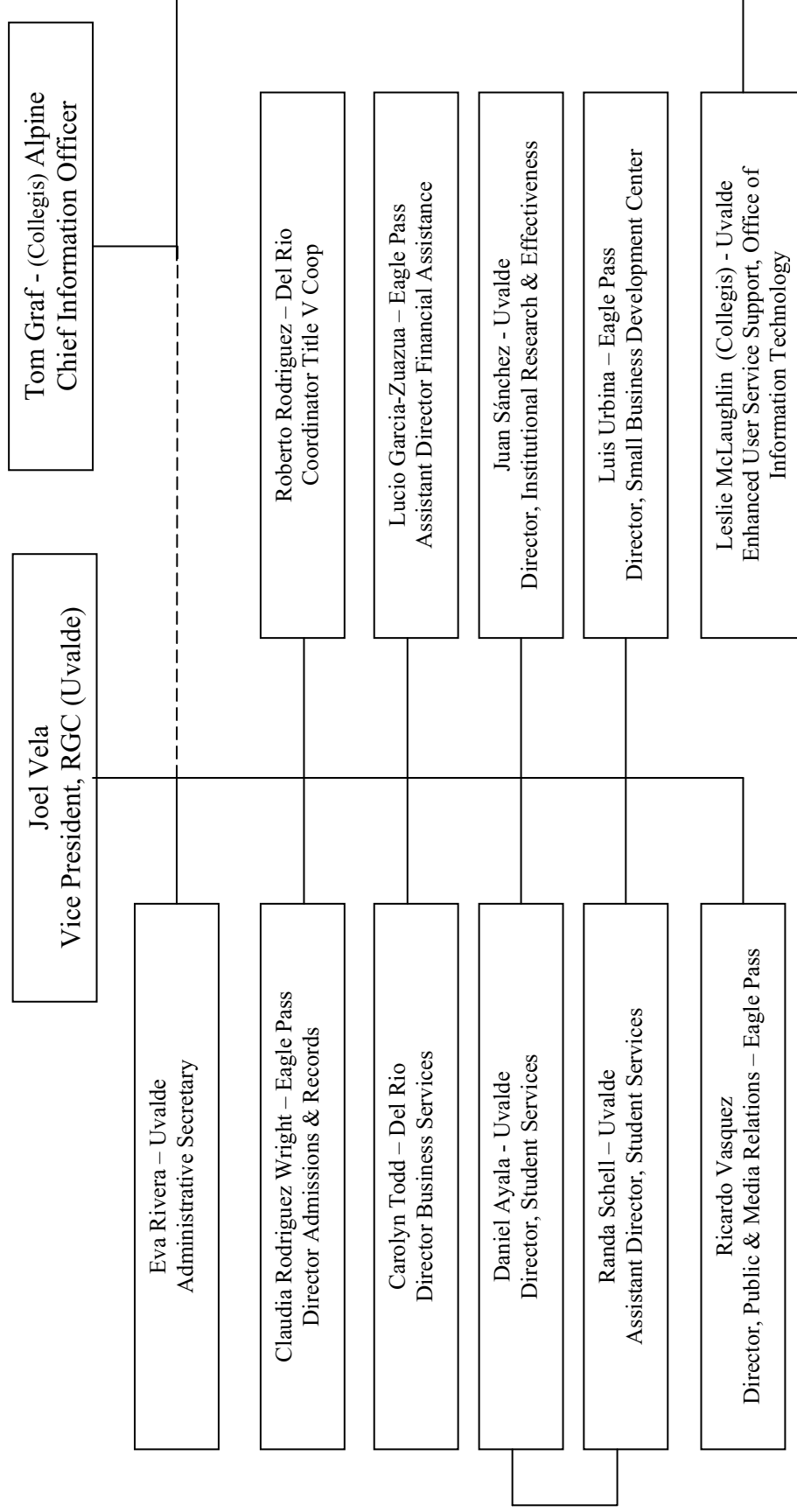
The following are the student organizations that have been established at RGC.

Criminal Justice Organization
Folklore Club
Future Educators Club
Shakespeare Club
Psychology Service Learning Club
Writers' Club
Society of Biologist
Club Wattsell

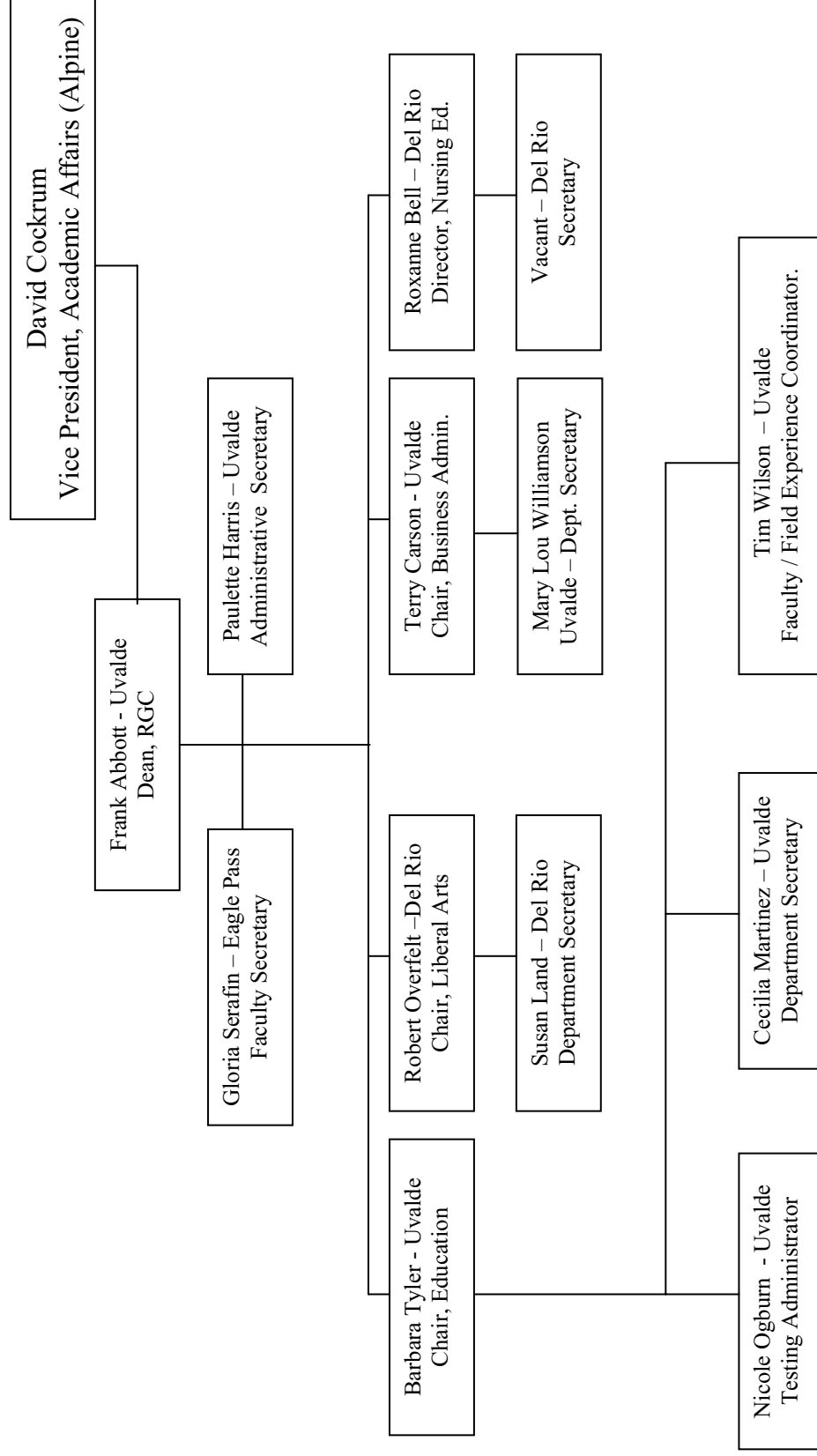
Rio Grande College



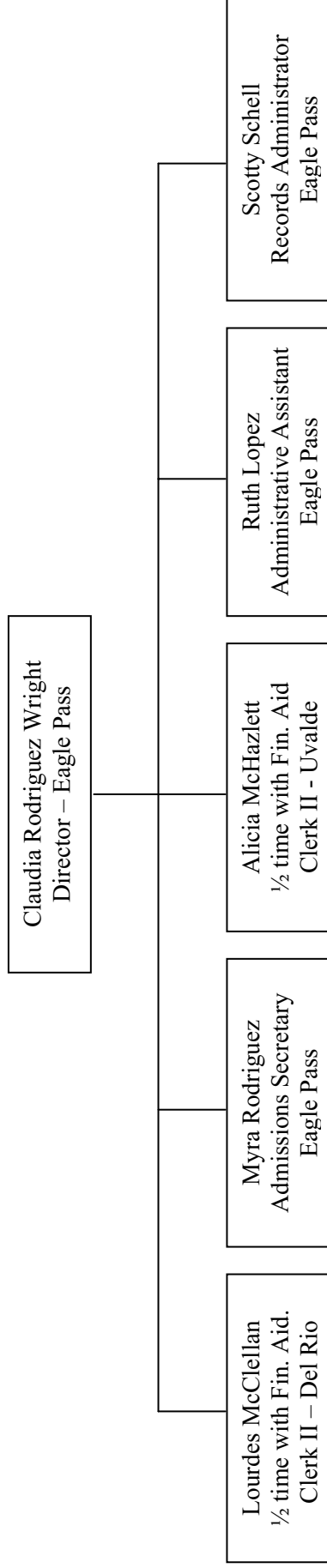
Office of the Vice President



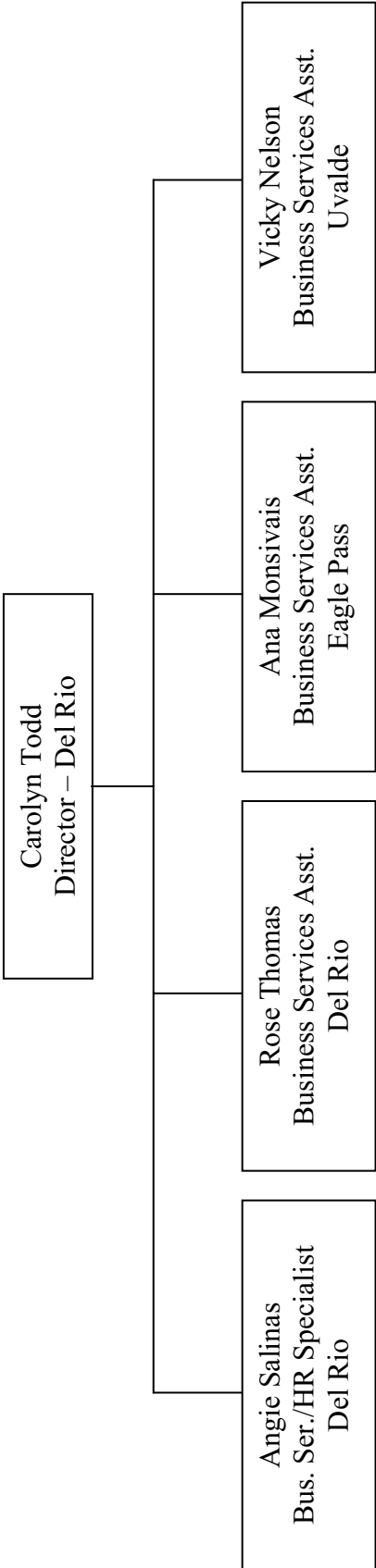
Academic Affairs



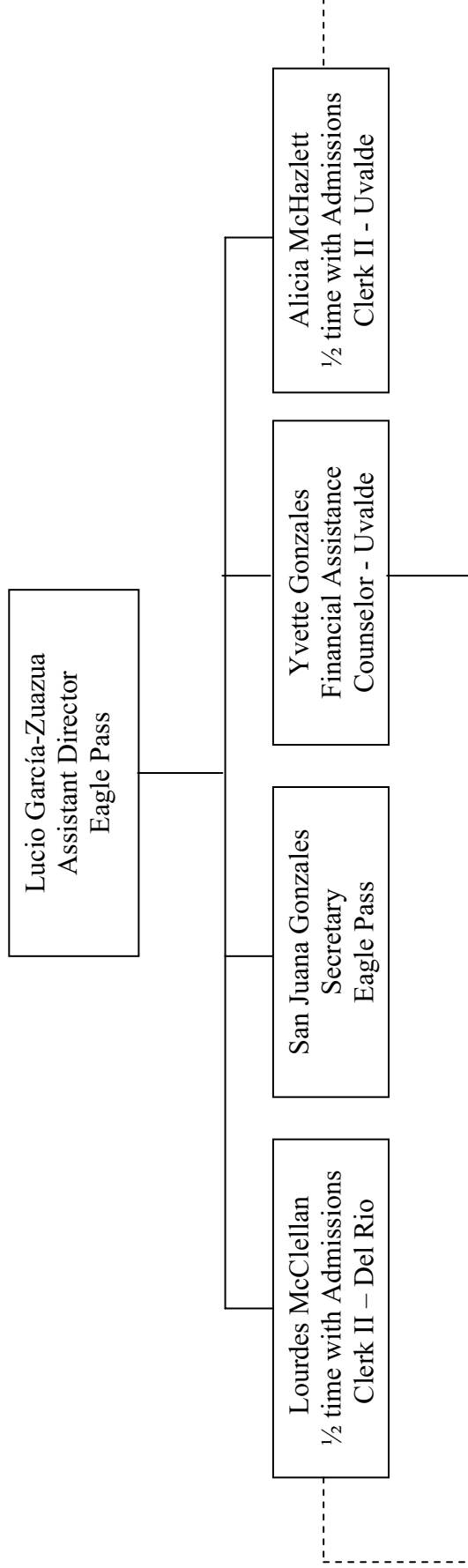
Admissions & Records



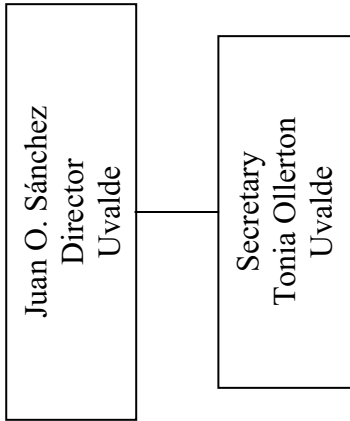
Business Services



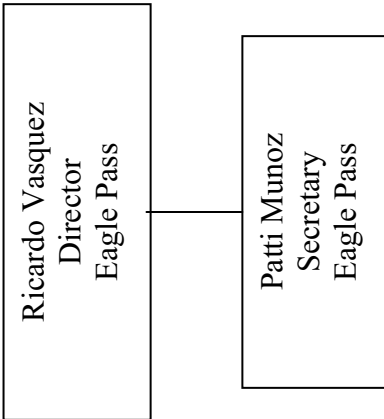
Financial Assistance



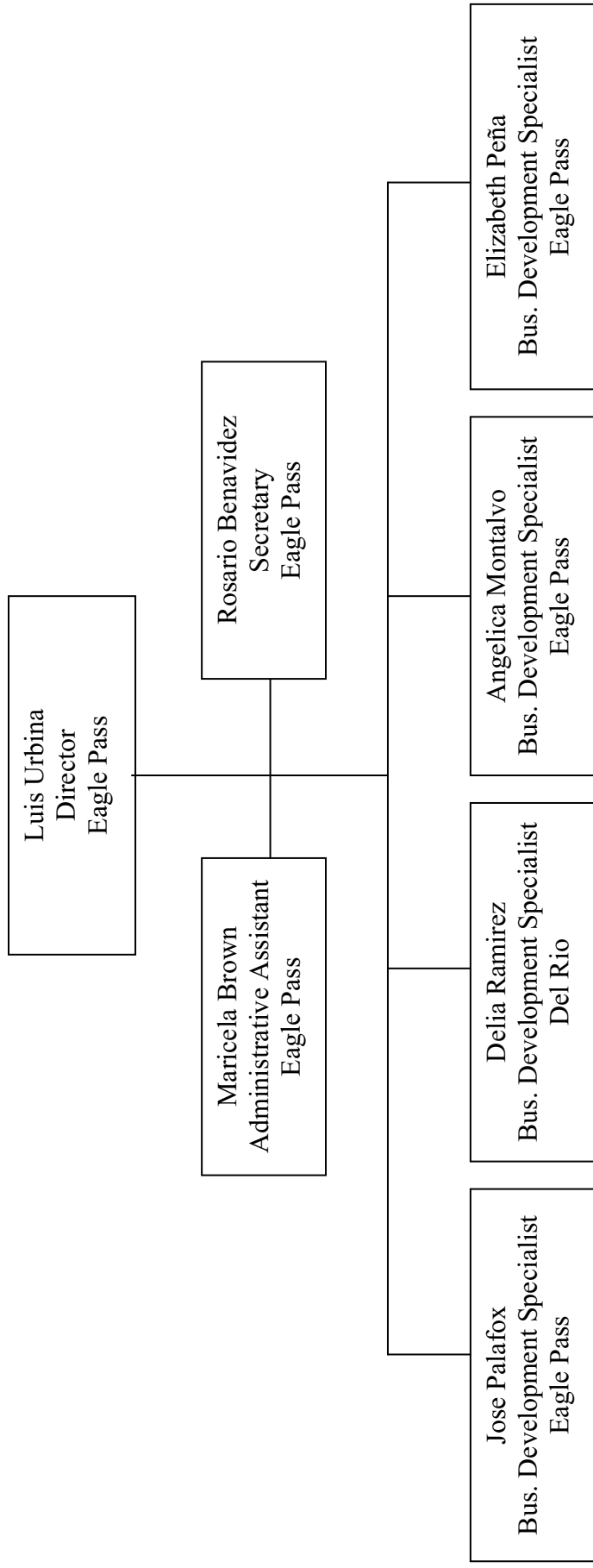
Institutional Research & Effectiveness



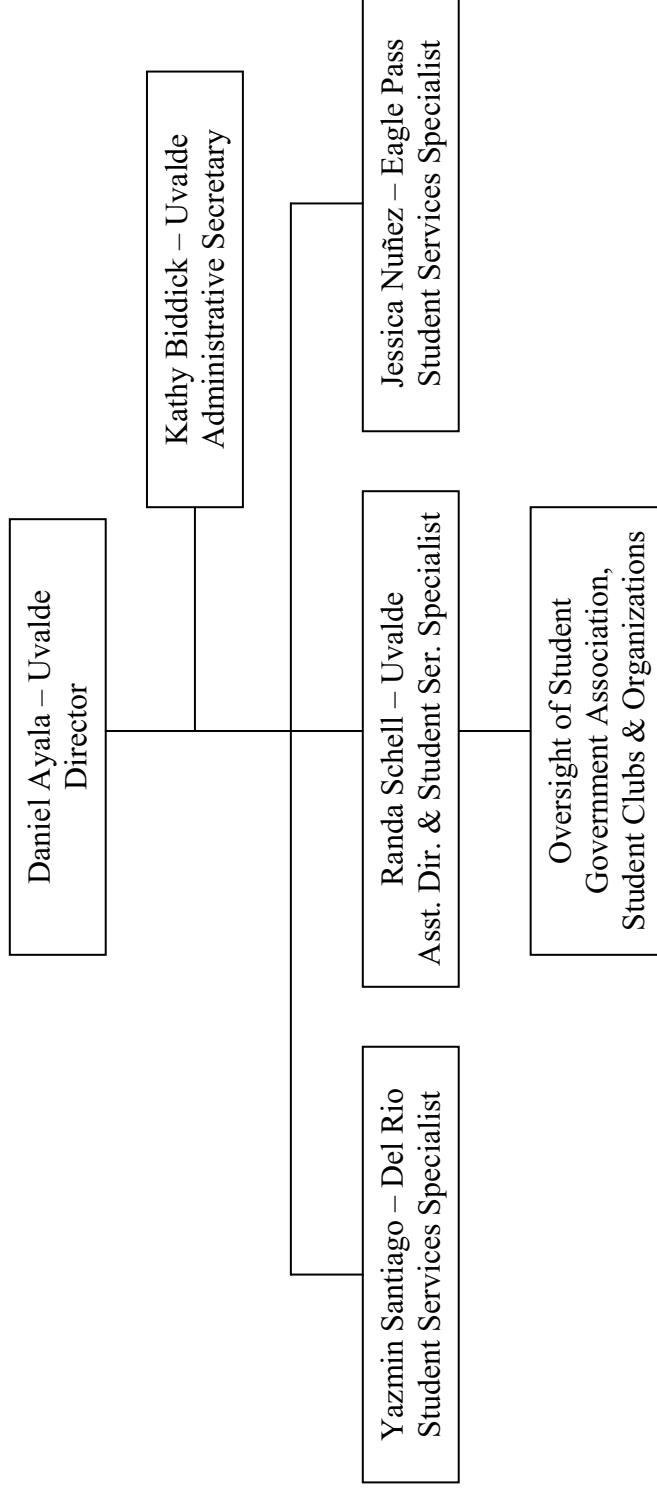
Public & Media Relations



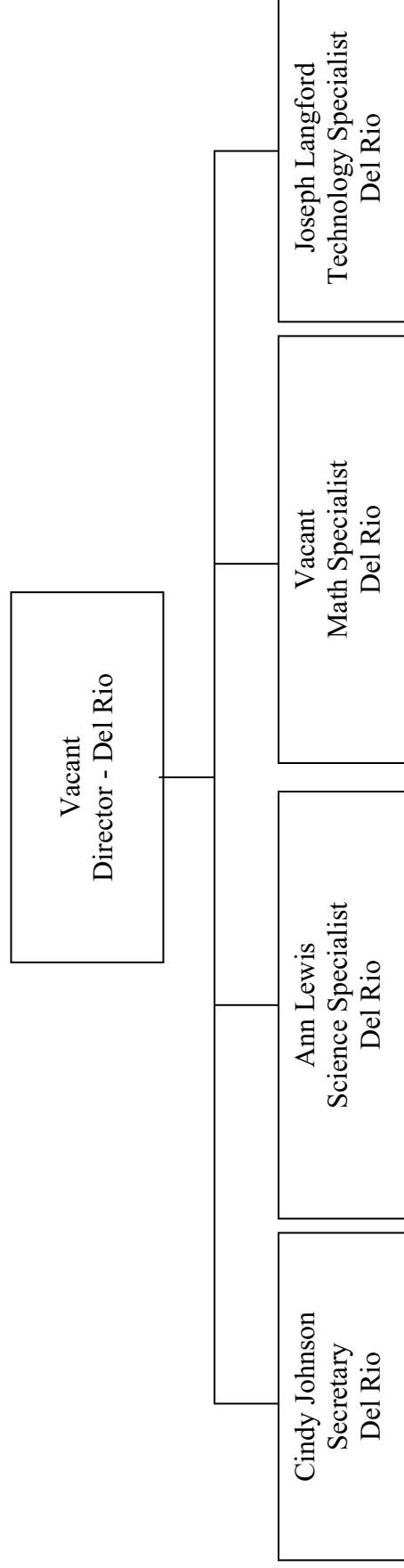
Small Business Development Center



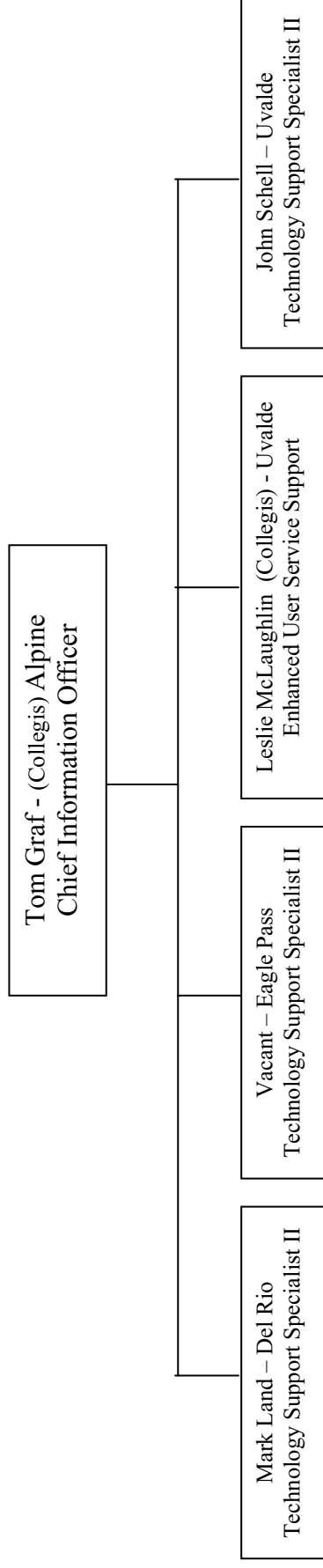
Student Services



Title V Co-op Grant (With SWTJC)



Office of Information Technology



DEPARTMENT OF EDUCATION

Professor and Chair: Barbara Tyler, Ph.D.
Professor Bob Pannell, Ed.D.
Professor William Tindol, Ed.D.
Professor Timothy Wilson, Ed.D.
Professor James Wood, Ed.D.
Associate Professor Todd Russell, Ph.D.
Associate Professor Michael Cass, Ed.D.
Associate Professor Shirley Watts, Ph.D.
Assistant Professor Miriam Muñiz, Ph.D.
Assistant Professor Fernando Quiz, Ph.D.
Assistant Professor Monica Gutierrez, Ph.D.
Assistant Professor Margarito García, Ph.D.

DEPARTMENT OF LIBERAL ARTS

Professor and Chair: Gregory B. Stone, Ph.D.
Professor and Dean: Frank W. Abbott, Ph.D.
Professor Robert C. Overfelt, Jr., Ph.D.
Associate Professor Ferris Byxbe, Ph.D.
Associate Professor Jorge Hernández, Ph.D.
Associate Professor Francine Richter, Ph.D.
Associate Professor Sarah Moreman, Ph.D.
Assistant Professor Donald Walden, Ph.D.
Assistant Professor Wesley Wynne, Ph.D.
Assistant Professor Patricia Nicosia, Ph.D.
Assistant Professor Daniel H. Foley III., Ph.D.

DEPARTMENT OF BUSINESS ADMINISTRATION (Including Economics)

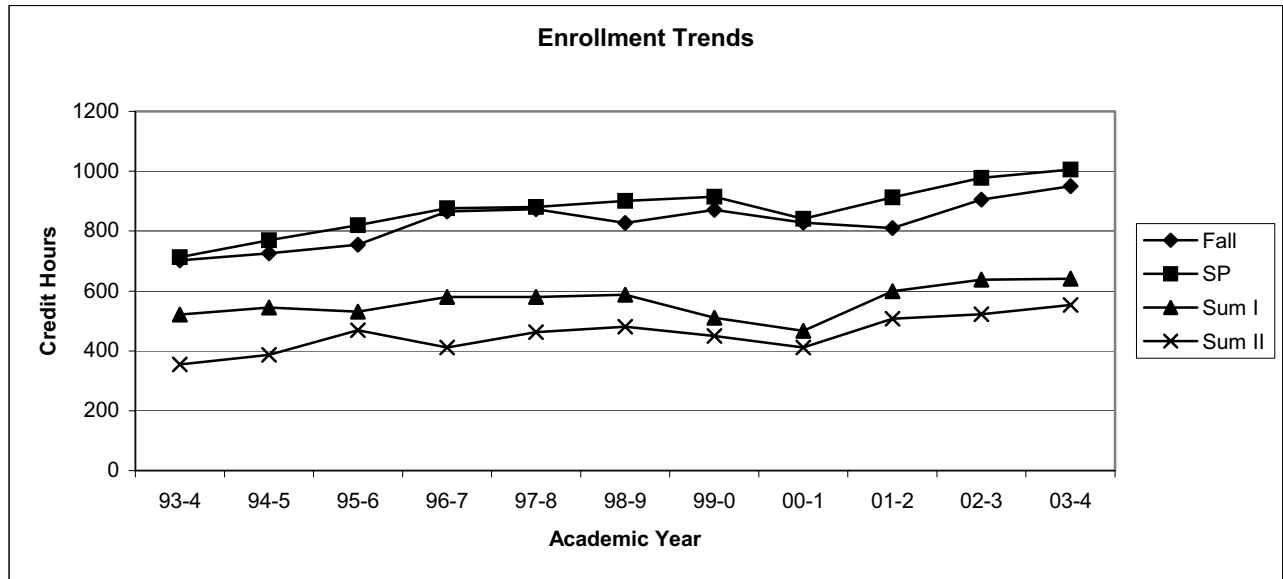
Professor and Chair: Terry Carson, D.B.A.
Professor Roman Sliwa, Ph.D.
Professor Hoi-Tay Wong, Ph.D.
Professor Randal Stitts, Ph.D.
Assistant Professor Efraín Adames, M.P.A.

DEPARTMENT OF NURSING EDUCATION

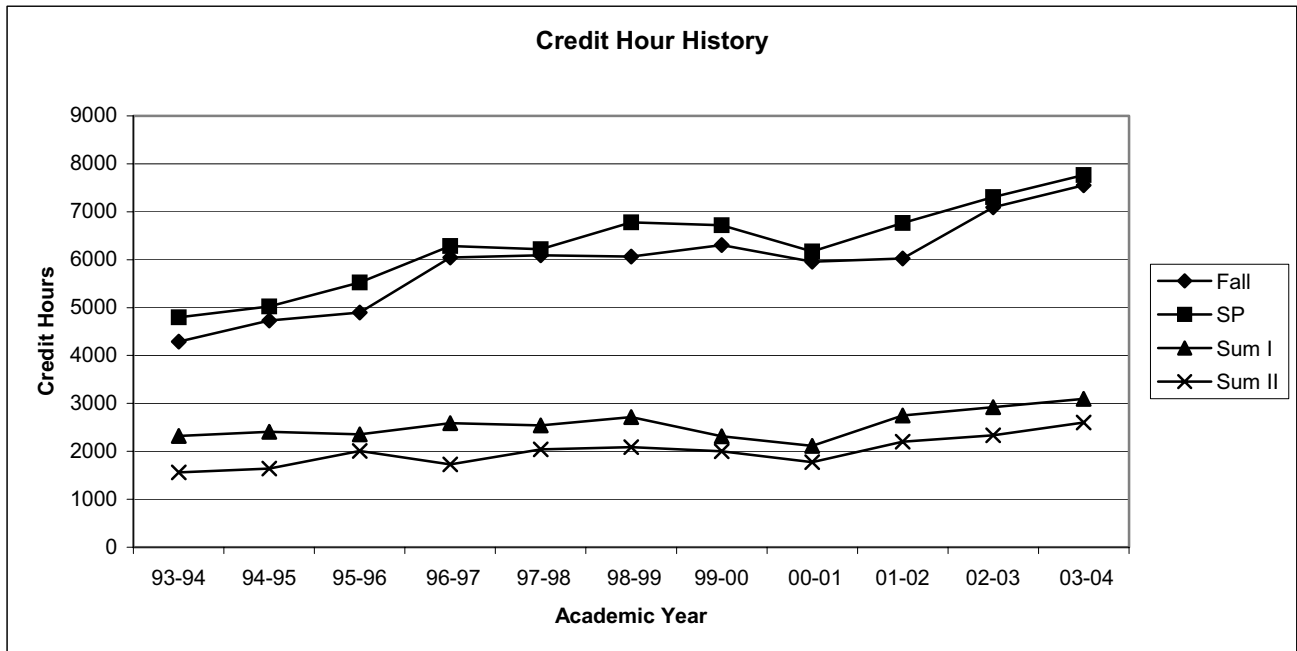
Associate Professor Roxanne Bell, Ph.D., Director

II. HISTORICAL TRENDS

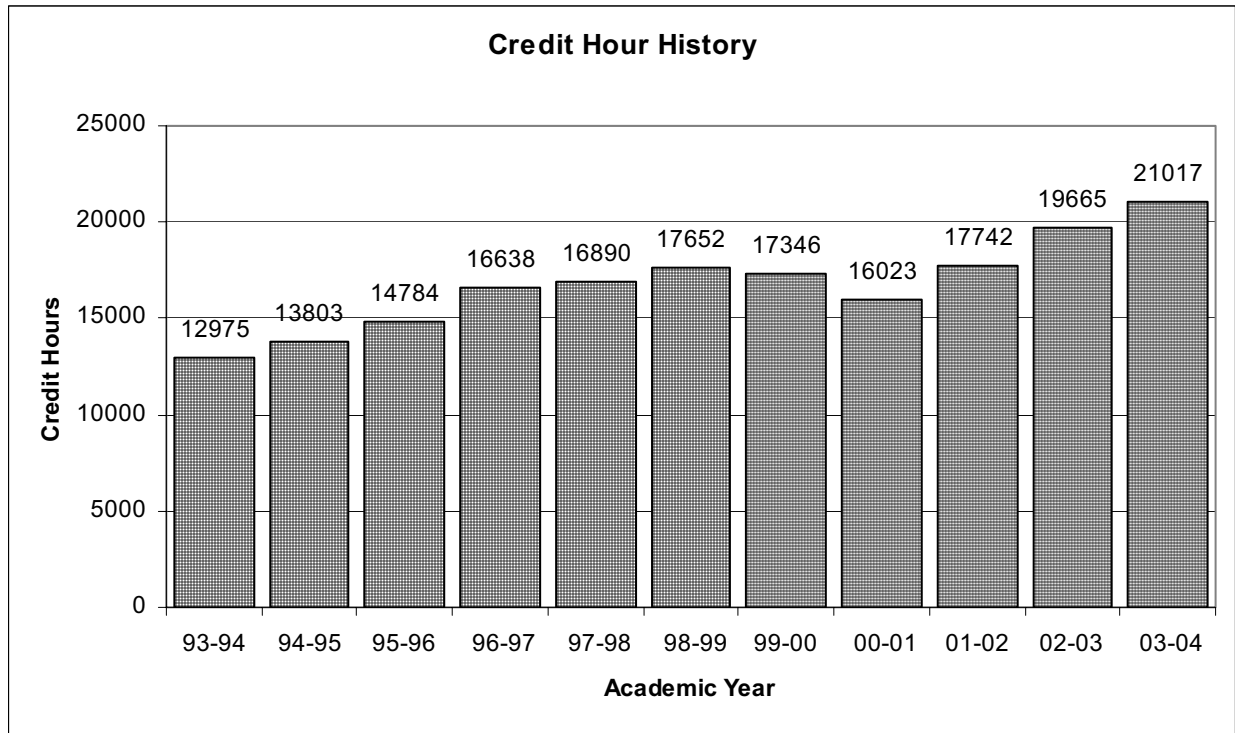
Enrollment by academic year: (93-94 to 03-04).



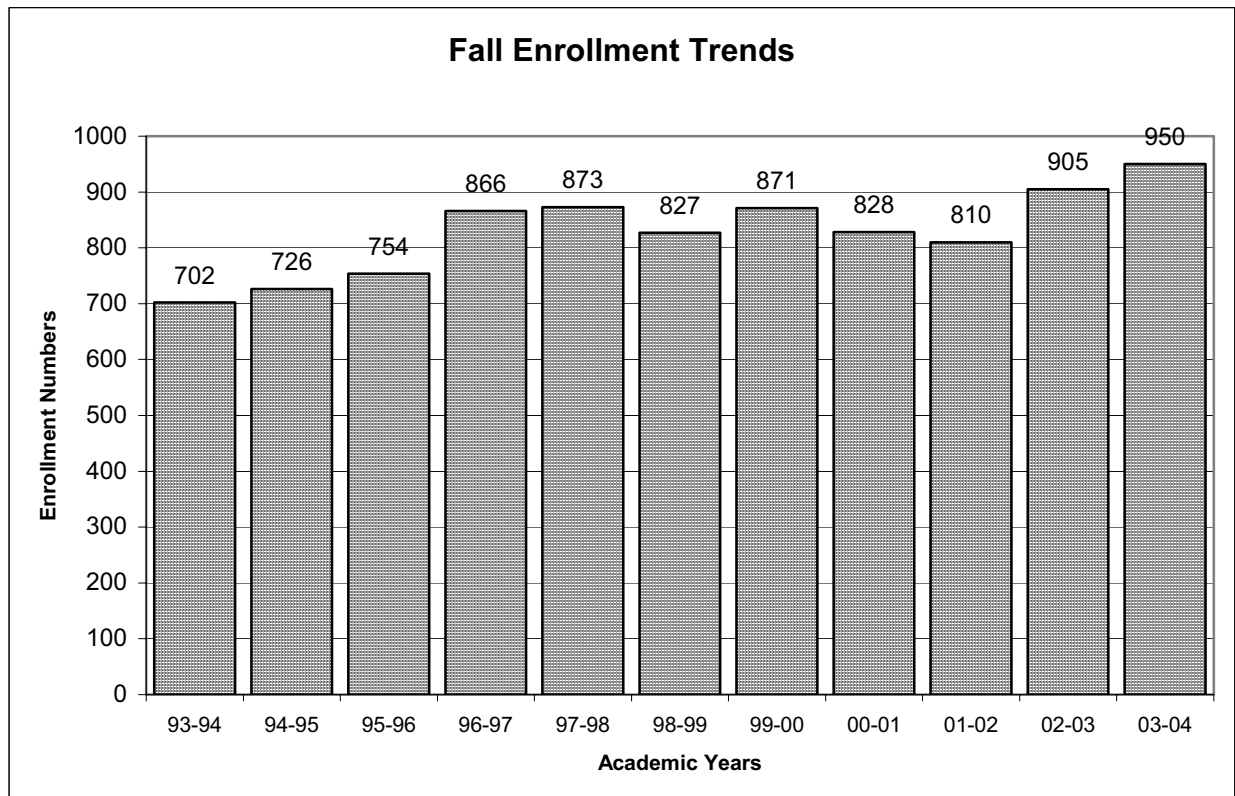
Credit hours by academic year: (93-94 to 03-04).



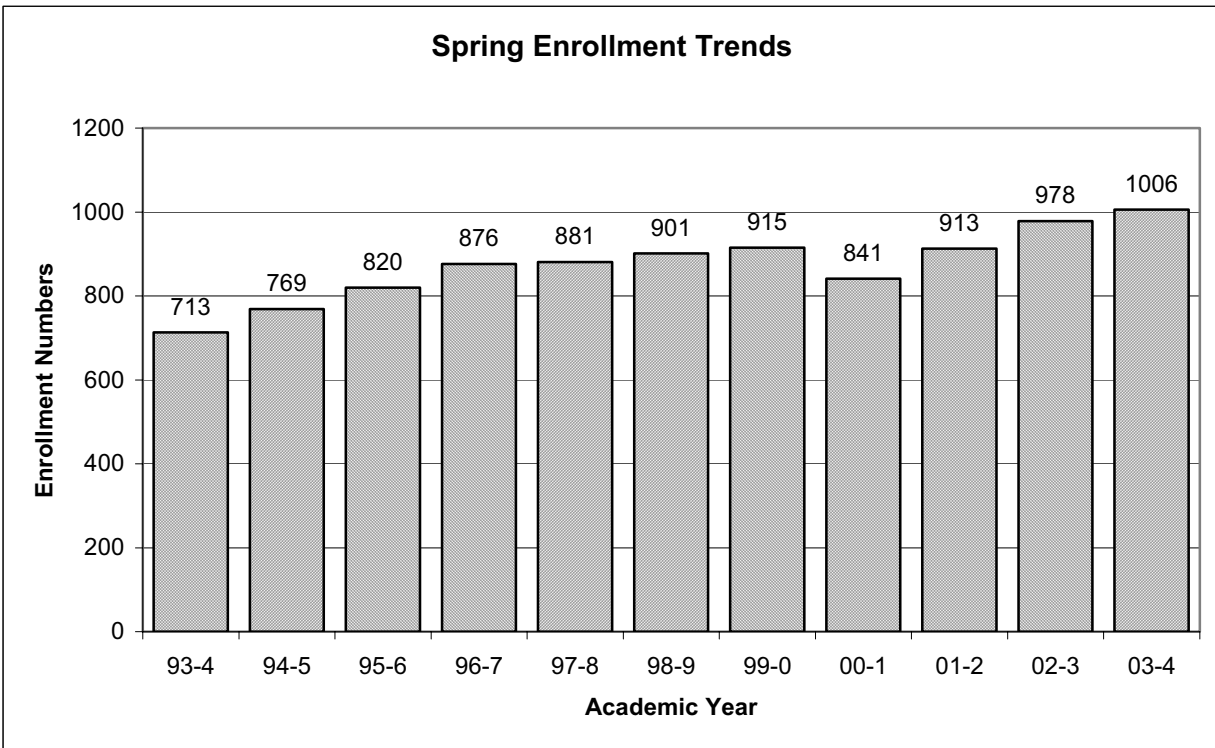
Credit hour history by academic year: (93-94 to 03-04).



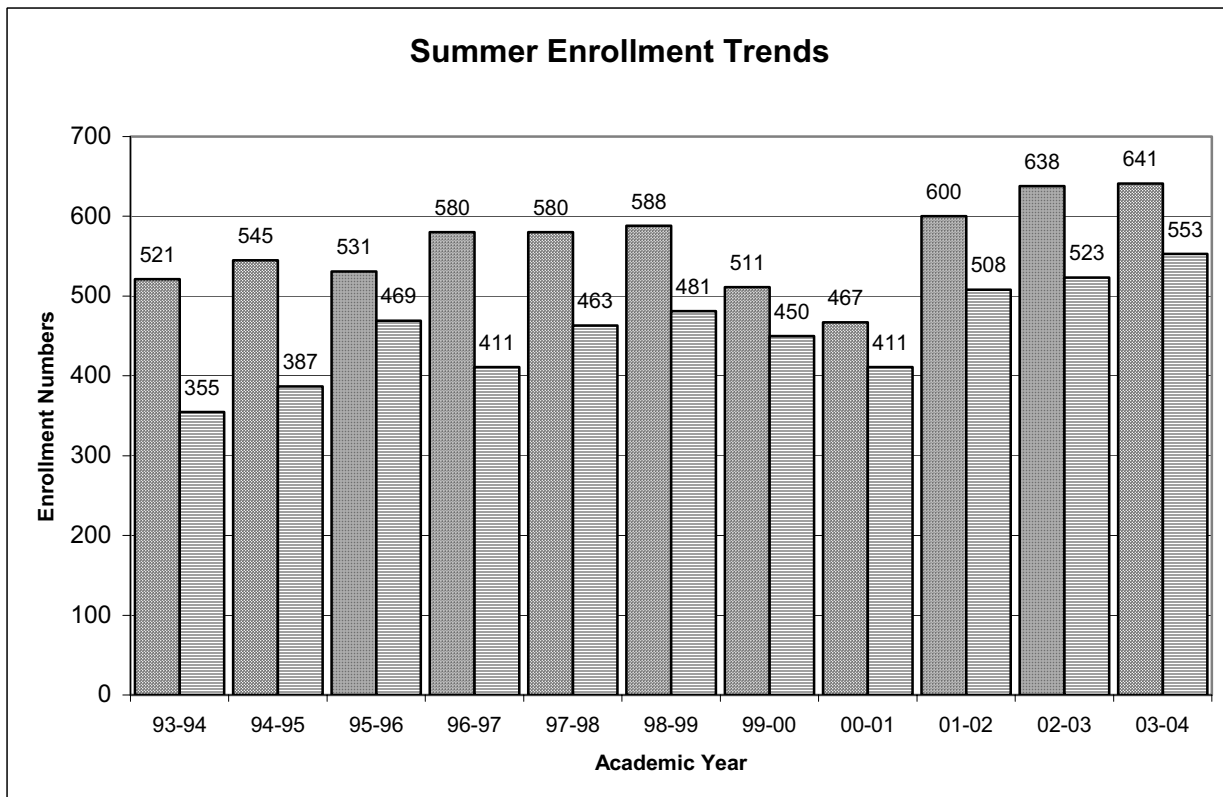
Historical enrollment trends by fall semester (93-94 to 03-04).



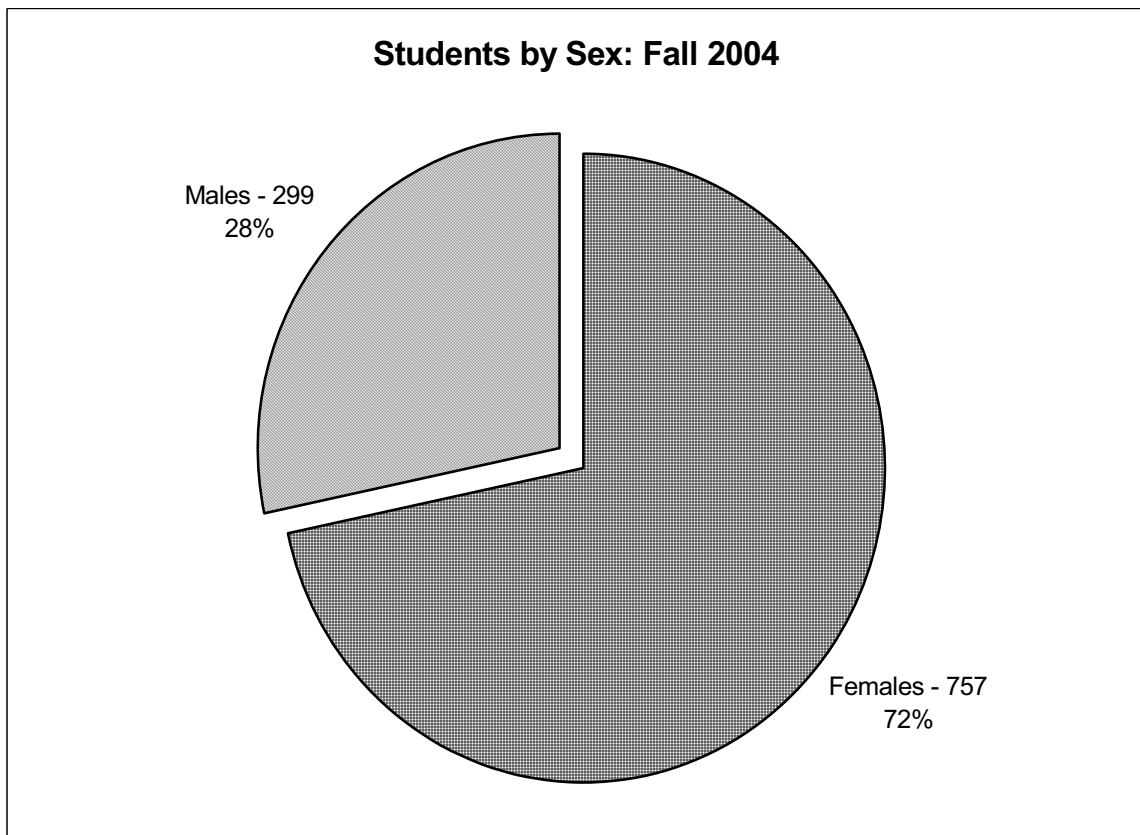
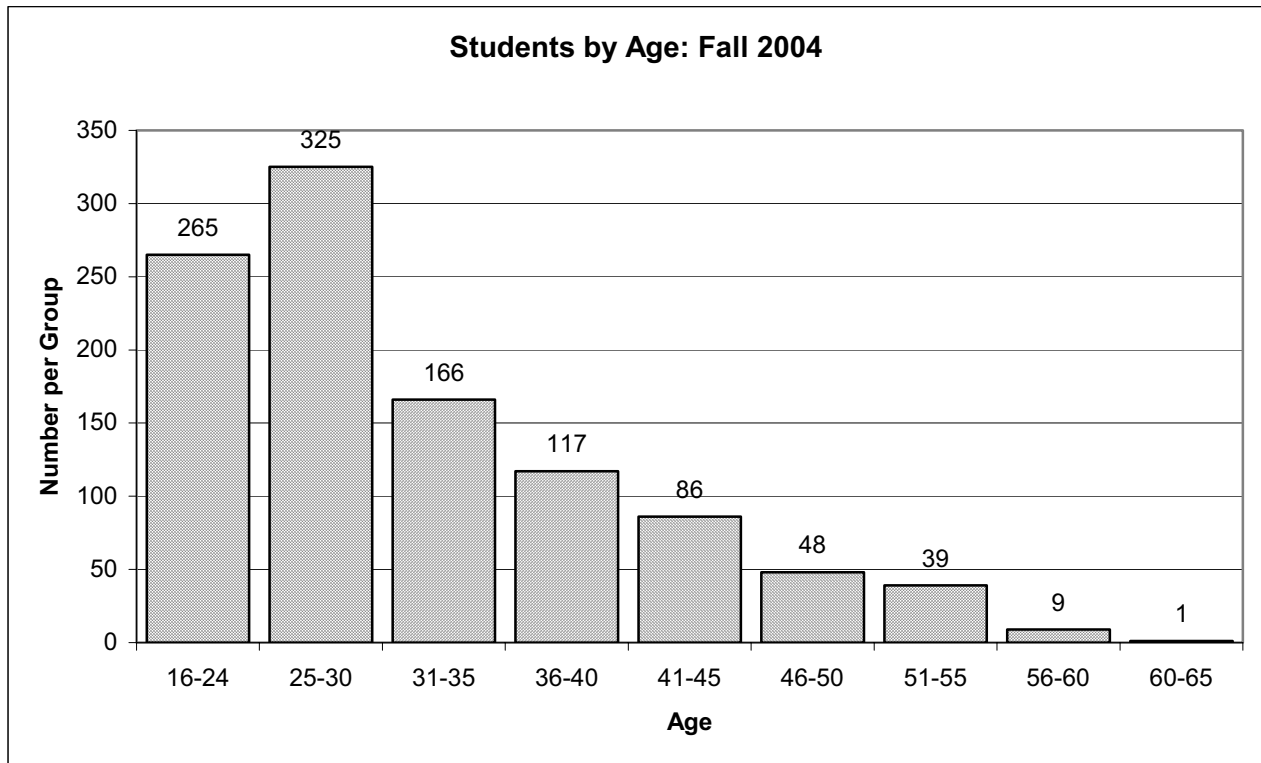
Historical enrollment trends by spring semester: (93-94 to 03-04).

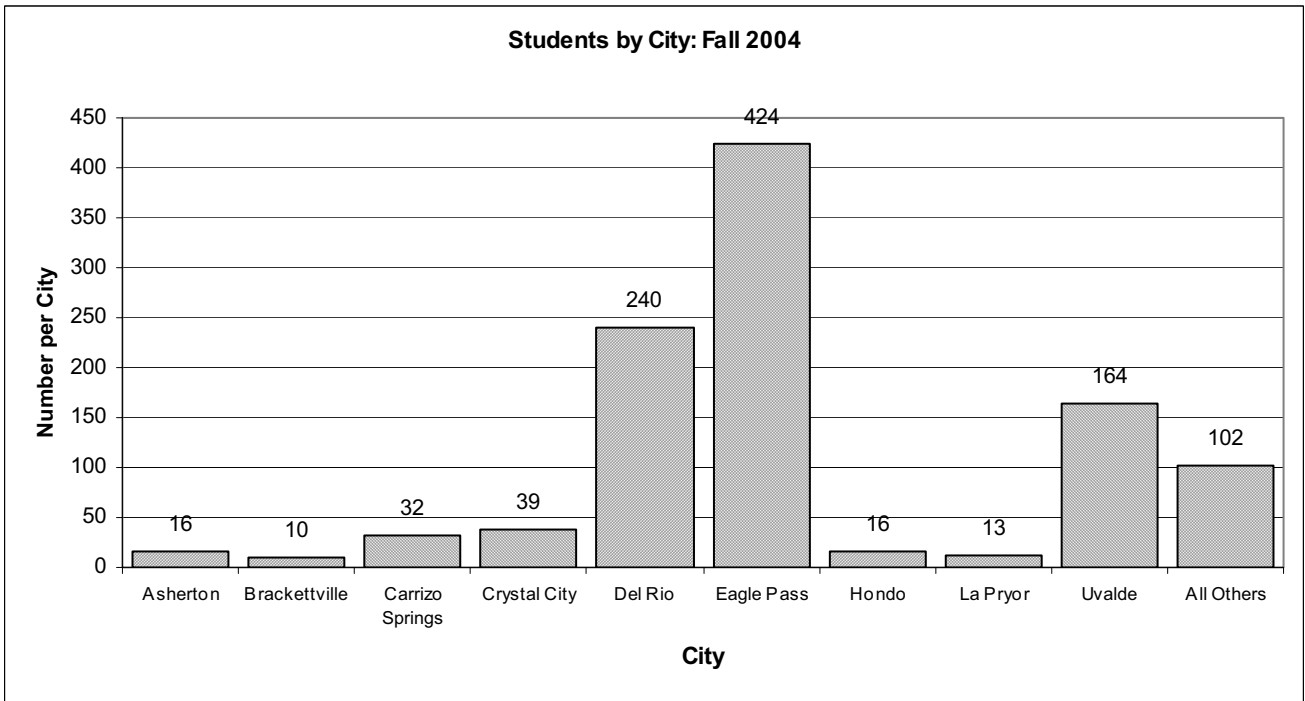
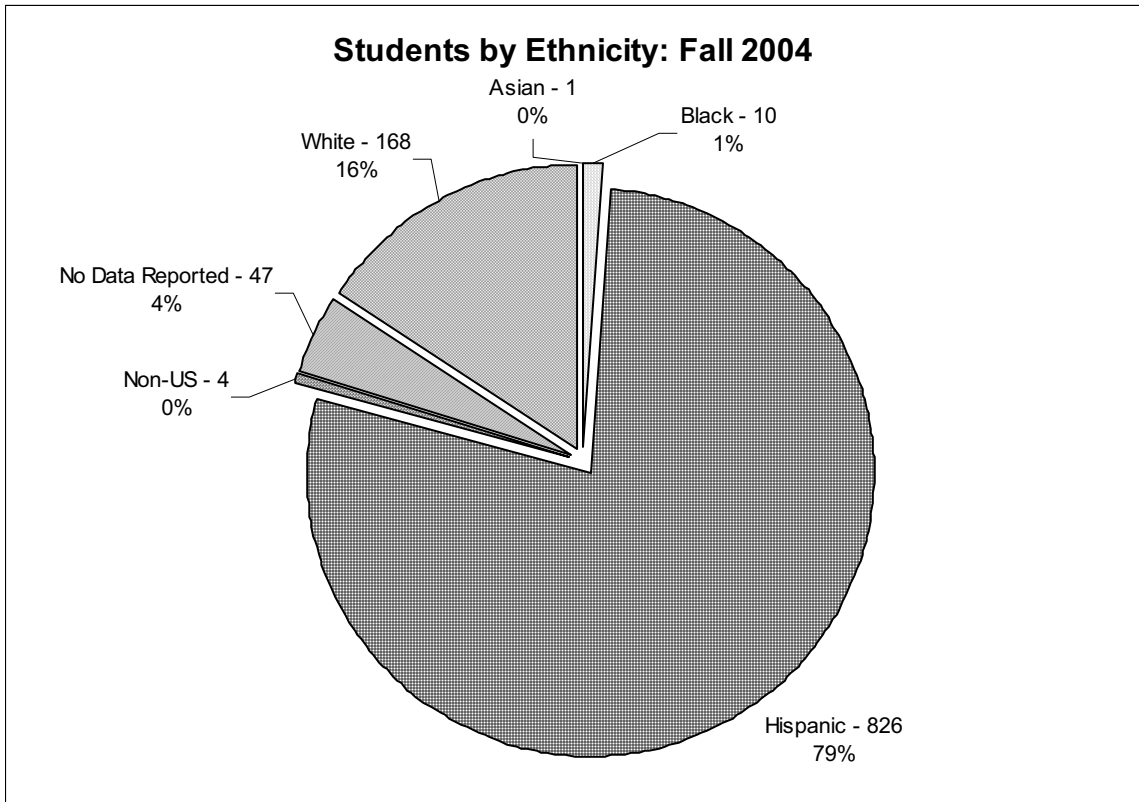


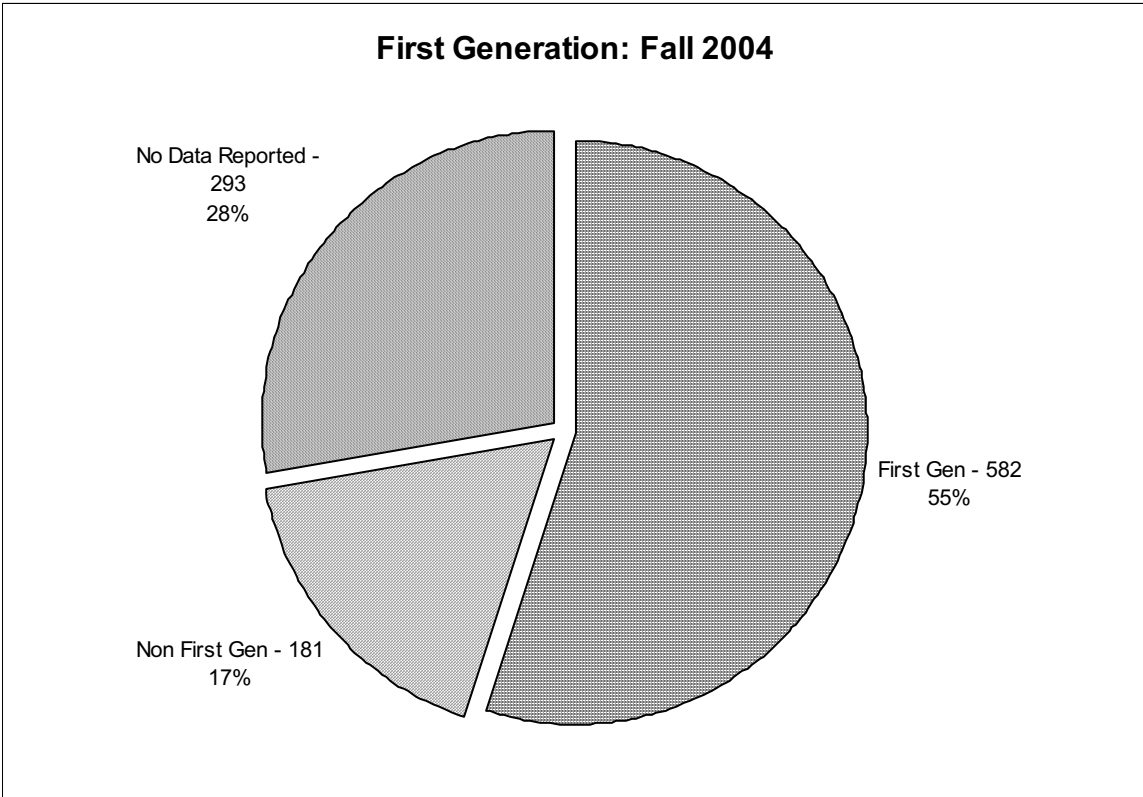
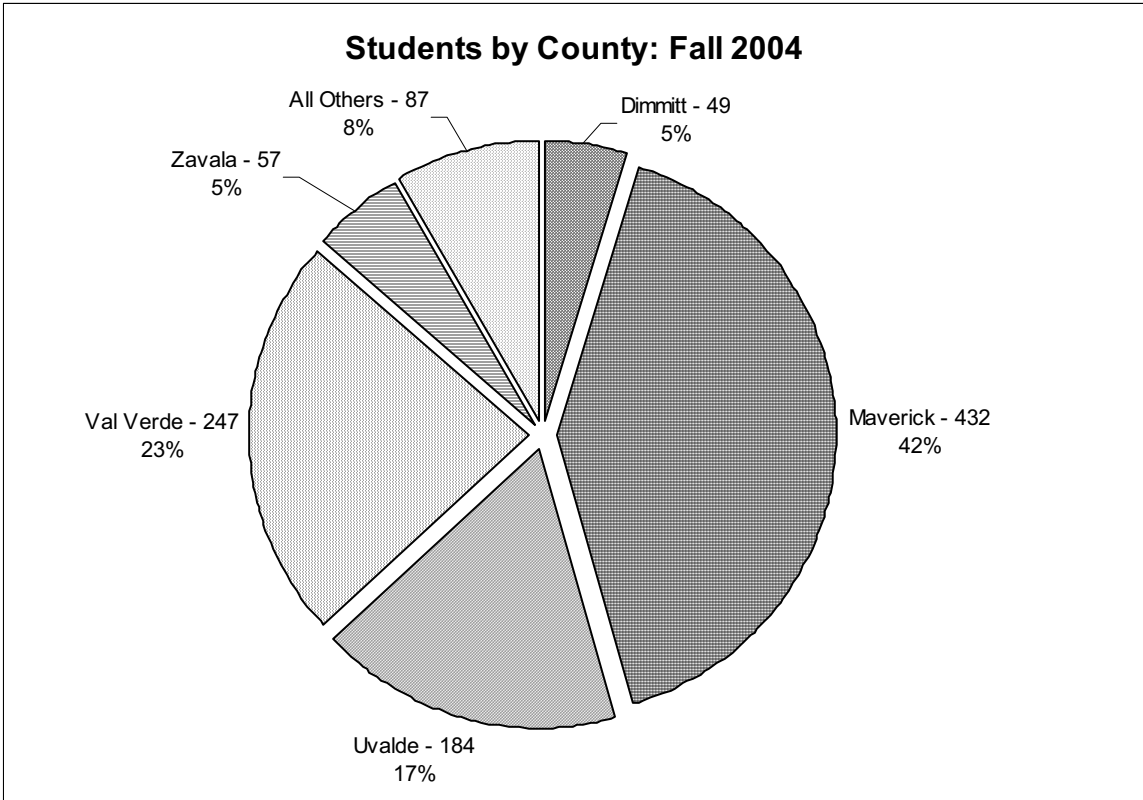
Historical enrollment trends by summer semester: (93-94 to 03-04).



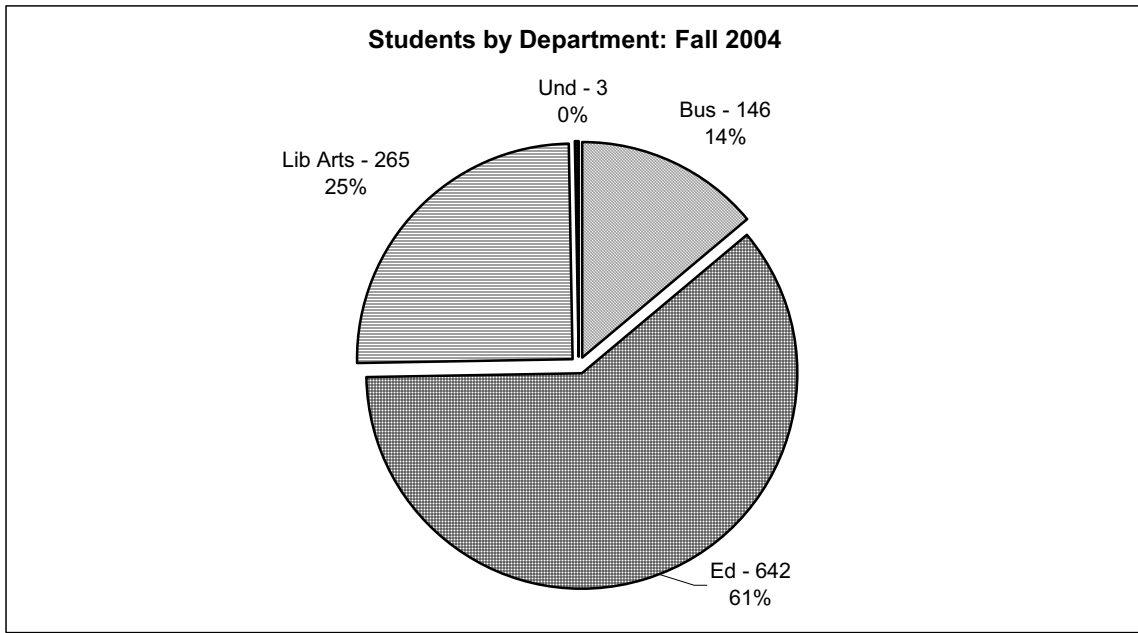
III. STUDENT PROFILE, FALL 2004







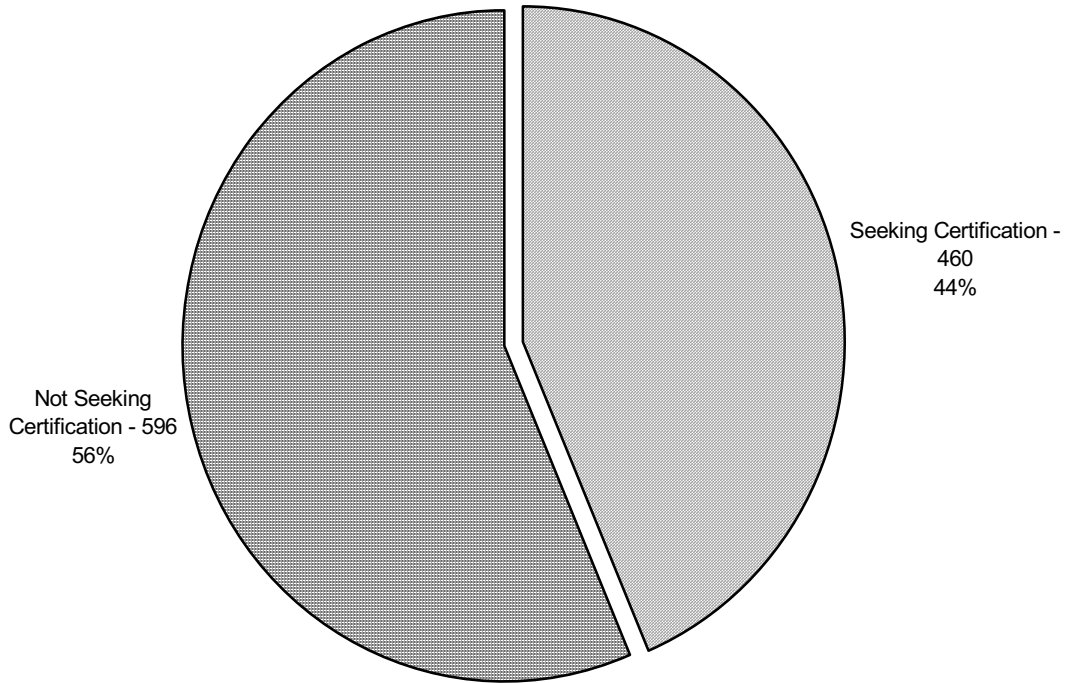
Extrapolation of the data brings the total for first generation to 76%.



** Enrollment in the education department is inclusive of all students whether seeking initial teacher certification, or additional certification.

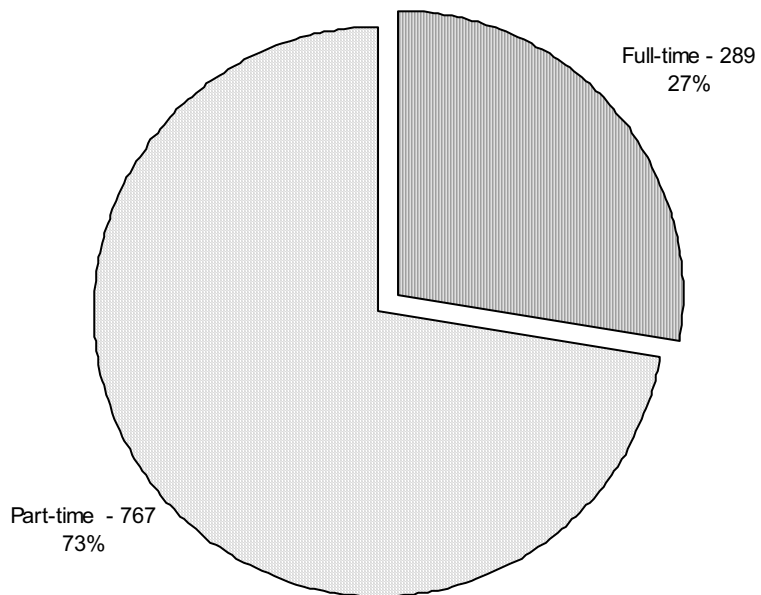
Students by Program: Fall 2004	
Masters of Business Administration (General)	30
Masters of Education	22
Masters of Education, Counseling	83
Masters of Education, Diagnostician	10
Masters of Education, Reading Specialist	10
Masters of Education, School Administration	51
Masters of Education, School Supervision	6
Bachelor of Arts, English	31
Bachelor of Arts, History	30
Bachelor of Arts, Interdisciplinary Studies	305
Bachelor of Arts, Psychology	35
Bachelor of Arts, Social Science	22
Bachelor of Arts, Spanish	20
Bachelor of Business Administration, General	99
Bachelor of Business Administration, International Trade With Mexico	8
Bachelor of Business Administration, Management Information Systems	9
Bachelor of Science, Biology	7
Bachelor of Science, Criminal Justice	51
Bachelor of Science, Interdisciplinary Studies	22
Bachelor of Science Mathematics	29
Graduate, Not Seeking degree	73
Post Bach , Seeking Certification	67
Professional, Not Seeking Degree	31
Undergraduate, Not seeking Degree	2
Undecided	3
Total	1056

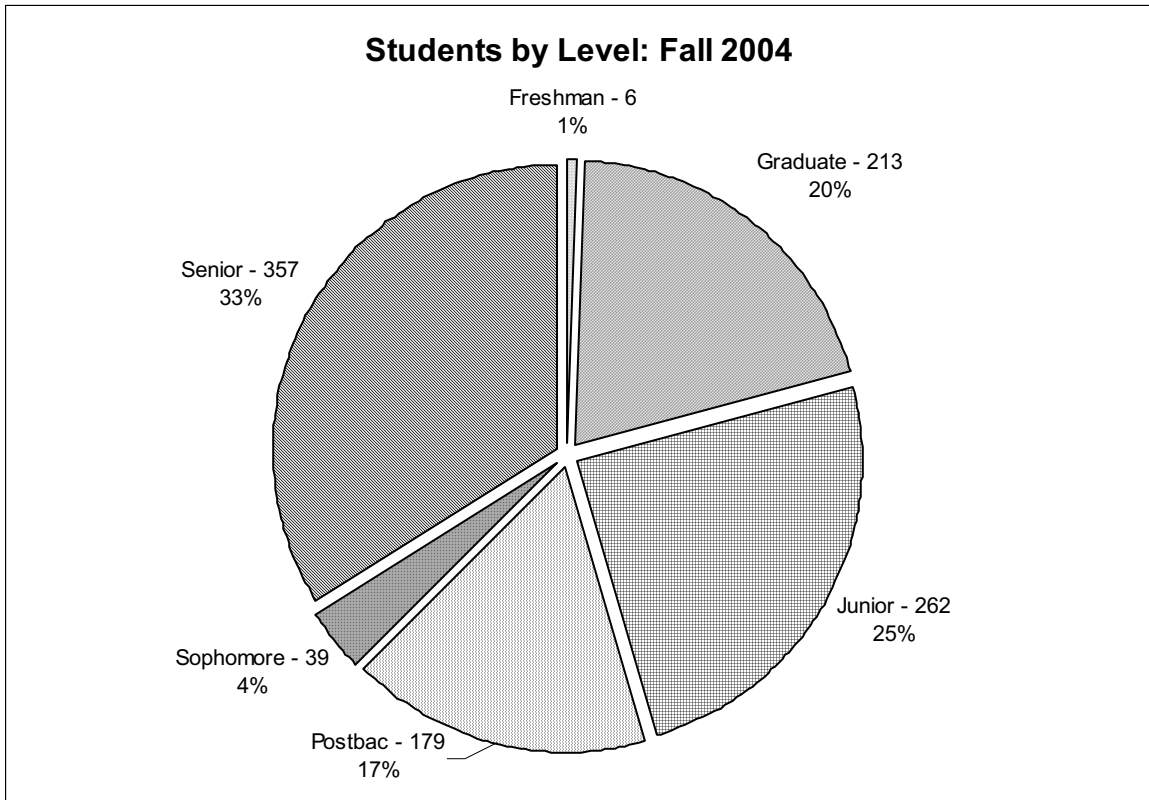
Seeking Teacher Certification: Fall 2004



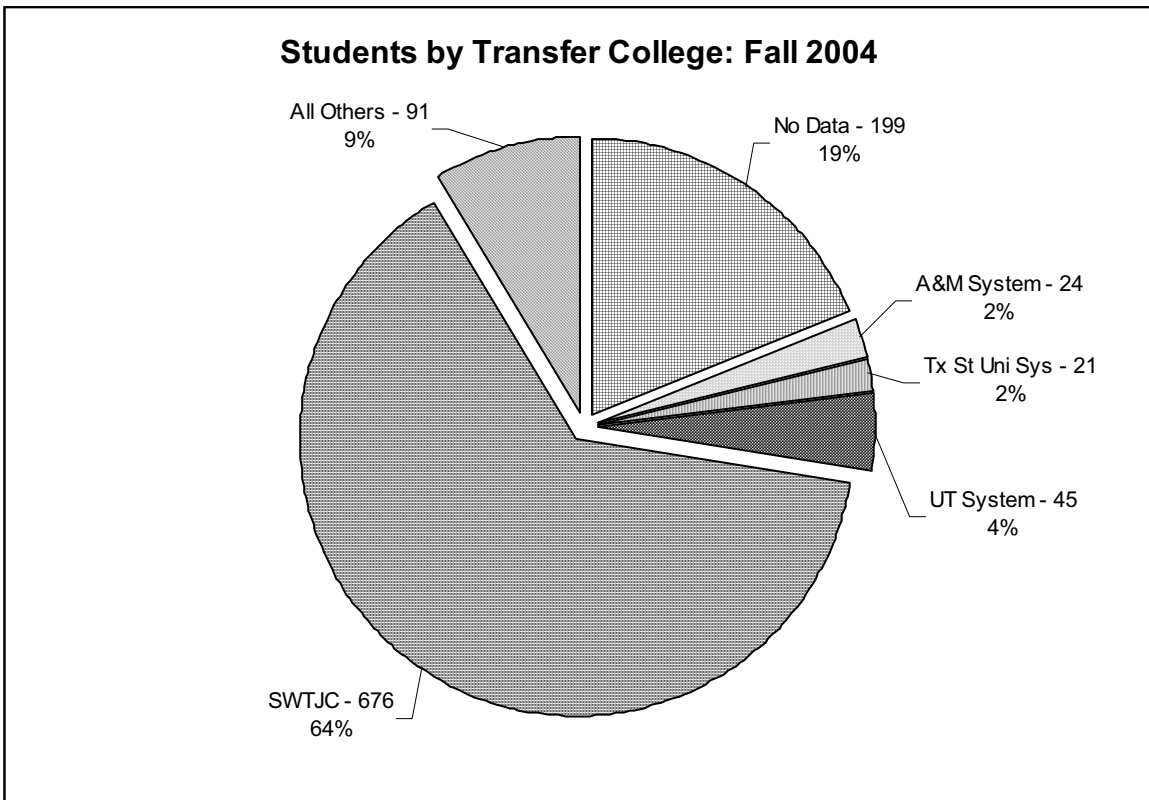
** Seeking certification refers to initial teacher certification only.

Full-time & Part-time Enrollment: Fall 2004

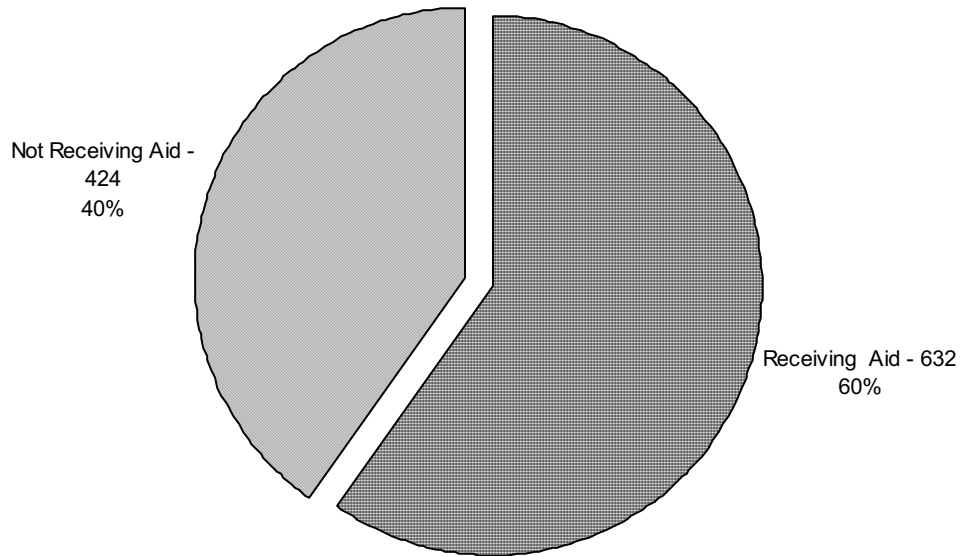




** Students identified as freshmen are noted as such in the CB report.

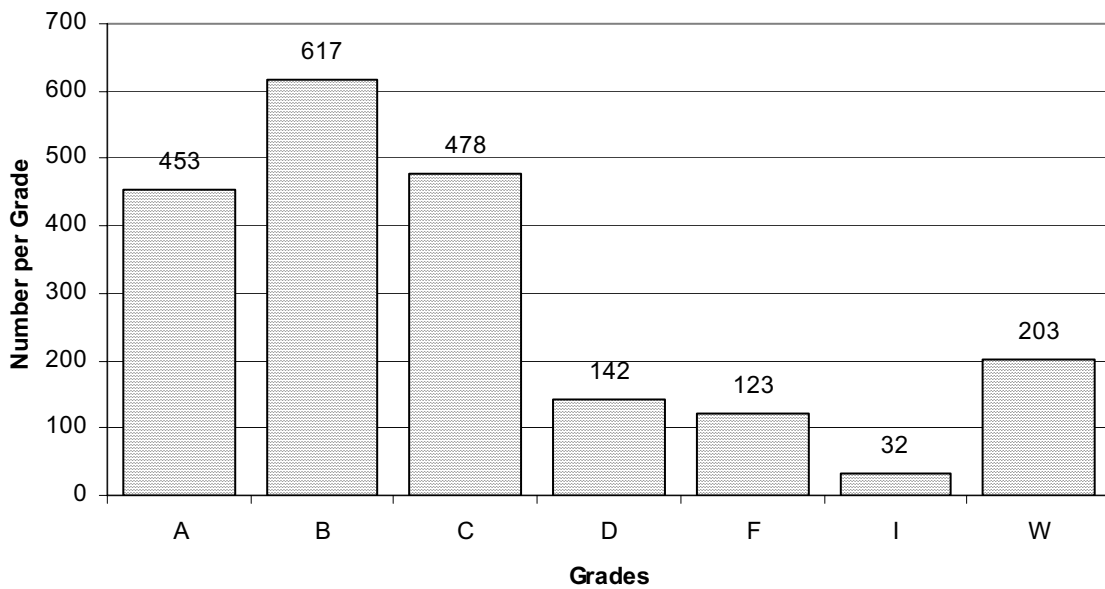


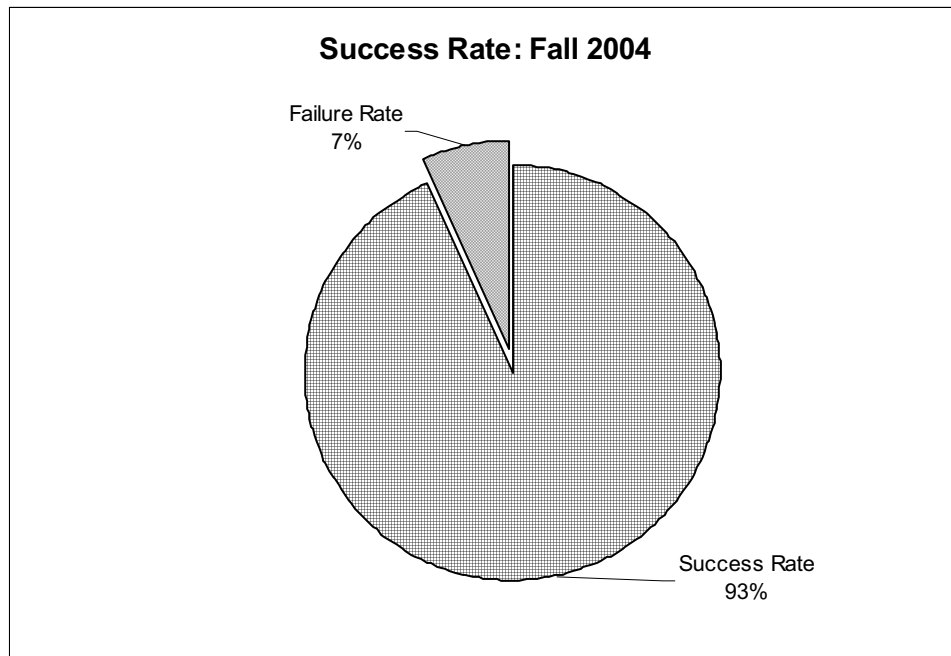
Students Receiving Financial Aid: Fall 2004



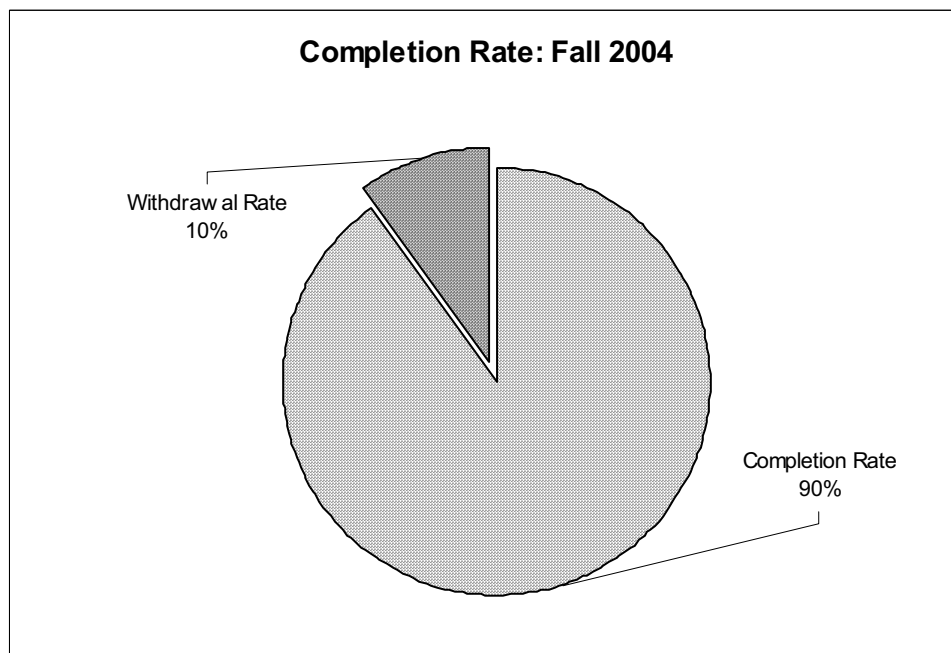
Aggregate grade distribution includes only undergraduate students.

Aggregate Grade Distribution: Fall 2004



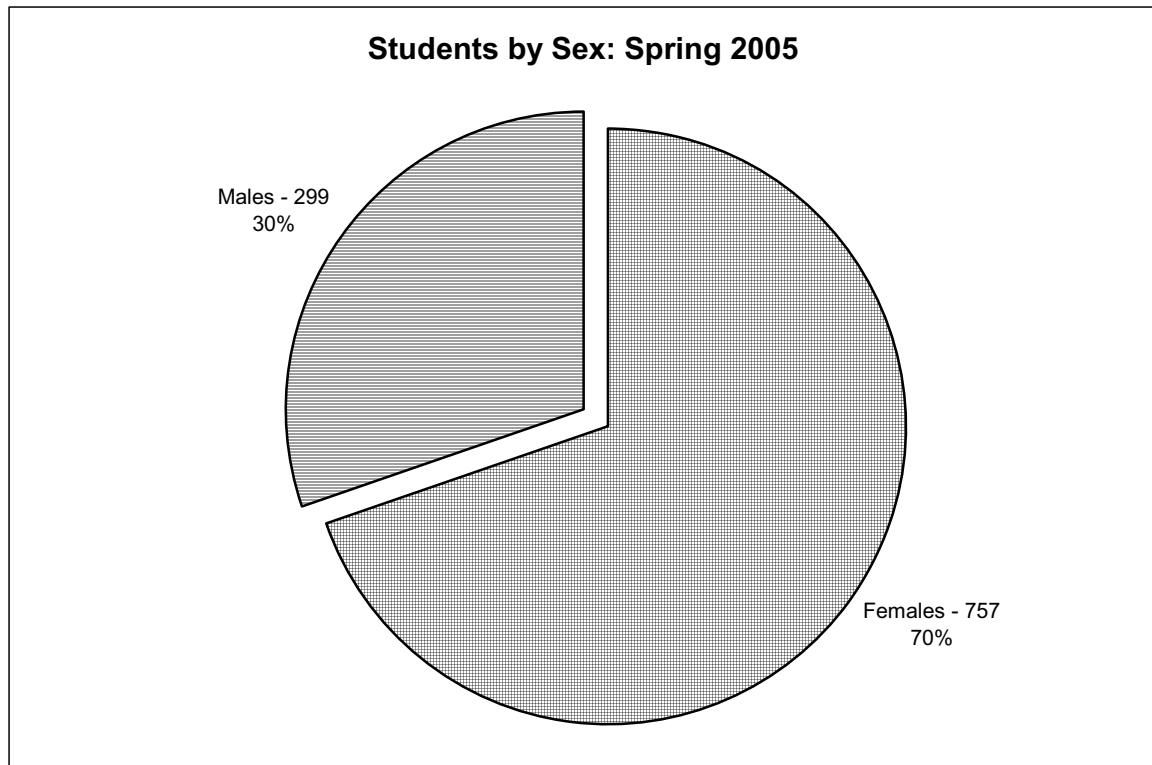
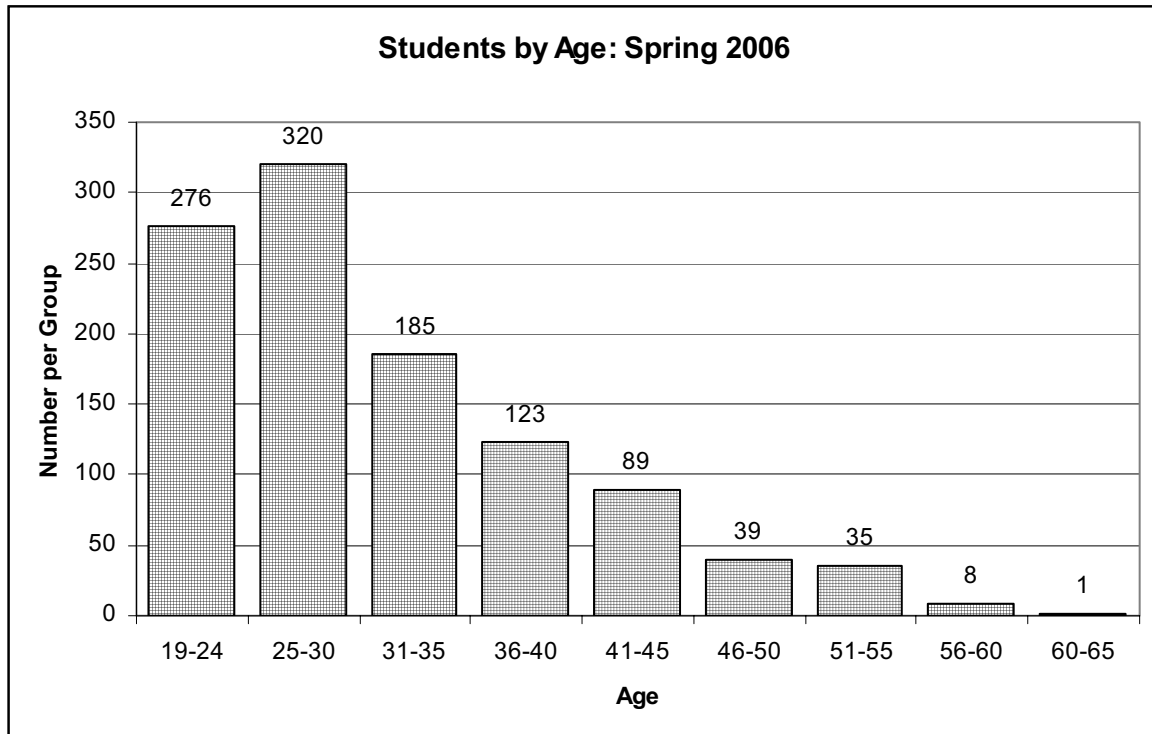


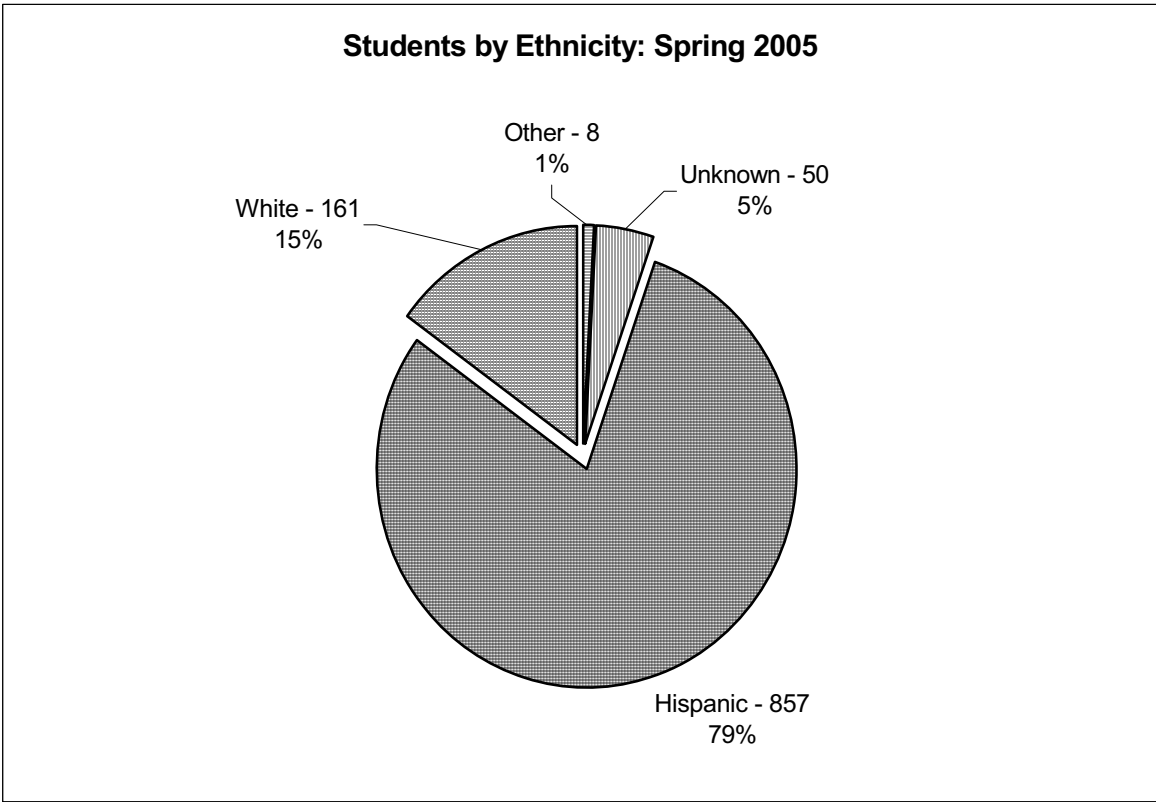
- > Success Rate = total of grades A, B, C, & D. (Undergraduates only)
- > Failure Rate = total of grades F.
- > Grades of I and PR are not included in the calculation as these do not reflect either a completion or failure, rather work that may, or may not, be completed.
- > Grades of W are not included as it is not known what the ultimate grade would have been.



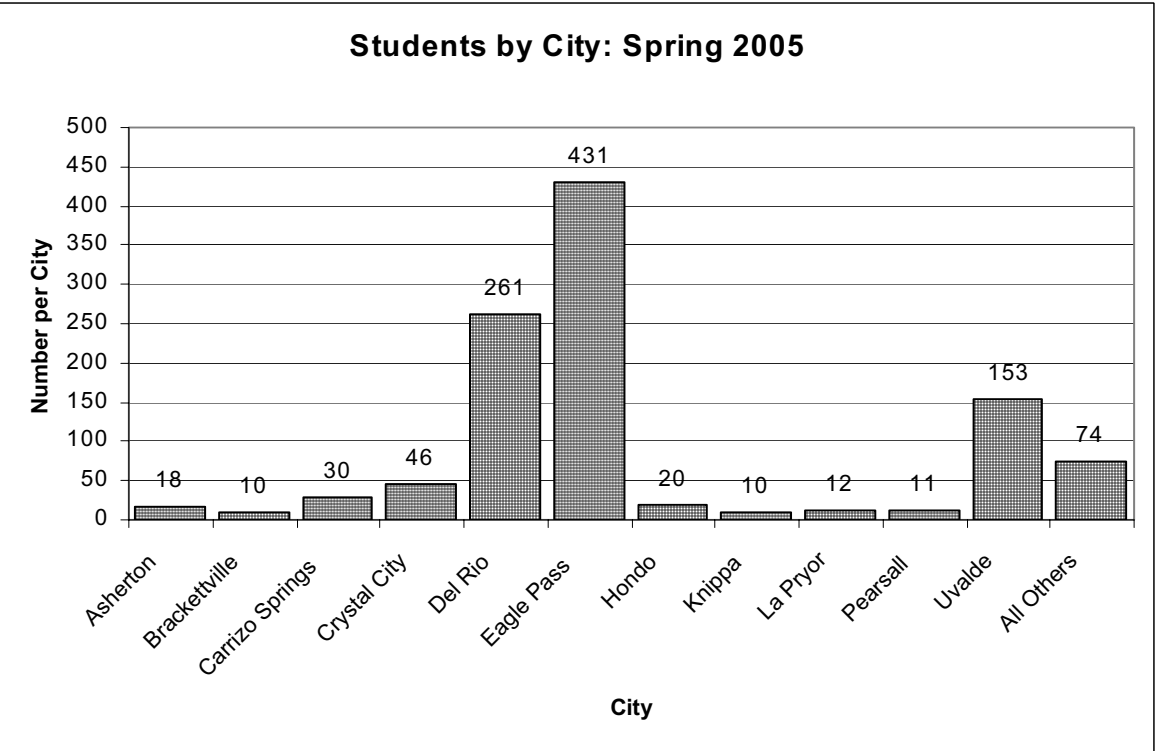
Completion Rate = total of grades A, B, C, D, F & I (Undergraduates only)
 Completion Rate is defined here as conclusion of a class based on assignment of a grade.

IV. STUDENT PROFILE, SPRING 2005

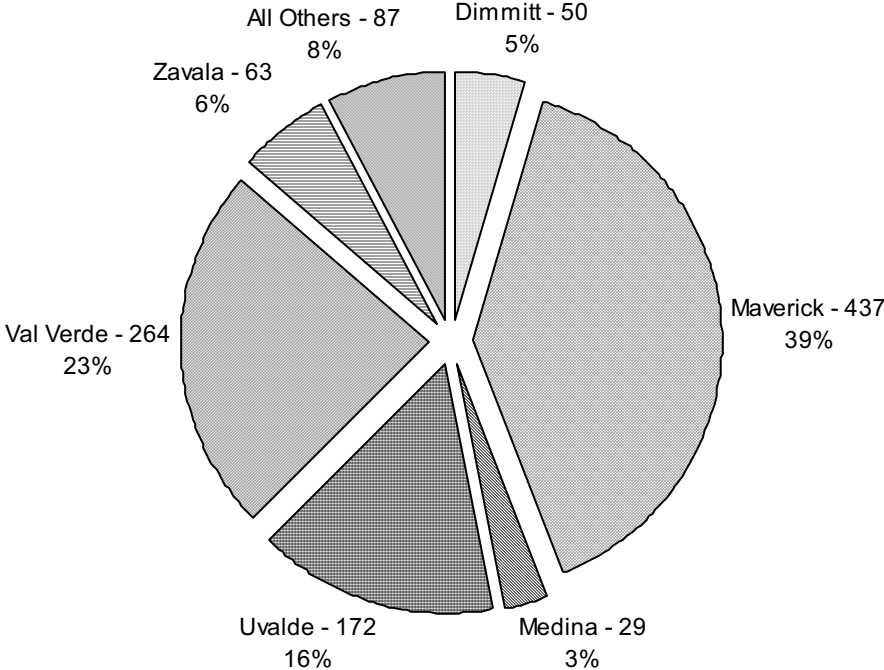




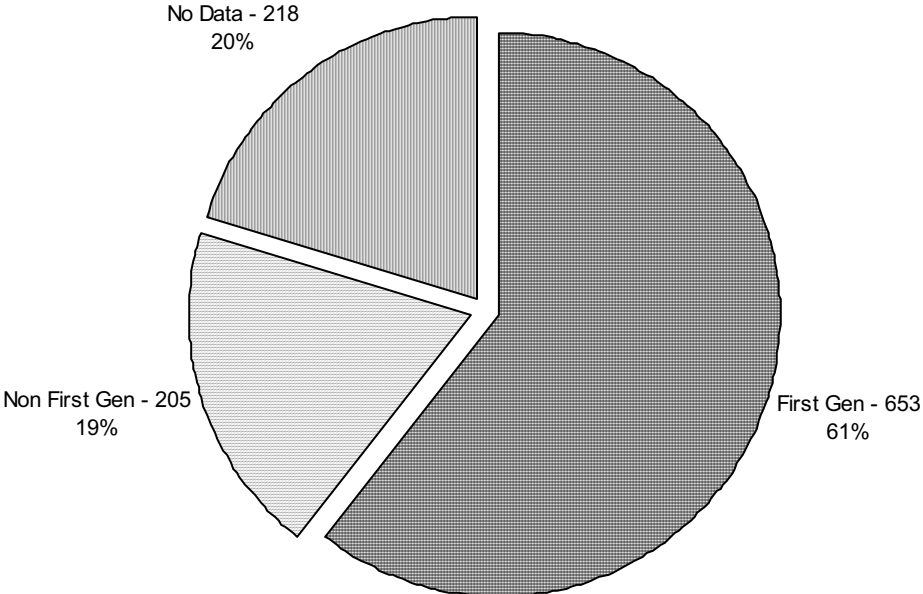
Other includes Asian, Pacific Islander, Native American, Black & Non-Resident Alien.



Students by County: Spring 2005

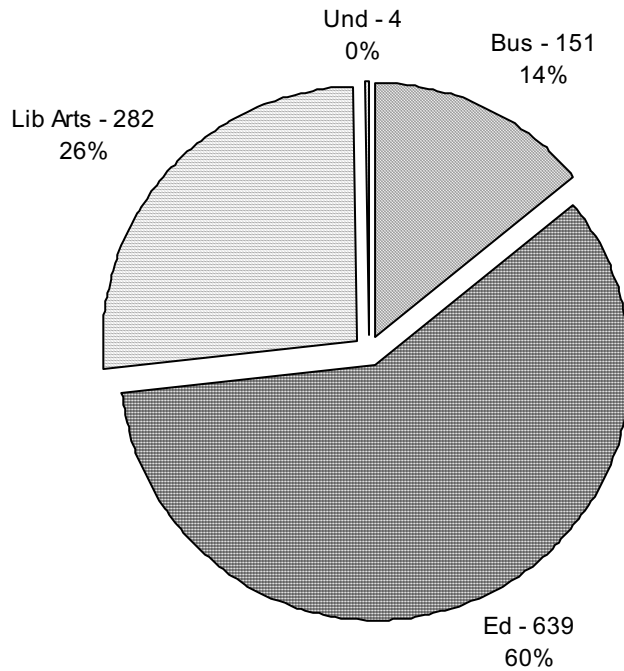


First Generation: Spring 2005



Extrapolation of the data brings the total for first generation to 72%.

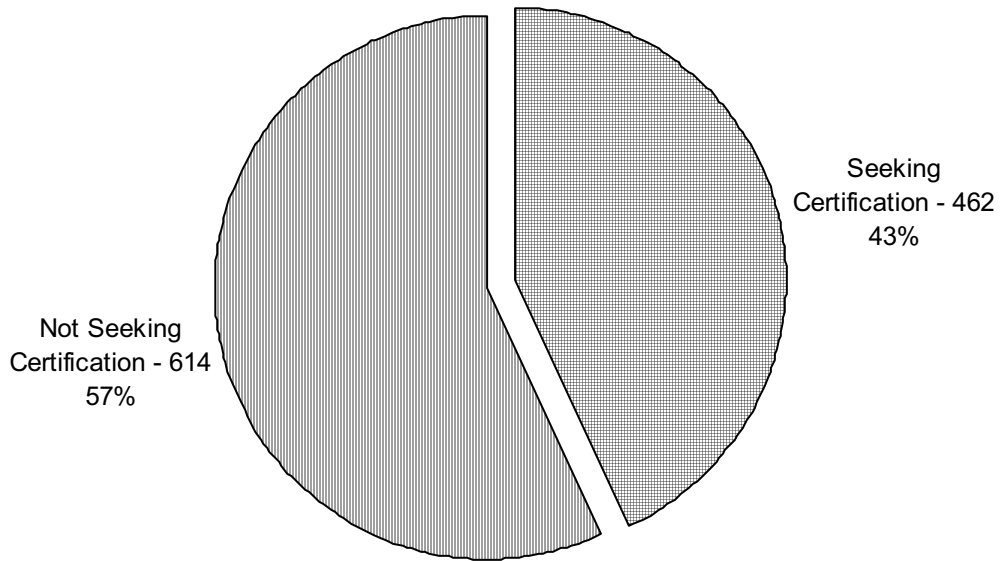
Enrollment by Department: Spring 2005



** Enrollment in the education department is inclusive of all students whether seeking initial teacher certification, or additional certification.

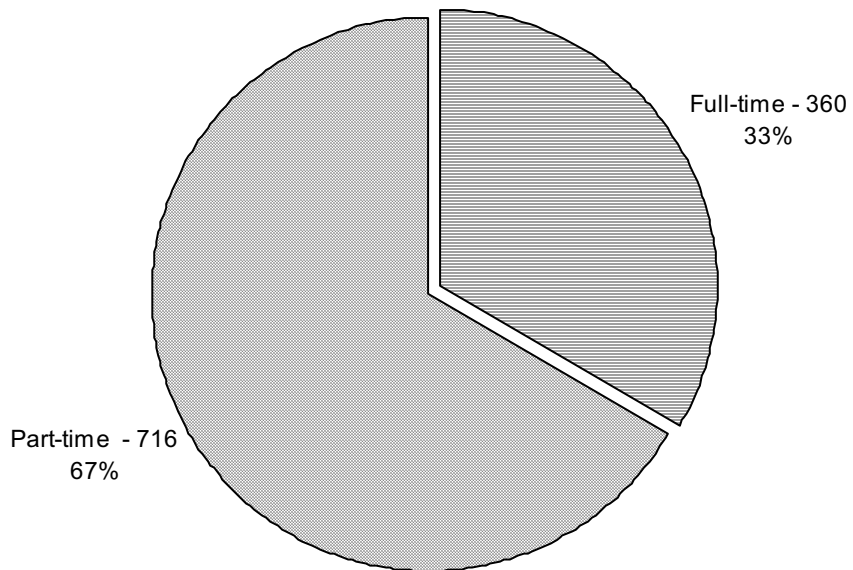
Students by Program: Spring 2005	
Master of Business Administration	28
Master of Education, Counseling	79
Master of Education, Diagnostician	11
Master of Education, General Education	1
Master of Education, Elementary Education	11
Master of Education, Reading Specialist	13
Master of Education, School Administration	49
Master of Education, School Supervision	7
Master of Education, Secondary Education	6
Bachelor of Arts, English	25
Bachelor of Arts, History	36
Bachelor of Arts, Interdisciplinary Studies	327
Bachelor of Science, Interdisciplinary Studies	13
Bachelor of Science, Mathematics	32
Bachelor of Arts, Psychology	25
Bachelor of Arts, Social Science	17
Bachelor of Arts, Spanish	18
Bachelor of Business Administration	110
Bachelor of Science, Biology	6
Bachelor of Science, Criminal Justice	67
Bachelor of Science, Management Information Systems	13
Post-baccalaureate	178
Undeclared	4
Total	1076

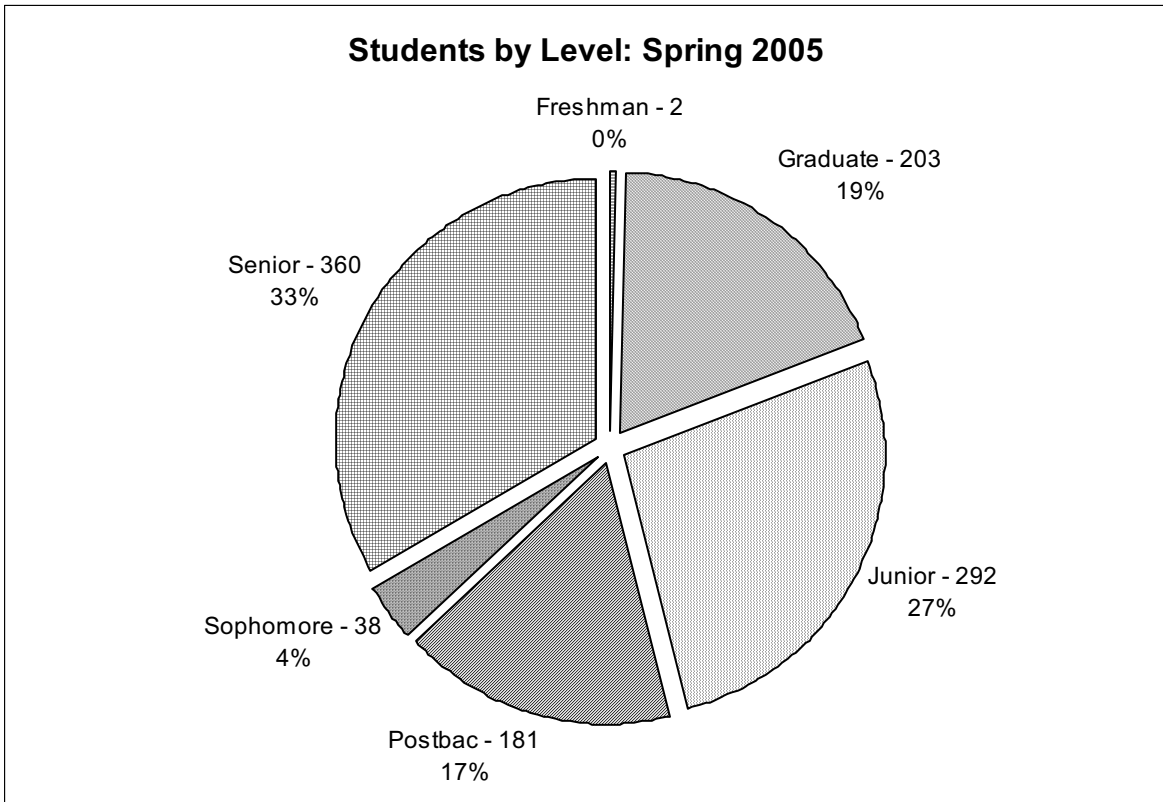
Seeking Teacher Certification: Spring 2005



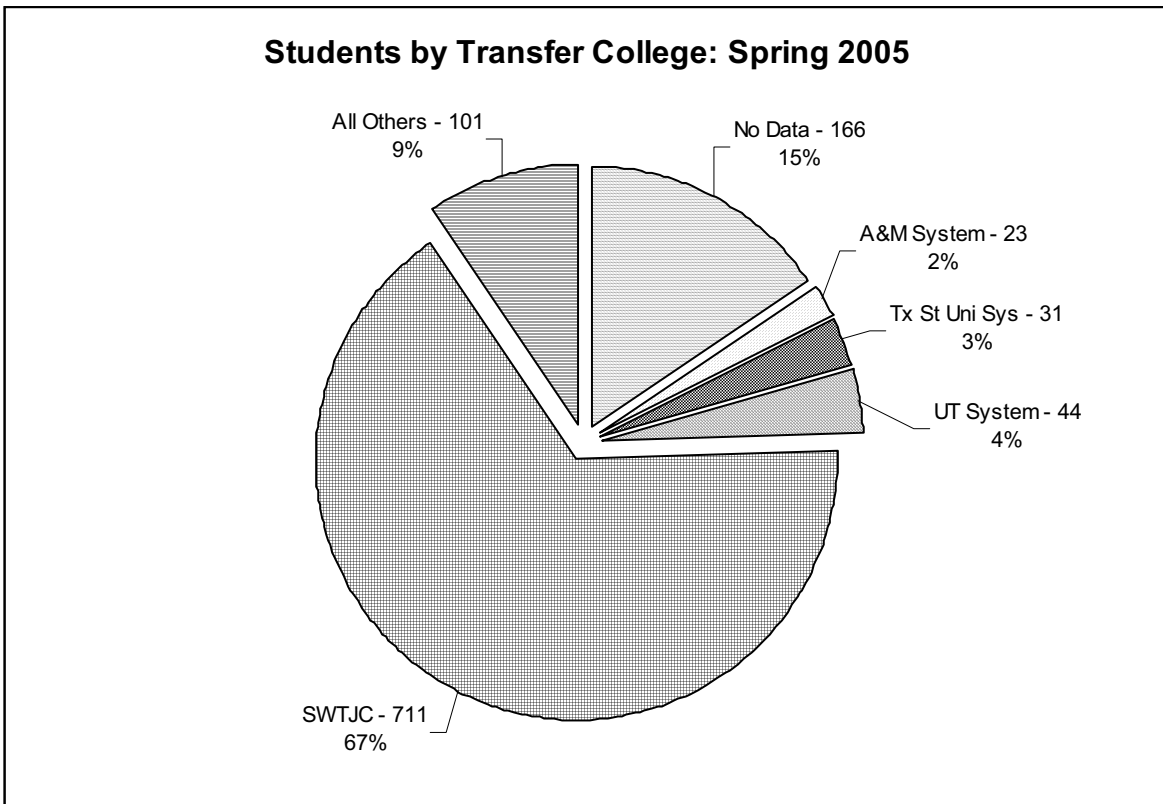
** Seeking certification refers to initial teacher certification only.

Full-time & Part-time Enrollment: Spring 2005

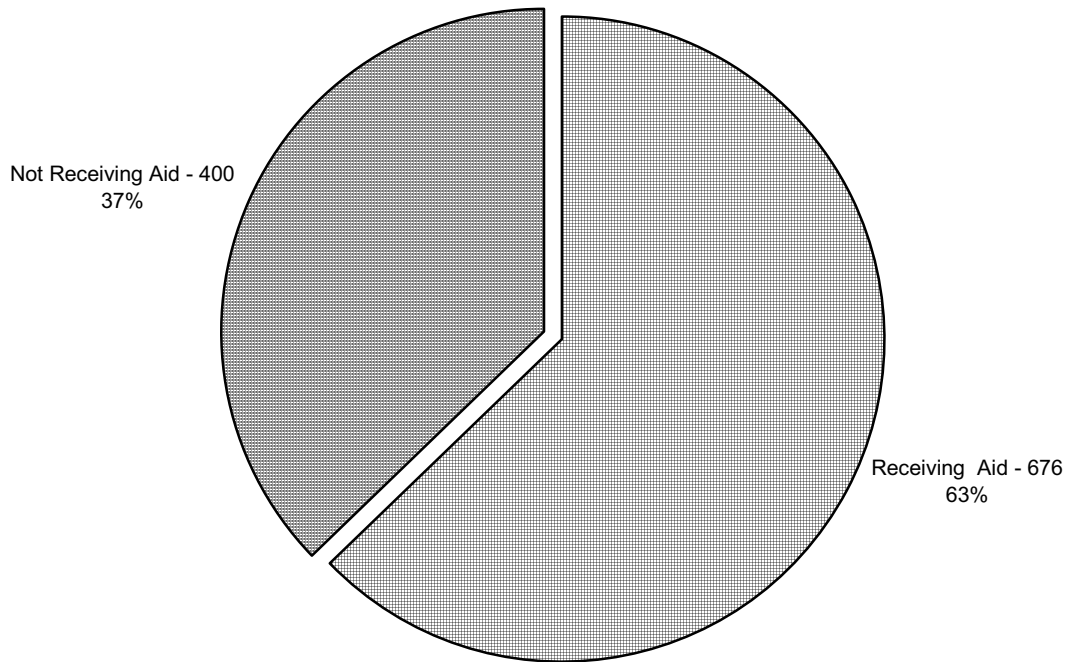




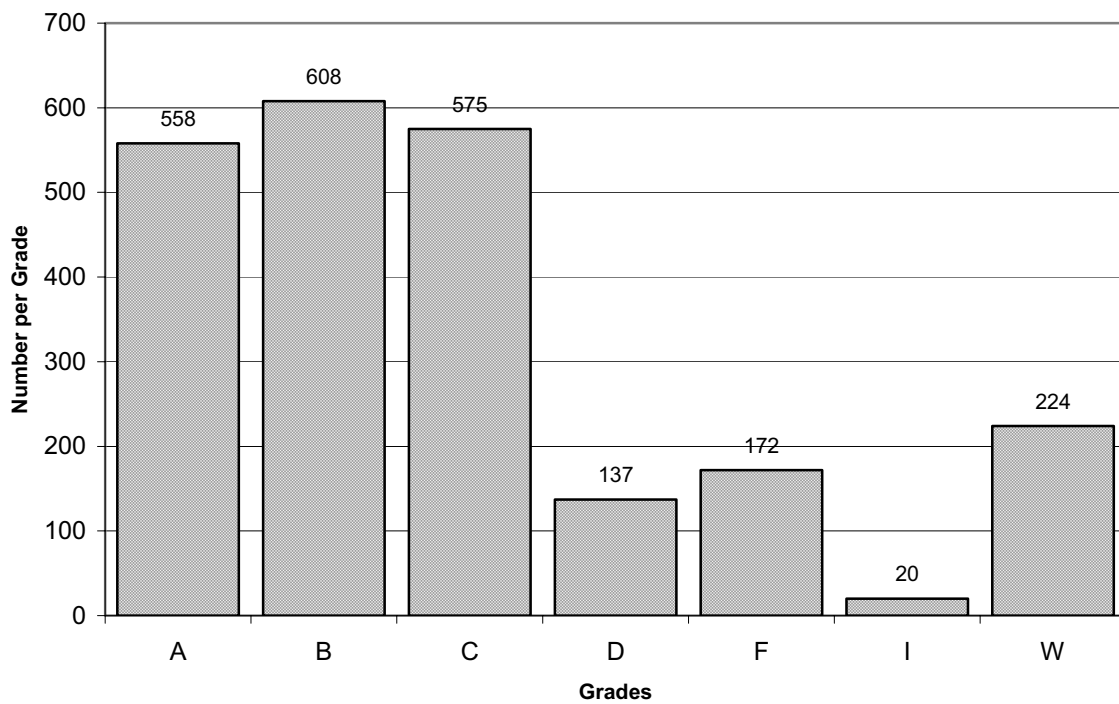
** Students identified as freshmen are noted as such in the CB report.

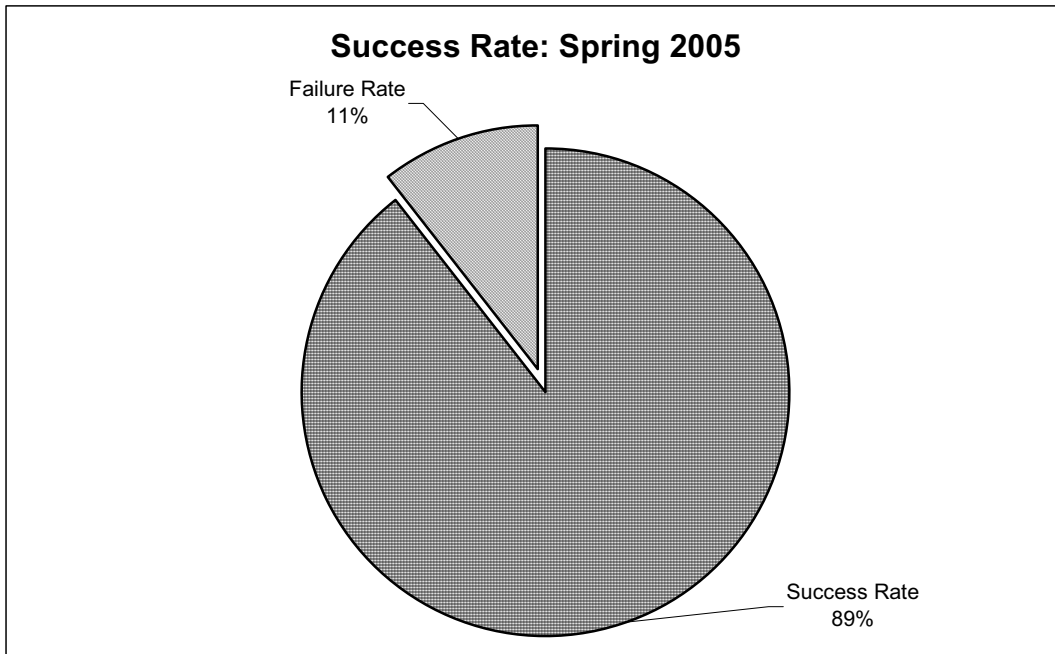


Students Receiving Financial Aid: Spring 2005

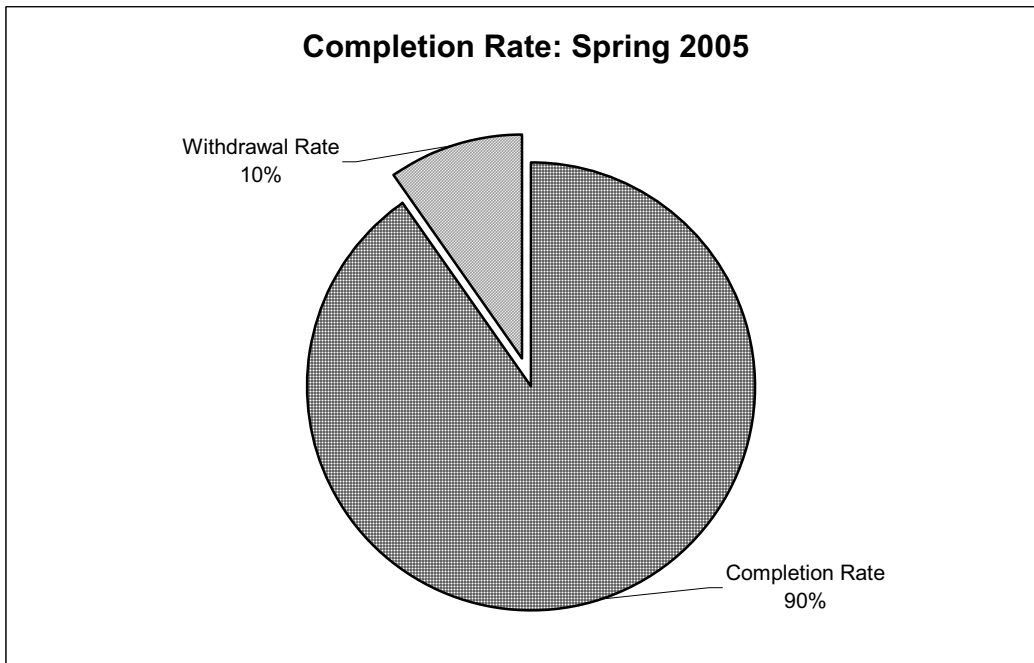


Undergraduate Aggregate Grade Distribution: Spring 2005



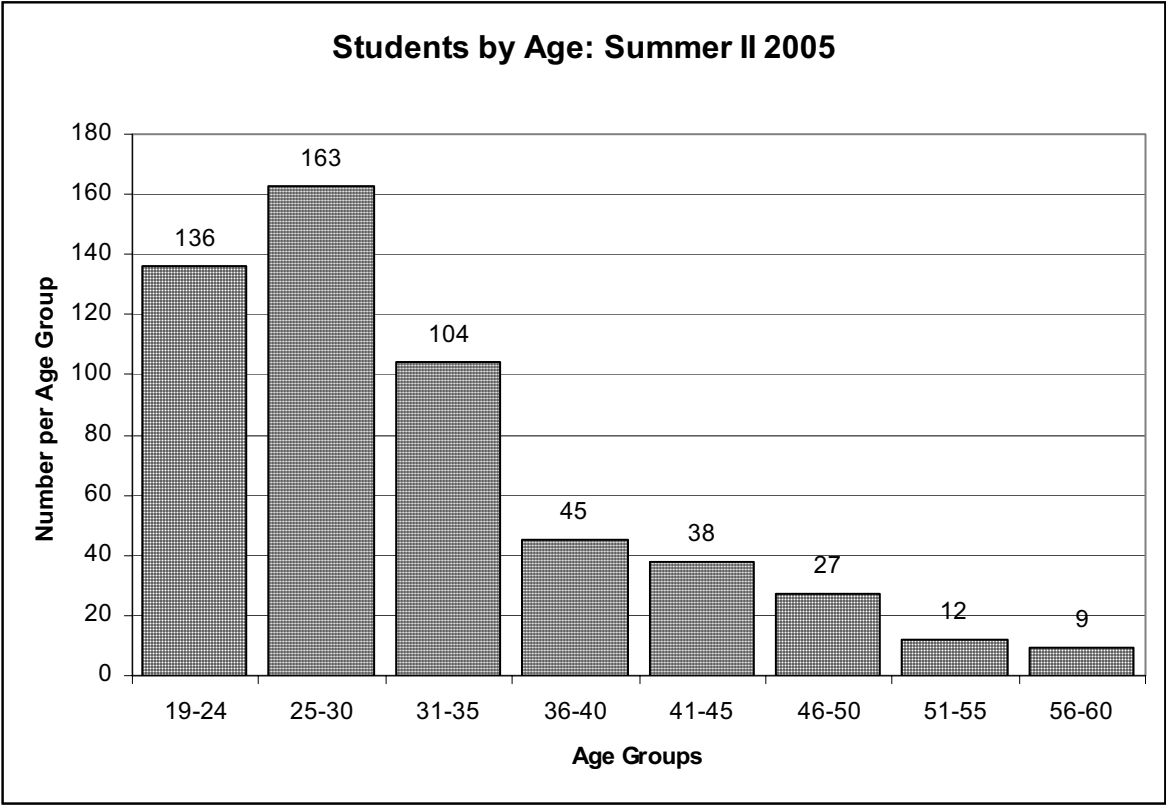
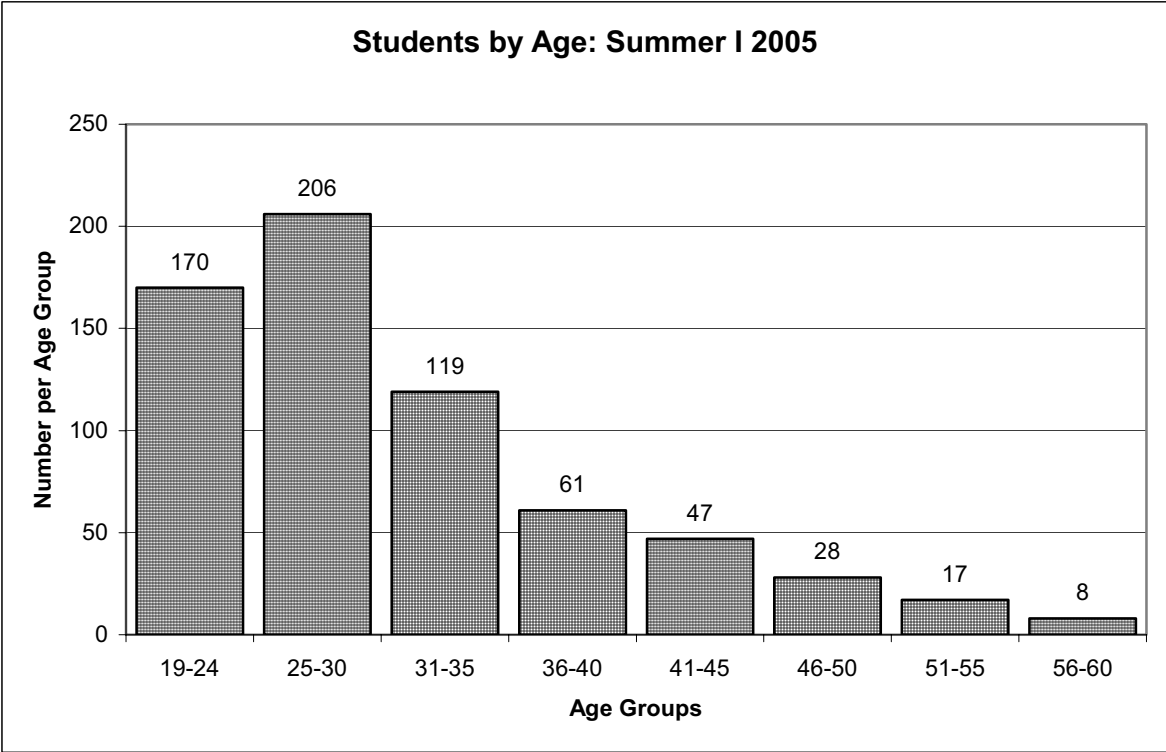


- > Success Rate = total of grades A, B, C, & D.
- > Failure Rate = total of grades F.
- > Grades of I and PR are not included in the calculation as these do not reflect either a completion or failure, rather work that may, or may not, be completed.
- > Grades of W are not included as it is not known what the ultimate grade would have been.

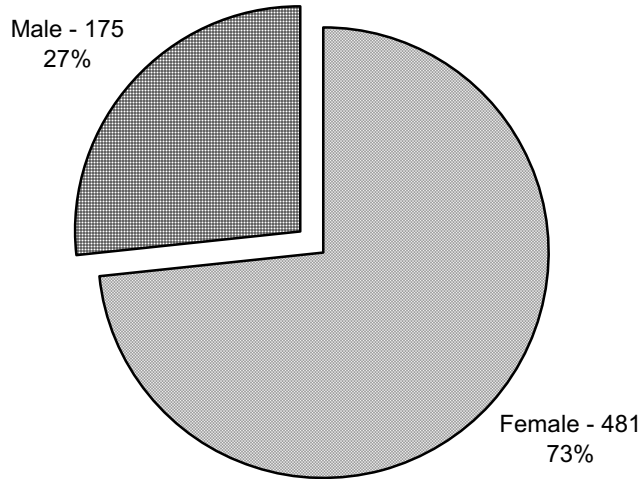


Completion Rate = total of grades A, B, C, D, F, I & PR
 Completion Rate is defined here as conclusion of a class based on assignment of a grade.

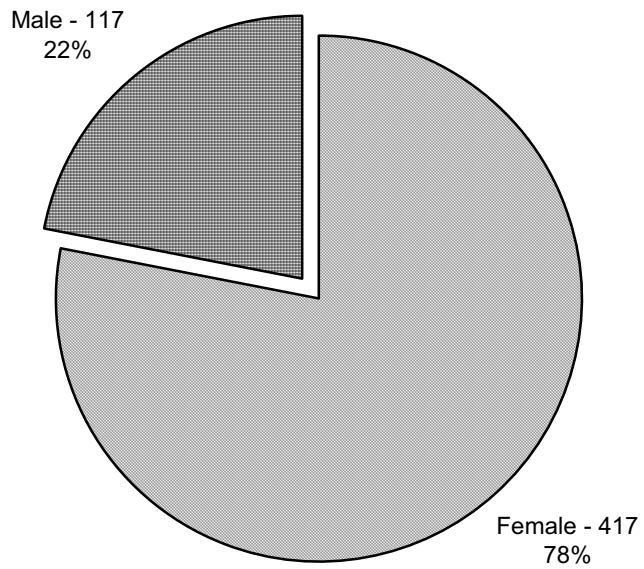
V. STUDENT PROFILE, SUMMER I & II 2005

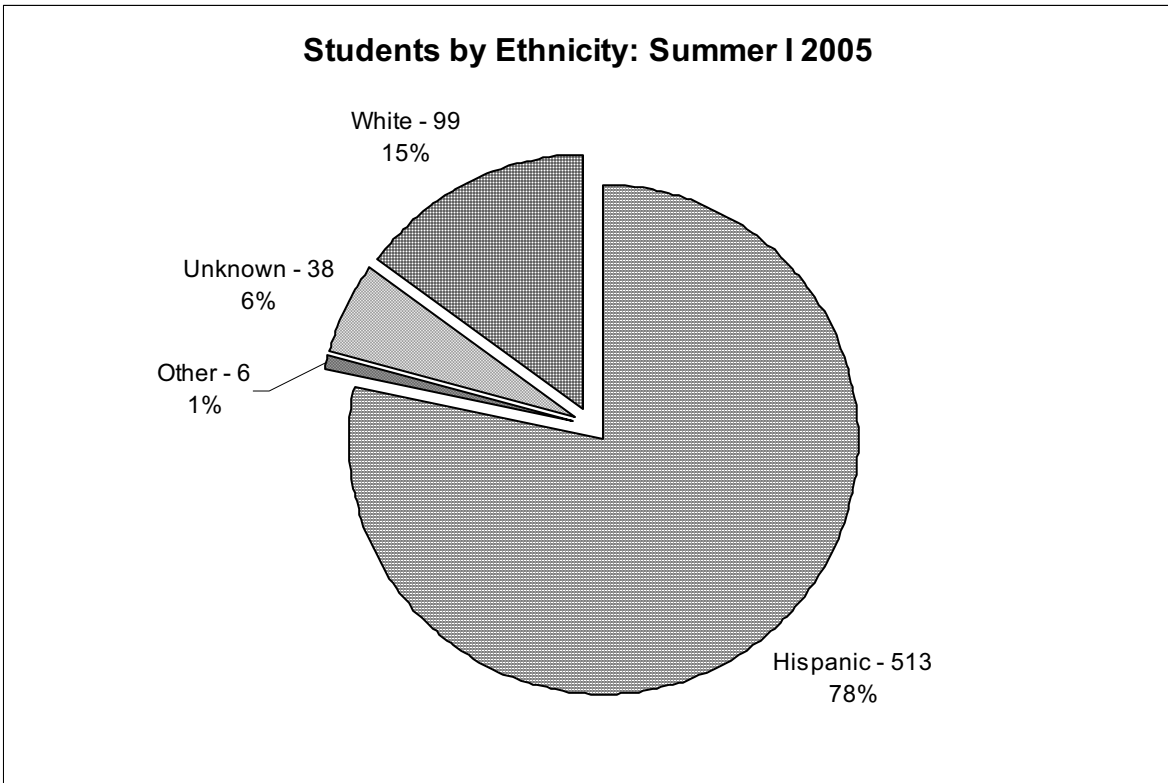


Students by Sex: Summer I 2005

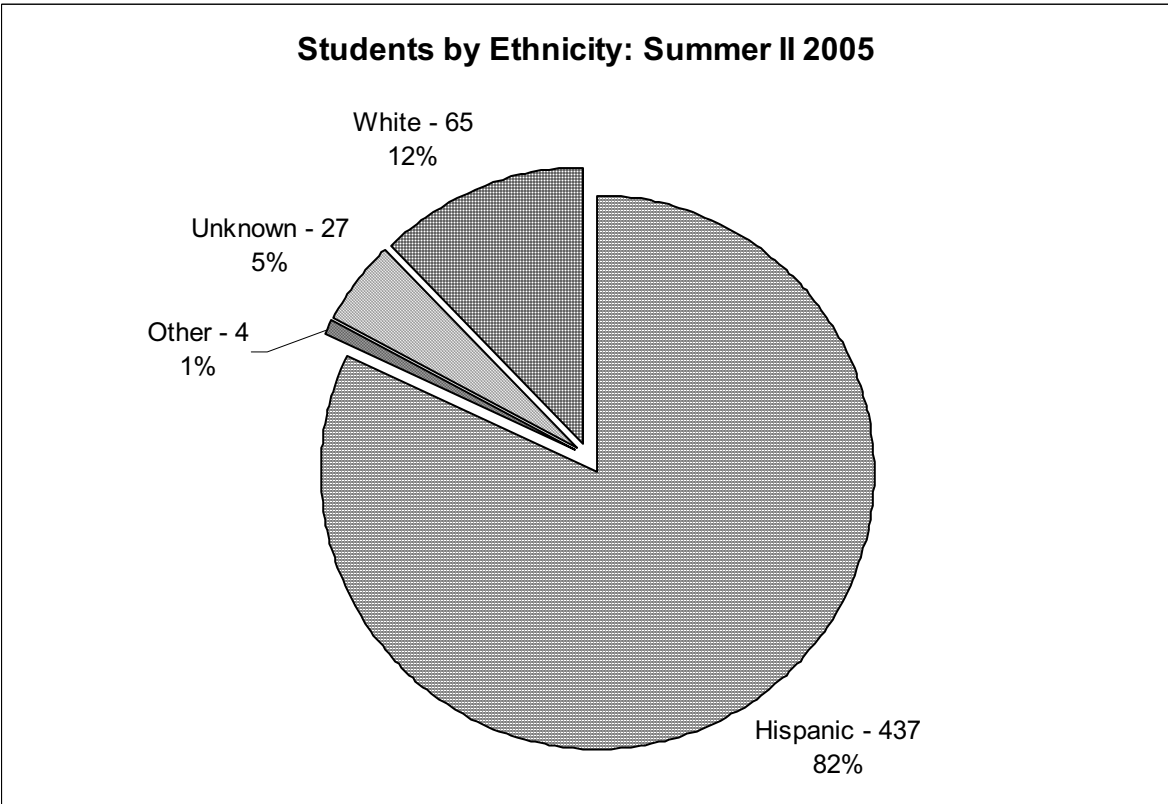


Students by Sex: Summer II 2005



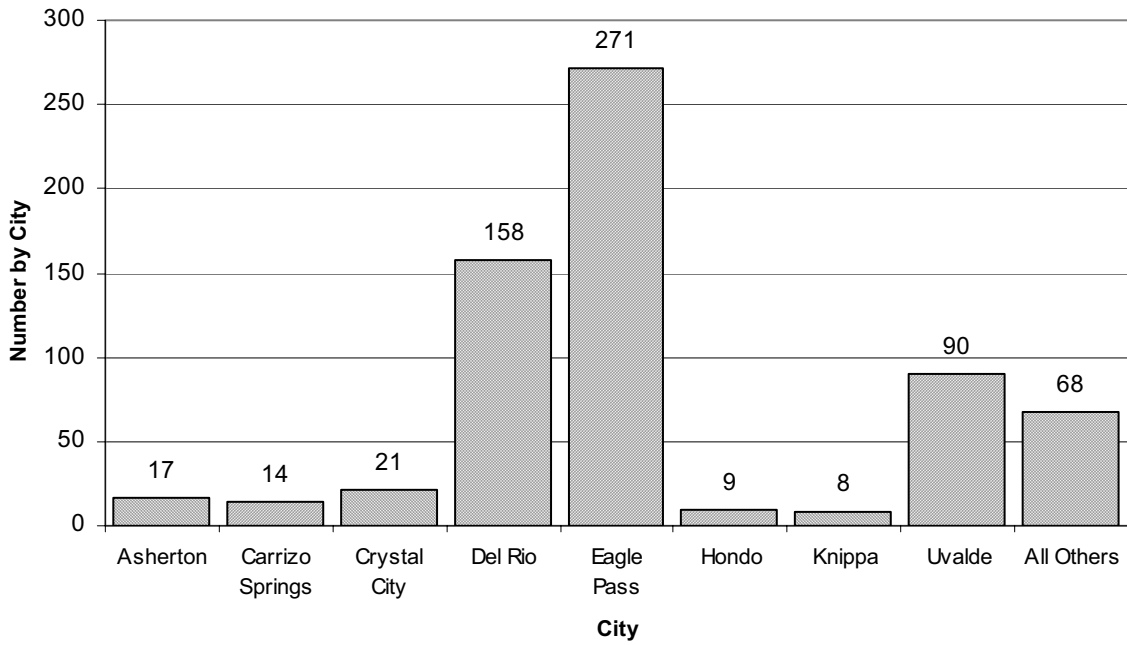


Other = American Indian, Asian, Black & Non-resident Alien

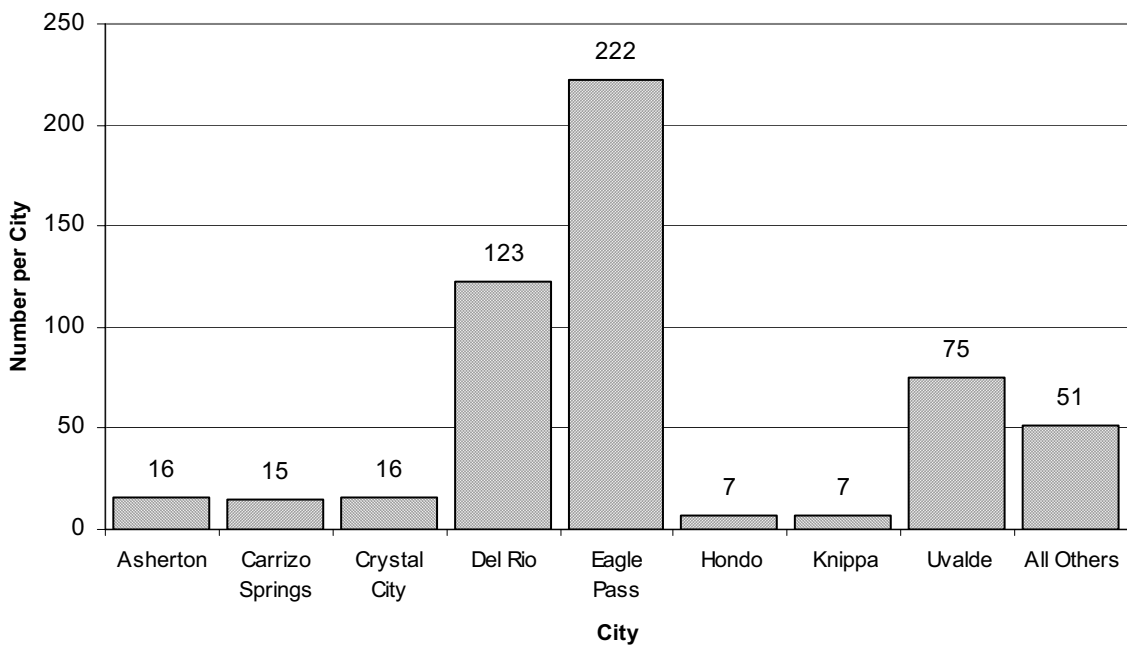


Other = American Indian, Asian, Black, Non-resident Alien, Puerto Rican & Other

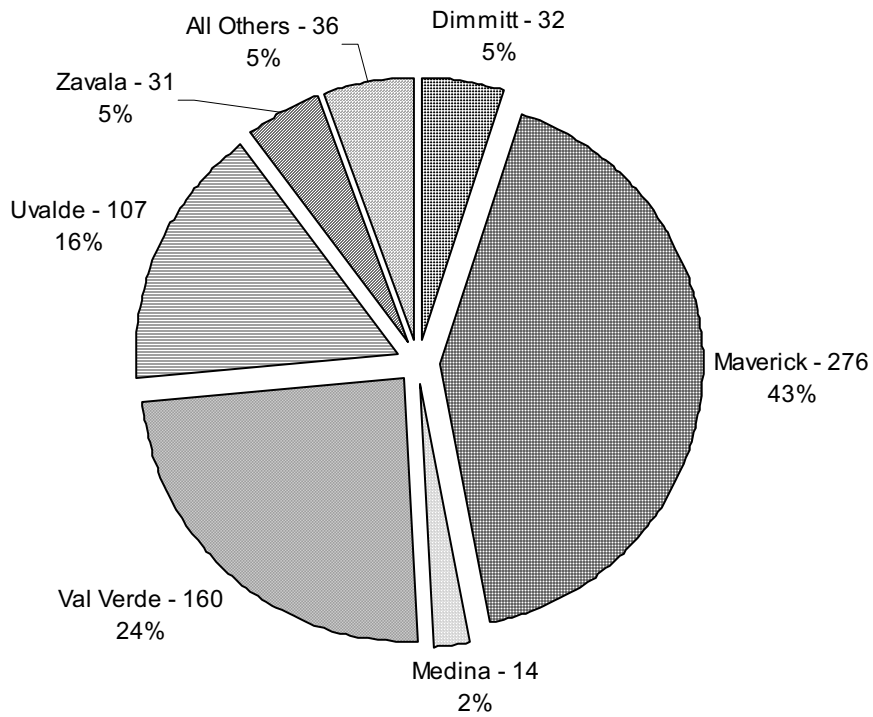
Students by City: Summer I 2005



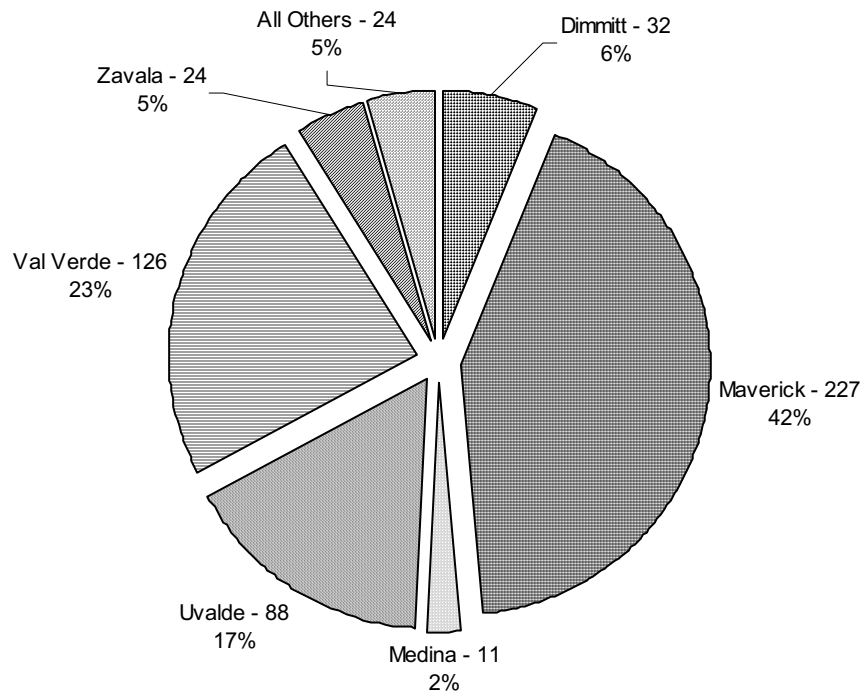
Students by City: Summer II 2005

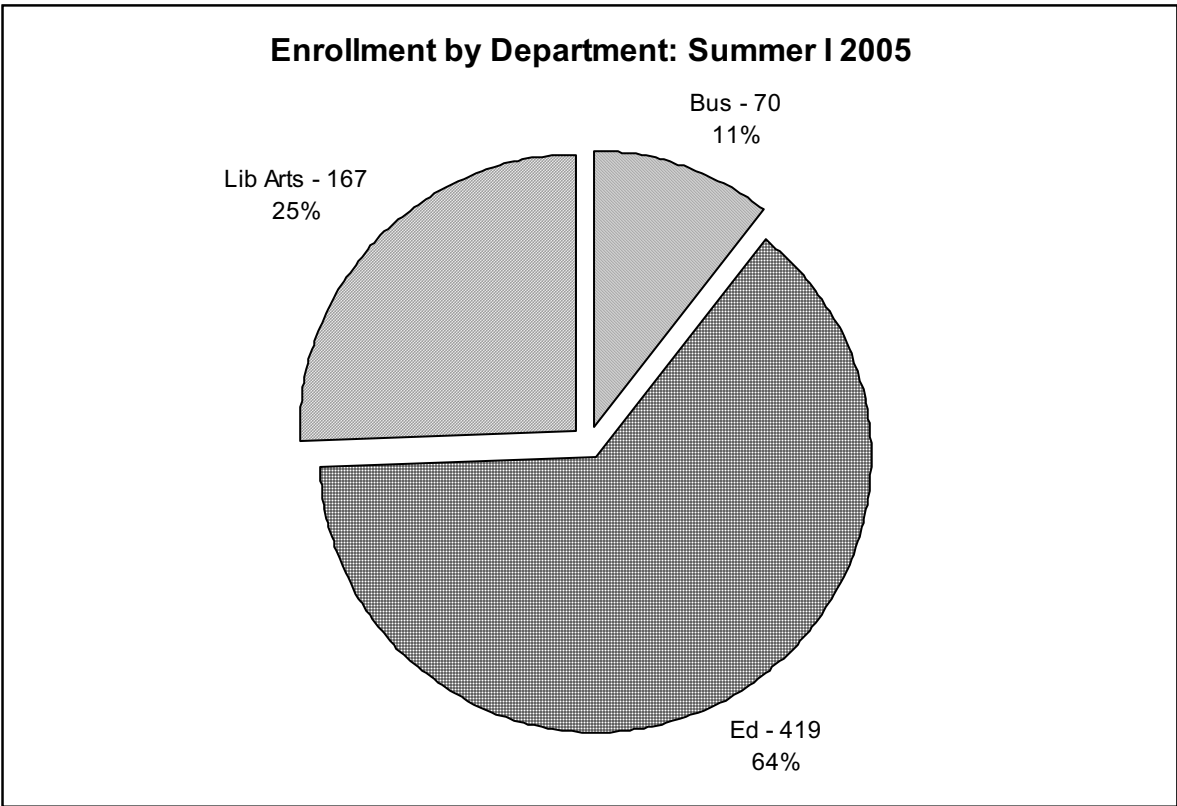


Students by County: Summer I 2005

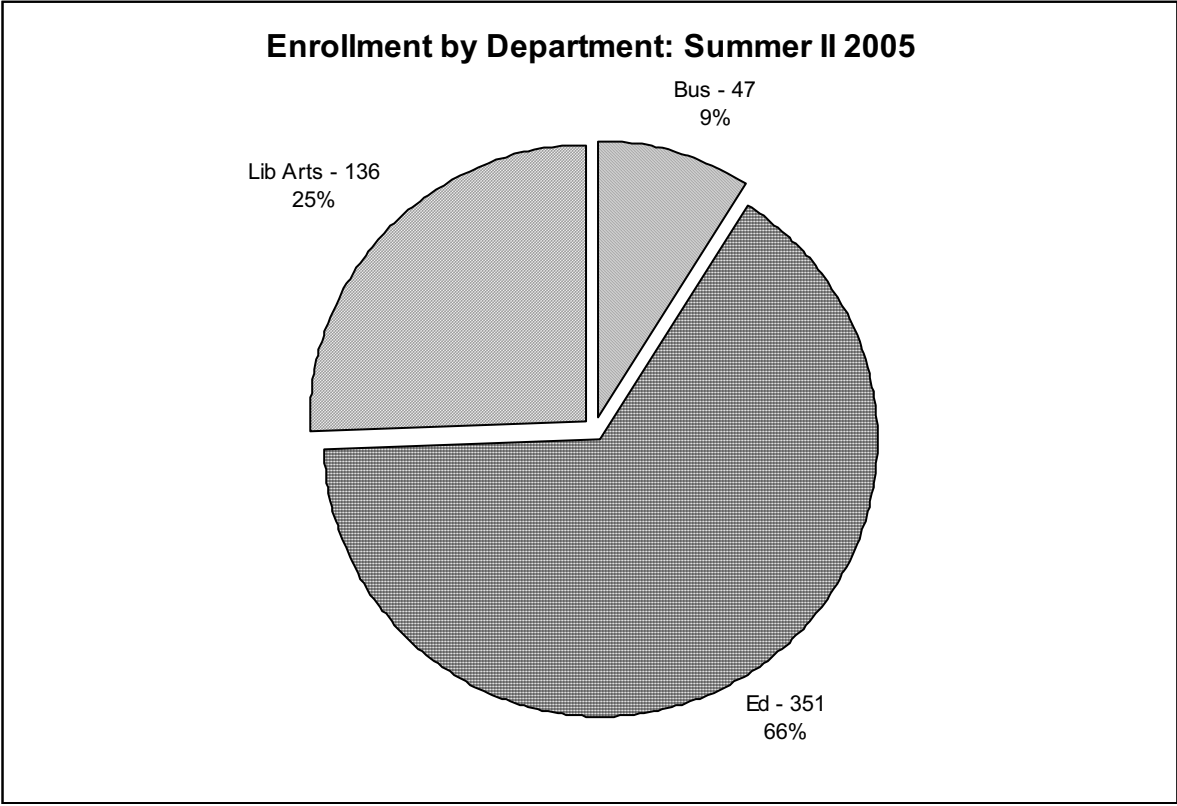


Students by County: Summer II 2005



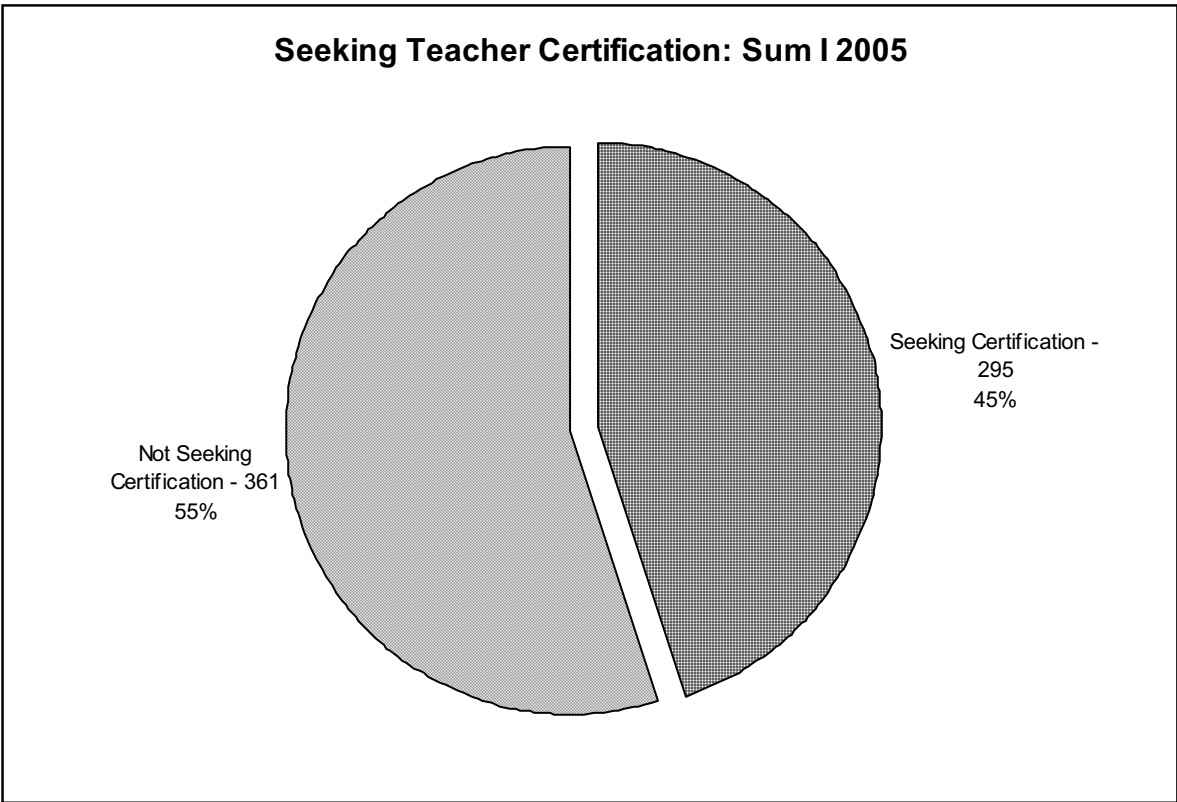


** Enrollment in the education department is inclusive of all students whether seeking initial teacher certification, or additional certification.

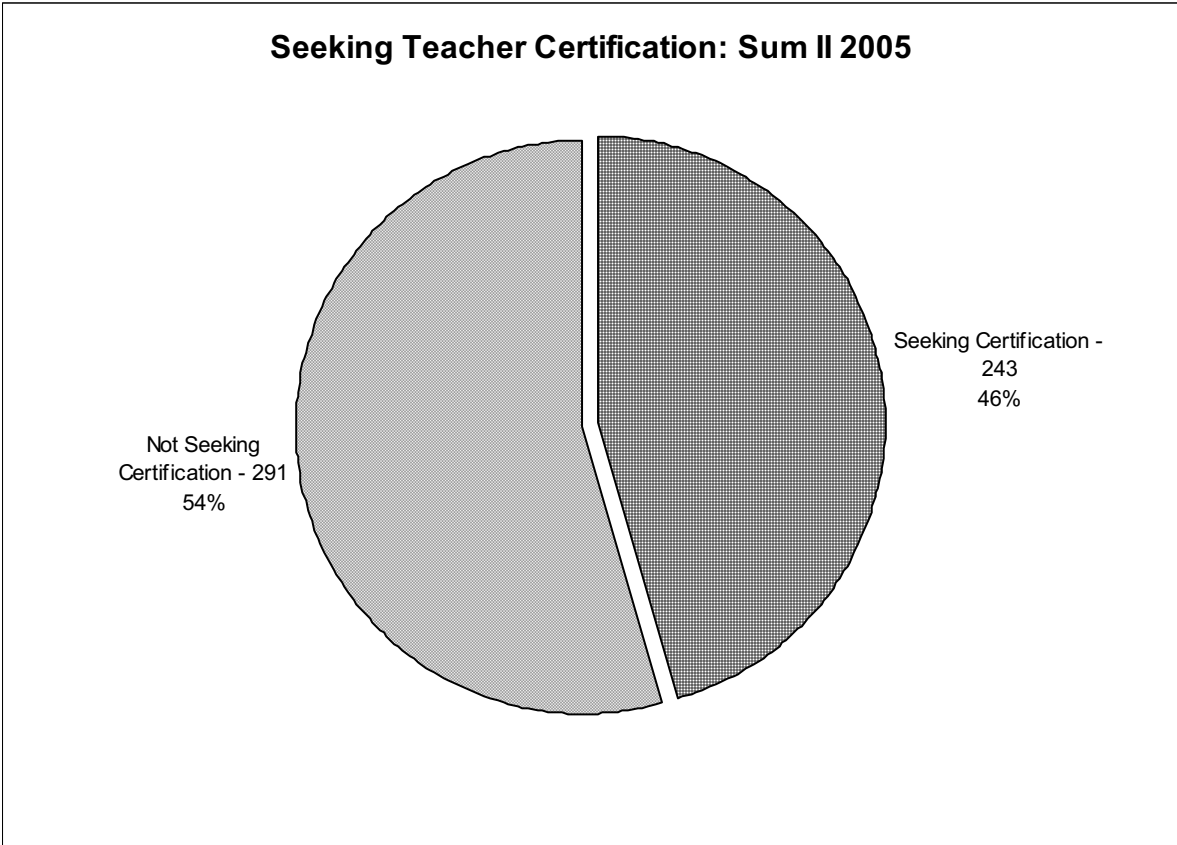


Students by Program: Sum I 2005	
Master of Business Administration	10
Master of Education, Counseling	50
Master of Education, Diagnostician	1
Master of Education, Elementary Education	11
Master of Education, Reading Specialist	6
Master of Education, School Administration	36
Master of Education, School Supervision	5
Master of Education, Secondary Education	5
Bachelor of Arts, English	16
Bachelor of Arts, History	22
Bachelor of Arts, Interdisciplinary Studies	200
Bachelor of Science, Mathematics	14
Bachelor of Arts, Psychology	30
Bachelor of Arts, Social Science	13
Bachelor of Arts, Spanish	10
Bachelor of Business Administration	54
Bachelor of Science, Biology	3
Bachelor of Science, Criminal Justice	38
Bachelor of Science, Interdisciplinary Studies	10
Bachelor of Science, Management Information Systems	6
Post-baccalaureate	105
Undeclared	1
Total	656

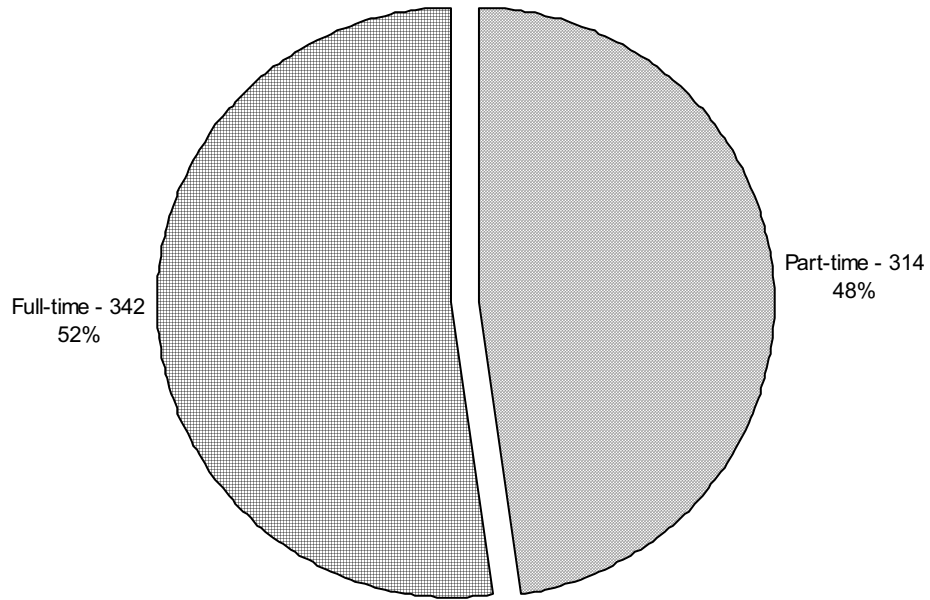
Students by Program: Sum II 2005	
Master of Business Administration	4
Master of Education, Counseling	48
Master of Education, Diagnostician	10
Master of Education, Elementary Education	9
Master of Education, Reading Specialist	5
Master of Education, School Administration	28
Master of Education, School Supervision	2
Master of Education, Secondary Education	5
Bachelor of Arts, English	17
Bachelor of Arts, History	20
Bachelor of Arts, Interdisciplinary Studies	174
Bachelor of Science, Mathematics	7
Bachelor of Arts, Psychology	27
Bachelor of Arts, Social Science	11
Bachelor of Arts, Spanish	9
Bachelor of Business Administration	42
Bachelor of Science, Biology	4
Bachelor of Science, Criminal Justice	29
Bachelor of Science, Interdisciplinary Studies	6
Bachelor of Science, Management Information Systems	1
Post-baccalaureate	75
Undeclared	1
Total	534



** Seeking certification refers to initial teacher certification only.

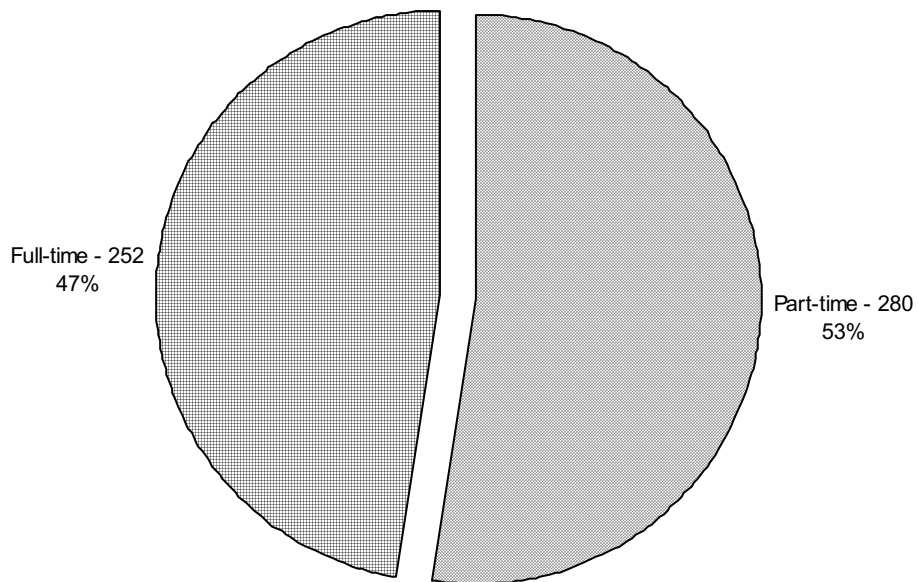


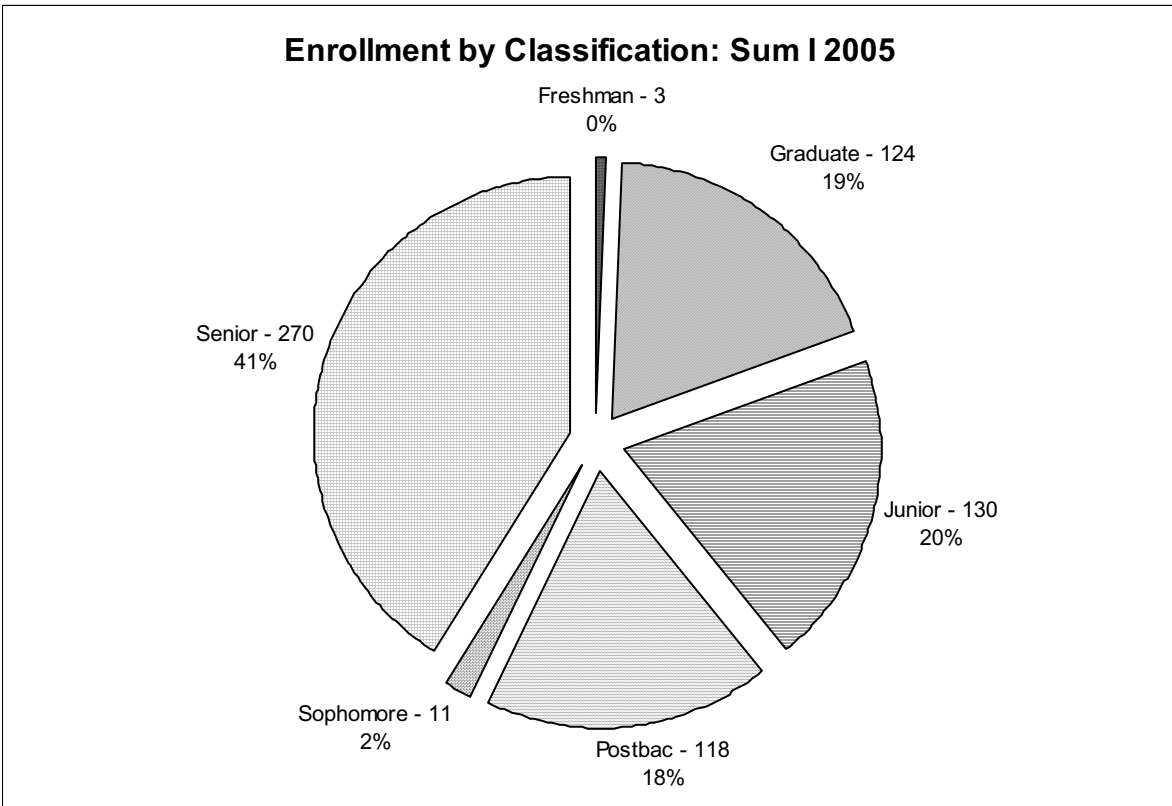
Full & Part-time Enrollment: Sum I 2005



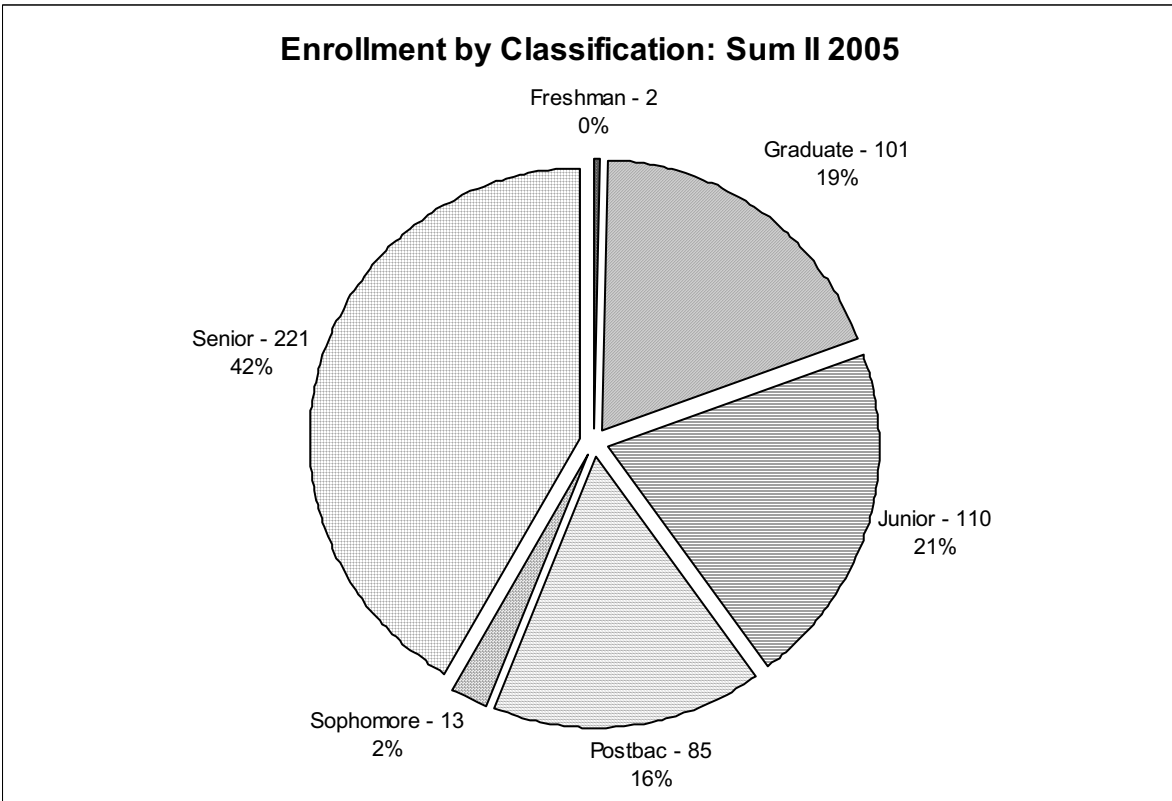
A student who enrolls for 6 or more hours during a summer term is considered full-time.

Full & Part-time Enrollment: Sum II 2005

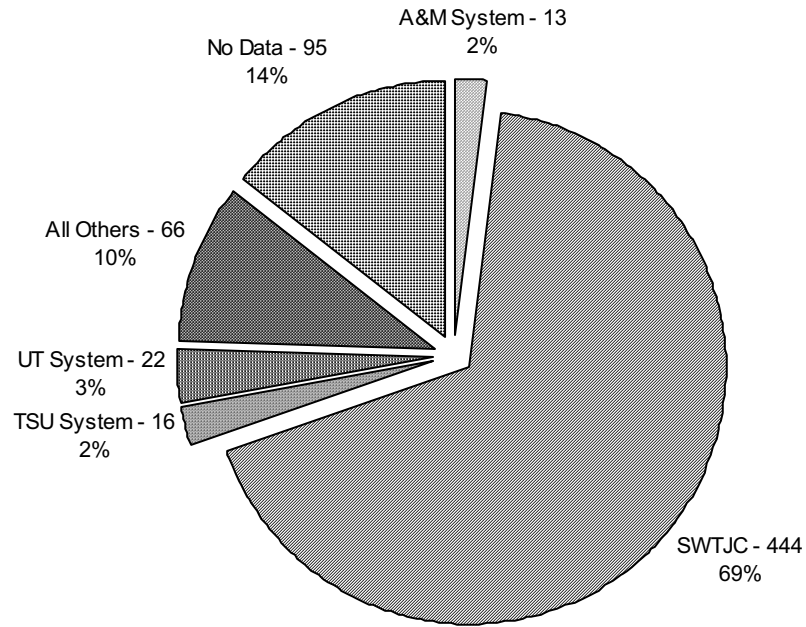




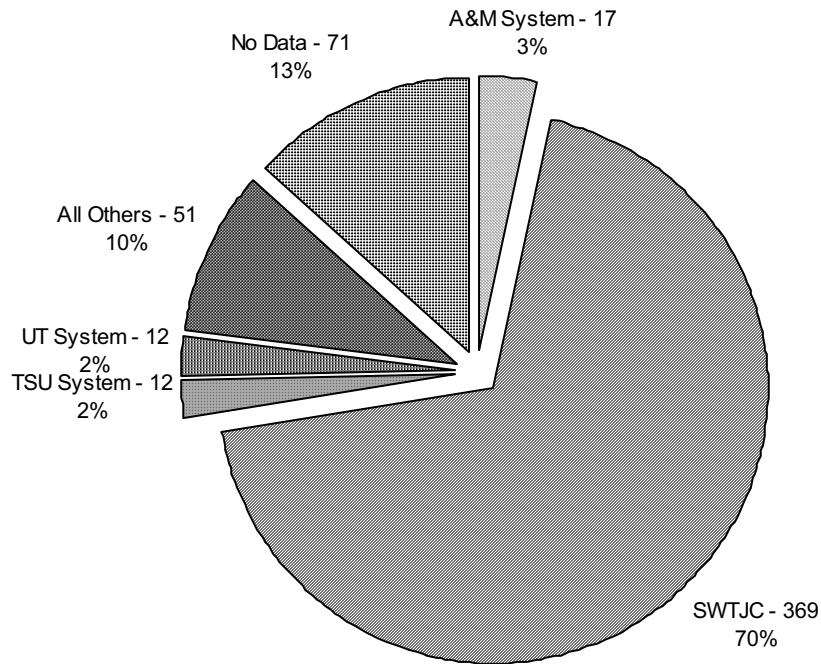
** Students identified as freshmen are noted as such in the CB report.

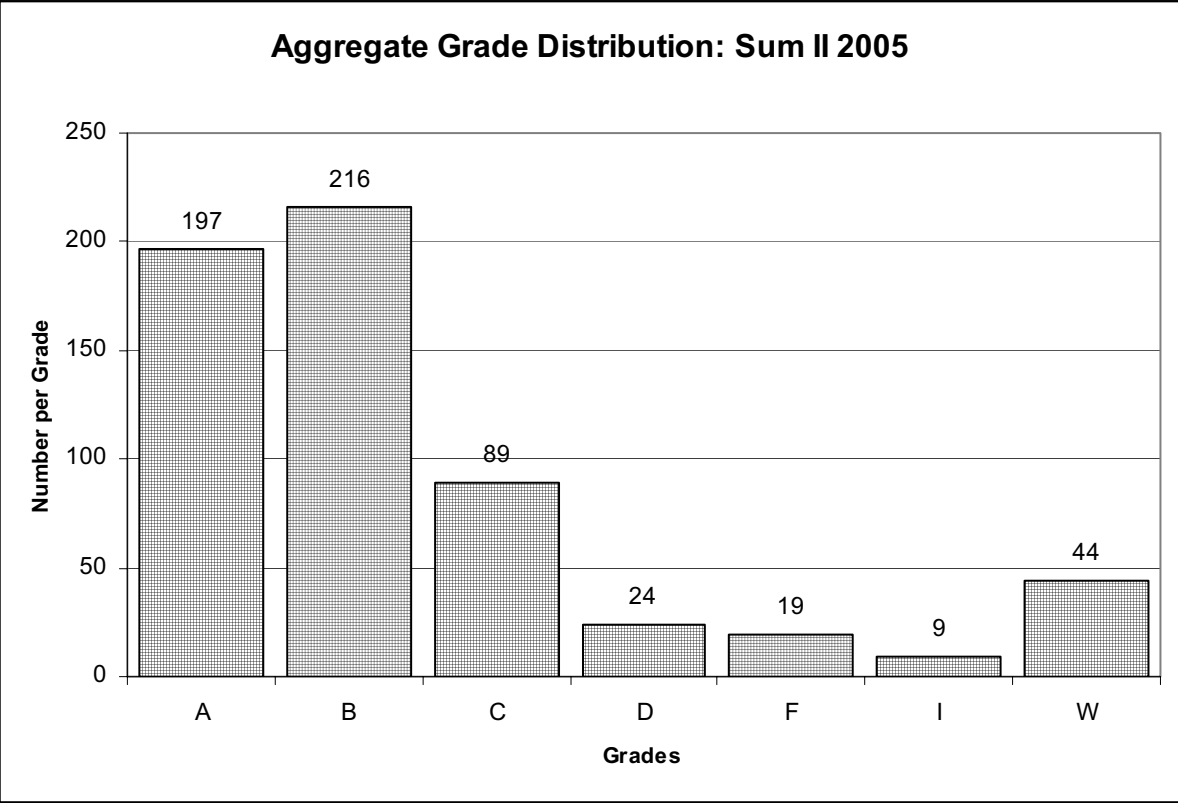
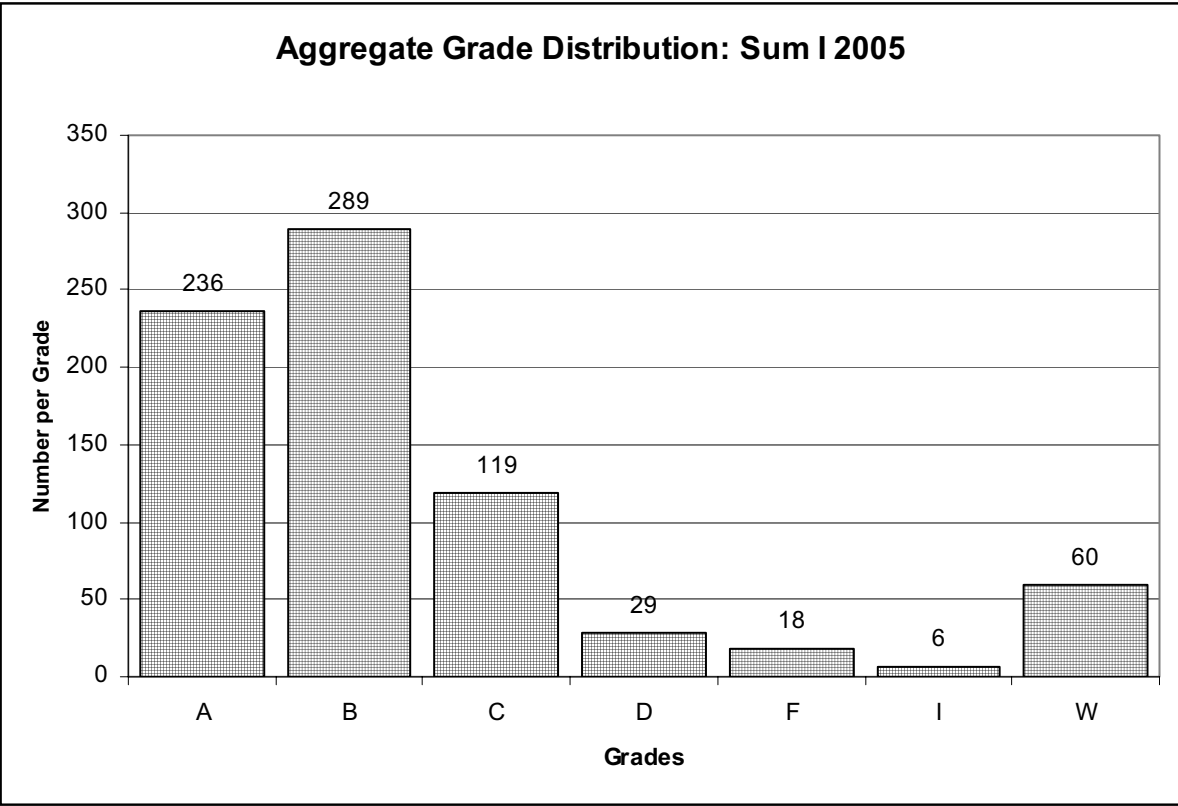


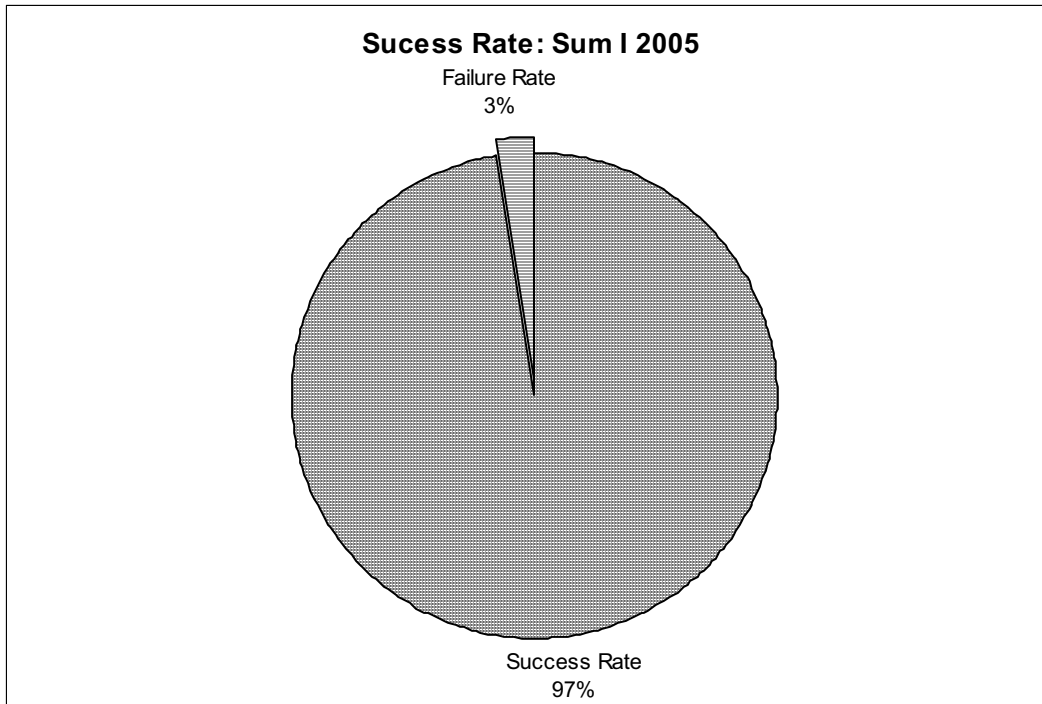
Students by Transfer College: Sum I 2005



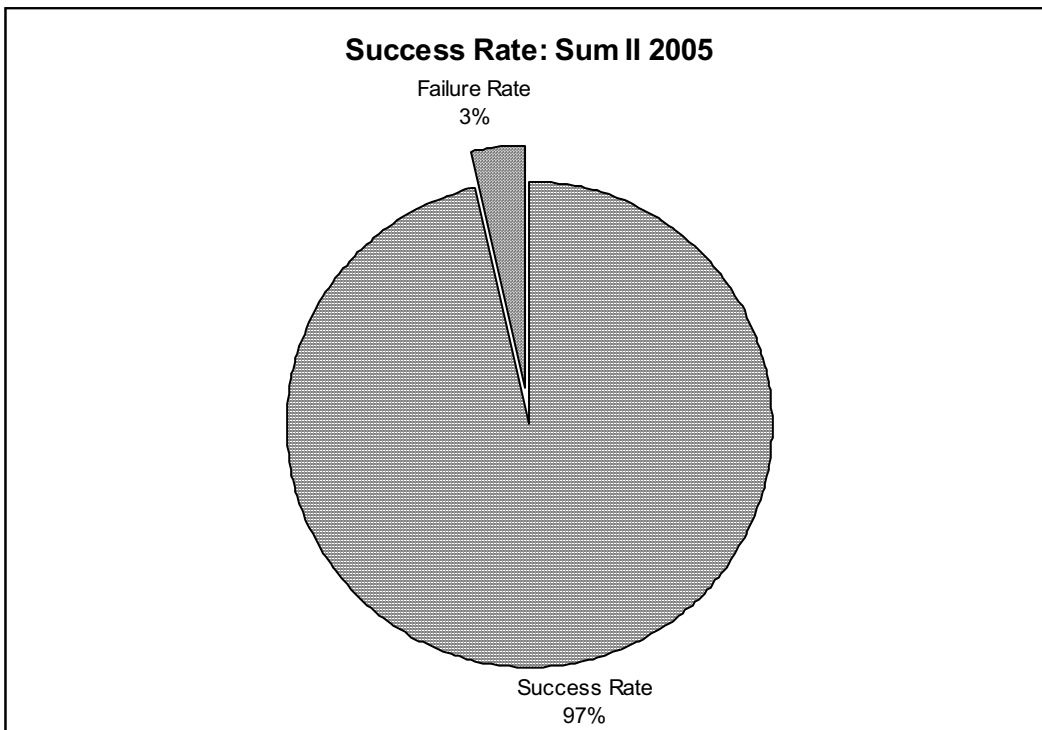
Students by Transfer College: Sum II 2005

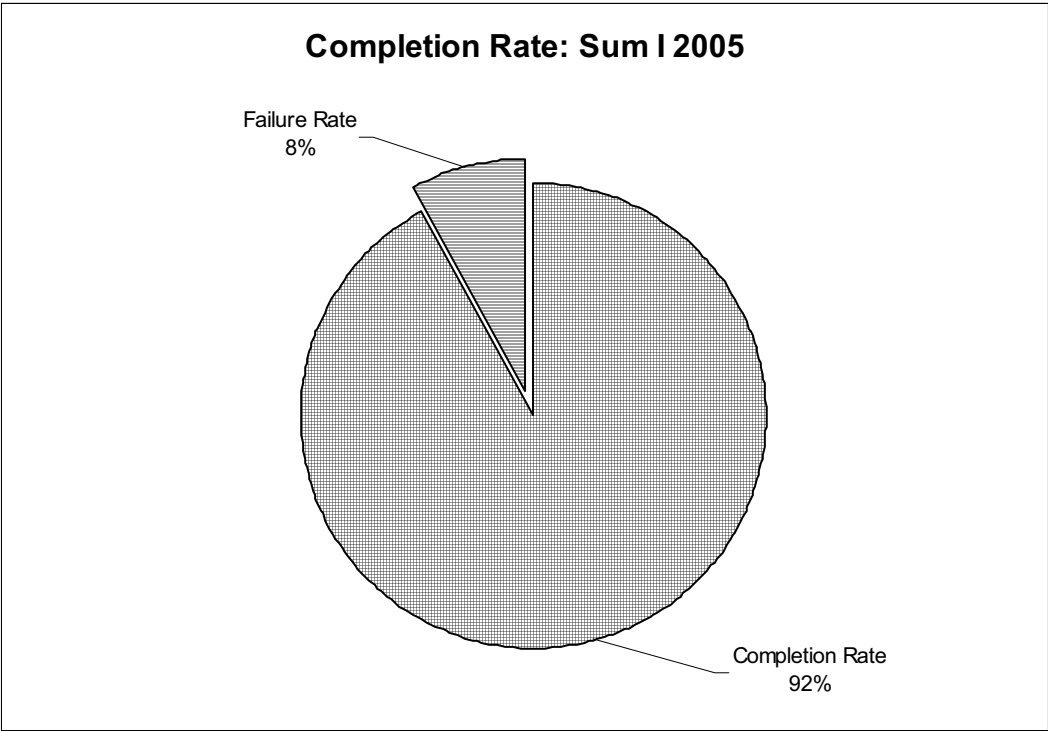




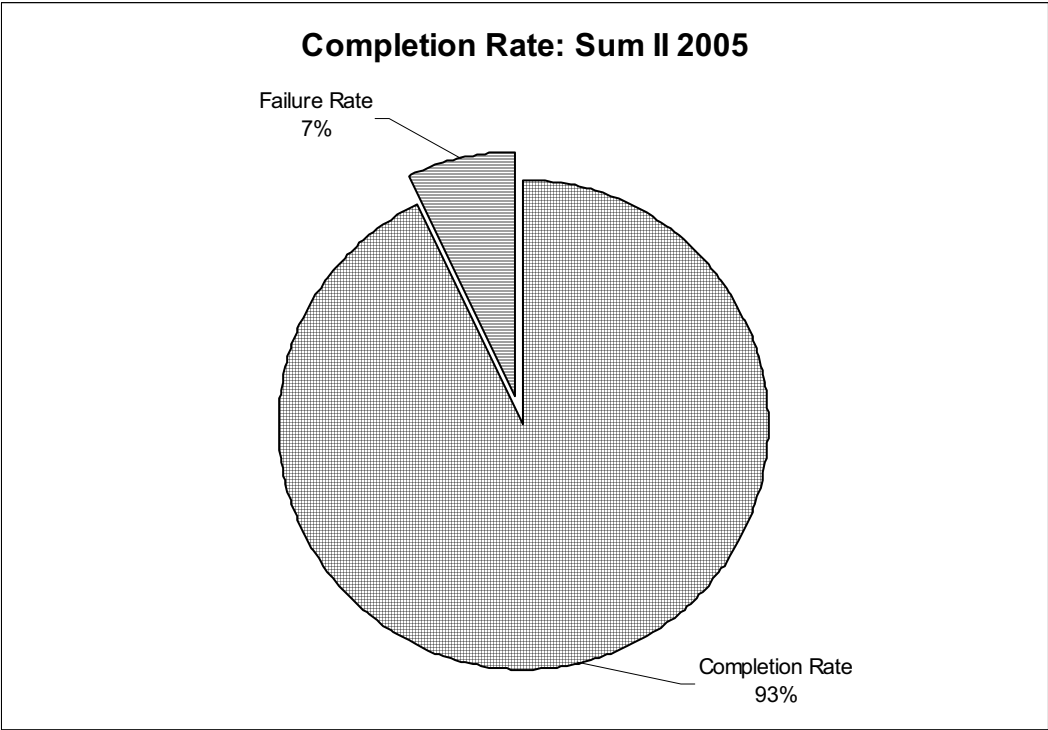


- > Success Rate = total of grades A, B, C, & D.
- > Failure Rate = total of grades F
- > Grades of I are not included in the calculation as these do not reflect either a completion or failure, rather work that may, or may not, be completed.
- > Grades of W are not included as it is not known what the ultimate grade would have been.





Completion Rate = total of grades A, B, C, D, F, I & PR
Completion Rate is defined here as completion of class based on assignment of a grade.



Sul Ross State University Rio Grande College has three commencement ceremonies during the academic school year, in December, May, and August. The following tables provide information on the degrees awarded by SRSU RGC for the 2004-05 academic year.

Degrees Awarded – Fall 2004									
BA	Num	BBA	Num	BS	Num	M.Ed	Num	MBA	Num
English	5	Gen Bus	12	CJ	7	Admin.	6	Gen Bus	3
History	2			Interdisciplinary	5	Coun.	15		
Interdisciplinary	36			Math	2	Gen. Ed	2		
Psychology	6					Reading	1		
Social Science	5					Sec. Ed	2		
Spanish	3								
Totals (112)	57		12		14		26		3

Degrees Awarded – Spring 2005									
BA	Num	BBA	Num	BS	Num	M.Ed	Num	MBA	Num
English	9	Gen Bus	7	CJ	5	Admin.	6	Gen Bus	2
History	1			Interdisciplinary	2	Coun.	9		
Interdisciplinary	25			Math	7	Diag.	1		
Psychology	2					Elem. Ed.	1		
Spanish	2					Sec. Ed.	1		
Social Science	1								
Totals (81)	40		7		14		18		2

Degrees Awarded – Summer 2005									
BA	Num	BBA	Num	BS	Num	M.Ed	Num	MBA	Num
English	4	Gen Bus	3	CJ	2	Admin.	8	Gen Bus	0
History	7			Interdisciplinary	1	Coun.	6		
Interdisciplinary	19			Math	1	Diag.	3		
Psychology	3					Elem. Ed.	1		
						Sec. Ed.	2		
						Super	1		
Totals (60)	33		3		4		21		0

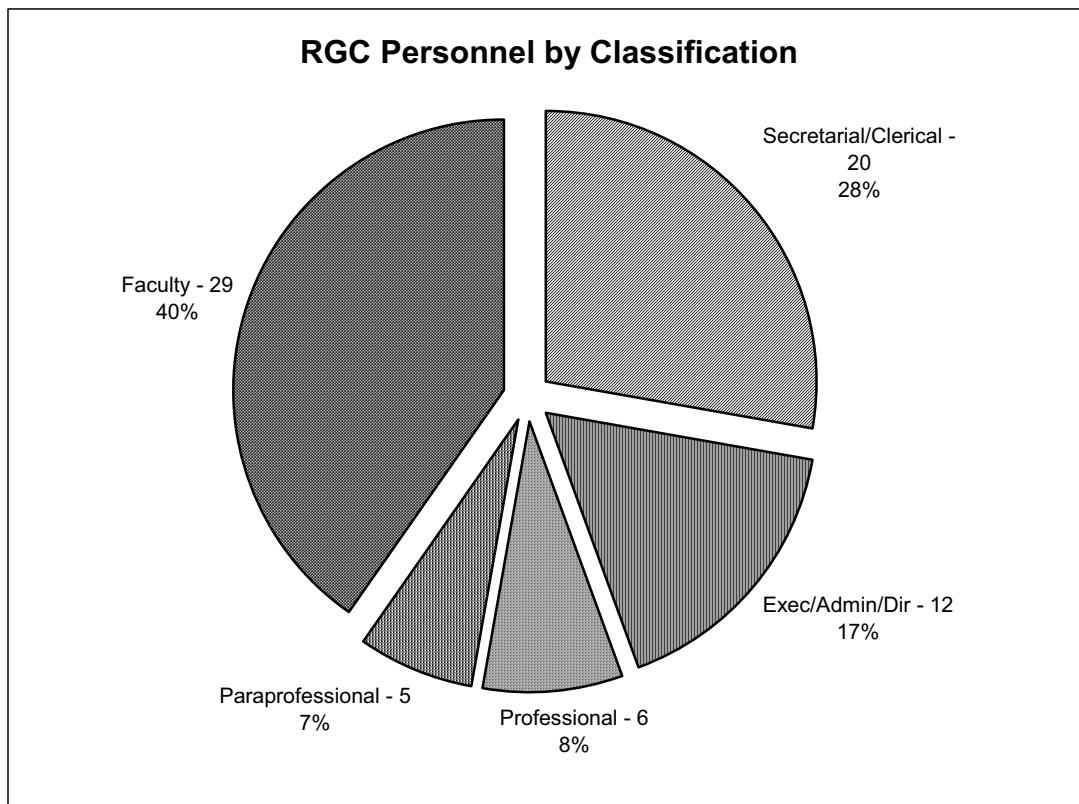
Total Degrees Awarded: AY 2004-2005									
BA	Num	BBA	Num	BS	Num	M.Ed	Num	MBA	Num
English	18	Gen Bus	22	CJ	14	Admin.	20	Gen Bus	5
History	10			Interdisciplinary	8	Coun.	30		
Interdisciplinary	80			Math	10	Diag.	4		
Psychology	11					Elem. Ed.	2		
Social Science	6					Gen. Ed.	2		
Spanish	5					Reading	1		
						Sec. Ed.	5		
						Super	1		
Totals (254)	130		22		32		65		5

VI. RGC PERSONNEL 2004-2005

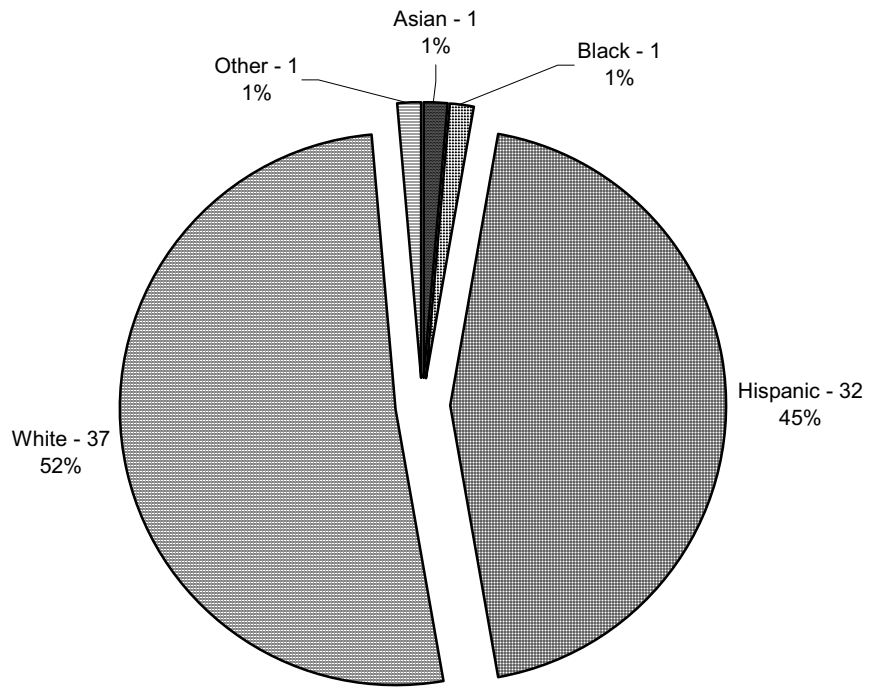
PERSONNEL PROFILE

RGC Personnel by Classification, Ethnicity and Gender												
Ethnicity >>>	Asian		Black		Hispanic		Other		White		Totals	
Gender >>>	M	F	M	F	M	F	M	F	M	F	M	F
*Exec/Admin/Dir	0	0	0	0	7	1	0	1	1	2	8	4
Professional	0	0	0	0	1	5	0	0	0	0	1	5
Faculty	1	0	0	0	3	2	0	0	17	6	21	8
Tech/Paraprofessional	0	0	0	1	1	0	0	0	3	0	4	1
Secretary/Clerical	0	0	0	0	0	12	0	0	0	8	0	20
Skilled Craft	0	0	0	0	0	0	0	0	0	0	0	0
Service/Maintenance	0	0	0	0	0	0	0	0	0	0	0	0
Totals	1	0	0	1	12	20	0	1	21	16	34	38

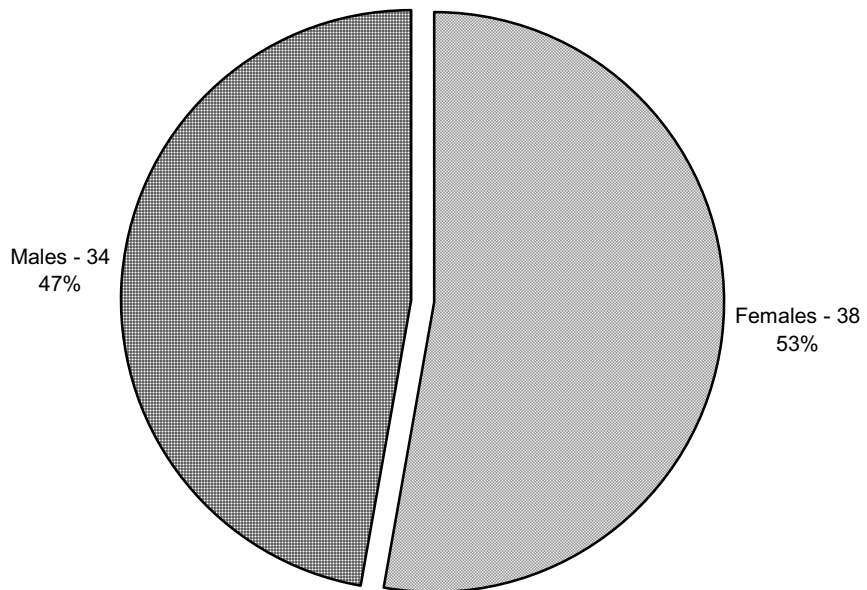
*One individual is classified both as an administrator and a faculty member.



RGC Personnel by Ethnicity



RGC Personnel by Sex



FACULTY PROFILE

Faculty by Degree		
Degree	Status	Total
Doctorate	Full-Time	29
Doctorate	Adjunct	2
Masters	Adjunct	22
Total	-----	53

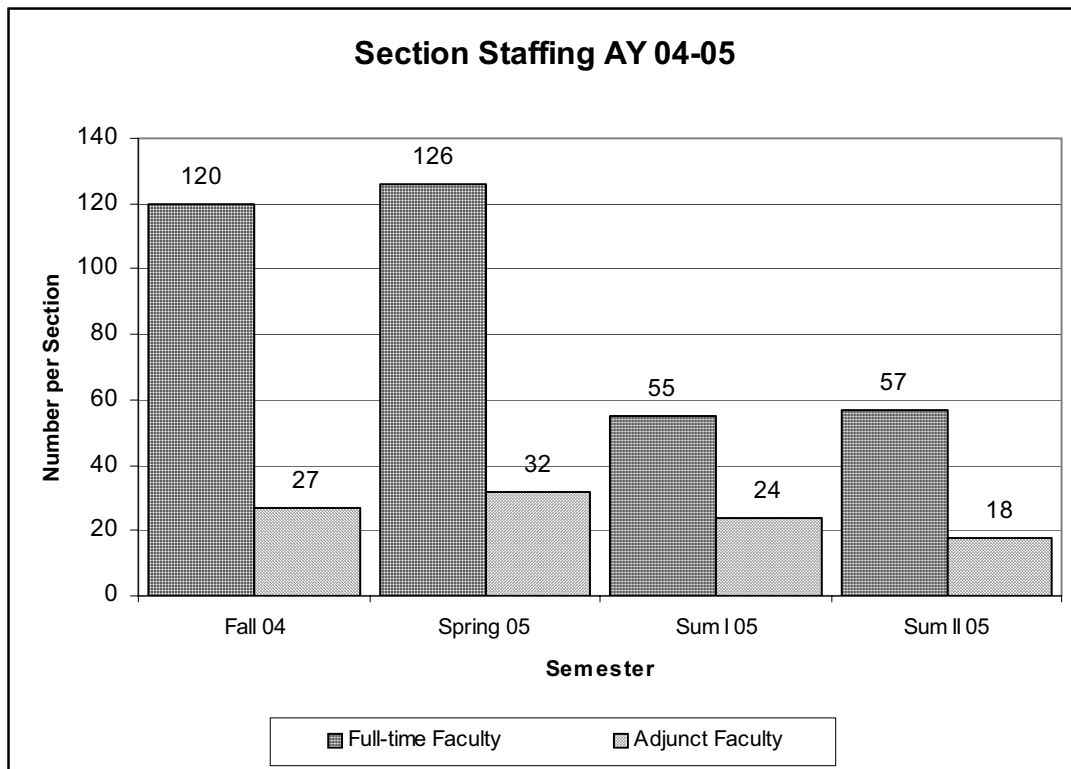
Faculty by Years of Service								
1 – 5 Years	6 – 10 Years	11 – 15 Years	16 – 20 Years	21 – 25 Years	26-30 Years	31-35 Years	36-40 Years	41-45
12	7	6	1	0	1	1	0	1

Faculty by Ethnicity & Sex				
Ethnicity / Race	Male	Female	Totals	Percent
White	16	6	22	75.86%
Hispanic	4	2	6	20.69%
Asian	1	0	1	3.45%
Totals	21	8	29	100%

Faculty by Department				
Department	Male	Female	Totals	Percent
Business	5	0	5	17.24%
Education	9	4	13	44.82%
Liberal Arts	8	3	11	37.93%
Nursing	0	1	1	3.45%
Totals	21	8	29	100%

SECTION STAFFING

Section Staffing For AY 2004-05						
	Full-time	Percent	Adjunct	Percent	Total	Percent
Fall	120	82%	27	18%	147	100%
Spring	126	80%	32	20%	158	100%
Summer I	55	70%	24	30%	79	100%
Summer II	51	74%	18	26%	69	100%



VI. FINANCES: 2004-2005

TUITION AND MANDATORY FEES Based on FALL 2004 Rates

Texas Resident

Sem. Hrs.	Tuition Per Sem. Hours	Tuition Gen. Use Fee	Total Tuition + Tuition Gen. Use	Student Service Fee	Intrn'l Educ. Fee	Computer Access Fee	Tech Fee	Library Fee	Pub & Records Fee	Total
1	48.00	16.00	64.00	15.00	1.00	4.00	8.00	2.00	10.00	106.00
2	96.00	32.00	128.00	30.00	1.00	8.00	16.00	4.00	10.00	201.00
3	144.00	48.00	192.00	45.00	1.00	12.00	24.00	6.00	10.00	296.00
4	192.00	64.00	256.00	60.00	1.00	16.00	32.00	8.00	10.00	391.00
5	240.00	80.00	320.00	75.00	1.00	20.00	40.00	10.00	10.00	486.00
6	288.00	96.00	384.00	90.00	1.00	24.00	48.00	12.00	10.00	581.00
7	336.00	112.00	448.00	105.00	1.00	28.00	56.00	14.00	10.00	676.00
8	384.00	128.00	512.00	120.00	1.00	32.00	64.00	16.00	10.00	771.00
9	432.00	144.00	576.00	135.00	1.00	36.00	72.00	18.00	10.00	866.00
10	480.00	160.00	640.00	140.00	1.00	40.00	80.00	20.00	10.00	951.00
11	528.00	176.00	704.00	140.00	1.00	44.00	88.00	22.00	10.00	1,031.00
12	576.00	192.00	768.00	140.00	1.00	48.00	96.00	24.00	10.00	1,111.00
13	624.00	208.00	832.00	140.00	1.00	52.00	104.00	26.00	10.00	1,191.00
14	672.00	224.00	896.00	140.00	1.00	56.00	112.00	28.00	10.00	1,271.00
15	720.00	240.00	960.00	140.00	1.00	60.00	120.00	30.00	10.00	1,351.00
16	768.00	256.00	1,024.00	140.00	1.00	64.00	128.00	32.00	10.00	1,431.00
17	816.00	272.00	1,088.00	140.00	1.00	68.00	136.00	34.00	10.00	1,511.00
18	864.00	288.00	1,152.00	140.00	1.00	72.00	144.00	36.00	10.00	1,591.00
19	912.00	304.00	1,216.00	140.00	1.00	76.00	152.00	38.00	10.00	1,671.00
20	960.00	320.00	1,280.00	140.00	1.00	80.00	160.00	40.00	10.00	1,751.00
21	1008.00	336.00	1,344.00	140.00	1.00	84.00	168.00	42.00	10.00	1,831.00

Non-Resident & Foreign

1	306.00	16.00	322.00	15.00	1.00	4.00	10.00	2.00	10.00	364.00
2	612.00	32.00	644.00	30.00	1.00	8.00	20.00	4.00	10.00	717.00
3	918.00	48.00	966.00	45.00	1.00	12.00	30.00	6.00	10.00	1,070.00
4	1,224.00	64.00	1,288.00	60.00	1.00	16.00	40.00	8.00	10.00	1,423.00
5	1,530.00	80.00	1,610.00	75.00	1.00	20.00	50.00	10.00	10.00	1,776.00
6	1,836.00	96.00	1,932.00	90.00	1.00	24.00	60.00	12.00	10.00	1,129.00
7	2,142.00	112.00	2,254.00	105.00	1.00	28.00	70.00	14.00	10.00	2,482.00
8	2,448.00	128.00	2,576.00	120.00	1.00	32.00	80.00	16.00	10.00	2,835.00
9	2,754.00	144.00	2,898.00	135.00	1.00	36.00	90.00	18.00	10.00	3,188.00
10	3,060.00	160.00	3,220.00	140.00	1.00	40.00	100.00	20.00	10.00	3,531.00
11	3,366.00	176.00	3,542.00	140.00	1.00	44.00	110.00	22.00	10.00	3,869.00
12	3,672.00	192.00	3,864.00	140.00	1.00	48.00	120.00	24.00	10.00	4,207.00
13	3,978.00	208.00	4,186.00	140.00	1.00	52.00	130.00	26.00	10.00	4,545.00
14	4,284.00	224.00	4,508.00	140.00	1.00	56.00	140.00	28.00	10.00	4,883.00
15	4,590.00	240.00	4,830.00	140.00	1.00	60.00	150.00	30.00	10.00	5,221.00
16	4,896.00	256.00	5,152.00	140.00	1.00	64.00	160.00	32.00	10.00	5,559.00
17	5,202.00	272.00	5,474.00	140.00	1.00	68.00	170.00	34.00	10.00	5,897.00

18	5,508.00	288.00	5,769.00	140.00	1.00	72.00	180.00	36.00	10.00	6,235.00
19	5,814.00	304.00	6,118.00	140.00	1.00	76.00	190.00	38.00	10.00	5,573.00
20	6,120.00	320.00	6,440.00	140.00	1.00	80.00	200.00	40.00	10.00	6,911.00
21	6,426.00	336.00	6,762.00	140.00	1.00	84.00	210.00	42.00	10.00	7,249.00

Tuition and Fees are subject to change by the Texas Legislature and or the Board of Regents of the Texas State University System

TUITION AND FEES

Student Teaching Fee.....	50.00
Graduation Fee.....	15.00
<i>In absentia</i> Fee.....	15.00
Late Fee	10.00

The table below provides a breakdown of the number of students awarded financial aid, the type of aid awarded and the total awarded for the 2004-2005 academic year.

RGC Financial Aid Award: 2004-2005						
Programs	Under-graduate Students	Amount Awarded	Graduate Students	Amount Awarded	Total Awarded	
Federal Pell Grant	568	1,498,153.32	--	--	1,498,153.32	
Supplemental Education Opportunity Grant (SEOG)	67	42,395.87	--	--	42,395.87	
Texas State Grants (TPEG, SSEG, TTAG)	246	399,711.97	58	78,356.80	478,068.77	
Federal Work Study	19	21,481.31	2	1,557.88	23,039.19	
Federal Stafford Loans	527	1,806,906.08	190	793,016.85	2,599,922.93	
Scholarships & Grants	Internal	163	103,510.00	44	26,980.50	130,490.50
	External	66	46,250.79	14	16,853.25	63,104.04
Totals	1,656	3,918,409.34	308	916,765.28	4,835,174.61	

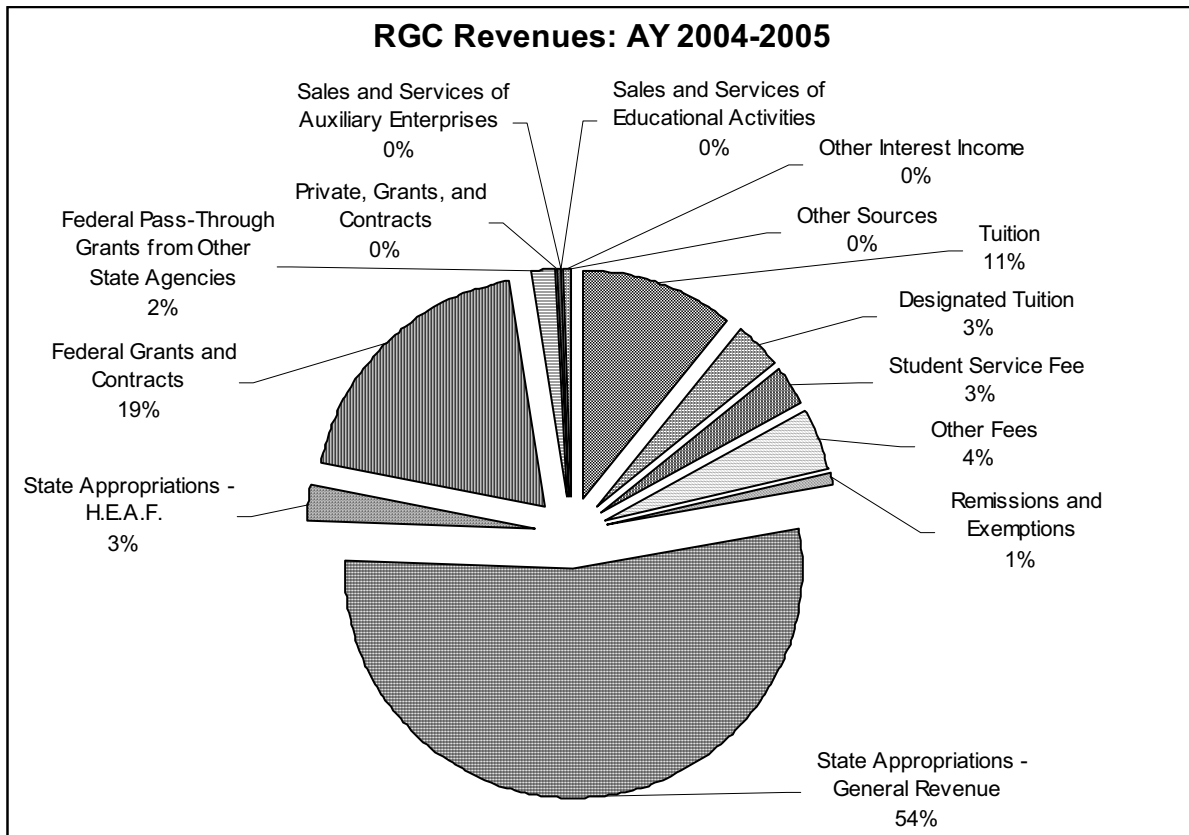
- ① Many students are awarded more than one type of aid and are counted more than once.
- ② Some students were counted twice – once as undergraduates and once as graduates after obtaining their baccalaureate and upon continued attendance.

Average award provided to undergraduates for the academic year: \$2,366.19
Average award provided to graduates for the academic year: \$2,976.51

Unduplicated financial aid recipients: 973

RGC revenues are provided in following table and chart.

Rio Grande College: 2004-2005 Revenues		
Tuition	\$1,072,272.20	10.71%
Designated Tuition	\$348,144.75	3.48%
Student Service Fee	\$285,228.75	2.85%
Other Fees	\$440,475.60	4.4%
Remissions and Exemptions	\$68,314.30	.68%
State Appropriations - General Revenue	\$5,356,443.00	53.5%
State Appropriations - H.E.A.F.	\$253,220.00	2.5%
Federal Grants and Contracts	\$1,940,722.49	19.4%
Federal Pass-Through Grants from Other State Agencies	\$159,473.62	1.6%
Private, Grants, and Contracts	\$36,410.92	.36%
Sales and Services of Educational Activities	\$6,550.42	.07%
Sales and Services of Auxiliary Enterprises	\$1,674.20	.02%
Other Interest Income	\$38,140.81	.38%
Other Sources	\$4,833.56	.048%
TOTAL, Current Funds Revenues	\$10,011,904.62	100%



RGC expenditures by function are provided in the following table and chart.

RGC Expenditures: 2004-2005		
Instruction	\$3,437,009.61	35.54%
Research	\$2,037.85	.021%
Public Service	\$292,379.60	3.02%
Academic Support	\$458,332.90	4.74%
Student Services	\$676,811.22	7%
Institutional Support	\$1,703,090.56	17.6%
Operation and Maintenance of Plant	\$949,682.87	9.82%
Scholarships and Fellowships	\$1,999,356.60	20.7%
Auxiliary Enterprises Expenditures	\$151,809.33	1.6%
TOTAL, Current Funds Expenditures	\$9,670,510.54	100%

