

# Sul Ross State University Rio Grande College



## FACT BOOK 2005 – 2006

Prepared by the Office of  
Institutional Research & Effectiveness



### Sul Ross State University Rio Grande College

205 Wildcat Drive  
Del Rio, Texas 78840  
(830) 768-4075

Rt. 3, Box 1200  
Eagle Pass, Texas 78852  
(830) 758-5004

400 Sul Ross Drive  
Uvalde, Texas 78801  
(830) 279-3001

RGC is accredited through the Commission on Colleges of the Southern Association of Colleges and Schools - 1866 Southern Lane, Decatur, Georgia 30333-4097, (404) 679-4501 – to award bachelors and masters degrees.

*No person shall be excluded from participation in, denied the benefits of, or be subject to discrimination under, any program or activity sponsored or conducted by Sul Ross State University on any basis prohibited by applicable law, including, but not limited to, race, color, national origin, religion, sex, age, or disability.*

# TABLE OF CONTENTS

Table of Contents .....	2
Preface .....	5
Acknowledgements .....	5
<b>I. Institutional Profile .....</b>	<b>6</b>
Sul Ross State University Rio Grande College .....	6
Rio Grande College History .....	7
Sul Ross State University Rio Grande College Statement .....	8
Office of Institutional Research & Effectiveness .....	10
Programs Offered .....	11
Articulation Agreement .....	12
Student Organizations .....	12
Rio Grande College Organizational Chart .....	13
Department of Education .....	25
Department of Liberal Arts .....	25
Department of Business .....	25
Department of Nursing .....	25
<b>II. Historical Trends .....</b>	<b>26</b>
Enrollment by Academic Year .....	26
Credit Hours by Academic Year .....	26
RGC Credit Hour History .....	27
Enrollment by Fall Semester .....	27
Enrollment by Spring Semester .....	28
Enrollment by Summer Semester .....	28
<b>III. Student Profile - Fall 2005 .....</b>	<b>29</b>
Age of Students Attending RGC .....	29
Enrollment by Sex .....	29
Enrollment by Ethnicity .....	30
Students by City of Residence .....	30
Students by County of Residence .....	31
Percent First Generation .....	31
Enrollment by Department .....	32
Enrollment by Program .....	32
Students Seeking Teacher Certification .....	33
Full-time & Part-time Enrollment .....	33
Enrollment by Classification .....	34
Students by College of Transfer .....	34
Aggregate Grade Distribution .....	35

Success Rate .....	35
Completion Rate .....	36

**IV. Student Profile – Spring 2006** ..... 37

Age of Students Attending RGC .....	37
Enrollment by Sex .....	37
Enrollment by Ethnicity .....	38
Students by City of Residence .....	38
Students by County of Residence .....	39
Percent First Generation .....	39
Enrollment by Department .....	40
Enrollment by Program .....	40
Students Seeking Teacher Certification .....	41
Full-time & Part-time Enrollment .....	41
Enrollment by Classification .....	42
Students by College of Transfer .....	42
Aggregate Grade Distribution .....	43
Success Rate .....	43
Completion Rate .....	44

**V. Student Profile – Summer I & II 2006** ..... 45

Age of Students Attending RGC .....	45
Enrollment by Sex .....	46
Enrollment by Ethnicity .....	47
Students by City of Residence .....	48
Students by County of Residence .....	49
Enrollment by Department .....	50
Enrollment by Program .....	51
Students Seeking Teacher Certification .....	52
Full-time & Part-time Enrollment .....	53
Enrollment by Classification .....	54
Students by College of Transfer .....	55
Aggregate Grade Distribution .....	56
Success Rate .....	57
Completion Rate .....	58
Degrees Awarded .....	59

**VII. RGC Personnel Profile** ..... 60

Personnel by Classification, Ethnicity and Sex .....	60
Personnel by Classification .....	60
Personnel by Ethnicity .....	61
Personnel by Sex .....	61
Faculty by Degree .....	62

Faculty by Years of Service .....	62
Faculty by Ethnicity & Sex .....	62
Faculty by Department .....	62
Section Staffing .....	63
Staffing: Full-time v Adjunct .....	63

**VII. Financial Profile** ..... 64

Tuition & Fees Schedule .....	64
Financial Aid Awarded .....	65
RGC Revenues Academic Year 2005-2006 .....	66
RGC Expenditures Academic Year 2005-2006 .....	66

**The Texas State University System Board of Regents**

Kent M. Adams, Chairman	Beaumont, Texas
Bernie C. Francis, Vice Chairman	Addison, Texas
Dora G. Alcalá	Del Rio, Texas
Ken Luce	Irving, Texas
Alan W. Dreeben	Schertz, Texas
Pollyanna A. Stephens	San Angelo, Texas
John E. Dudley	Comanche, Texas
Greg Wilkinson	Plano, Texas
Dionicio Flores	El Paso, Texas
Frank Bartley, Student Regent	San Marcos, Texas

**Chancellor**

Dr. Charles Matthews

## Preface

Sul Ross State University Rio Grande College has served the citizens of the Middle Rio Grande region for over three decades. During this period RGC has grown not only in enrollment but also, and importantly, as an agent of change and opportunity. As the only upper level institution within 150 miles, RGC plays a critical role in meeting the needs of its communities.

At our three major campus sites, RGC provides services to a region that approximates 19,000 square miles. Within the 19,000 square miles of RGC service area, the institution serves a population of approximately 279,937. RGC is a comprehensive upper level institution with an established partnership with Southwest Texas Junior College, more than 22 school districts within the region, as well as sister institutions in Mexico.

We are proud of our history. We stand ready to continue to meet the needs of the region and to prepare our students for a better tomorrow. RGC is an A++++ college; we are Accountable, we are Adaptable, we are Accessible, and we are Affordable. RGC, we are your future.

### **Acknowledgements**

Dr. Joel E. Vela, Vice President, Rio Grande College  
Dr. Frank Abbott, Dean, Rio Grande College  
Dr. Robert Overfelt, Chair, Liberal Arts Department  
Dr. Terry Carson, Chair, Business Administration Department  
Dr. Barbara Tyler, Chair, Education Department  
Dr. Miriam Muñiz, Title V, Director  
Claudia Wright, Director, Admissions and Records  
Emma Carrasco, Director of Business Services  
Ricardo Vásquez, Director, Public and Media Relations  
Mickey Corbett, Assistant Director, Financial Aid  
Randa Schell, Director, Student Services

Included in the Sul Ross State University Rio Grande College Fact Book are general statistics about the institution and its student population. The information provided comes from collection of data by the Office of Institutional Research and Effectiveness and the Texas Higher Education Coordinating Board reports.

# **I. INSTITUTIONAL PROFILE**

## **Sul Ross State University Rio Grande College**

**TYPE OF INSTITUTION:** Public, upper level with campuses in Eagle Pass, Del Rio, and Uvalde established in 1973 as a part of Sul Ross State University in Alpine, Texas. Rio Grande College offers junior, senior and graduate (Masters) level courses.

**ENROLLMENT:** The enrollment at Rio Grande College has steadily risen since its inception in 1973. In the Fall of 1991 the enrollment was 547 students. A decade later in the Fall of 2001 enrollment reached 810 students. By Fall of 2005 enrollment had increased to 1006.

**AGE:** RGC serves older, nontraditional students. Based on the Fall 2005 Semester the average age for first time new transfer students, inclusive of graduates and post-baccalaureate, was 27.69; for undergraduates the average age was 29.58, and for all students including graduates and post-baccalaureate the average age was 31.54.

**GENDER:** Females makeup nearly three-quarters of the student population at RGC (74.2 percent for Fall 2005).

**ETHNICITY:** Based on Fall 2005 enrollment 80.1% of the students were Hispanic, 14.3% were White, there was no data for 4.8%, and .08% made up the remaining.

**GRADUATES:** During the 2005-20056 Academic Year, Sul Ross State University Rio Grande College awarded 219 degrees (BA, BS, BBA, M.Ed., and MBA)

**FULL & PART-TIME:** The Fall 2005 figures reflected 29% of students attending RGC attended on a full-time basis and 71 % attended on a part-time basis.

**TYPE OF STUDENTS:** Based on the Fall 2005 semester, 76.7% of RGC students indicated being first generation; the largest segment of the student population was seniors (38%); 63.5% indicate entering RGC with a degree already earned – minimum AA, and maximum masters; 25.5% of RGC students indicate being married; 32% indicate being employed, and 31.6% indicated gross income less than \$20,000.

**TRENDS:** As more programs are added to those already offered, and bi-national educational agreements are established with Mexican institutions of higher learning in Piedras Negras and Acuña, it is anticipated that RGC's enrollment of U. S. and international students will increase at a slightly higher rate than in previous years.

**SERVICE AREA:** Rio Grande College serves the thirteen counties of Atascosa, Bandera, Dimmit, Edwards, Frio, Kinney, La Salle, Maverick, Medina, Real, Uvalde, Val Verde and Zavala.

# **The Rio Grande College History**

## **Del Rio, Eagle Pass, and Uvalde**

The Rio Grande College of Sul Ross State University, with sites at Del Rio, Eagle Pass, and Uvalde, serves thirteen counties in Southwest Texas. Sometimes referred to as the Southwest Texas Badlands, this area is known for its fields of purple sage and its Old West ambiance. In this atmosphere, the College works continually towards higher standards of excellence in teaching and learning. The Rio Grande College offers junior, senior, and graduate coursework with programs in Liberal Arts, Business, and Teacher Education. Some courses are also offered on the Laughlin Air Force Base near Del Rio.

Begun originally as the Sul Ross State University Study Center, the College was renamed the Uvalde Study Center in 1985, and again the Uvalde Center in 1989. Recognizing its service to the broad area of the Middle Rio Grande and Wintergarden regions of Texas, the Legislature renamed it Sul Ross State University Rio Grande College in 1995. Sul Ross and the southwest are closely tied. The blending of the Hispanic and Anglo heritages makes Sul Ross perfect for anyone who seeks intellectual development with emphasis on the mutual culture that all Americans share.

The student body consists of multi-cultural, traditional, and non-traditional students. Campus activities and opportunities are designed for everyone. Activities include a calendar of programming events, publication of students' creative writing, a student newspaper, a yearbook, and five student organizations: the International Reading Association, the National Council for Teachers of English, a service learning club, a business club, and an editor's club. Additionally, the College students participate in an annual leadership retreat. The Education Department sponsors the annual "Issues in Education" lectures; the Liberal Arts Department sponsors trips to cultural activities such as the San Antonio Ballet and Shakespeare in the Park; and the Business Administration Department offers public lectures with noted experts on business topics. Additionally, tutoring sessions are available in all areas for anyone who would like extra help with his or her studies. Overall, Sul Ross offers a stimulating academic environment with an emphasis on the student.

## **The College Sites**

### **Del Rio**

Del Rio, Texas, sister city of Ciudad Acuña, Mexico, combines the ambiance of Mexico with American culture to form a diversified city. Nearby, the Pecos River joins the Devil's River and the Rio Grande to create Lake Amistad, the ninth largest of its kind in the United States with more than 850 miles of shoreline. Its canyons, cliffs, and caves provide both scenery and a place filled with history. Del Rio is the home of the Whitehead Memorial Museum with its log cabin, cultural folk art exhibit, and numerous other historical displays. A visit to Whitehead is like taking a stroll through history. Judge Roy Bean, "The Law West of the Pecos," is buried here. West of Del Rio is Seminole Canyon State Historical Park where 10,000-year-old pictographs adorn the canyon walls. Del Rio provides a perfect place for learning about life (and education) on the border, and Sul Ross State University Rio Grande College is proud to serve this region.

### **Eagle Pass**

Eagle Pass, located on the border across from Piedras Negras, Mexico, is the center of a thriving international trade community. First established as a camp in 1849, Eagle Pass has grown into a city of over 25,000 people. With a variety of shops and malls, it is the gateway to Piedras Negras' colorful outdoor markets and handiwork of the Mexican tradition. Biculturalism flourishes in Eagle Pass, and it is common for people in Eagle Pass to speak both Spanish and English. In this atmosphere, Sul Ross State University Rio Grande College strives to bring together diverse cultures.

### **Uvalde**

Uvalde is a relatively old township in Southwest Texas. Settled in 1853, it served as a trading post for area settlers and forts along the Nueces River. Prior to Texas' annexation, many battles were fought along the Nueces River in an attempt to settle the boundary dispute between Texas and Mexico. Turn of the century architecture is still evident in Uvalde. Nestled along tree shaded streets are many elegant old homes, dating back to the late 1890s and early 1900s. Many storied houses with long porches, balconies, and tall graceful columns preserve a testament to the past. The huge old oaks that were so numerous in the area are so loved by the city that many streets are built around the trees.

## **Sul Ross State University Rio Grande College Mission**

The ultimate goal of higher education is to produce graduates who will be effective leaders in their chosen profession, valued members of their communities, and responsible citizens of the world.

As a coeducational, comprehensive, public institution or higher education offering certificate programs and associate, baccalaureate, and master's degree programs, the mission of Sul Ross State University and Sul Ross State University Rio Grande College is to include the following structure in all of its academic programs:

From the core curriculum, students will acquire a common set of intellectual, physical, and aesthetic experiences designed to foster a broad appreciation for the human experience. Graduates will be expected to demonstrate the critical thinking skills, oral and written communication skills, and quantitative literacy that will be required for them to become effective leaders. Moreover, graduates will possess the in-depth knowledge necessary to either enter professions that are related to their areas of specialization, to achieve advanced levels of professional development, or to enter and successfully complete graduate programs of study.

As part of their education, students will develop qualities of good citizenship, including an appreciation for and commitment to performing their work conscientiously; learning to recognize, respect and understand cultural diversity; and learning to recognize the implication so what they believe. Most importantly, they will acquire the skills and techniques which enable them to engage in self-learning, and spirit of intellectual curiosity leading to independent and purposeful life-long learning.

In order to guarantee that this mission is carried out in the spirit of the goals of higher education, Sul Ross State University has three major functions:



**To enable optimal teaching and learning** through quality faculty and staff, exceptional facilities, technology, and instructional resources, and effective student support services.

**To support research** which advances knowledge, enriches teaching, encourages professional development, and utilizes the distinctive environment of the Big Bend and Middle Rio Grande areas of Texas;

**To serve as a resource for enrichment** of the cultural, intellectual, social and economic life of the citizens of the region.

## **Office of Institutional Research & Effectiveness**

**Mission:** To assist in the furtherance of the goals of Sul Ross State University Rio Grande College by working with other offices, faculty, and staff in collection of internal data and external; to assist with academic research; to assist with submission of reports and grants, and to assist with evaluation and assessment of programs ensuring effectiveness of all facets of the university's services.

### **Goals:**

1. Assist internal and external offices and personnel by providing support to colleagues and outside stakeholders that will assist them in completion of their work.
2. Assist faculty and outside stakeholders involved in academic research.
3. Work with faculty, staff and other university offices to enhance the quality and effectiveness of the services provided by the institution.
4. Prepare data and offer assistance to internal and external stakeholders to ensure their success, and the success of the university.
5. Collect, maintain, evaluate, assess and use institutional data to create effective plans to reach well thought-out objectives.
6. Contribute to the institution-wide effort to provide the type of programs and services that will present the university in a positive light.
7. Prepare and distribute educational and demographic data for each semester to faculty and university offices.

# Programs Offered

## Provisional Teacher Certification

- Bilingual Generalist EC-4
- Bilingual Generalist 4-8
- English Language Arts & Reading 4-8
- English Language Arts & Reading 8-12
- Generalist EC-4
- Generalist 4-8
- History 8-12
- Mathematics 4-8
- Mathematics 8-12
- Social Studies 4-8
- Social Studies 8-12
- Spanish 6-12

## Bachelors Programs

Currently, Rio Grande College offers the Bachelor of Arts in:

- English
- Psychology
- Spanish
- History
- Social Science
- Interdisciplinary Studies

Bachelor of Science in:

- Biology
- Mathematics
- Criminal Justice
- Interdisciplinary Studies

Bachelor of Business Administration in:

- General Business
- Management Information Systems
- International Trade with Mexico

Students may earn teacher certification at the elementary level in Interdisciplinary Studies with areas of specialization in Bilingual Education, Language Arts, History, Mathematics, Social Studies, Spanish, or as a Generalist. At the secondary level teacher certification may be obtained in the areas of English, History, Mathematics, Social Sciences, or Spanish. All undergraduate degrees have been fully articulated with Southwest Texas Junior College. For degree requirements, see the University Catalog.

In addition to obtaining teacher certification in the areas noted above, a student may obtain a Bilingual teaching endorsement.

## Masters Programs - Education

- Masters of Education with Major in Counseling
- Masters of Education with Major in General Education
- Masters of Education with Major in Instructional Leadership
- Masters of Education with Major in School Administration
- Masters of Education with Major in Reading Specialist

Students may obtain a general Master's Degree in Education. Other master's programs lead to professional certification in guidance and counseling, reading specialist, supervision, bilingual education, special education, as an educational diagnostician, in mid-management and professional superintendent.

## Masters Programs – Business Administration

➤ Masters of Business Administration – General Business

## Articulation Agreements

Sul Ross State University Rio Grande College has an articulation agreement with Southwest Texas Junior College (SWTJC). The agreement guarantees that students who follow the plan can transfer their first two years of college work with SWTJC to RGC. The articulation agreement encompasses all undergraduate majors.

RGC accepts credit from other institutions accredited by regional accreditation authorities. As a fully accredited institution other institutions of higher learning accept the coursework provided by RGC.

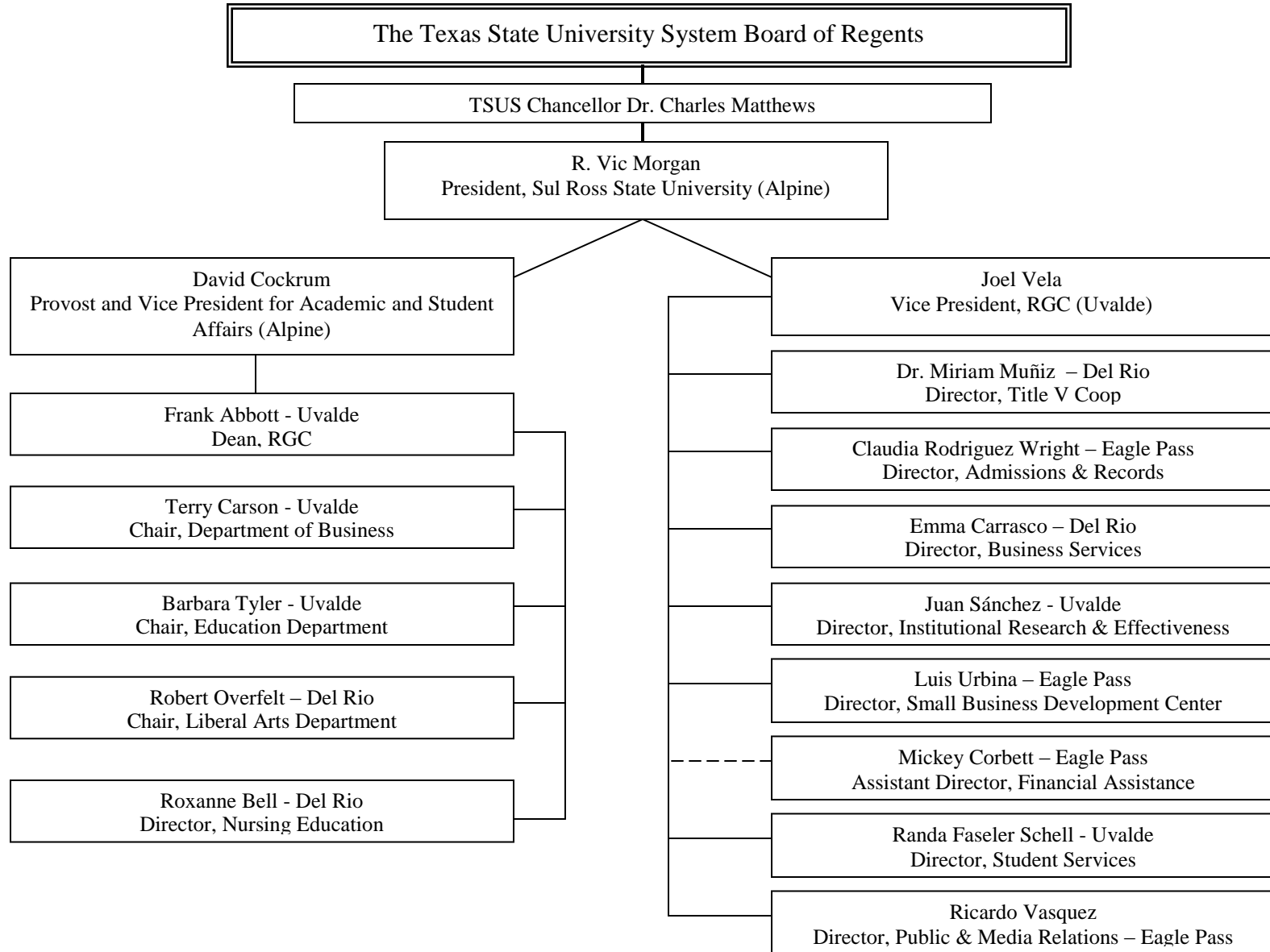
## Student Organizations

Students are provided opportunities to join various clubs as a means of enhancing their interpersonal skills, interacting with other students, interacting with the administration, and, working towards the betterment of the institution.

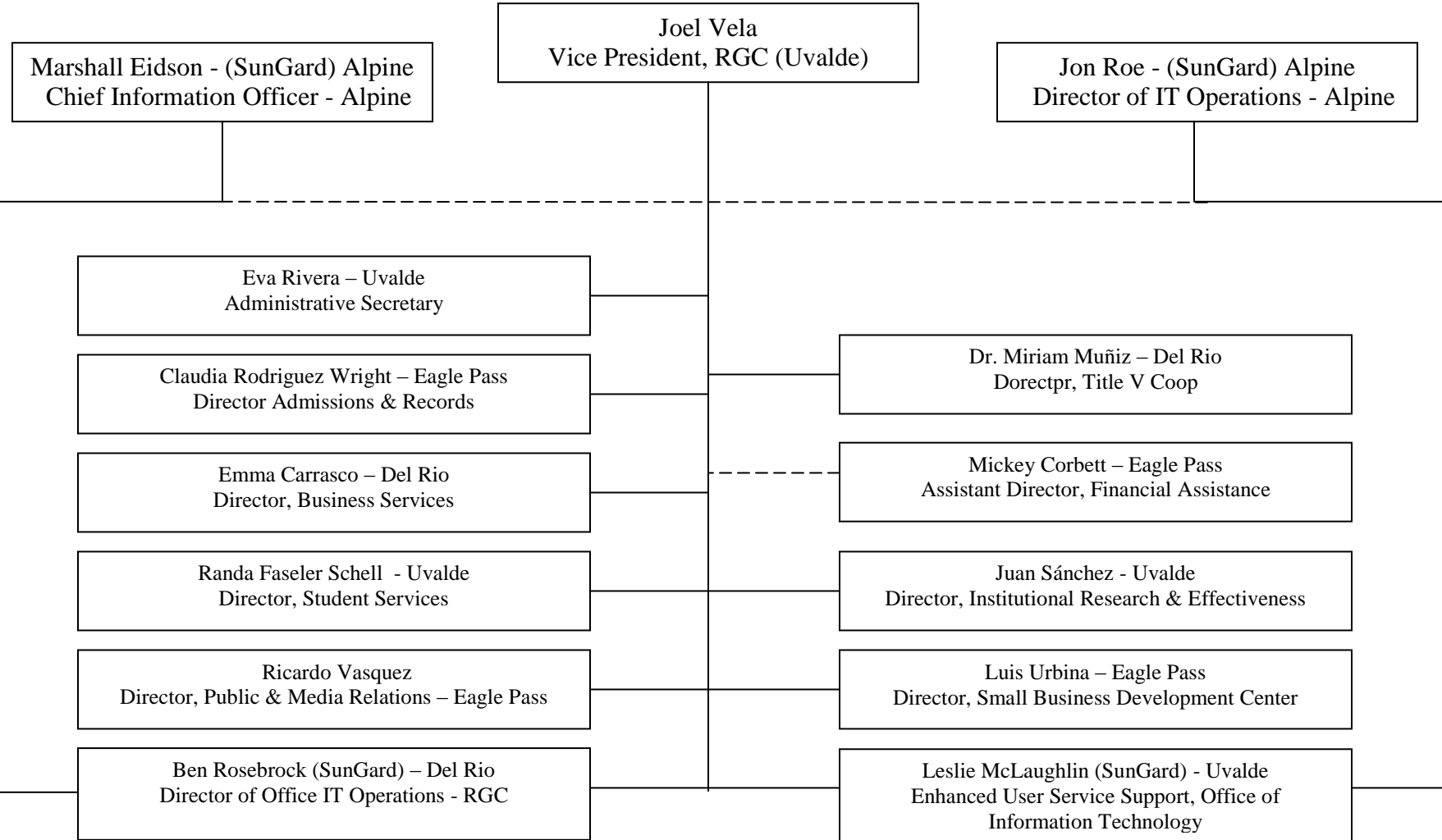
The following are the student organizations that have been established at RGC.

Criminal Justice Organization  
Folklore Club  
Future Educators Club  
Shakespeare Club  
Psychology Service Learning Club  
Writers' Club  
Society of Biologist  
Club Wattsell

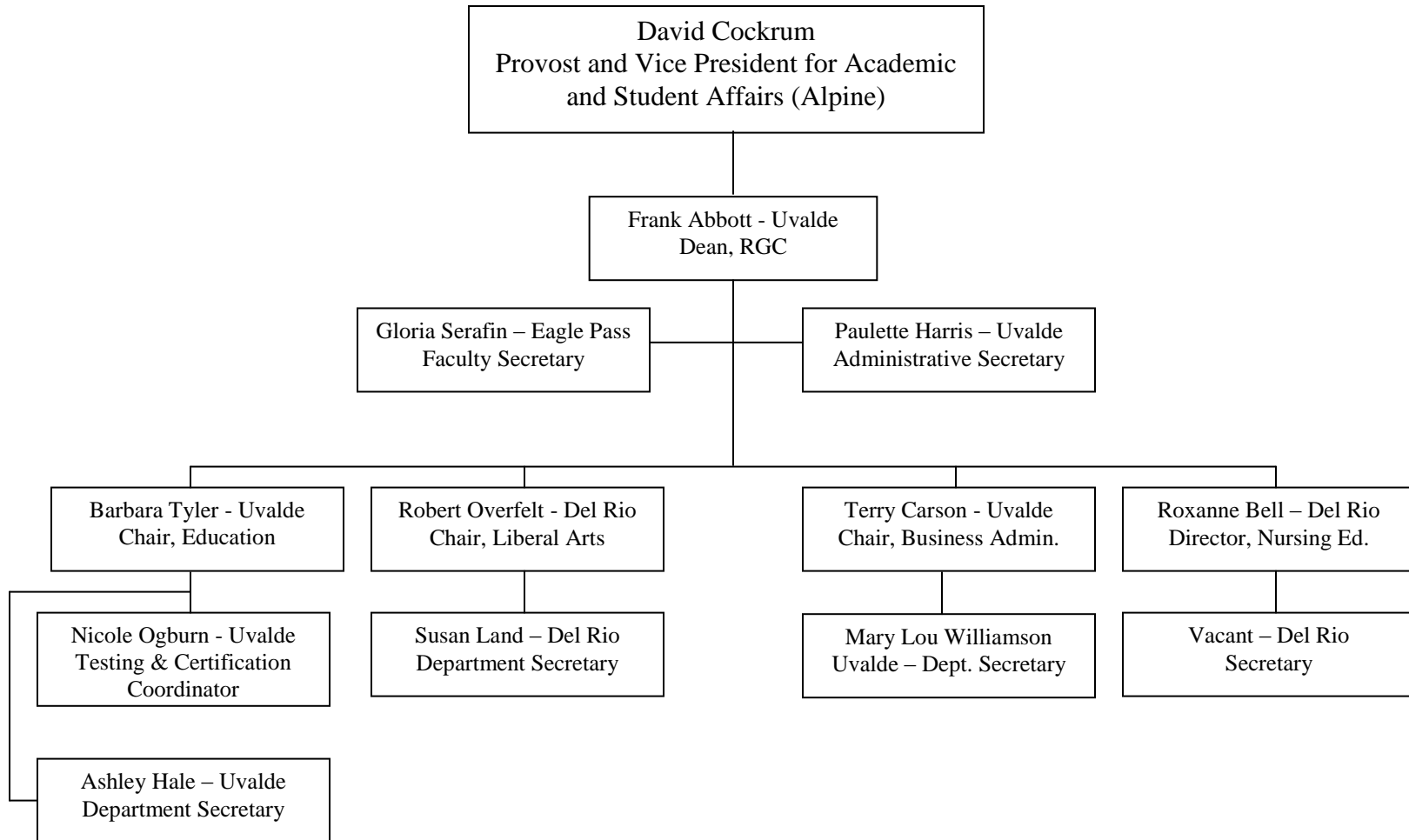
# Rio Grande College



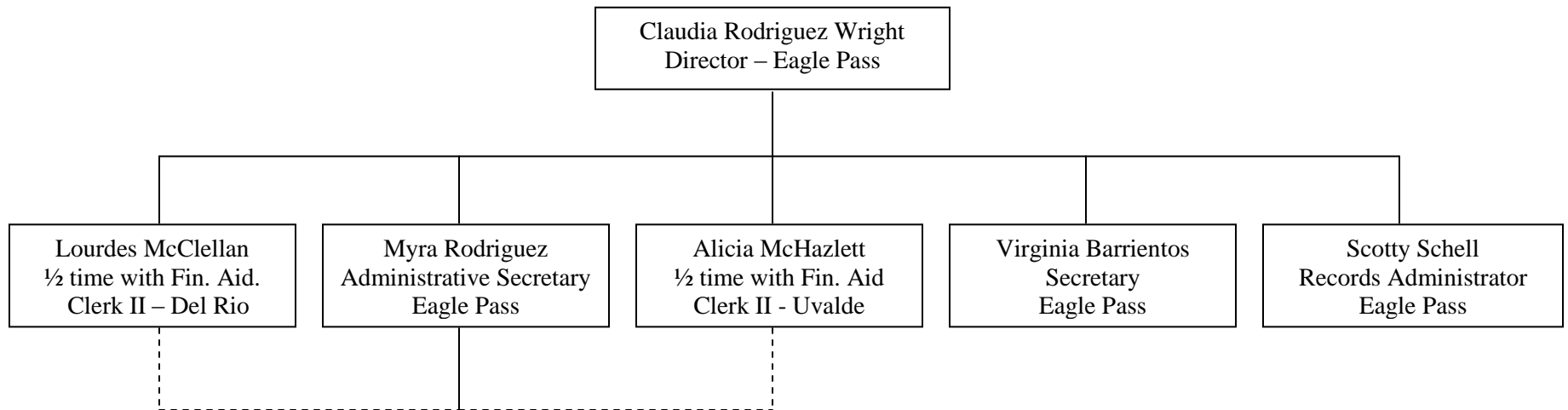
# Office of the Vice President



# Academic Affairs

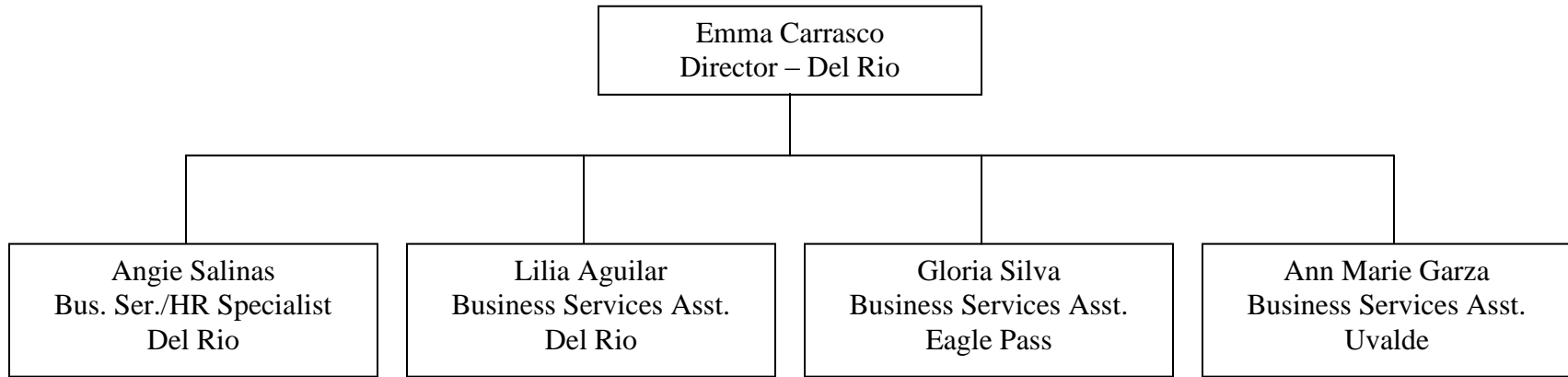


# Admissions & Records

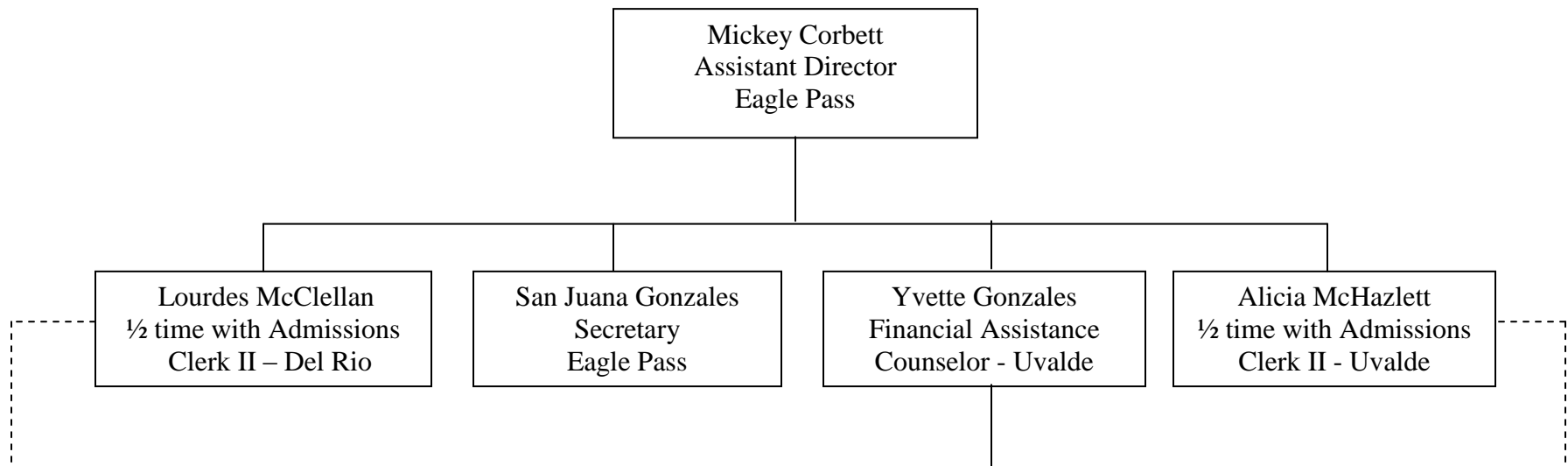




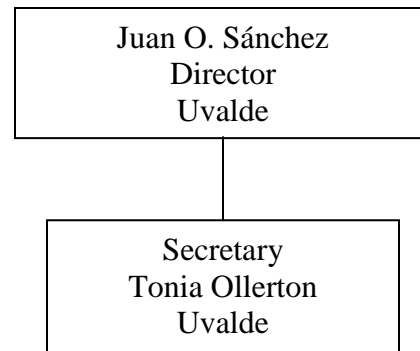
# Business Services



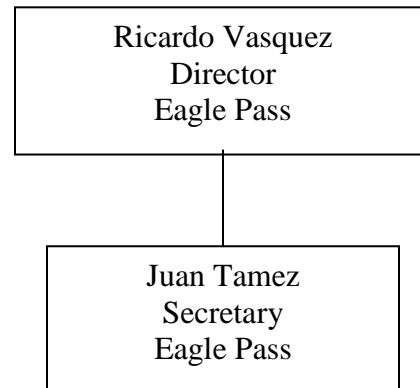
# Financial Assistance



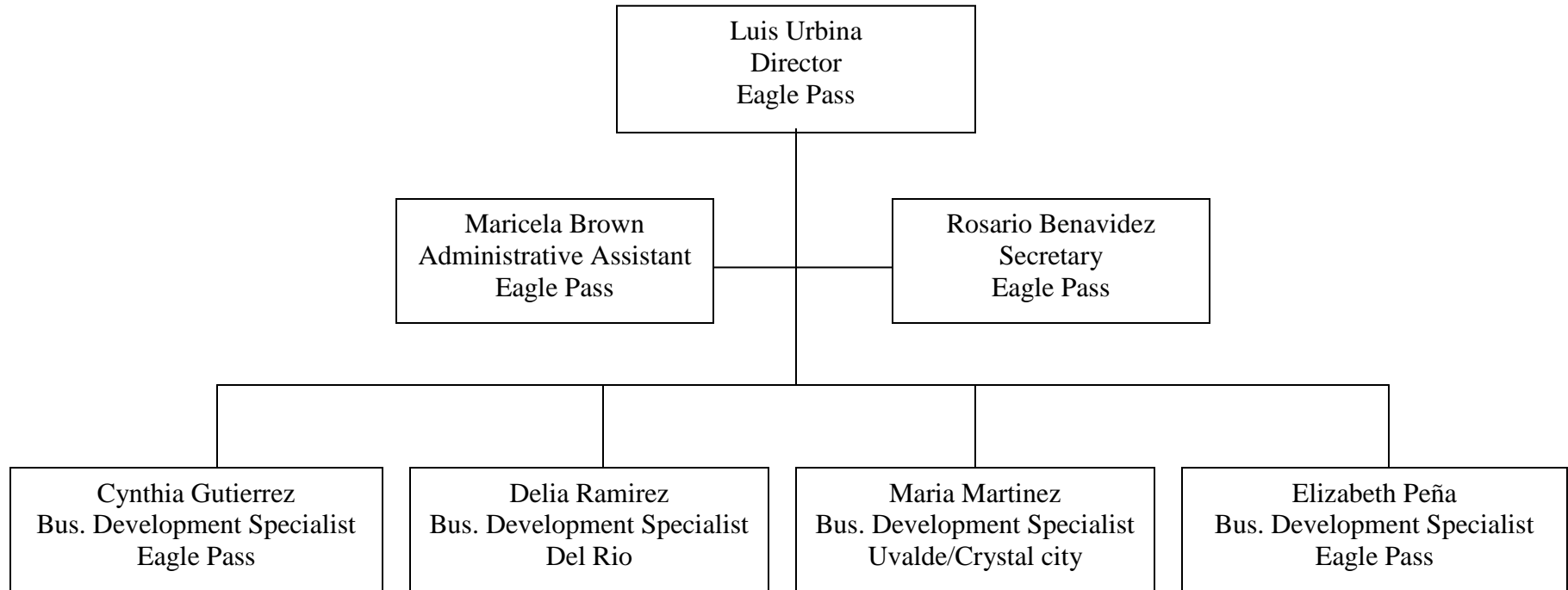
# Institutional Research & Effectiveness



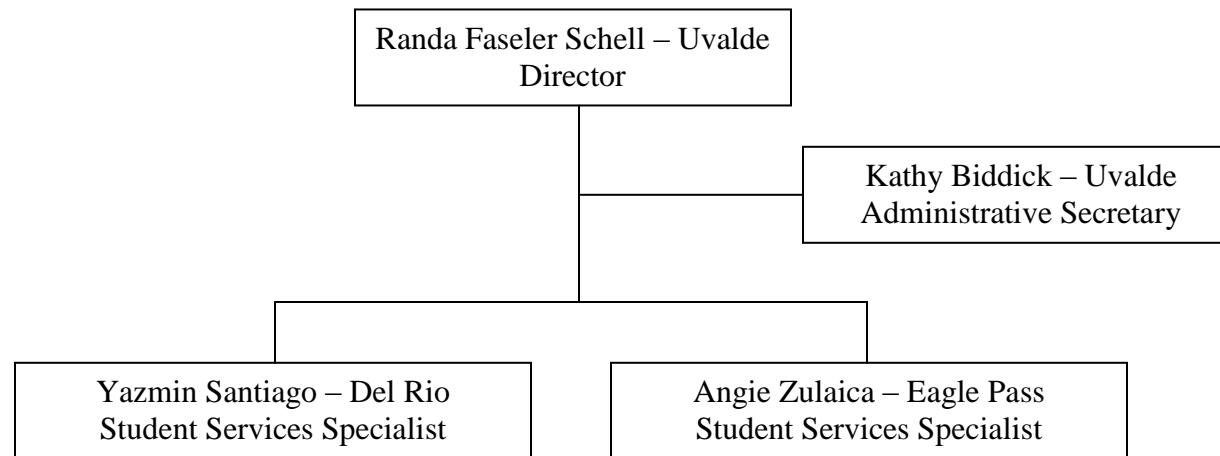
# Public & Media Relations



# Small Business Development Center

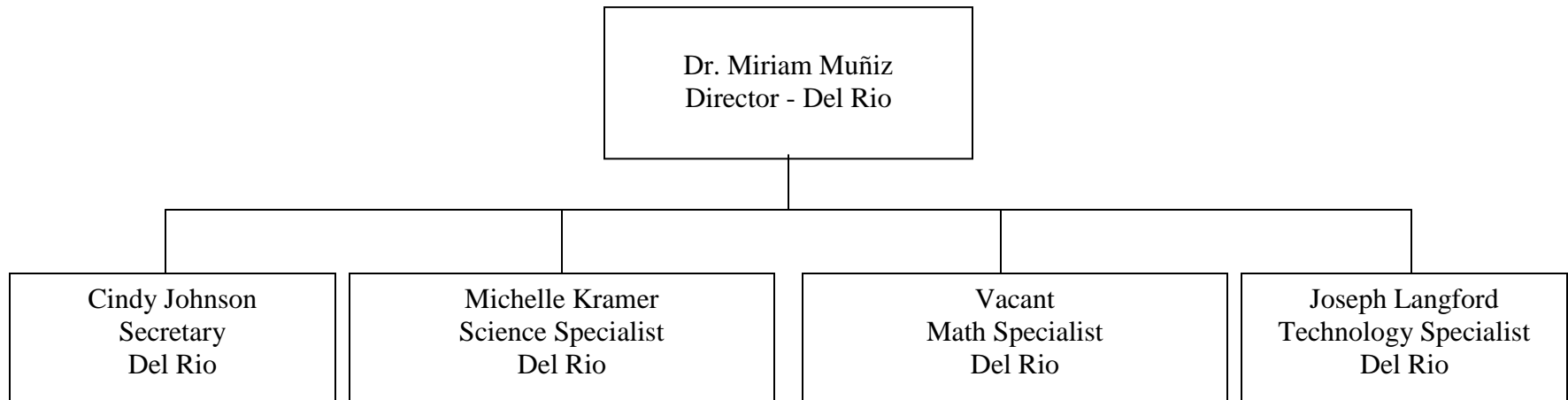


# Student Services

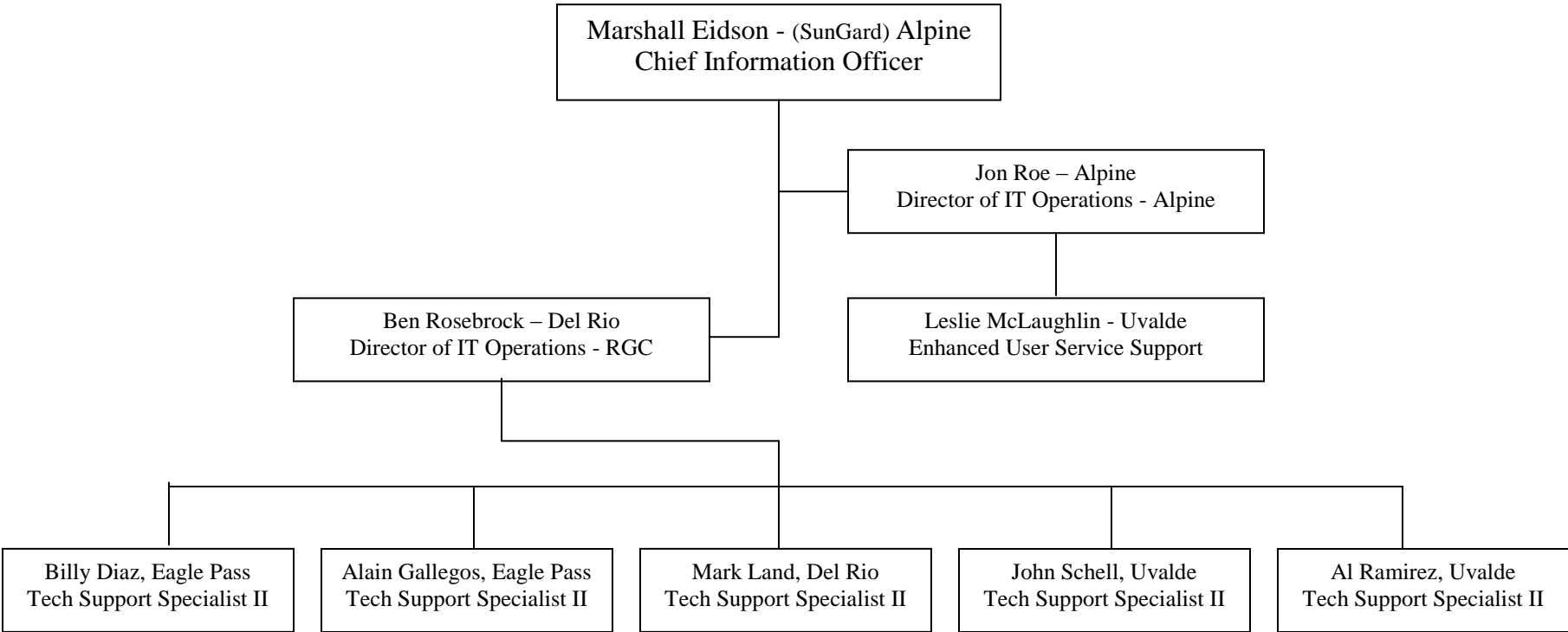


# Title V Co-op Grant

(With SWTJC)



# Office of Information Technology





## **DEPARTMENT OF EDUCATION**

Professor and Chair: Barbara Tyler, Ph.D.  
Professor William Tindol, Ed.D.  
Professor Timothy Wilson, Ed.D.  
Professor James Wood, Ed.D.  
Associate Professor Todd Russell, Ph.D.  
Associate Professor Michael Cass, Ed.D.  
Associate Professor Shirley Watts, Ph.D.  
Associate Professor Miriam Muñiz, Ph.D.  
Assistant Professor Fernando Quiz, Ph.D.  
Assistant Professor Clay Baulch, Ph.D.  
Assistant Professor Monica Gutierrez, Ph.D.  
Assistant Professor Pauline Lewis, Ph.D.  
Lecturer Gina Stocks, M.Ed.

## **DEPARTMENT OF LIBERAL ARTS**

Professor and Chair: Robert Overfelt, Jr., Ph.D.  
Professor and Dean: Frank W. Abbott, Ph.D.  
Professor Gregory B. Stone, Ph.D.  
Associate Professor Ferris Byxbe, Ph.D.  
Associate Professor Jorge Hernández, Ph.D.  
Associate Professor Francine Richter, Ph.D.  
Associate Professor Sarah Moreman, Ph.D.  
Assistant Professor Donald Walden, Ph.D.  
Assistant Professor Wesley Wynne, Ph.D.  
Assistant Professor Patricia Nicosia, Ph.D.  
Assistant Professor Daniel H. Foley III., Ph.D.  
Assistant Professor Mark Emerson, Ph.D.

## **DEPARTMENT OF BUSINESS ADMINISTRATION (Including Economics)**

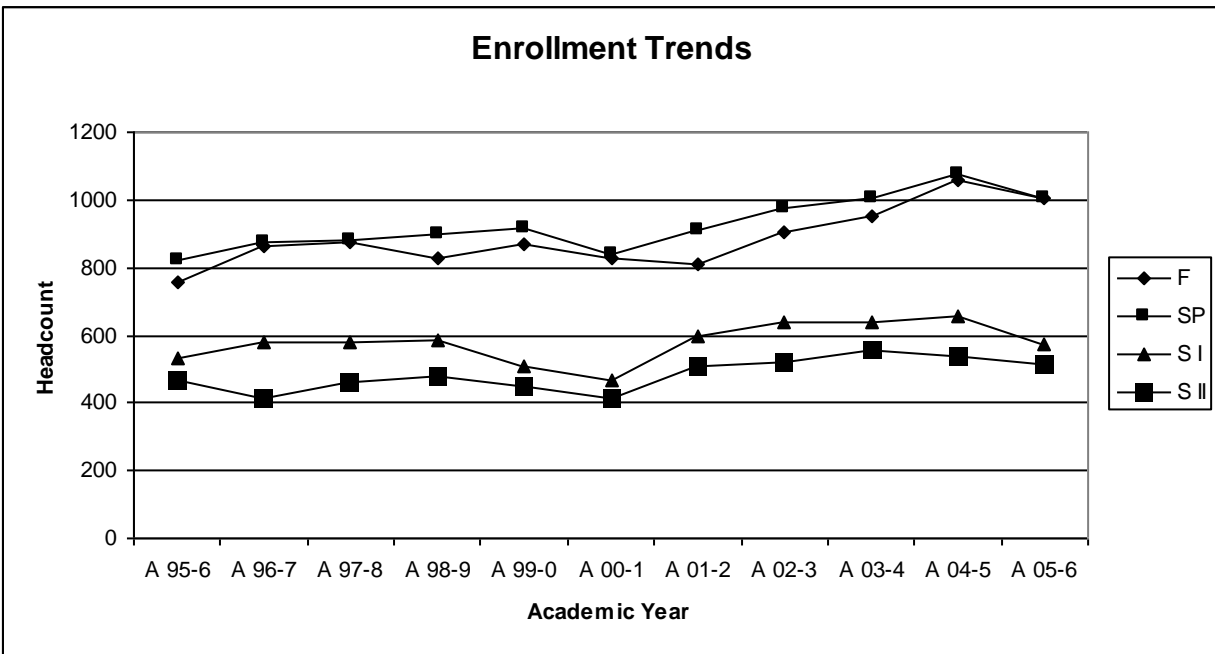
Professor and Chair: Terry Carson, D.B.A.  
Professor Randal Stitts, Ph.D.  
Professor Roman Sliwa, Ph.D.  
Professor Hoi-Tay Wong, Ph.D.  
Assistant Professor Efraín Adames, M.P.A.

## **DEPARTMENT OF NURSING EDUCATION**

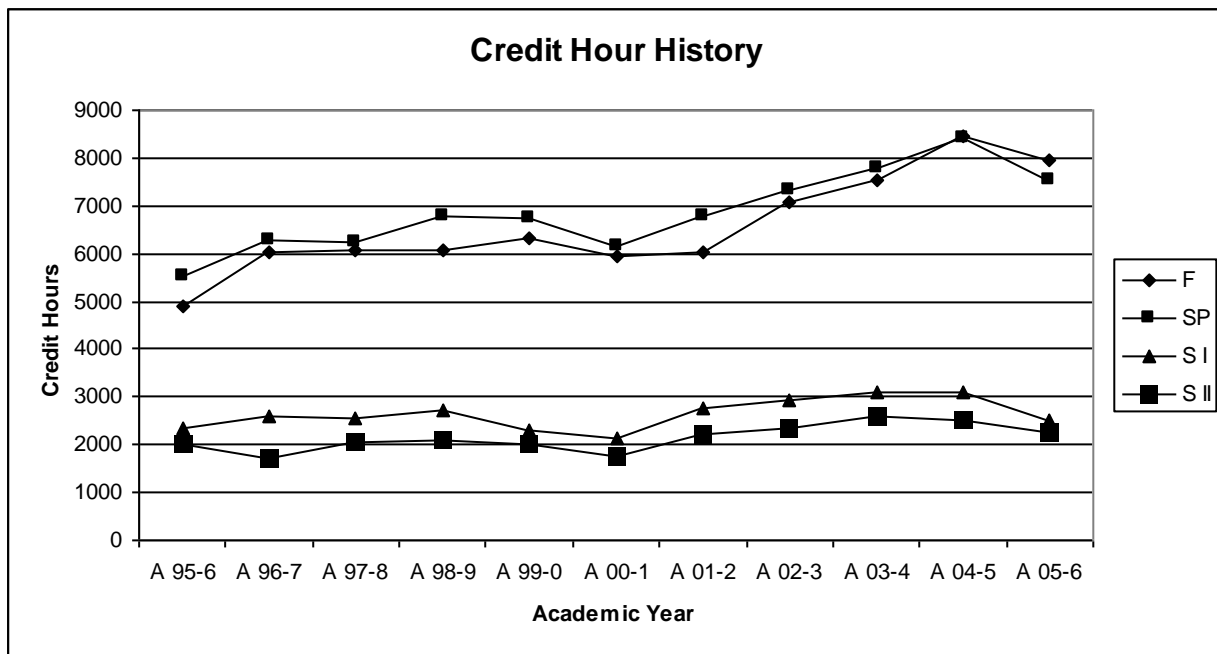
Associate Professor Roxanne Bell, Ph.D., Director

## II. HISTORICAL TRENDS

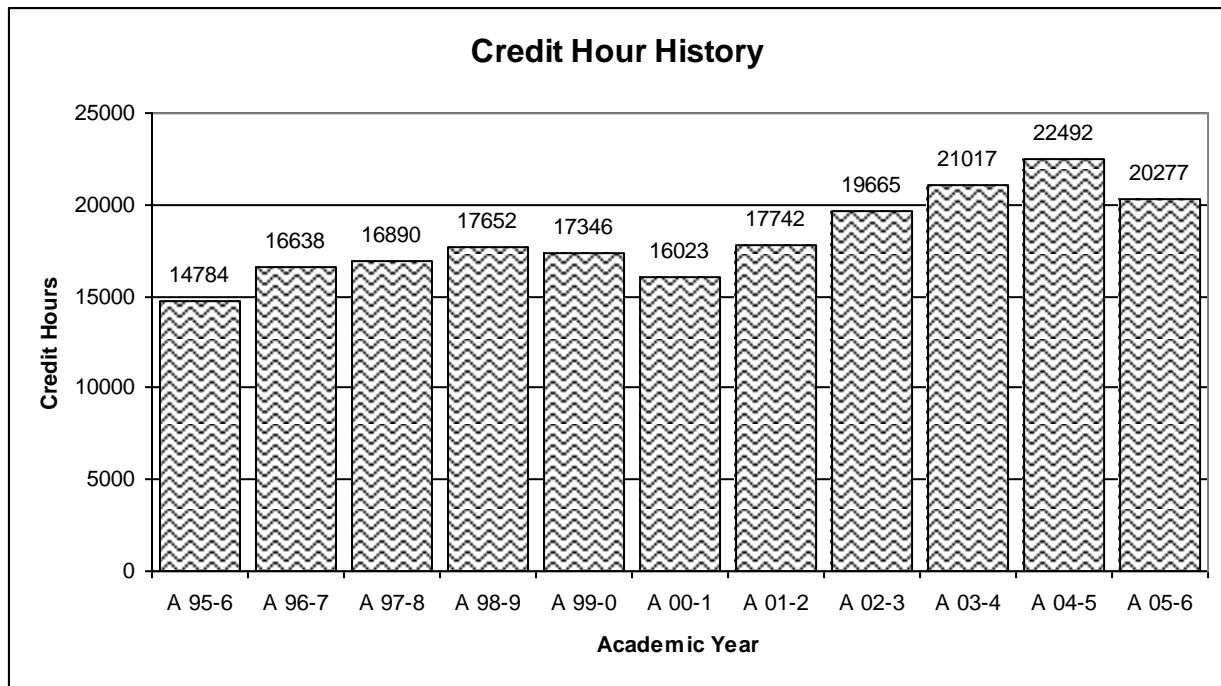
Enrollment by academic year: (95-96 to 05-06).



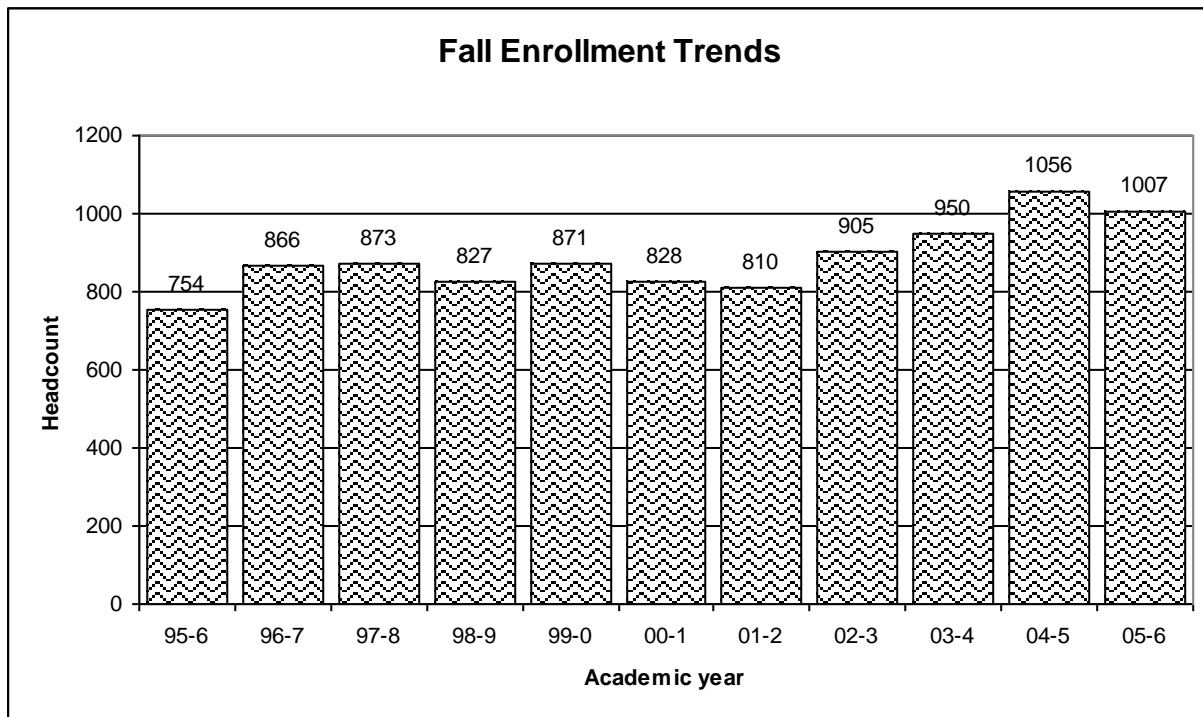
Credit hours by academic year: (95-96 to 05-06).



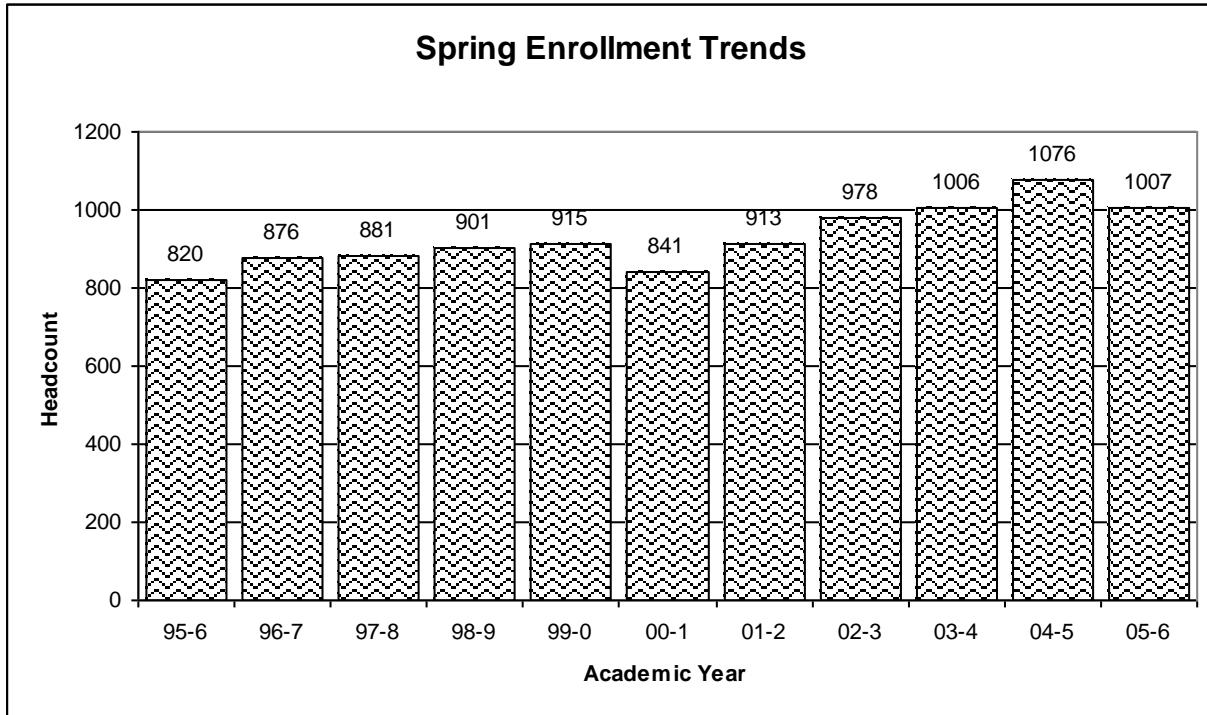
Credit hour history by academic year: (95-96 to 05-06).



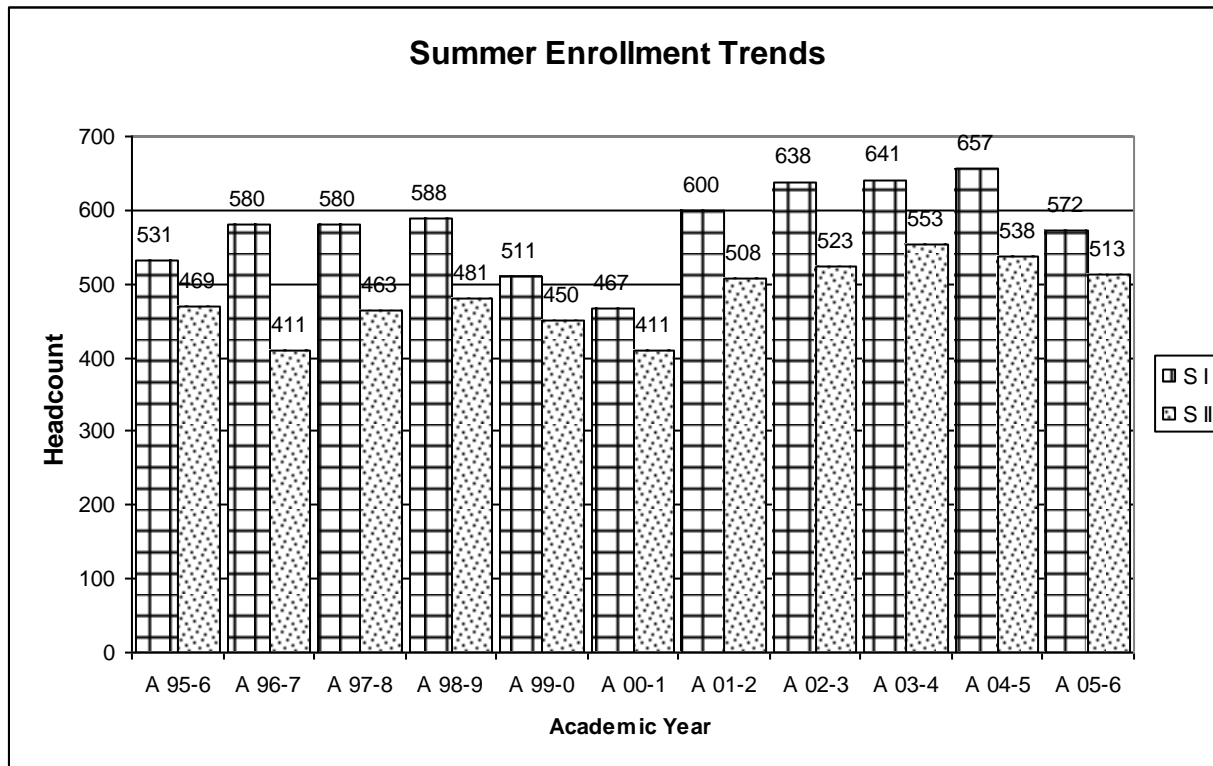
Historical enrollment trends by fall semester (95-96 to 05-06).



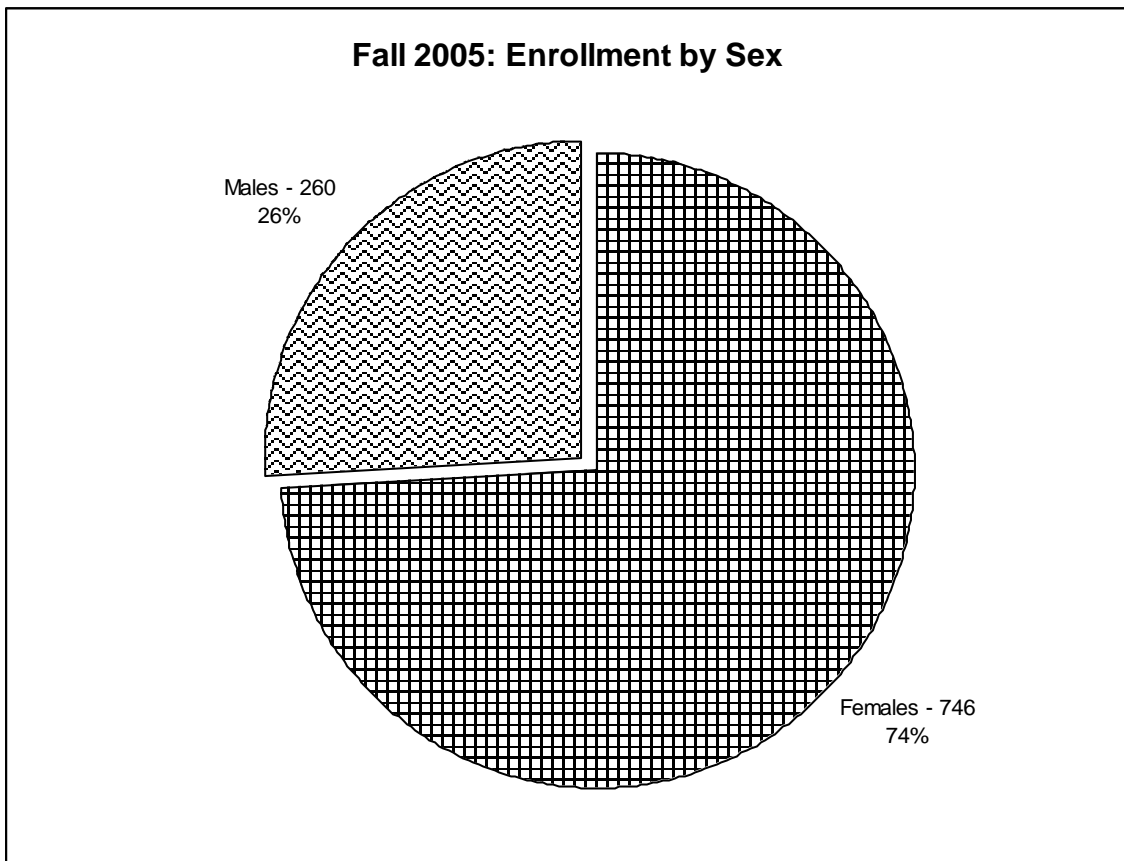
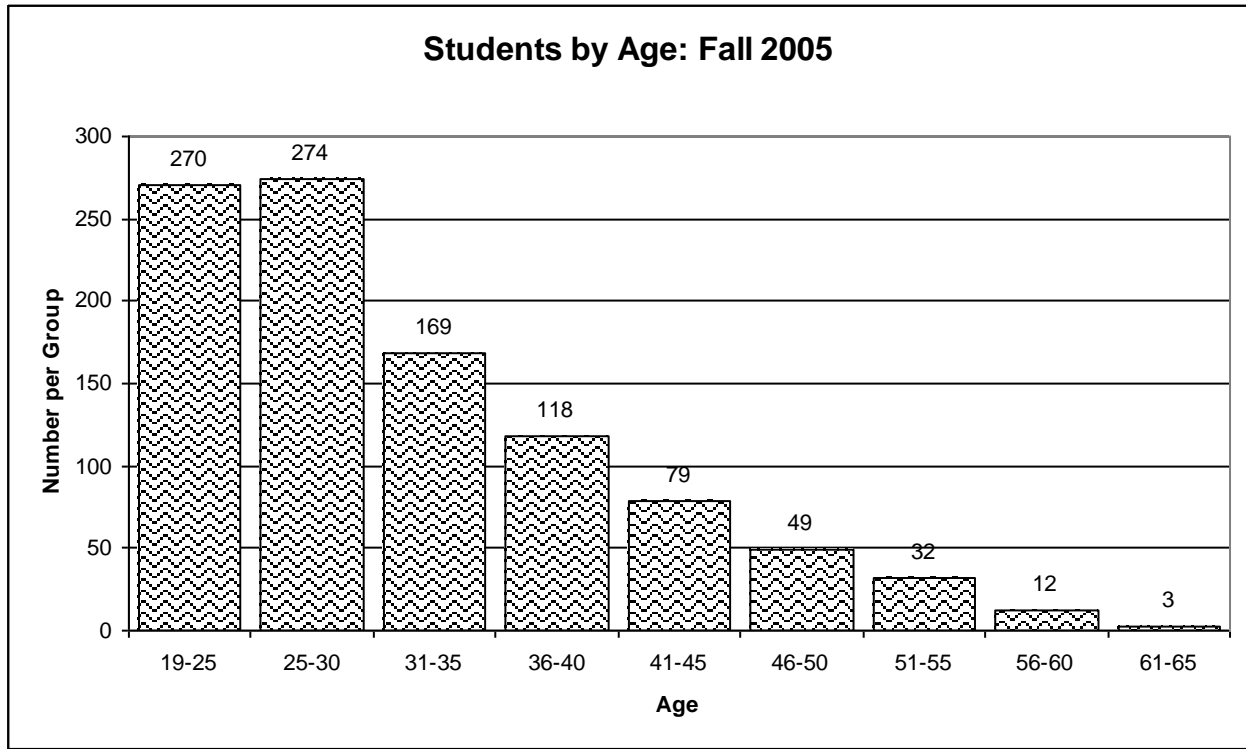
Historical enrollment trends by spring semester: (95-96 to 05-06).

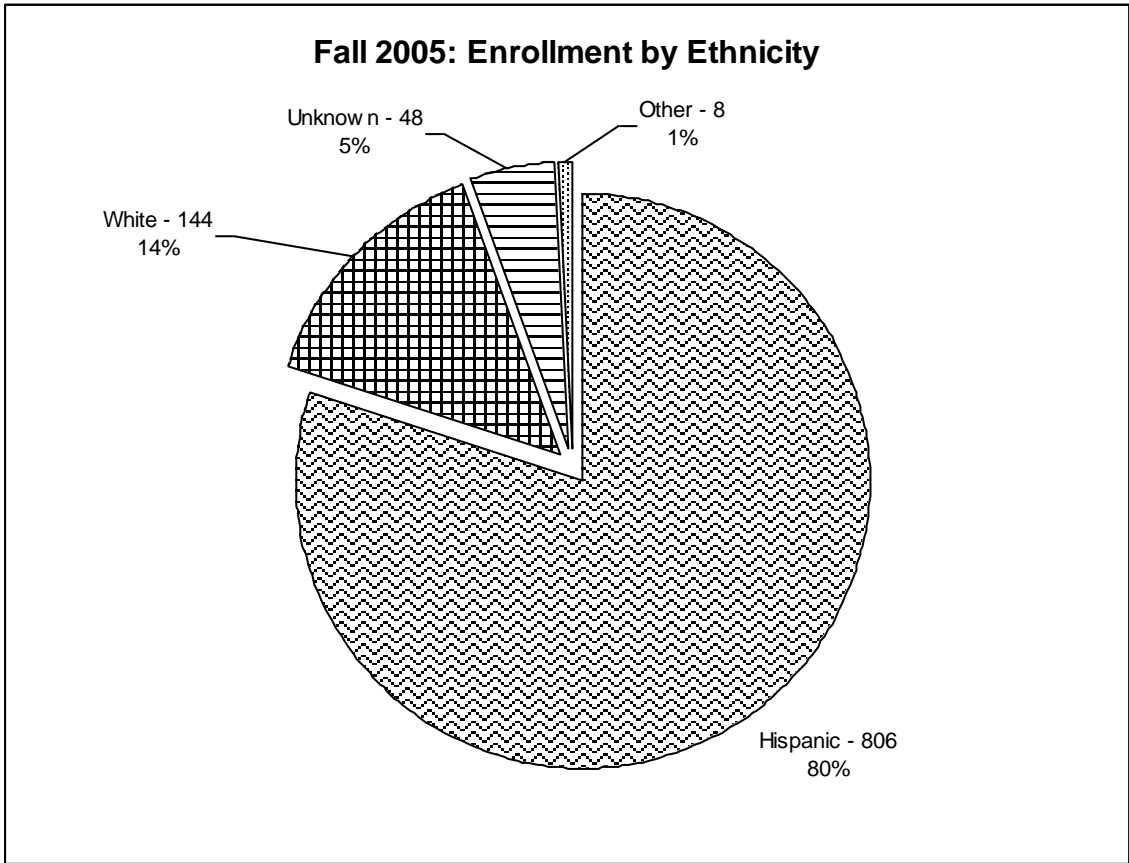


Historical enrollment trends by summer semester: (95-96 to 05-06).

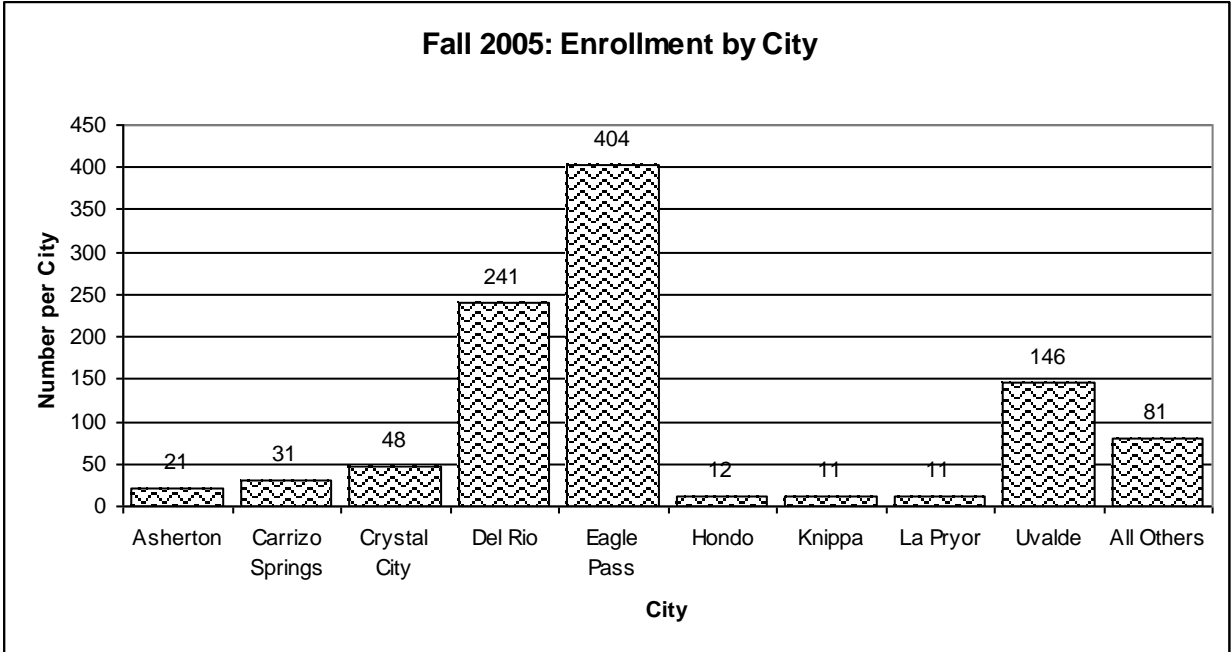


### III. STUDENT PROFILE, FALL 2005

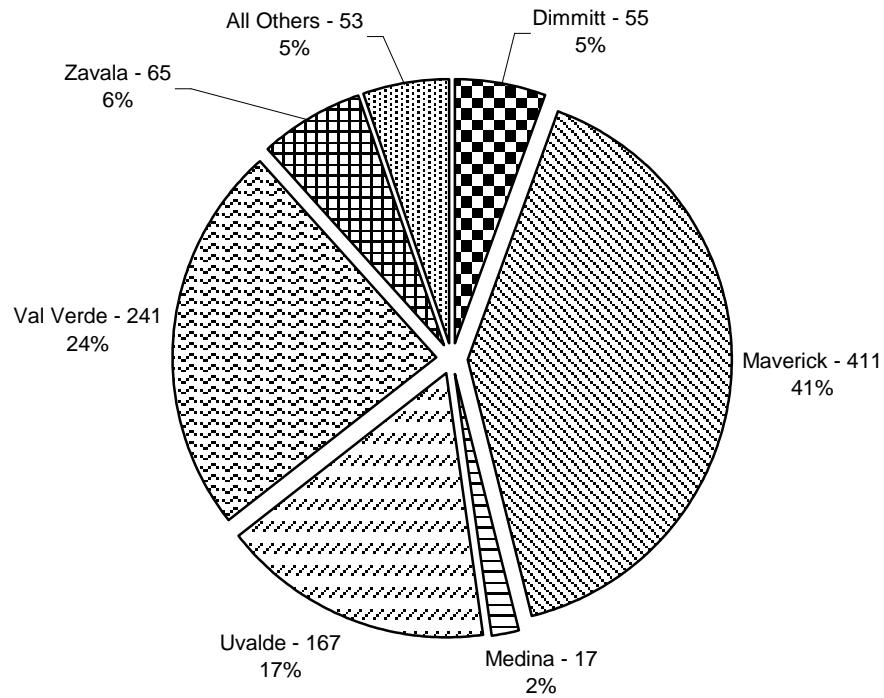




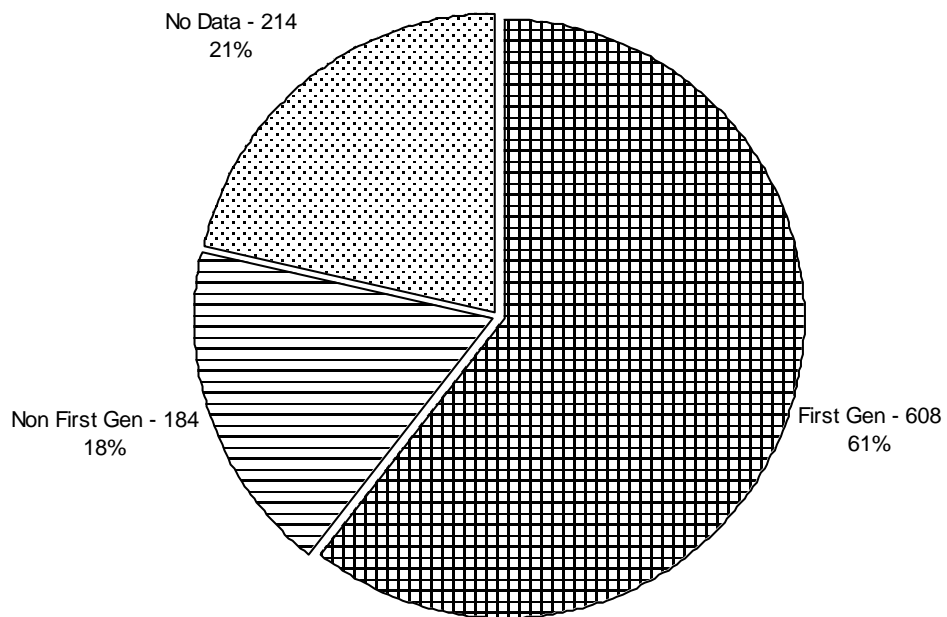
“Other” includes Black, Asian, Pacific Islander and Native American



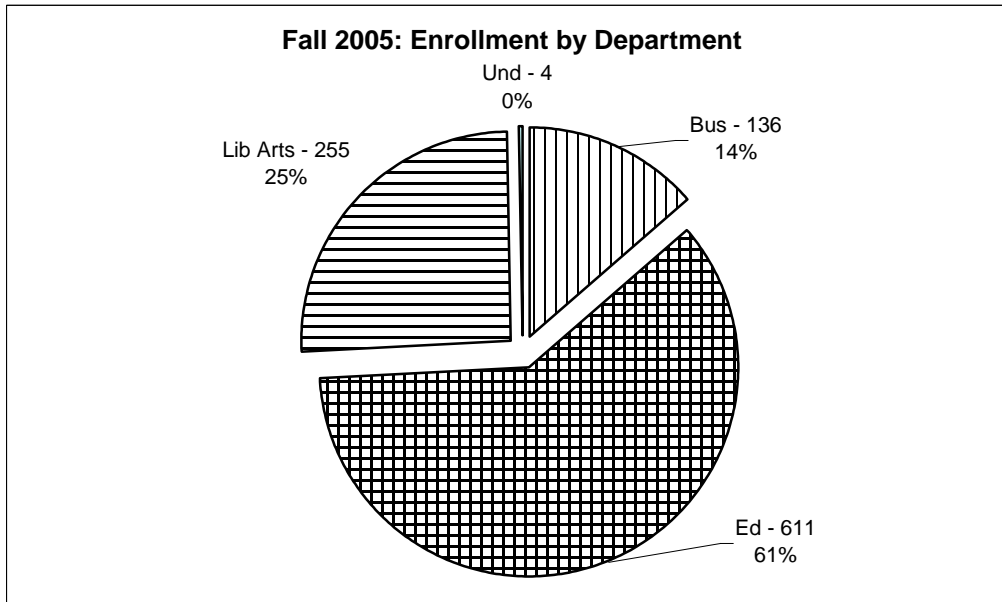
### Fall 2005: Enrollment by County



### Fall 2005: First Generation



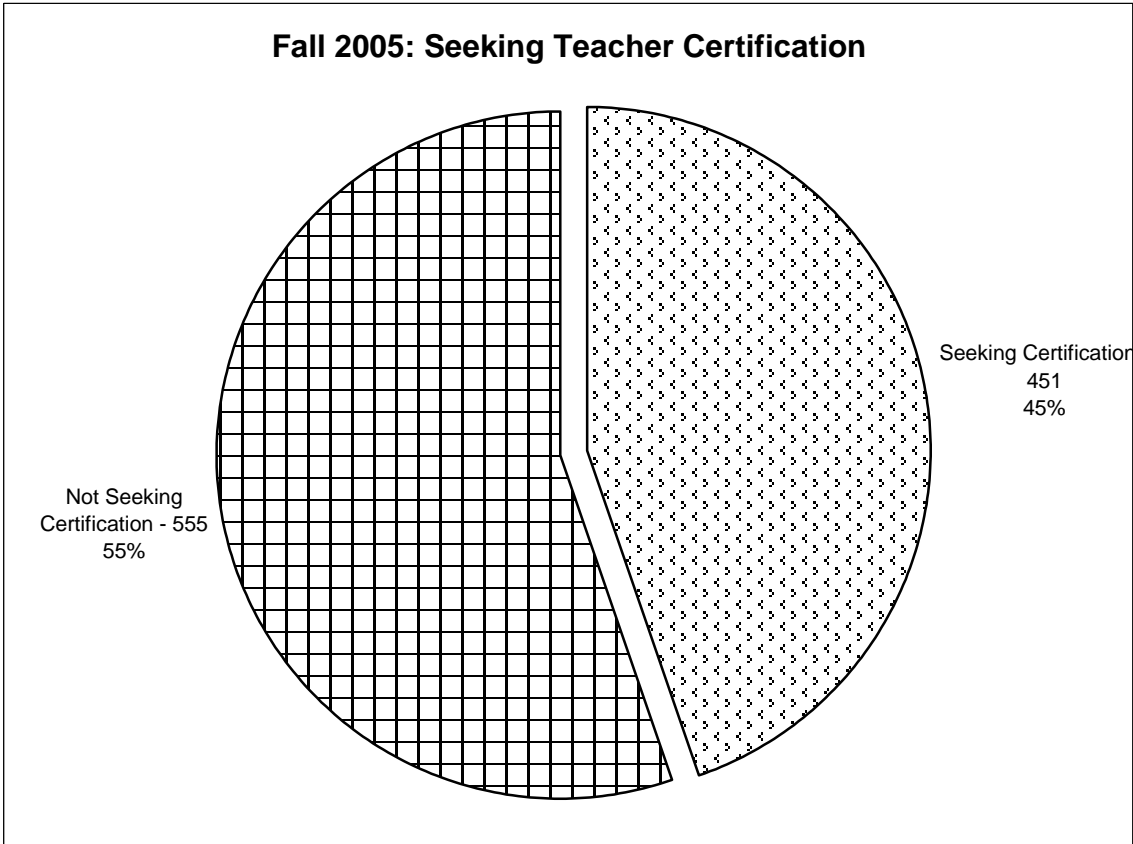
Extrapolation of the data brings the total for first generation to 774 and 77%.



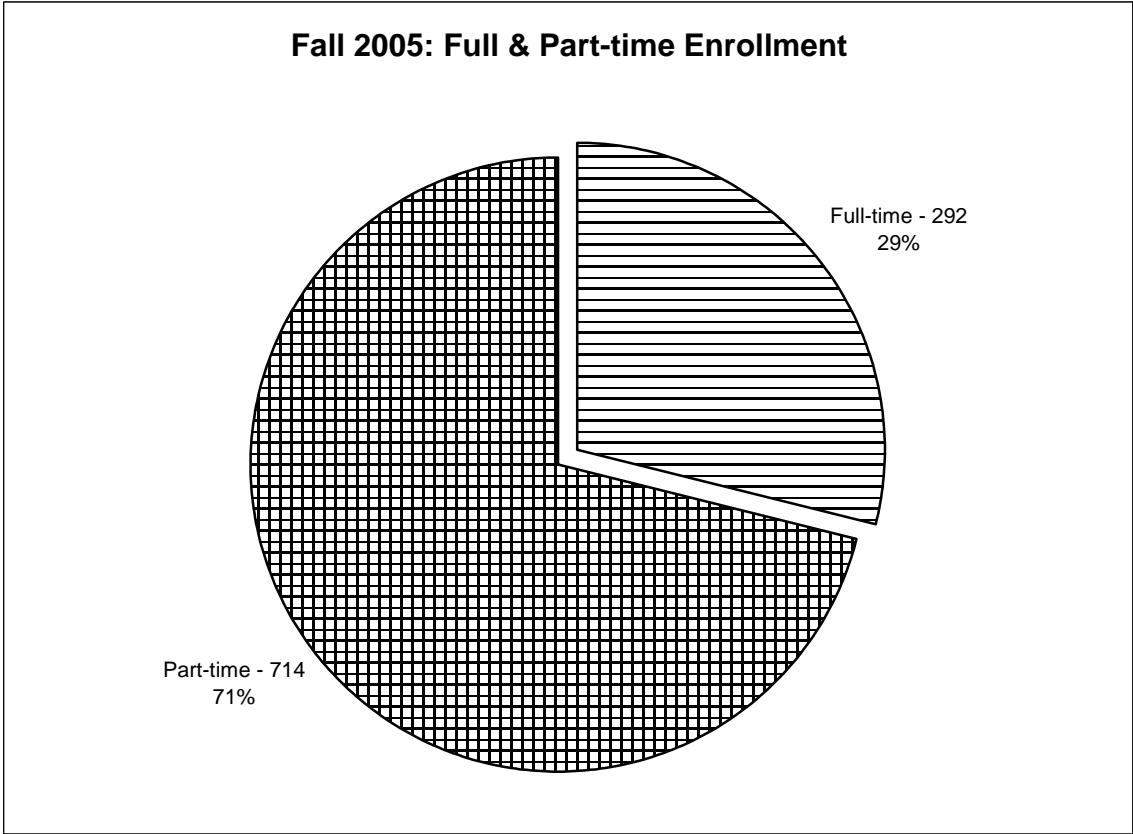
\* Enrollment in the education department is inclusive of all students whether seeking initial teacher certification, or additional certification.

<b>Fall 2005: Students by Program</b>	
Masters of Business Administration, General	26
Masters of Education, General	2
Masters of Education, Counseling	68
Masters of Education, Diagnostician	12
Masters of Education, Elementary Education	11
Masters of Education, Reading Specialist	8
Masters of Education, School Administration	53
Masters of Education, School Supervision	4
Masters of Education, Secondary Education	2
Bachelor of Arts, English	28
Bachelor of Arts, History	30
Bachelor of Arts, Interdisciplinary Studies	328
Bachelor of Arts, Psychology	44
Bachelor of Arts, Social Studies	23
Bachelor of Arts, Spanish	14
Bachelor of Business Administration, General	98
Bachelor of Business Administration, International Trade With Mexico	4
Bachelor of Business Administration, Management Information Systems	8
Bachelor of Science, Biology	2
Bachelor of Science, Criminal Justice	52
Bachelor of Science, Interdisciplinary Studies	13
Bachelor of Science, Mathematics	36
Bachelor of Science, Nursing	1
Graduate, Not seeking Degree	41
Post Bach, Seeking Teacher Certification	66
Professional, Not Seeking Degree	27
Undergraduate, Not Seeking Degree	1
Undecided	4
<b>Total</b>	<b>1006</b>

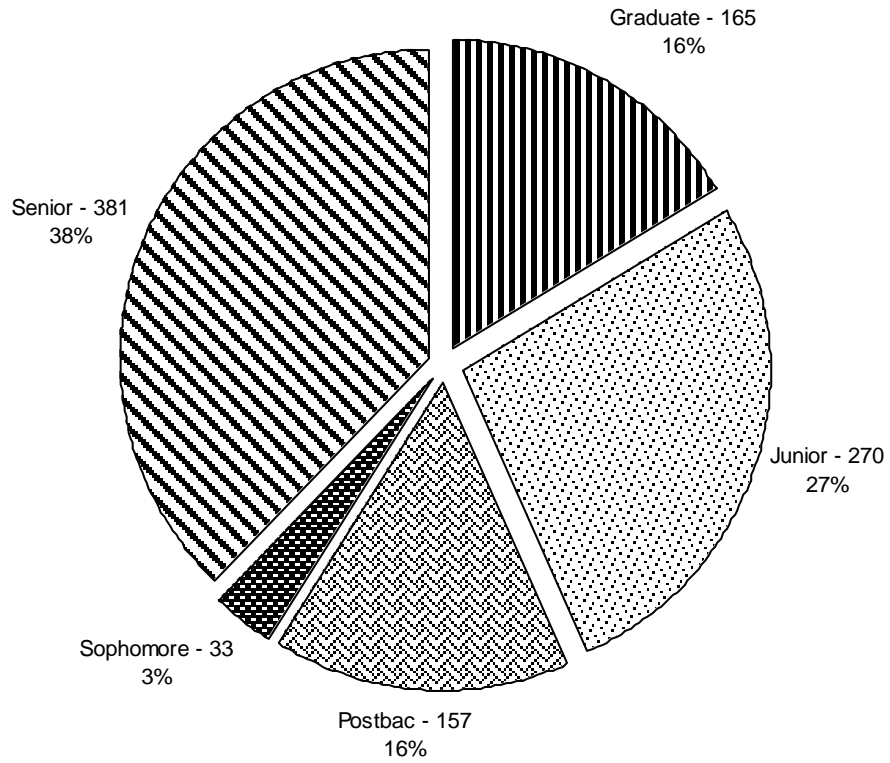




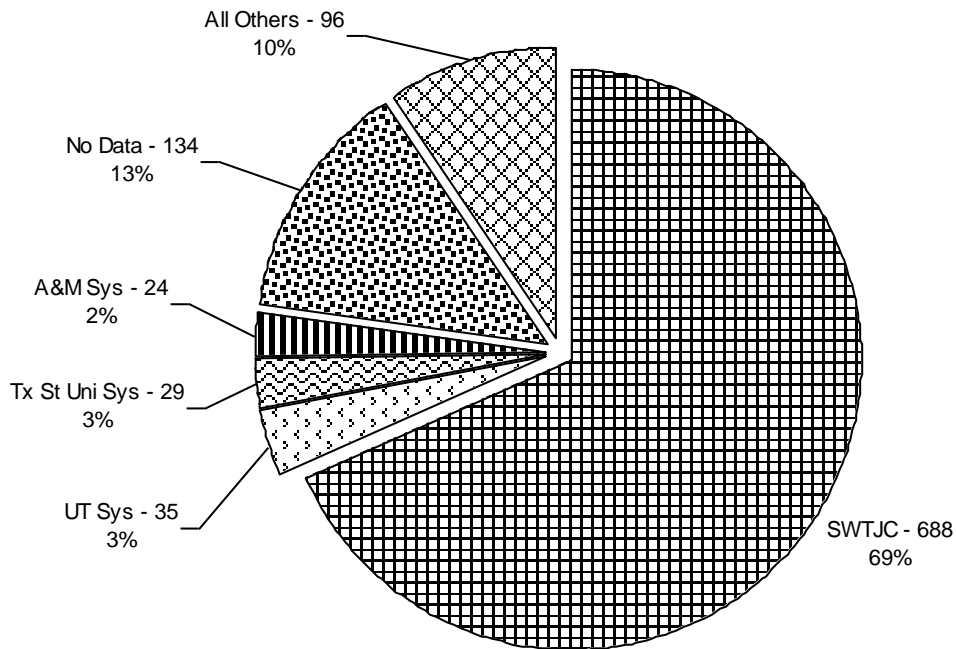
\* Seeking certification refers to initial teacher certification only.



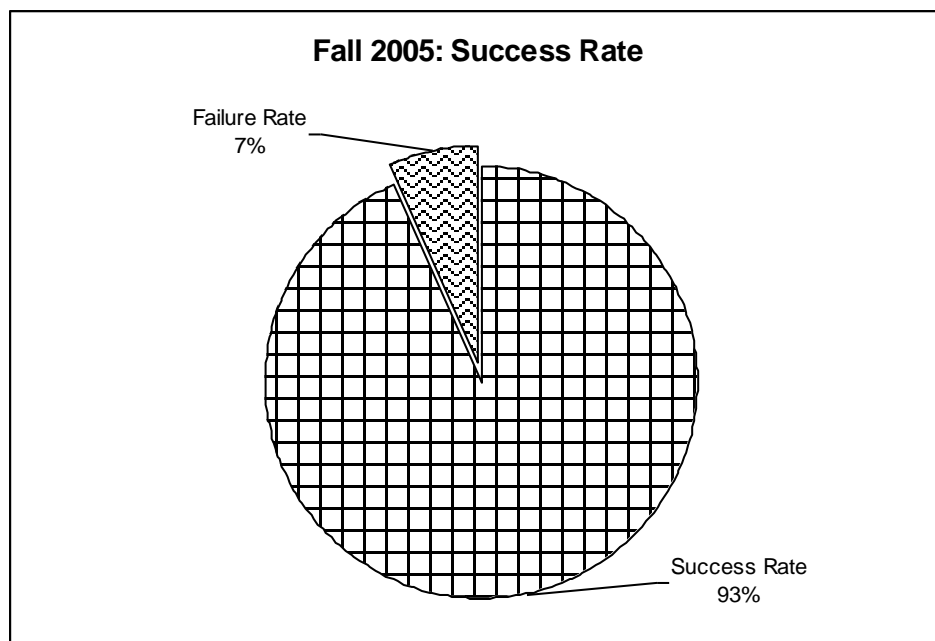
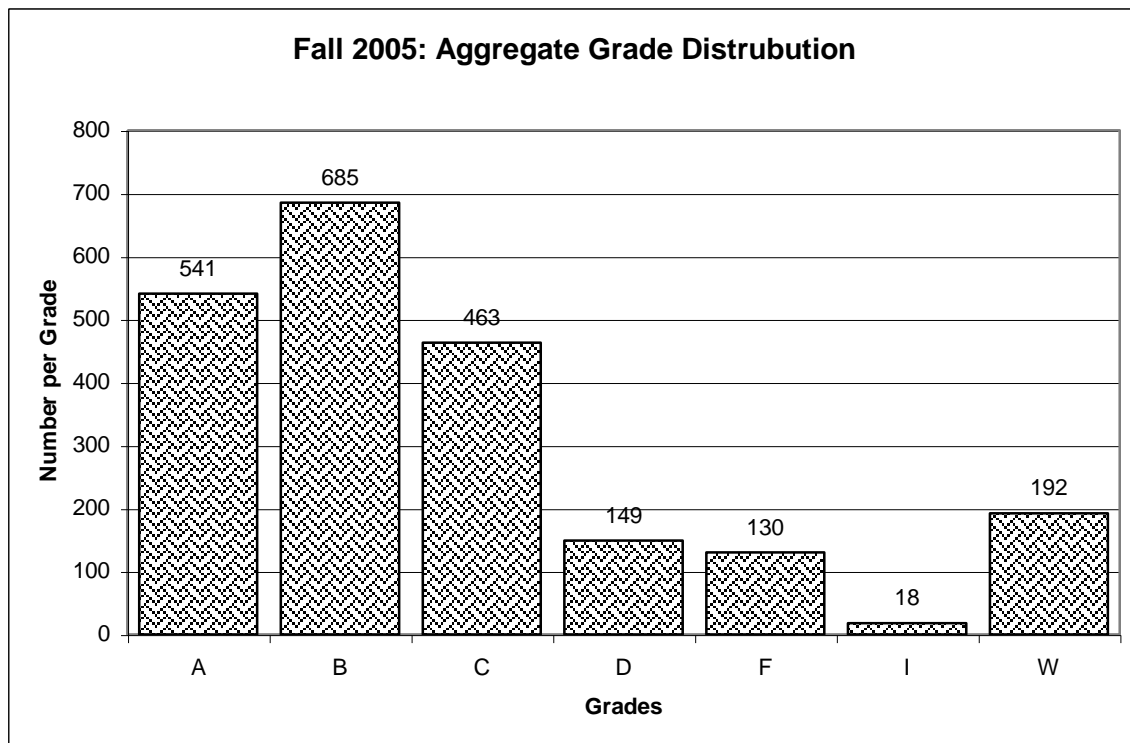
**Fall 2005: Enrollment by Classification**



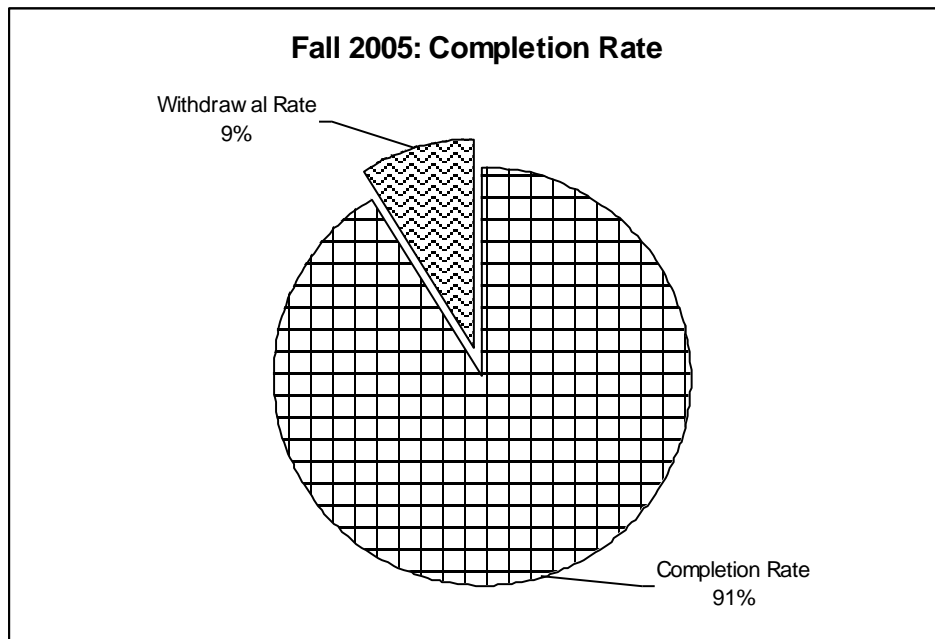
**Fall 2005: Enrollment by Transfer College**



Aggregate grade distribution includes only undergraduate students.

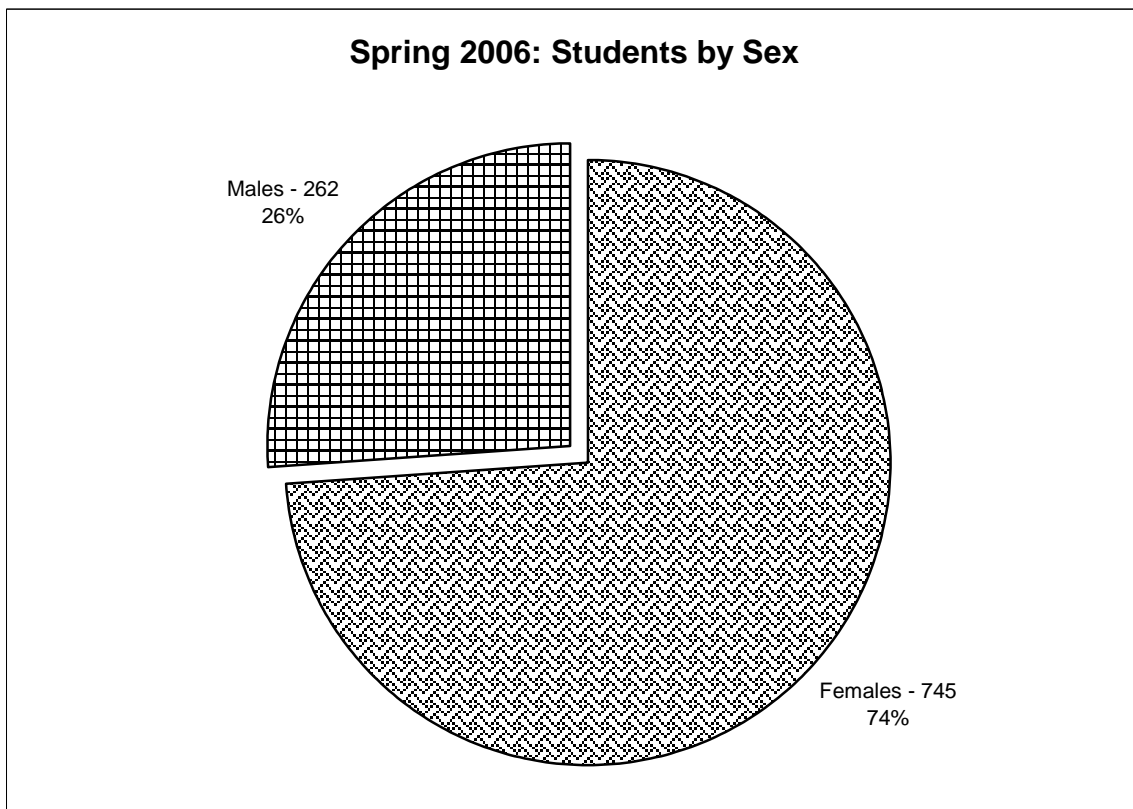
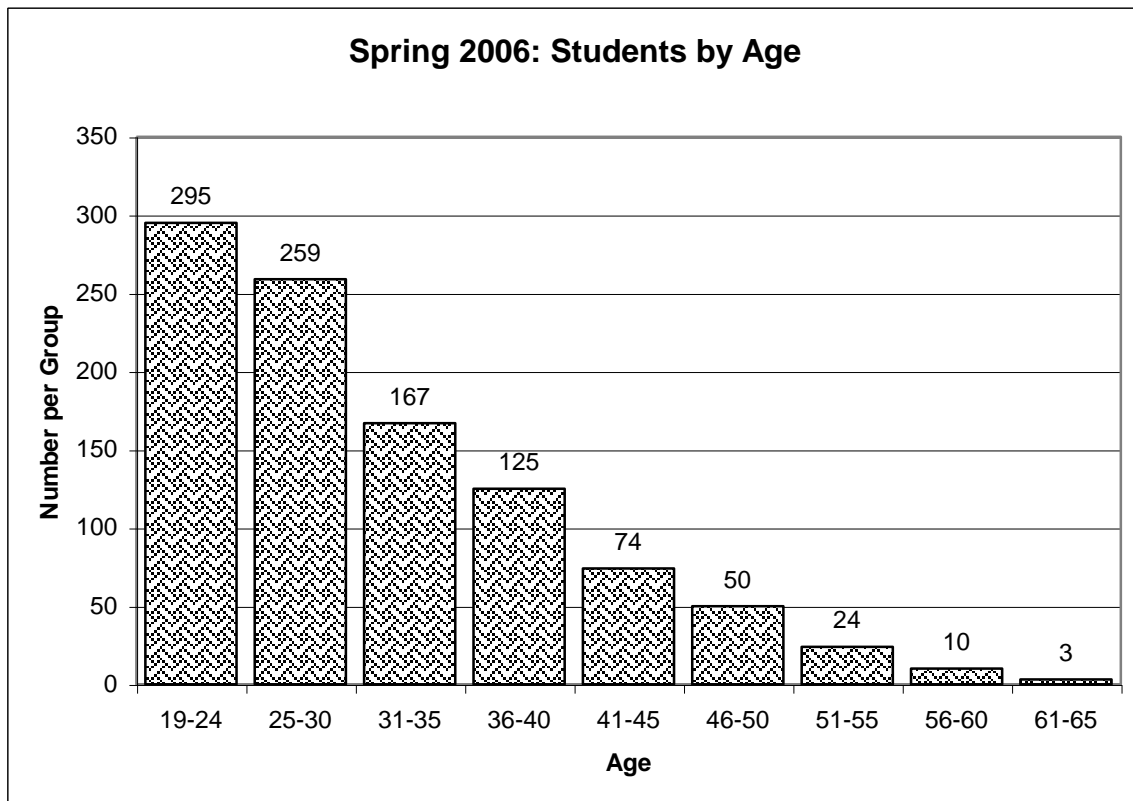


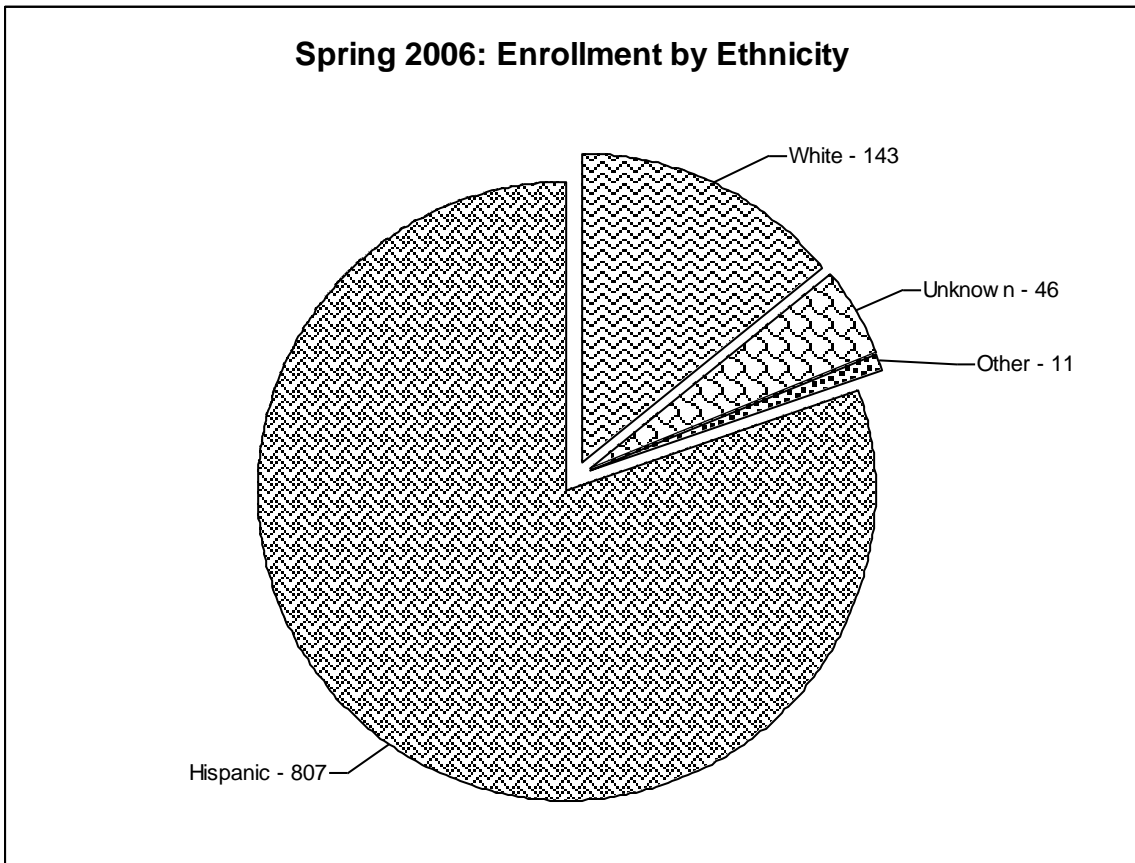
- > Success Rate = total of grades A, B, C, & D. (Undergraduates only)
- > Failure Rate = total of grades F.
- > Grades of I are not included in the calculation as these do not reflect either a completion or failure, rather work that may, or may not, be completed.
- > Grades of W are not included, as it is not known what the ultimate grade would have been.



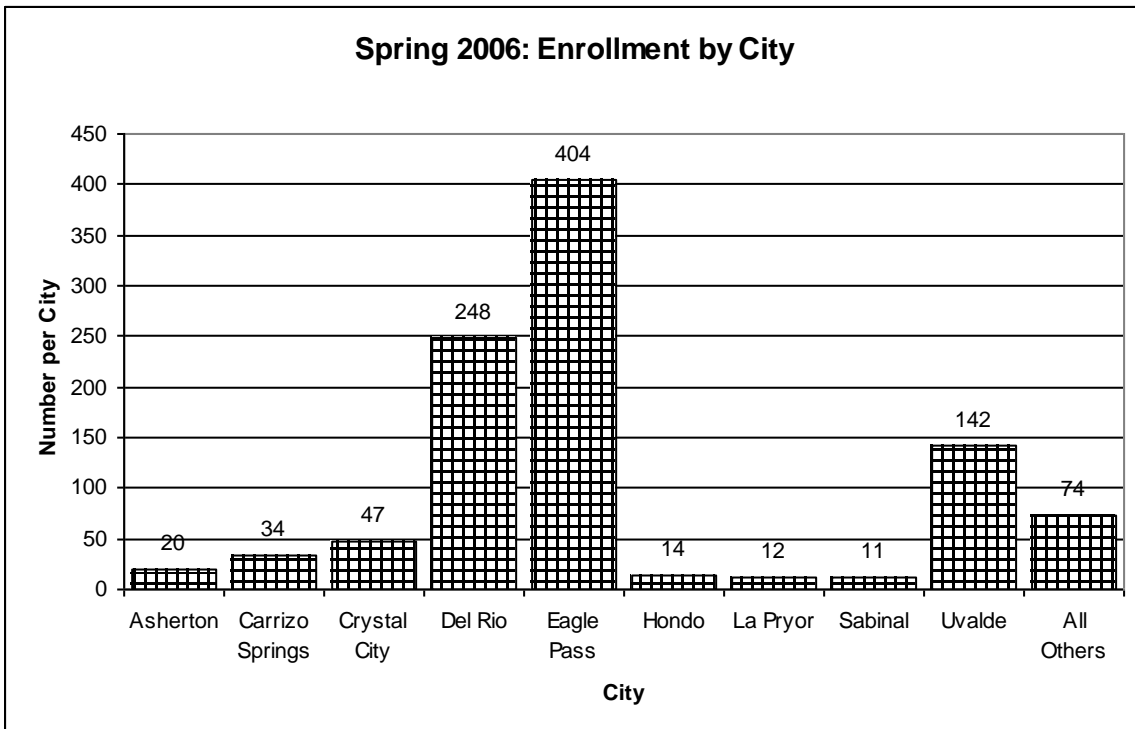
- > Completion Rate = total of grades A, B, C, D, & F (Undergraduates only)
- > Completion Rate is defined here as conclusion of a class based on assignment of a grade.
- > Grades of I are not included in the calculation as these do not reflect either a completion or failure, rather work that may, or may not, be completed.
- > Withdrawal rate = total withdrawals.

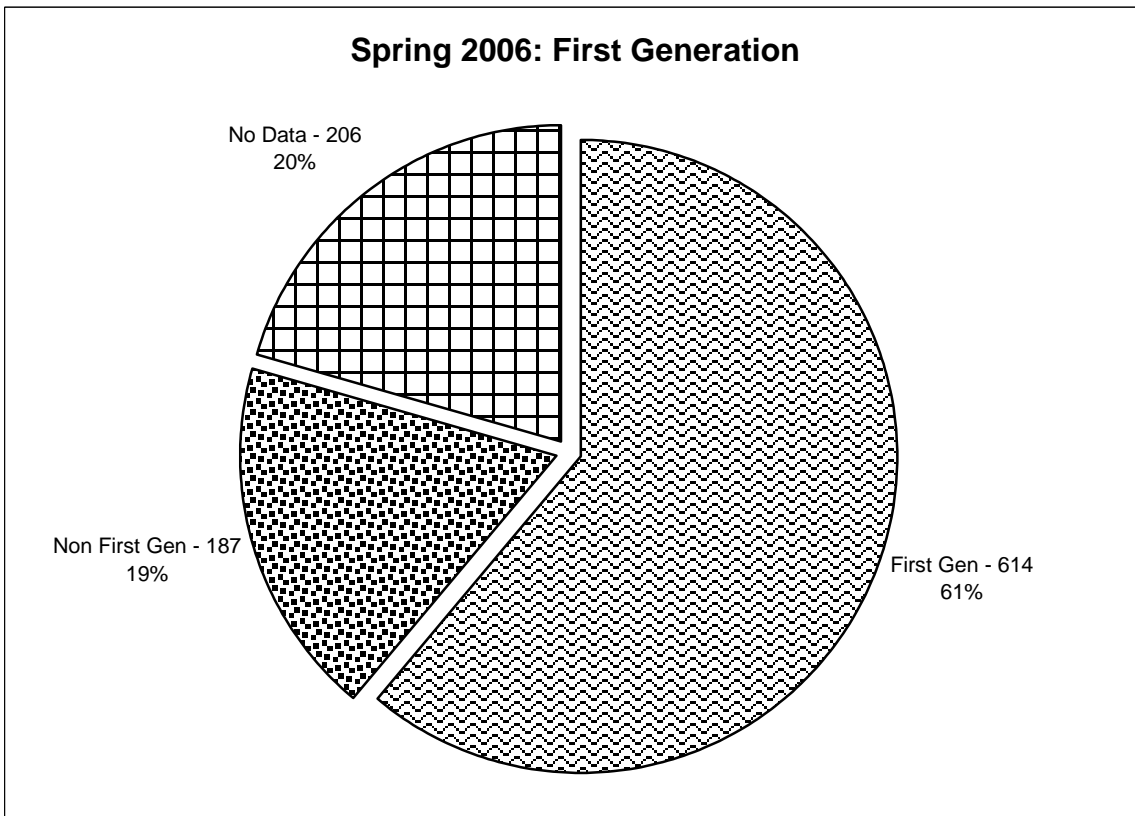
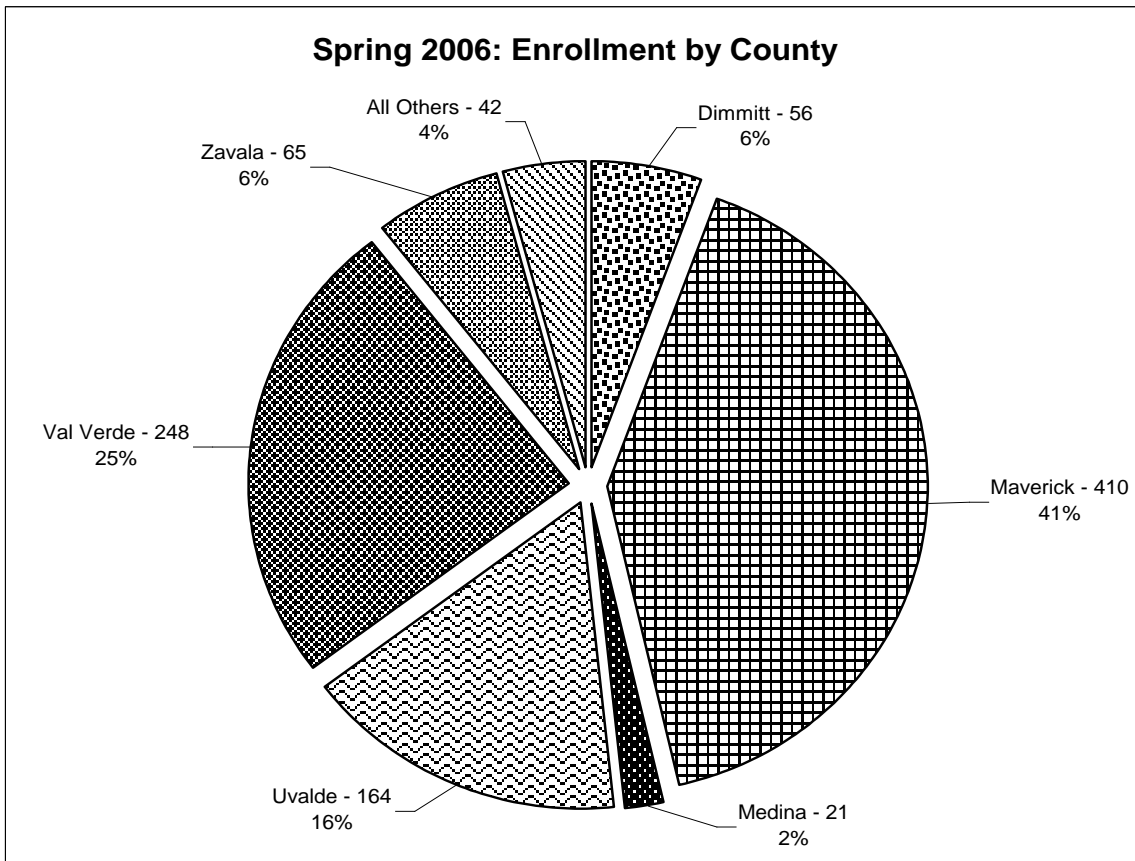
## IV. STUDENT PROFILE, SPRING 2006



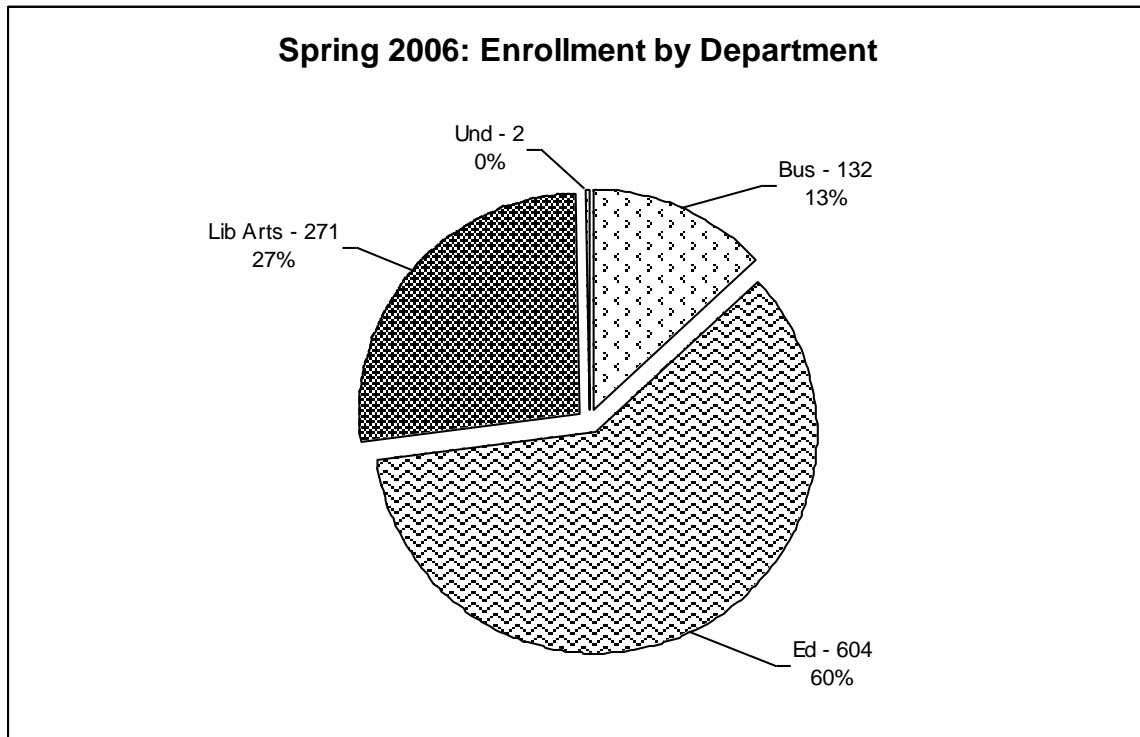


Other includes Asian, Native American, Black & Non-Resident Alien.





Extrapolation of the data brings the total for first generation to 775 and 72%.

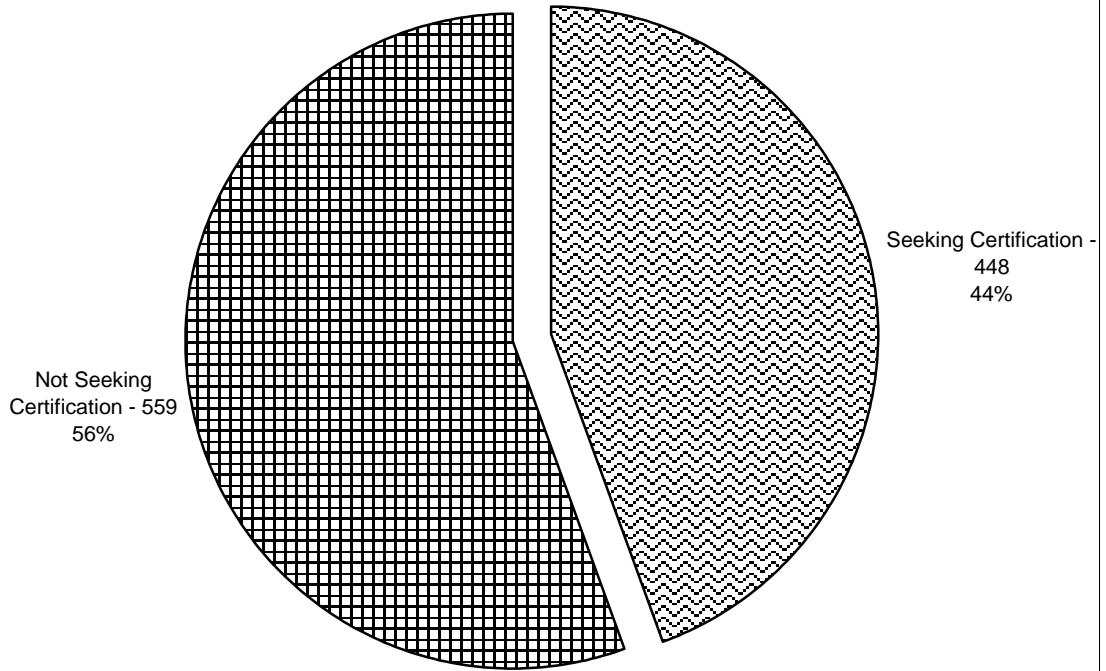


\*\* Enrollment in the education department is inclusive of all students whether seeking initial teacher certification, or additional certification.

<b>Spring 2006: Students by Program</b>	
Masters of Business Administration, General	23
Masters of Education, General	10
Masters of Education, Counseling	58
Masters of Education, Diagnostician	12
Masters of Education, Elementary Education	12
Masters of Education, Reading Specialist	8
Masters of Education, School Administration	50
Masters of Education, School Supervision	3
Masters of Education, Secondary Education	3
Bachelor of Arts, English	25
Bachelor of Arts, History	35
Bachelor of Arts, Interdisciplinary Studies	330
Bachelor of Arts, Psychology	45
Bachelor of Arts, Social Studies	19
Bachelor of Arts, Spanish	16
Bachelor of Business Administration, General	92
Bachelor of Business Administration, International Trade With Mexico	6
Bachelor of Business Administration, Management Information Systems	11
Bachelor of Science, Biology	4
Bachelor of Science, Criminal Justice	50
Bachelor of Science, Interdisciplinary Studies	12
Bachelor of Science, Mathematics	41
Bachelor of Science, Nursing	1
Graduate, Not seeking Degree	48
Post Bach, Seeking Teacher Certification	59
Professional, Not Seeking Degree	29
Undergraduate, Not Seeking Degree	3
Undecided	2
<b>Total</b>	<b>1007</b>

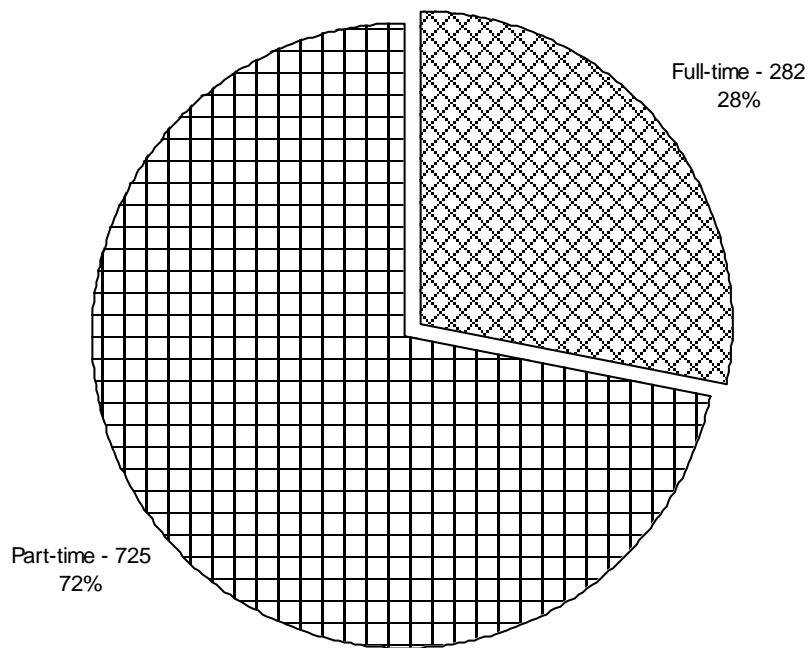


### Spring 2006: Seeking Teacher Certification

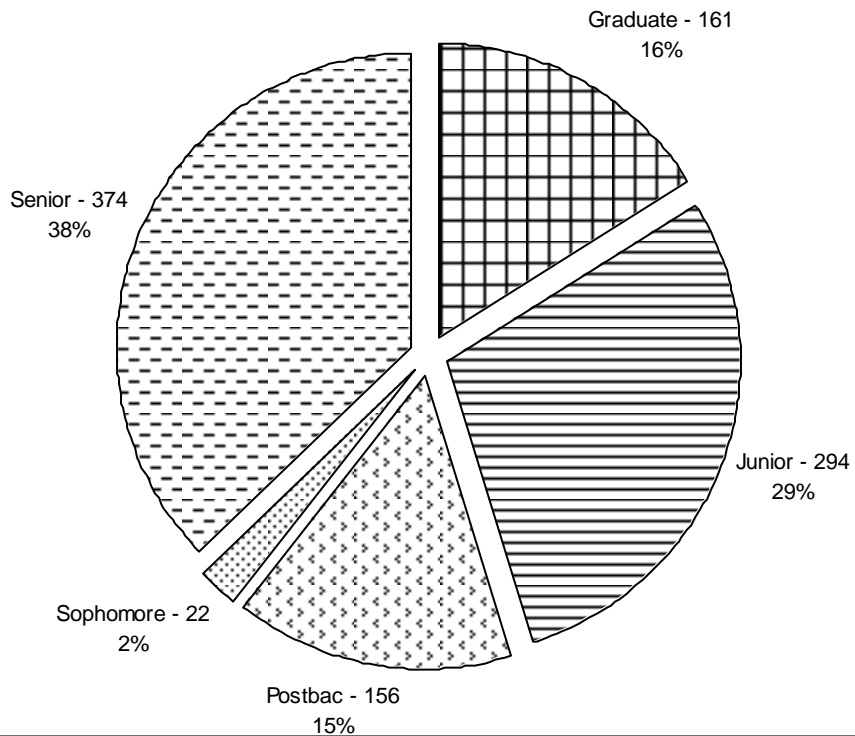


\*\* Seeking certification refers to initial teacher certification only.

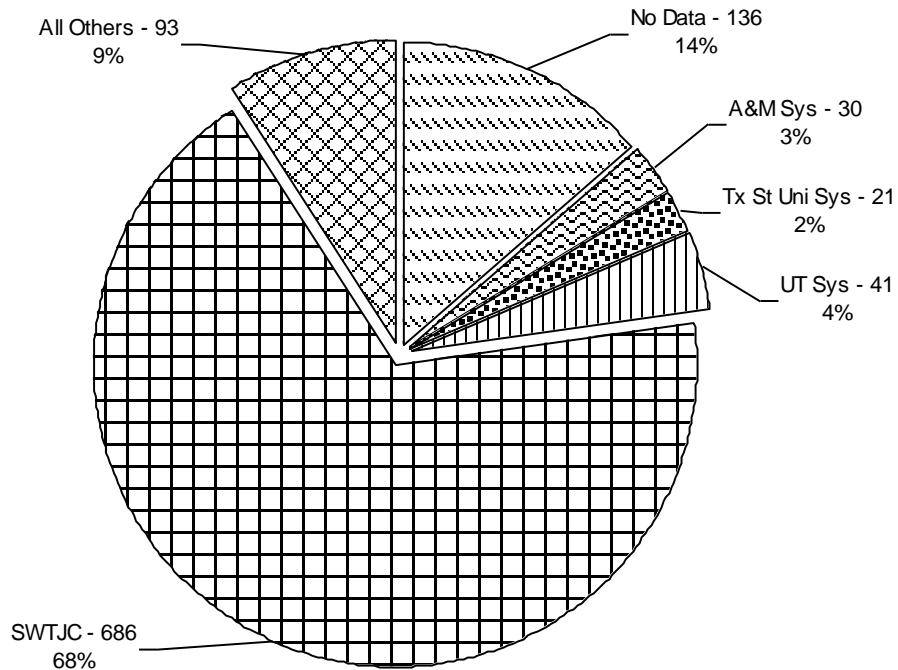
### Spring 2006: Full & Part-time Enrollment

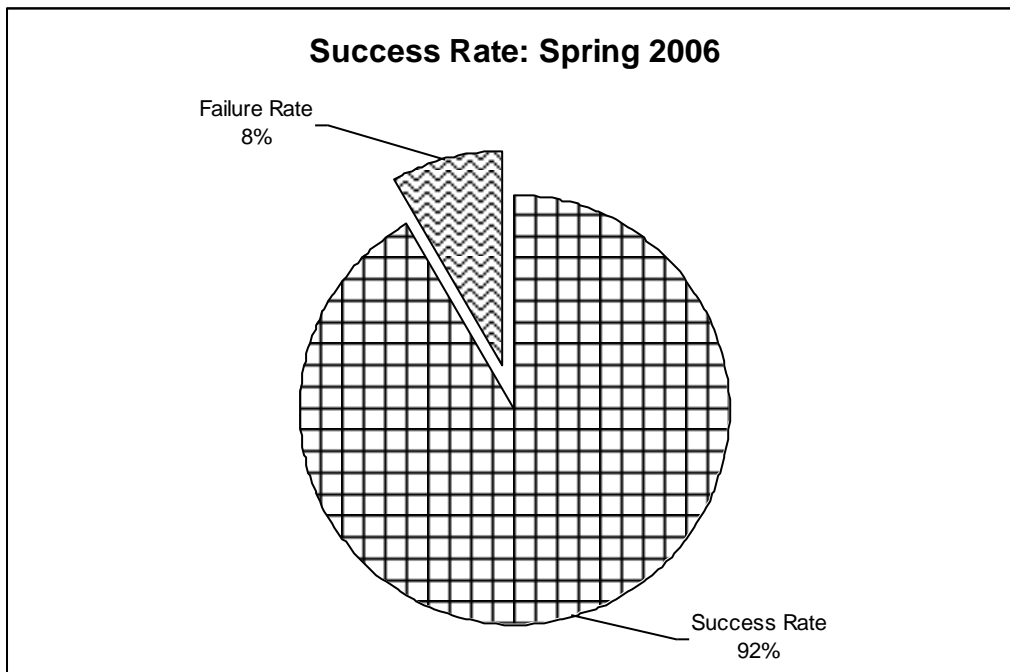
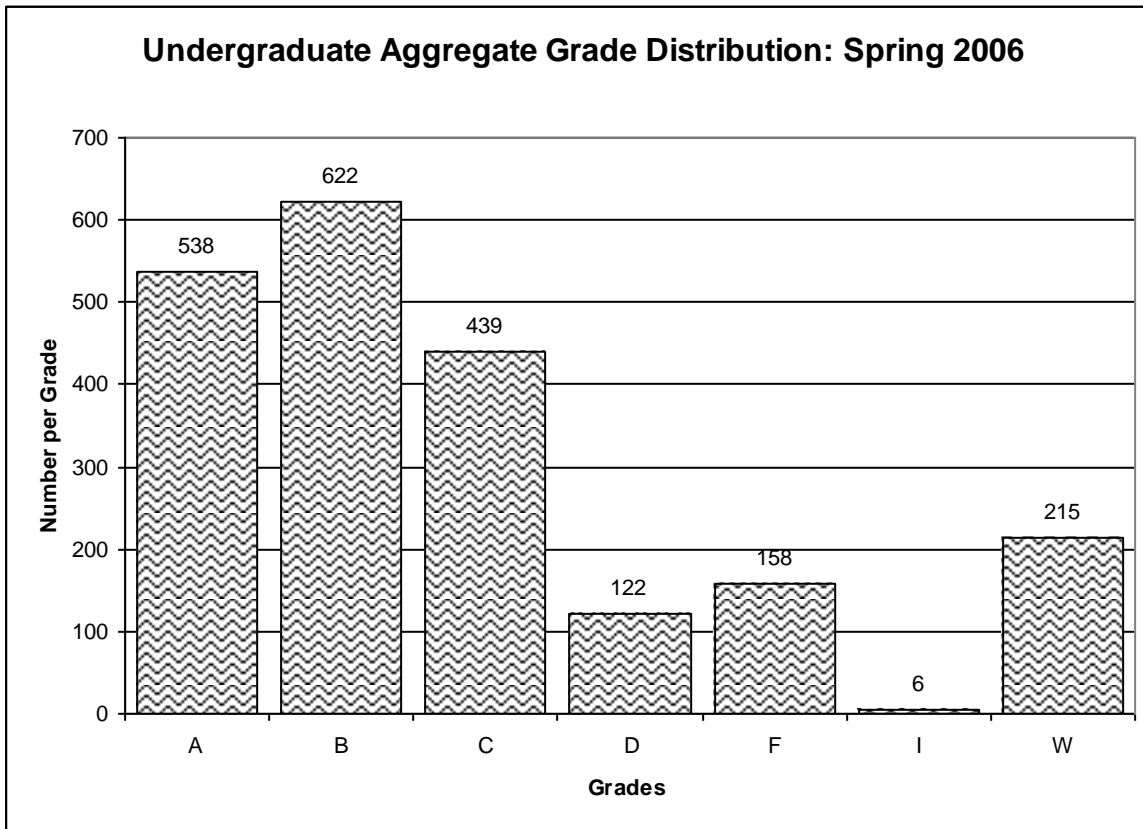


### Spring 2006: Enrollment by Classification

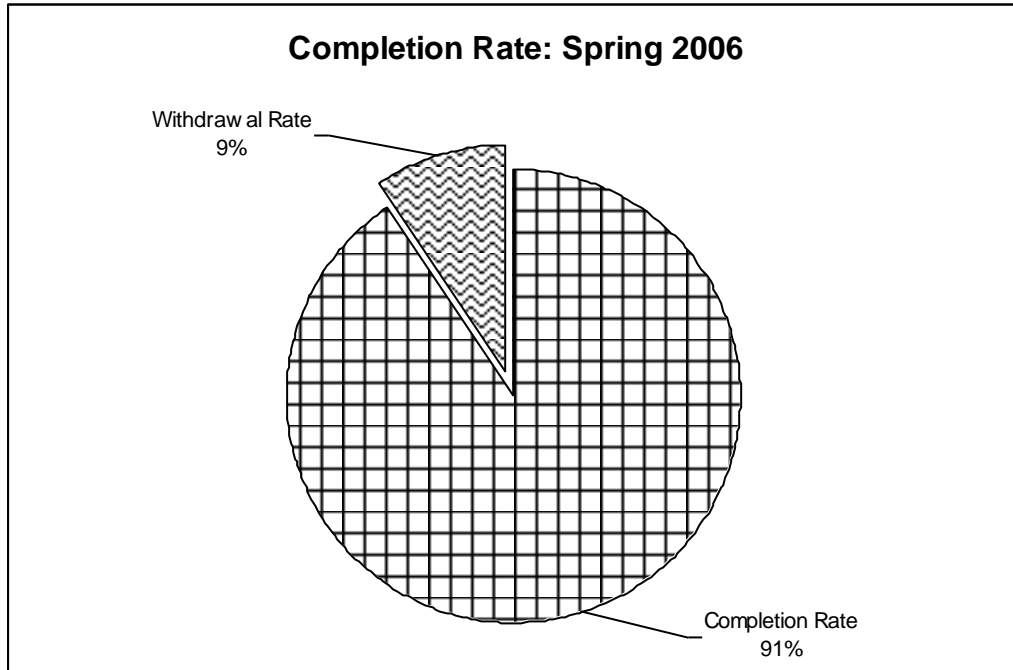


### Spring 2006: Enrollment by Transfer College



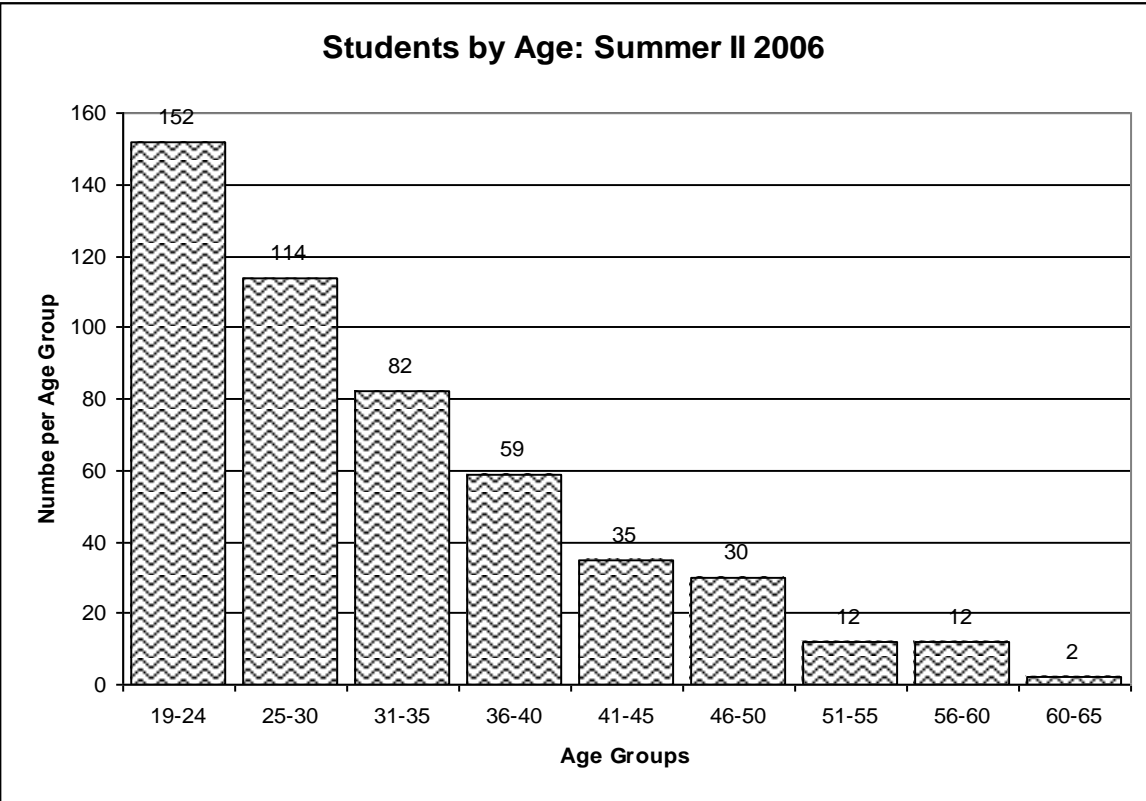
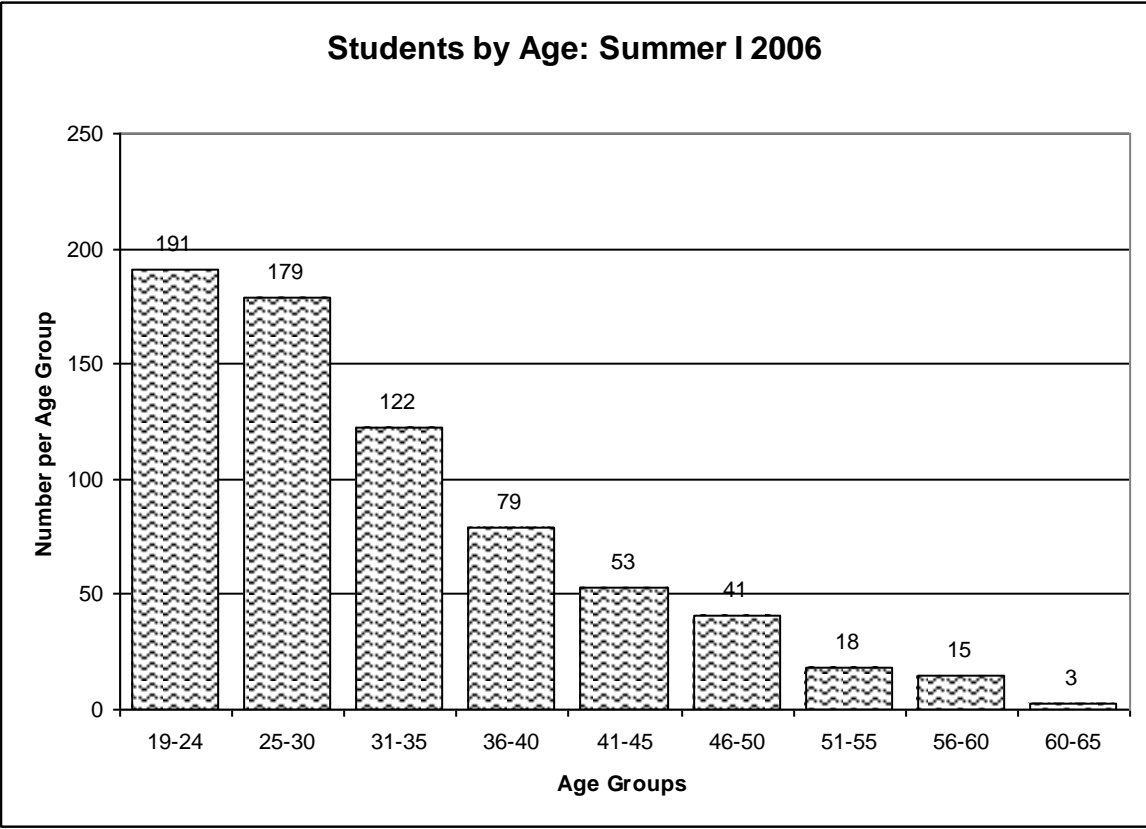


- > Success Rate = total of grades A, B, C, & D.
- > Failure Rate = total of grades F.
- > Grades of I are not included in the calculation as these do not reflect either a completion or failure, rather work that may, or may not, be completed.
- > Grades of W are not included as it is not known what the ultimate grade would have been.

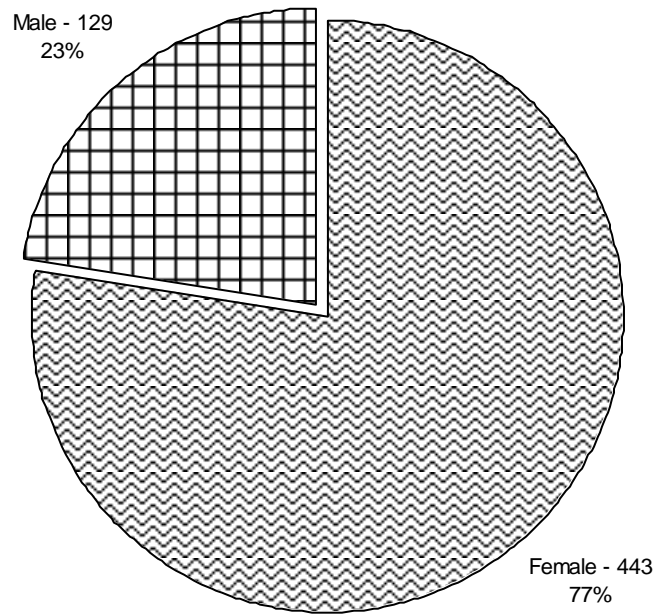


- > Completion Rate = total of grades A, B, C, D & F (Undergraduates only)
- > Completion Rate is defined here as conclusion of a class based on assignment of a grade.
- > Grades of I are not included in the calculation as these do not reflect either a completion or failure, rather work that may, or may not, be completed.
- > Withdrawal rate = total withdrawals.

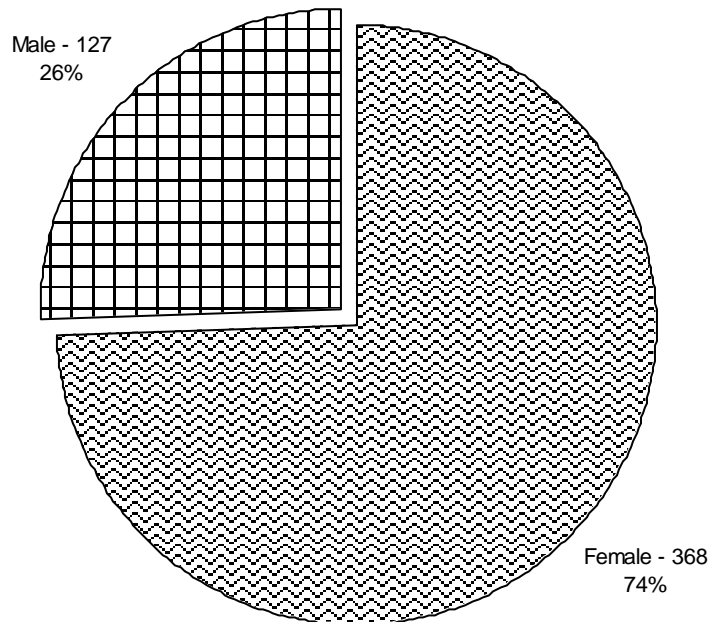
# V. STUDENT PROFILE, SUMMER I & II 2006



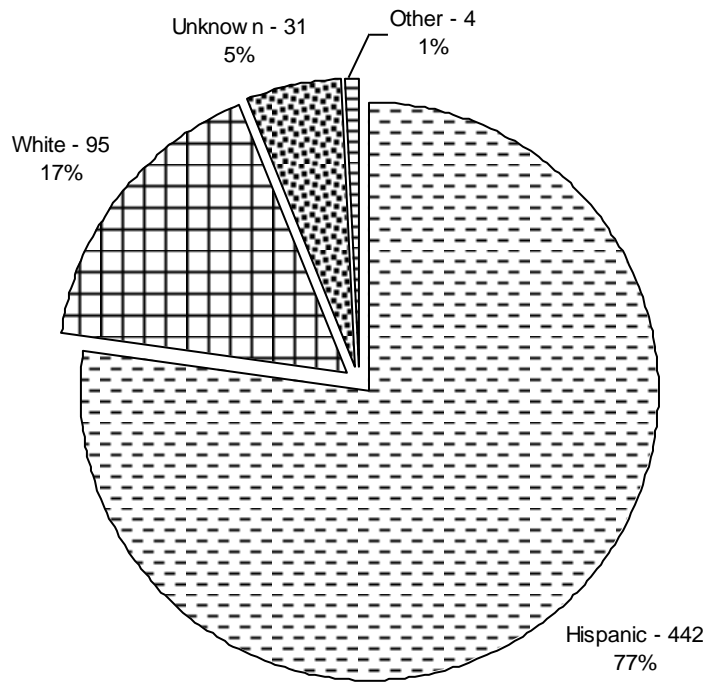
### Students by Sex: Summer I 2006



### Students by Sex: Summer II 2006

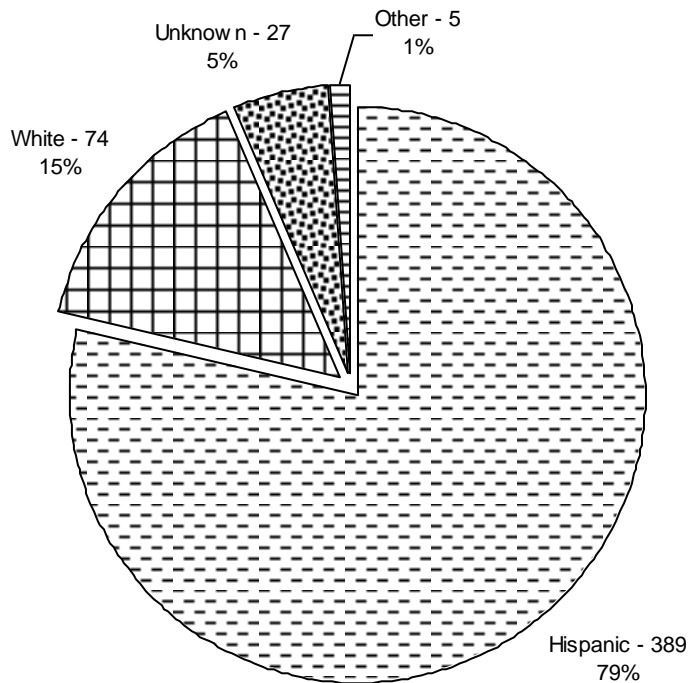


### Students by Ethnicity: Summer I 2006



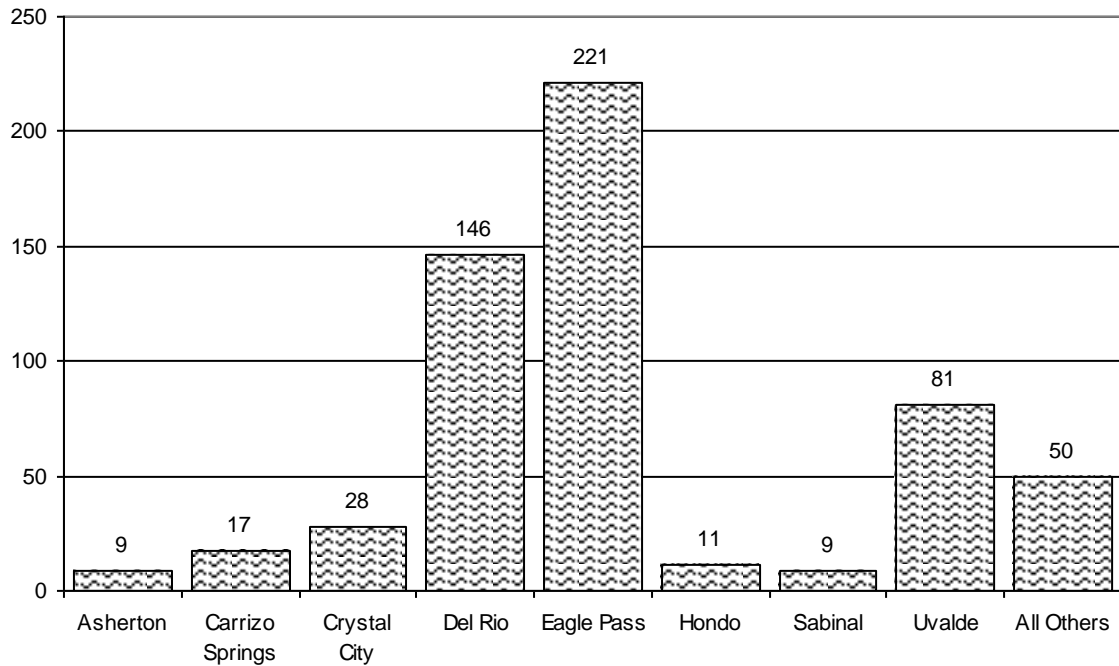
Other = American Indian/Alaska Native & Asian/Pacific Islander

### Students by Ethnicity: Summer II 2006

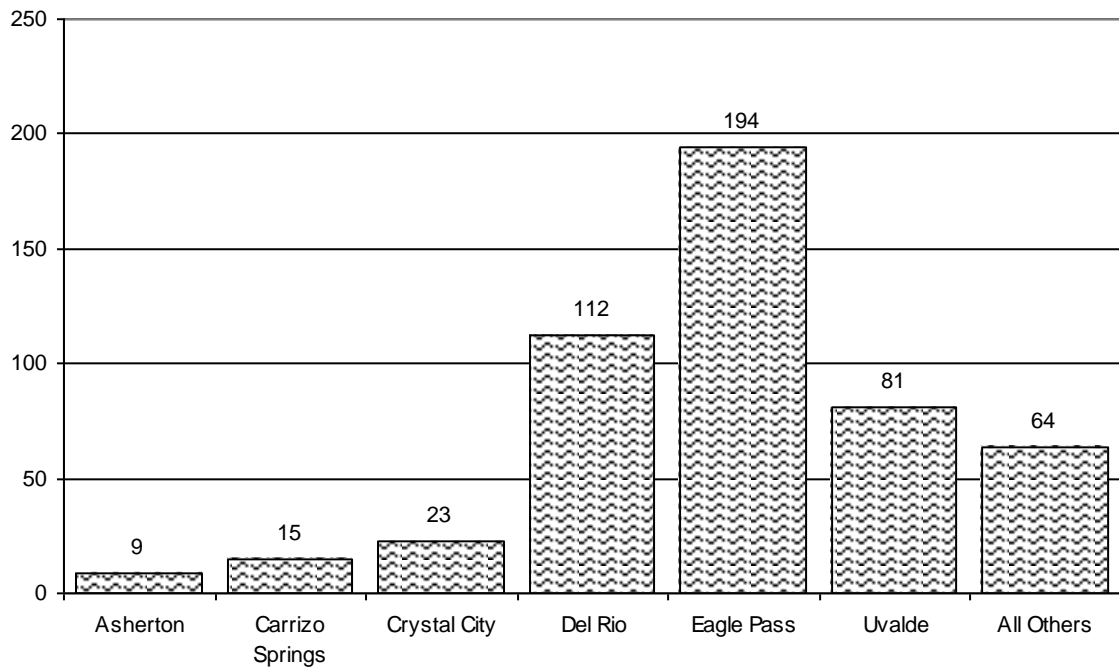


Other = Black, American Indian/Alaska Native & Asian/Pacific Islander

**Students by City: Summer I 2006**

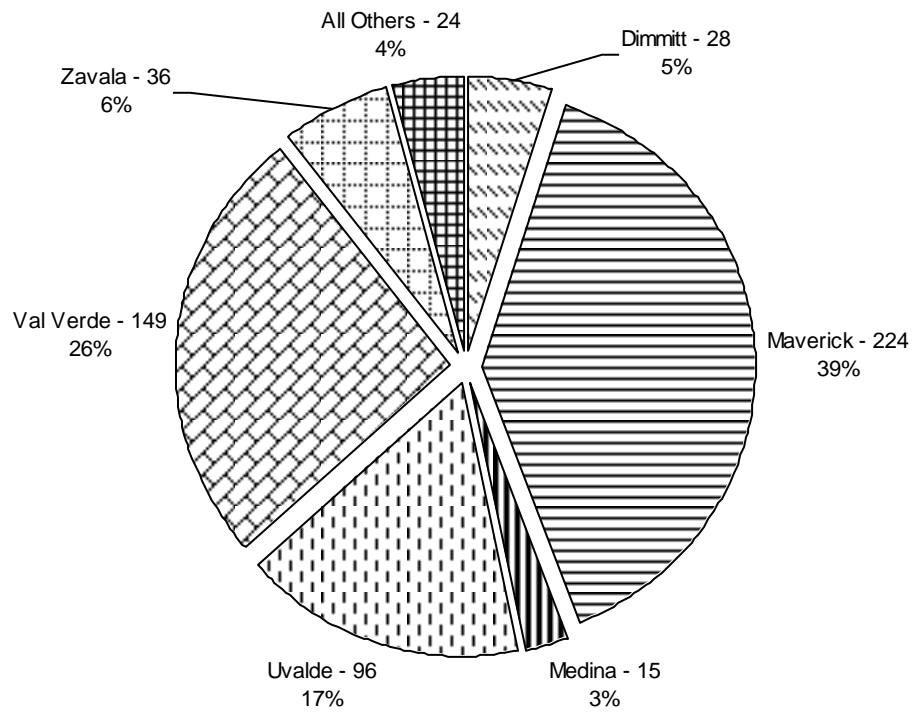


**Students by City: Summer II 2006**

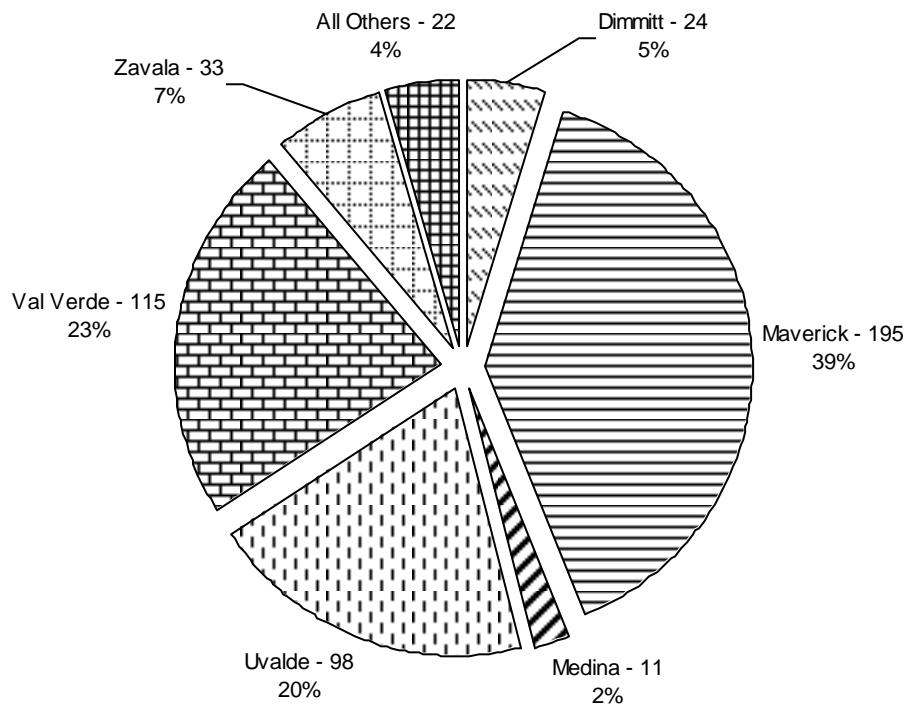




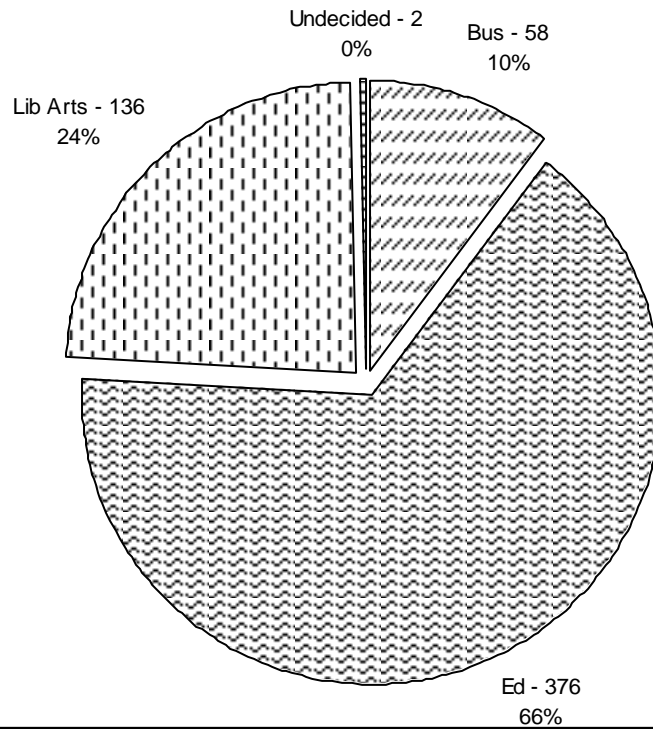
### Students by County: Summer I 2006



### Students by County: Summer II 2006

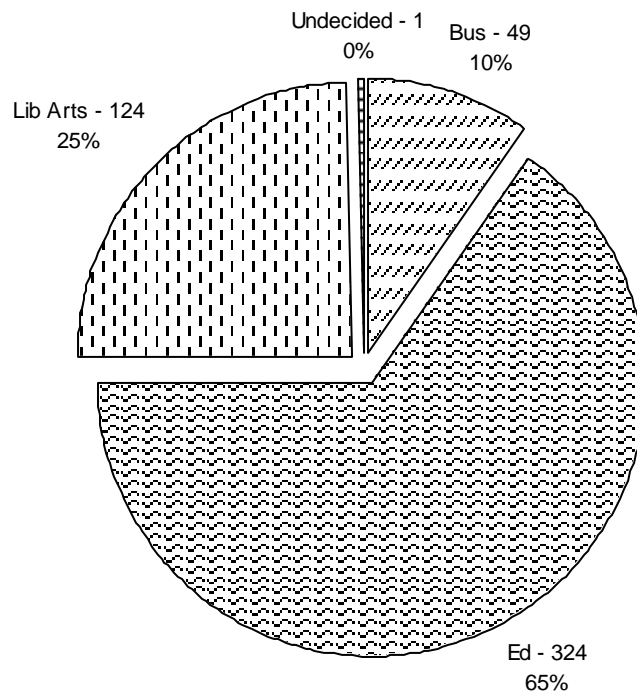


### Student: by Department: Summer I 2006



\*\* Enrollment in the education department is inclusive of all students whether seeking initial teacher certification, or additional certification.

### Students by Department: Summer II 2006



**Program: Sum I 2006**

	16
	30
	6
	5
	7
	7
	34
	3

al 147 134,715.00 44 32,626.00 167	147 134,715.00 44 32,626.00 167,341.00	134,715.00 44 32,626.00 1
37	32,125.36	
1,620	4,263,212.28	

**Program: Sum I 2006**

	16
	30
	6
	5
	7
	7
	34
	3

al	147	134,715.00	44	32,626.00	167	147	134,715.00	44	32,626.00	167,341.00	134,715.00	44	32,626.00	1
					37					32,125.36				
					1,620					4,263,212.28				