



SECTION A

NEW STUDENTS

Fact Book 2000
Sul Ross State University

SECTION A

NEW STUDENTS

TABLE OF CONTENTS

1. Retention and Completion/Graduation Rates for First-Time, Full-Time Freshmen, 1984-1998
2. Mean ACT/SAT Scores and High School Class Rank for New Entering Freshmen, Fall 1986-1999 (chart)
3. Mean ACT/SAT Scores and High School Class Rank Quartiles for New Entering Freshmen, Fall 1986-1999 (table)
4. New Freshmen, Transfers, and Continuing Undergraduates, Fall 1987-1999
5. New Freshmen and Transfer Undergraduates by County of Origin, Fall 1987-1999
6. New Freshmen and Transfer Undergraduates by Full-time/Part-time Status, Fall 1988-1999
7. New Freshmen Undergraduates by Ethnicity, Fall 1988-1999
8. New Transfer Undergraduates by Ethnicity, Fall 1988-1999
9. New Freshmen Undergraduates by School, Fall 1988-1999
10. New Freshmen Undergraduates by Major, Fall 1988-1999
11. New Freshmen Undergraduates by Major, Fall 1988-1999 (cont.)
12. New Transfer Undergraduates by School, Fall 1988-1999
13. New Transfer Undergraduates by Major, Fall 1988-1999
14. New Transfer Undergraduates by Major, Fall 1988-1999 (cont.)

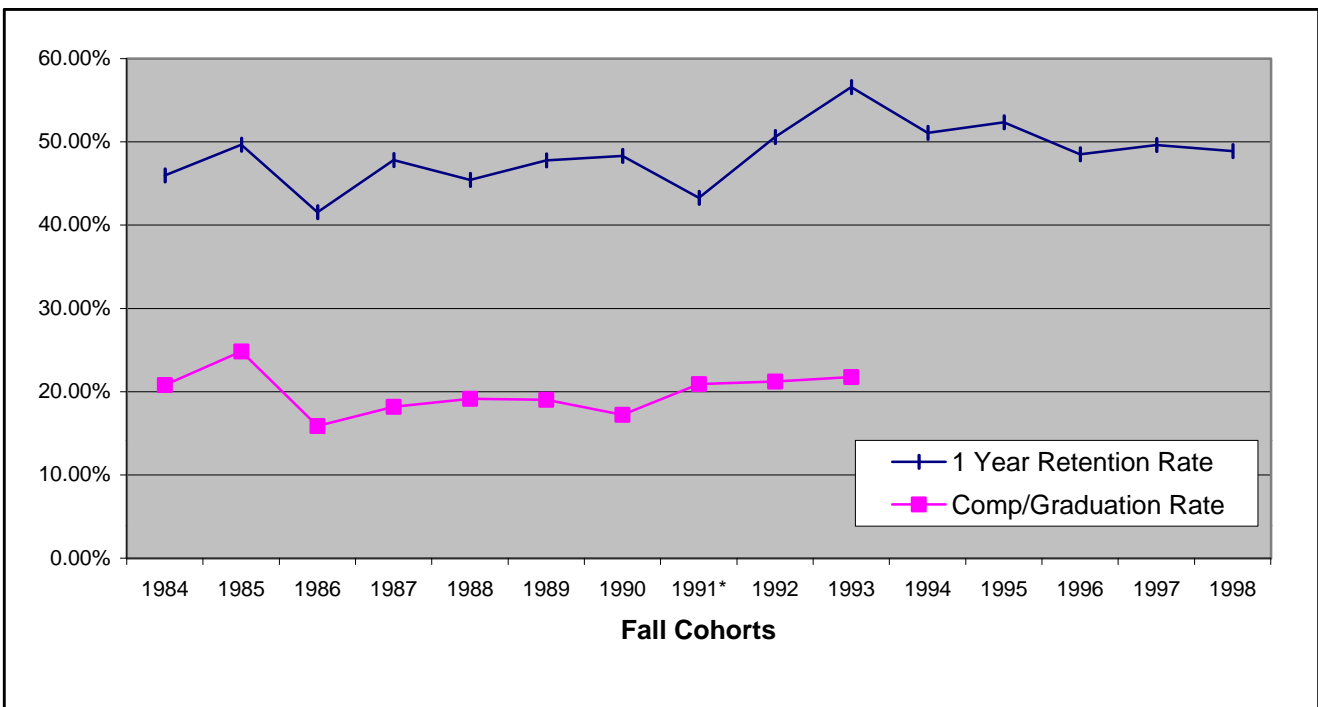
**Retention and Completion/Graduation Rates
for First-Time, Full-Time Freshmen, 1984-1998**

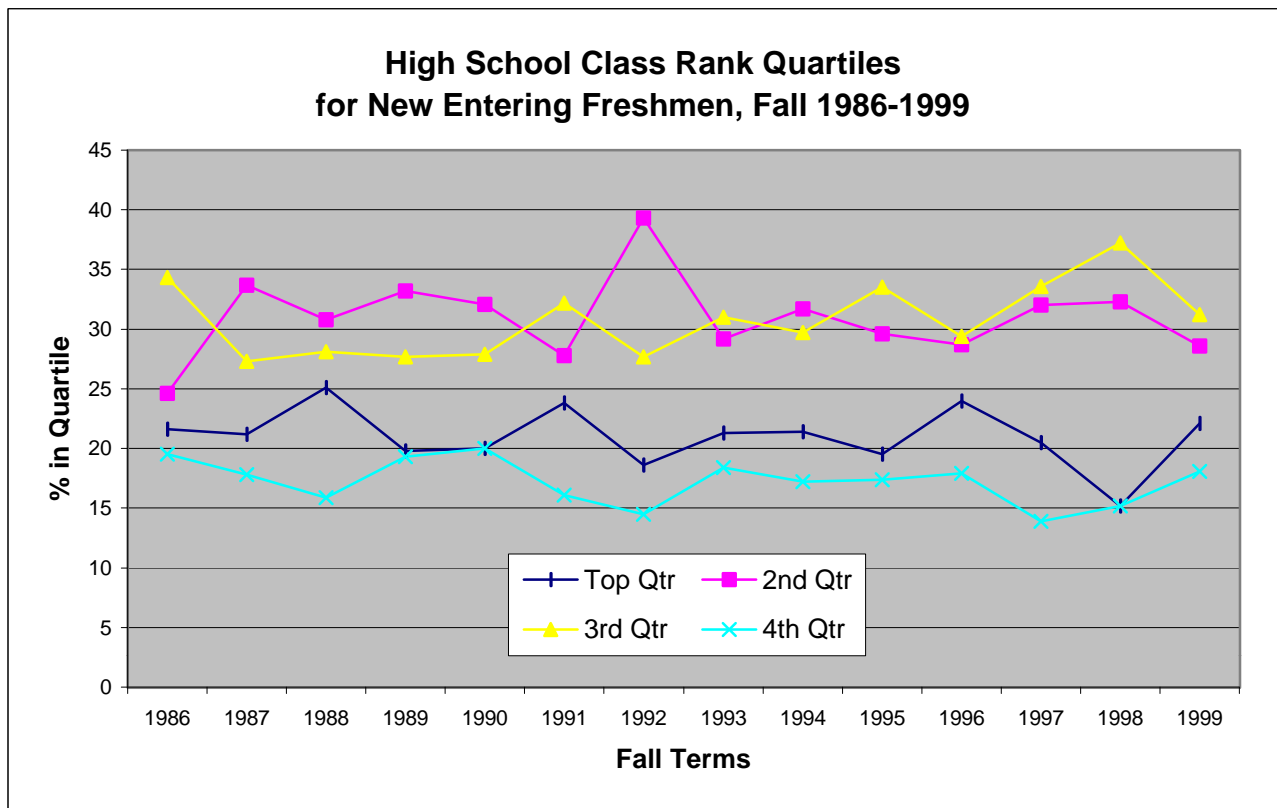
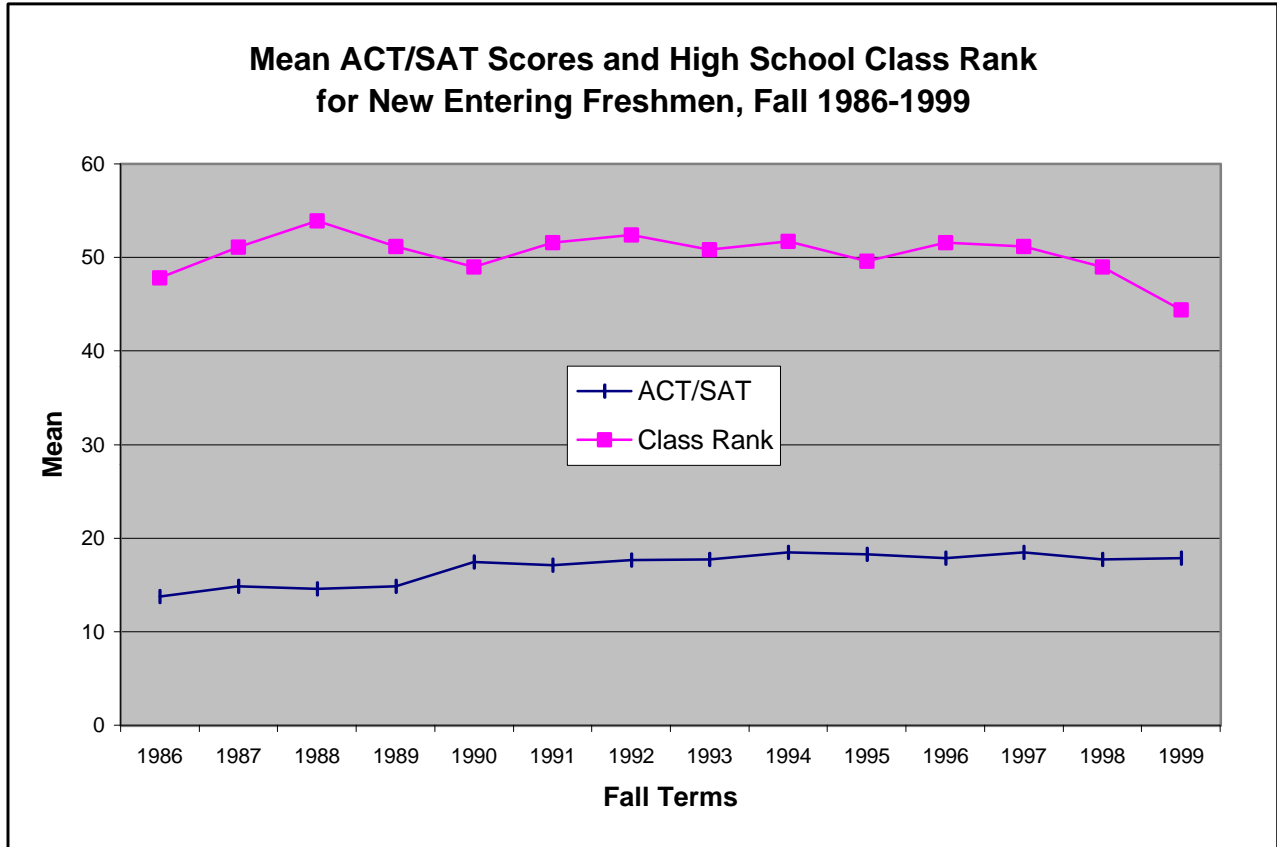
FALL	COHORT SIZE	RETAINED THE FOLLOWING FALL		COMPLETION/ GRADUATION RATE
1984	322	148	45.96%	20.81%
1985	290	144	49.66%	24.83%
1986	296	123	41.55%	15.89%
1987	297	142	47.81%	18.18%
1988	350	159	45.43%	19.14%
1989	247	118	47.77%	19.03%
1990	267	129	48.31%	17.23%
1991*	312	135	43.27%	20.90%
1992	263	133	50.57%	21.22%
1993	297	168	56.57%	21.77%
1994	323	165	51.08%	
1995	382	200	52.36%	
1996	355	172	48.50%	
1997	278	138	49.64%	
1998	311	152	48.87%	

SOURCE: CBM001, IPEDS Graduation Rate Survey.

*Beginning in 1991, graduation rates are based on IPEDS and Student Right to Know cohorts (these will differ from the cohorts listed for calculating retention).

Retention cohorts include full-time, first-time freshmen regardless of major.





**Mean ACT/SAT Scores and High School Class Rank Quartiles
for New Entering Freshmen (FTTIC), Fall 1986-1999**

Fall Term	ACT/SAT		CLASS RANK						FTTIC Total
	Mean	Mean	Median	Top Qtr	2nd Qtr	3rd Qtr	4th Qtr	Unknown	
1986	13.76	47.8	44.4	51	58	81	46	78	314
Percent (a)				21.6	24.6	34.3	19.5	24.8	
1987	14.82	51.1	54.9	56	89	72	47	62	326
Percent				21.2	33.7	27.3	17.8	19.0	
1988	14.55	53.9	56.6	84	103	94	53	58	392
Percent				25.1	30.8	28.1	15.9	14.8	
1989	14.84	51.2	52.6	40	67	56	39	39	241
Percent				19.8	33.2	27.7	19.3	16.2	
1990	17.46 (b)	49.0	50.9	48	77	67	48	50	290
Percent				20.0	32.1	27.9	20.0	17.2	
1991	17.09	51.6	51.3	65	76	88	44	49	322
Percent				23.8	27.8	32.2	16.1	15.2	
1992	17.65	52.4	54.0	45	95	67	35	51	293
Percent				18.6	39.3	27.7	14.5	17.4	
1993	17.74	50.8	50.0	59	81	86	51	42	319
Percent				21.3	29.2	31.0	18.4	13.2	
1994	18.49 (c)	51.8	51.5	62	92	86	50	33	323
Percent				21.4	31.7	29.7	17.2	10.2	
1995	18.25	49.6	49.3	65	99	112	58	48	382
Percent				19.5	29.6	33.5	17.4	12.6	
1996	17.84 (d)	51.6	52.5	71	85	87	53	44	340
Percent				24.0	28.7	29.4	17.9	12.9	
1997	18.49 (e)	51.2	50.3	50	78	82	34	38	282
Percent				20.5	32.0	33.6	13.9	13.5	
1998	17.74	49.0	48.1	43	91	105	43	29	311
Percent				15.2	32.3	37.2	15.2	9.3	
1999	17.83	44.4	45.0	44	57	62	36	28	227
Percent				22.1	28.6	31.2	18.1	12.3	

SOURCE: CBM001, FTIC, SRK files.

(a) Percentages are of those known, e.g., Top Quarter Fall 1986 = 51/(314 - 78).

(b) The Enhanced ACT was first administered in October 1989. A new concordance table was used to convert SAT to equivalent ACT scores for Fall 1990, one which produces substantially higher ACT equivalents than the one previously in use.

(c) Beginning with 1994, Student Right to Know cohorts are used to represent new freshmen rather than only CBM001 designation.

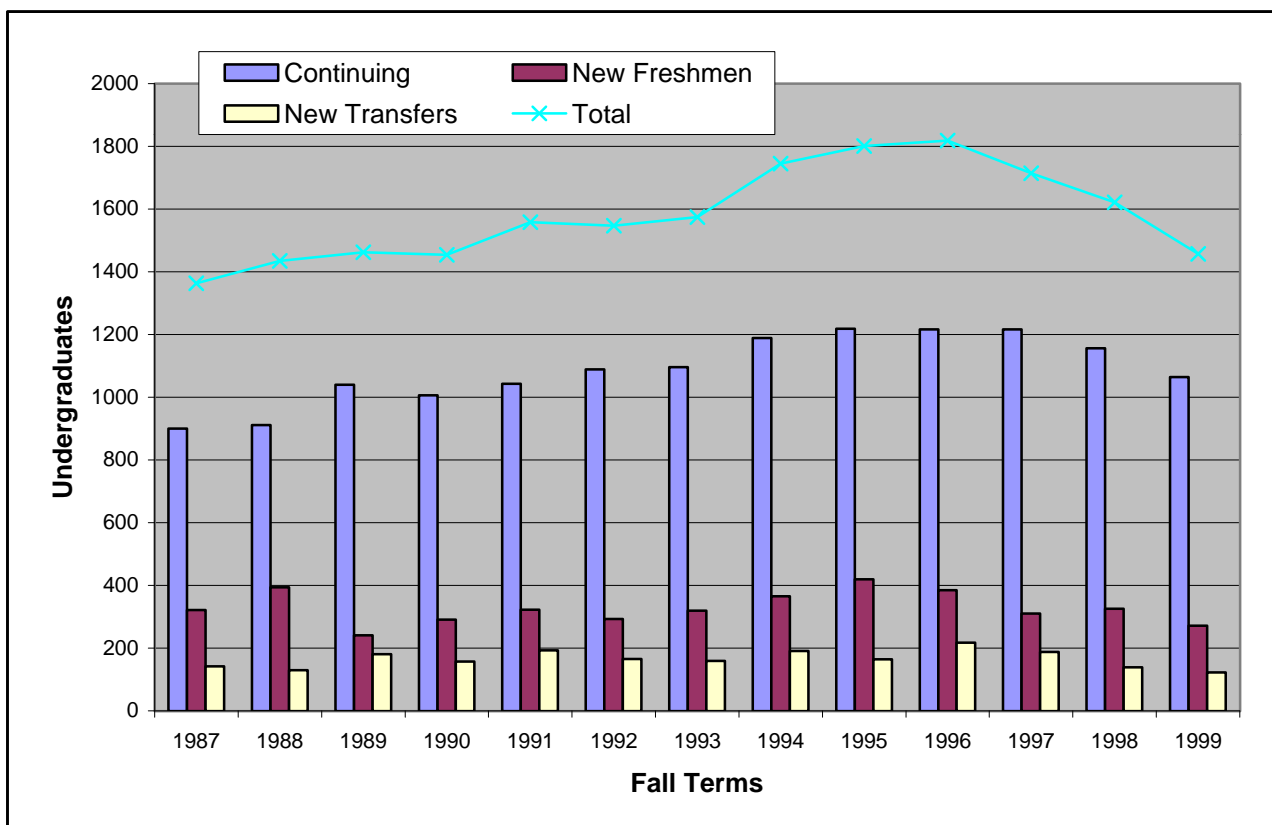
(d) Beginning with Fall 1996, "Recentered" SAT scores are in use.

(e) Beginning 1997, all full-time FTTIC=1 are included.

New Freshmen, Transfers, and Continuing Undergraduates, Fall 1987-1999

Year	Continuing		New Freshmen		New Transfers		Total	
	N	%	N	%	N	%	N	%
1987	900	66.0	321	23.6	142	10.4	1363	100.0
1988	911	63.5	394	27.5	130	9.1	1435	100.0
1989	1040	71.1	241	16.5	181	12.4	1462	100.0
1990	1006	69.2	291	20.0	157	10.8	1454	100.0
1991	1043	66.9	322	20.7	193	12.4	1558	100.0
1992	1089	70.4	293	18.9	165	10.7	1547	100.0
1993	1096	69.6	319	20.3	159	10.1	1574	100.0
1994	1189	68.1	365	20.9	191	10.9	1745	100.0
1995	1218	67.6	419	23.3	164	9.1	1801	100.0
1996	1216	66.9	385	21.2	217	11.9	1818	100.0
1997	1216	70.9	310	18.1	188	11.0	1714	100.0
1998	1156	71.3	326	20.1	139	8.6	1621	100.0
1999	1064	73.0	271	18.6	122	8.4	1457	100.0

SOURCE: CBM001 New Freshmen on this table are all shown as FTIC = 1 on CBM001, not Student Right To Know Cohorts.



New Freshmen and Transfer Undergraduates by County of Origin, Fall 1987-1999

Area/County	Fall 87		Fall 88		Fall 89		Fall 90		Fall 91		Fall 92		Fall 93		Fall 94		Fall 95		Fall 96		Fall 97		Fall 98		Fall 99	
	F	T	F	T	F	T	F	T	F	T	F	T	F	T	F	T	F	T	F	T	F	T	F	T	F	T
TOP 2 COUNTIES																										
Brewster	54	23	59	11	41	17	52	17	50	19	53	15	49	13	41	15	60	8	58	20	52	15	48	17	44	15
El Paso	32	10	62	11	27	29	29	18	43	22	44	15	33	18	50	41	29	24	31	20	21	26	19	9	16	5
TOTAL	86	33	121	22	68	46	81	35	93	41	97	30	82	31	91	56	89	32	89	40	73	41	67	26	60	20
CONTIGUOUS																										
Jeff Davis	7	6	7	2	4	5	14	4	8	2	14	4	8	0	5	1	7	4	11	6	7	4	11	3	6	2
Pecos	8	9	8	14	9	21	8	20	7	11	12	13	14	17	6	13	6	15	16	20	12	10	6	7	7	10
Presidio	19	4	21	1	10	4	17	4	14	4	15	7	31	1	27	5	24	4	33	4	20	5	28	4	21	9
Terrell	2	0	2	0	4	0	1	1	5	1	4	0	6	4	5	2	3	1	6	1	1	0	3	0	0	1
TOTAL	36	19	38	17	27	30	40	29	34	18	45	24	59	22	43	21	40	24	66	31	40	19	48	14	34	22
NEXT LAYER OUT																										
Andrews	1	1	3	0	1	0	0	0	1	1	1	0	0	0	2	2	1	0	1	3	5	1	1	2	0	0
Crane	5	1	0	5	1	0	2	2	1	0	2	0	1	0	3	2	2	2	0	2	0	2	1	2	4	0
Crockett	8	1	4	1	2	1	0	0	0	0	1	0	1	0	3	0	1	0	3	0	0	0	0	0	2	0
Culberson	4	3	6	0	4	0	6	3	12	4	13	2	3	1	16	1	13	3	12	3	22	4	12	2	6	3
Ector	9	12	5	5	7	5	0	7	4	12	4	8	7	2	7	6	7	6	0	5	4	12	2	7	5	4
Midland	4	5	9	3	3	6	6	3	6	5	2	5	9	5	6	5	6	4	4	4	3	6	5	3	5	2
Reeves	12	2	9	2	8	5	6	3	17	5	5	0	10	3	9	6	18	4	17	7	8	7	12	3	2	6
Upton	2	0	2	1	1	2	4	3	0	0	1	0	4	1	0	0	2	0	1	3	1	1	0	0	0	1
Val Verde	3	3	3	0	0	1	0	2	3	0	1	5	6	5	4	13	4	1	3	0	2	4	1	1	3	6
Ward	5	1	12	2	2	4	3	1	7	6	8	1	5	1	0	0	8	5	5	0	5	1	2	4	5	1
Winkler	3	0	4	0	2	1	1	1	1	3	3	2	0	1	5	3	2	1	6	3	4	1	2	1	2	1
TOTAL	56	29	57	19	31	25	28	25	52	36	41	23	46	19	55	38	64	26	52	30	54	39	38	25	34	24
ALL OTHERS (resident and non-resident)																										
Bexar	13	3	17	11	15	5	13	9	22	7	9	7	16	7	19	6	23	11	17	6	13	3	20	6	12	2
Dallas	7	4	8	2	4	4	2	5	0	0	1	3	3	3	2	2	15	3	7	3	8	1	2	1	1	0
Harris	11	3	6	3	7	2	4	4	11	1	2	4	12	6	8	8	25	9	17	14	8	2	4	1	10	5
Hidalgo	2	1	9	1	0	0	4	1	5	3	4	3	3	1	14	3	5	0	1	0	3	0	5	0	5	2
Tom Green	7	2	9	5	3	1	4	1	3	7	7	2	0	3	5	0	7	1	5	3	1	3	2	2	5	2
Travis	6	2	8	0	4	2	3	3	6	7	5	2	14	2	2	7	11	5	7	4	5	5	6	3	1	3
Others	97	46	121	50	82	66	112	45	96	73	82	67	84	65	126	50	140	53	124	86	105	75	134	61	109	42
TOTAL	143	61	178	72	115	80	142	68	143	98	110	88	132	87	176	76	226	82	178	116	143	89	173	74	143	56
GRAND TOTAL	321	142	394	130	241	181	291	157	322	193	293	165	319	159	365	191	419	164	385	217	310	188	326	139	271	122

A-5

F = new first-time freshmen (FTTIC=1) T = first-time transfers

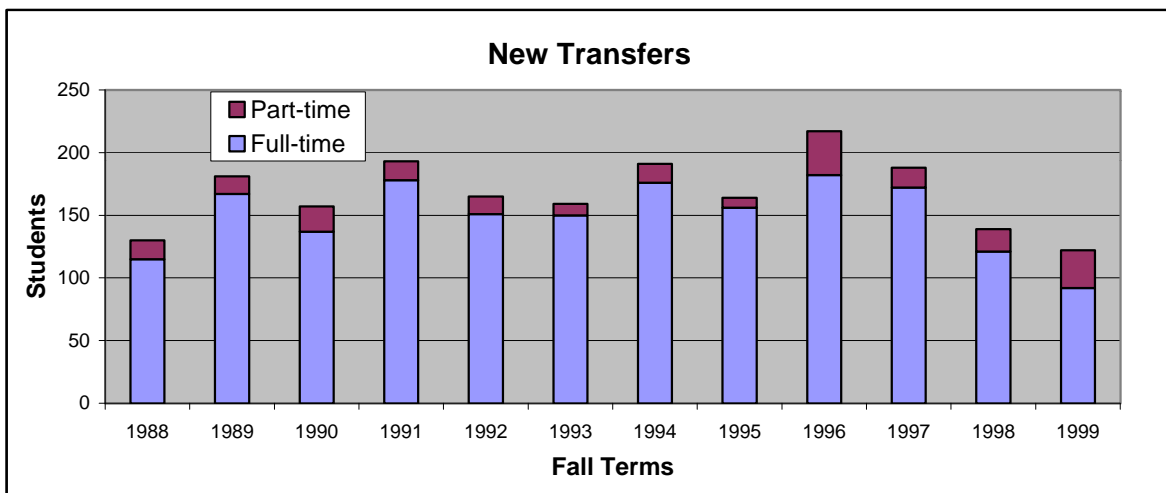
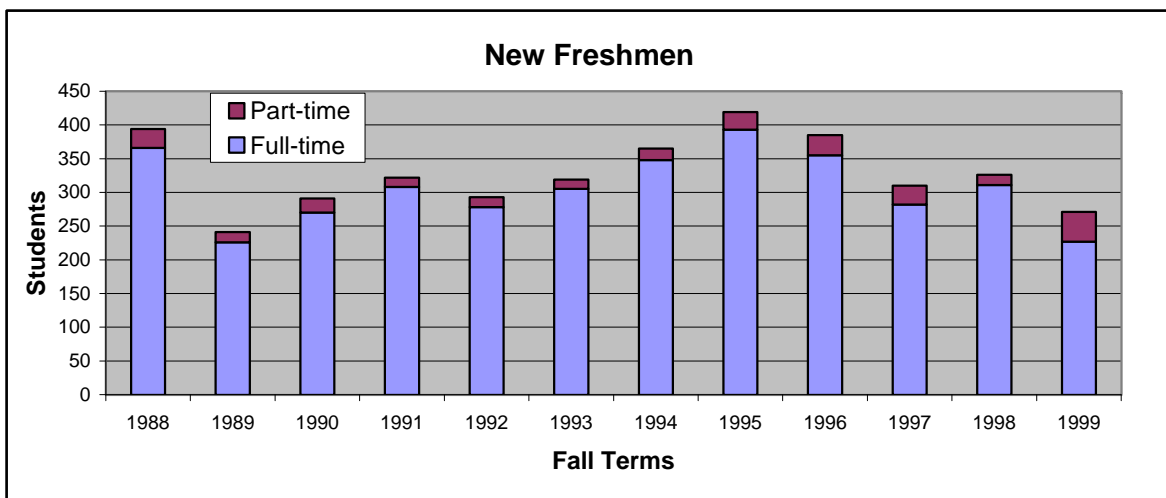
Source: CBM001. Differs slightly from SRK cohorts. In Fall '94 the definitons of FTTIC changed to include those entering in summer and enrolled in the Fall.

**New Freshmen and Transfer Undergraduates
by Full-time/Part-time Status, Fall 1988-1999**

Fall	NEW FRESHMEN				NEW TRANSFERS			
	Full-Time		Part-Time		Full-Time		Part-Time	
	N	%	N	%	N	%	N	%
1988	366	92.9	28	7.1	115	88.5	15	11.5
1989	226	93.8	15	6.2	167	92.3	14	7.7
1990	270	92.8	21	7.2	137	87.3	20	12.7
1991	308	95.7	14	4.3	178	92.2	15	7.8
1992	278	94.9	15	5.1	151	91.5	14	8.5
1993	305	95.6	14	4.4	150	94.3	9	5.7
1994	348	95.3	17	4.7	176	92.1	15	7.9
1995	393	93.8	26	6.2	156	95.1	8	4.9
1996	355	92.2	30	7.8	182	83.9	35	16.1
1997	282	91.0	28	9.0	172	91.5	16	8.5
1998	311	95.4	15	4.6	121	87.1	18	12.9
1999	227	83.8	44	16.2	92	75.4	30	24.6

Source: CBM001.

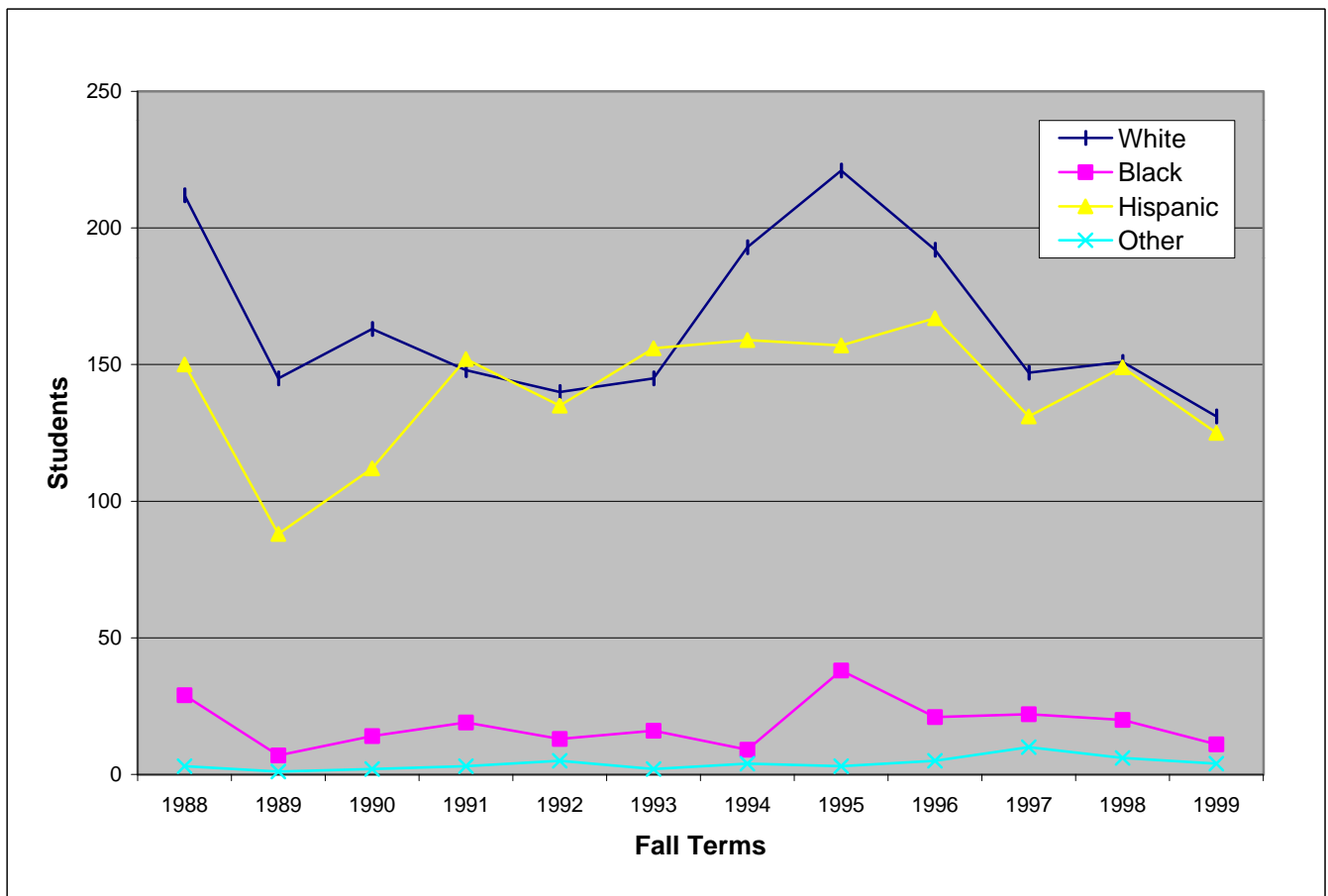
Full-time = 12 + hours (Freshmen are new first-time in college).



New Freshmen Undergraduates by Ethnicity, Fall 1988-1999

Fall	White		Black		Hispanic		Asian		Am. Indian		International	
	N	%	N	%	N	%	N	%	N	%	N	%
1988	212	53.8	29	7.4	150	38.1	2	0.5	1	0.3	0	0.0
1989	145	60.2	7	2.9	88	36.5	0	0.0	0	0.0	1	0.4
1990	163	56.0	14	4.8	112	38.5	0	0.0	2	0.7	0	0.0
1991	148	46.0	19	5.9	152	47.2	1	0.3	0	0.0	2	0.6
1992	140	47.8	13	4.4	135	46.1	3	1.0	1	0.3	1	0.3
1993	145	45.5	16	5.0	156	48.9	0	0.0	2	0.6	0	0.0
1994	193	52.9	9	2.5	159	43.6	1	0.3	2	0.5	1	0.3
1995	221	52.7	38	9.1	157	37.5	1	0.2	2	0.5	0	0.0
1996	192	49.9	21	5.5	167	43.4	1	0.3	3	0.8	1	0.3
1997	147	47.4	22	7.1	131	42.3	1	0.3	1	0.3	8	2.6
1998	151	46.3	20	6.1	149	45.7	2	0.6	4	1.2	0	0.0
1999	131	48.3	11	4.1	125	46.1	0	0.0	3	1.1	1	0.4

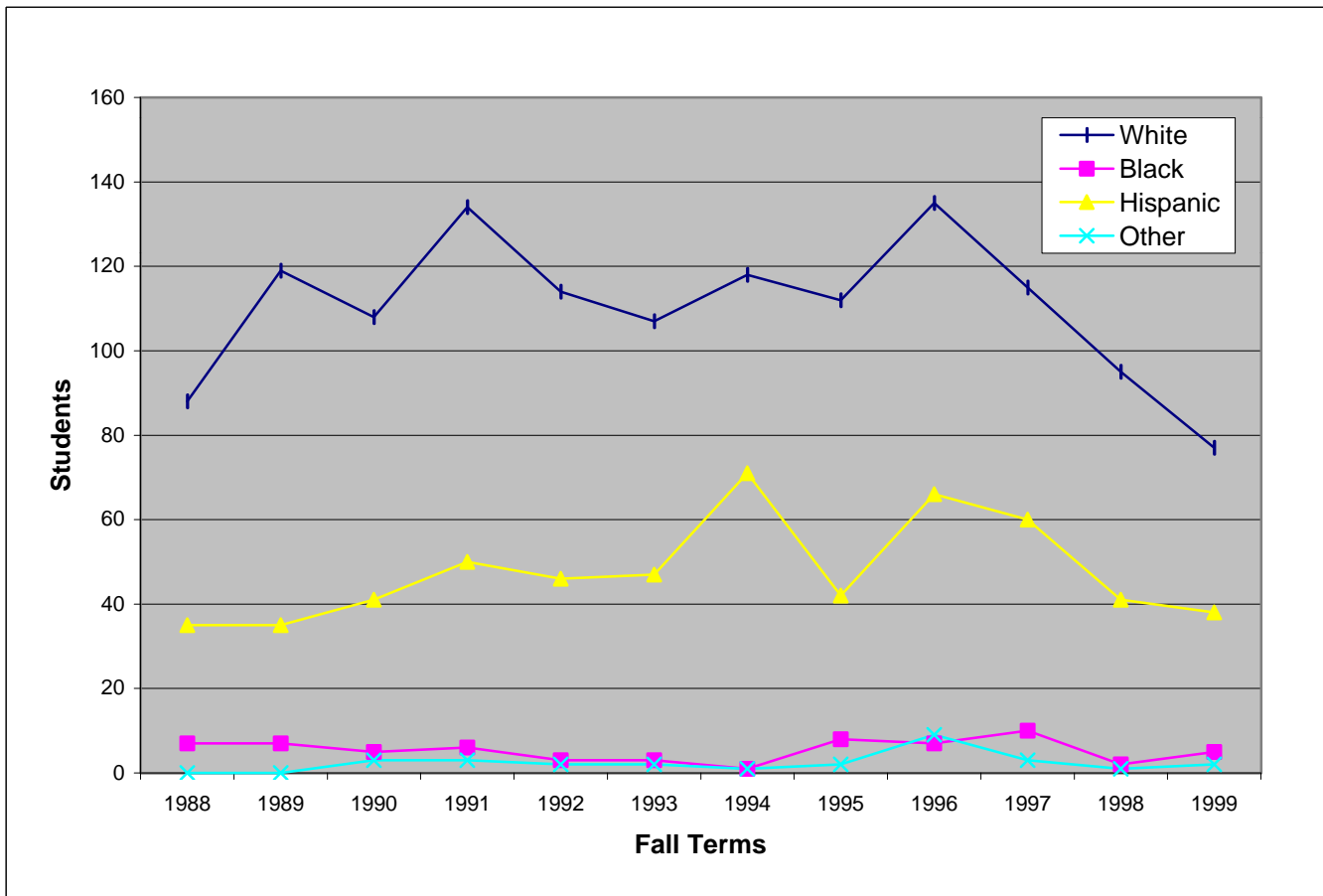
Source: CBM001



New Transfer Undergraduates by Ethnicity, Fall 1988-1999

Fall	White		Black		Hispanic		Asian		Am. Indian		International	
	N	%	N	%	N	%	N	%	N	%	N	%
1988	88	67.7	7	5.4	35	26.9	0	0.0	0	0.0	0	0.0
1989	119	65.8	7	5.4	35	26.9	0	0.0	0	0.0	0	0.0
1990	108	68.8	5	3.2	41	26.1	1	0.6	1	0.6	1	0.6
1991	134	69.4	6	3.1	50	25.9	0	0.0	1	0.5	2	1.0
1992	114	69.1	3	1.8	46	27.9	1	0.6	0	0.0	1	0.6
1993	107	67.3	3	1.9	47	29.6	0	0.0	1	0.6	1	0.6
1994	118	61.8	1	0.5	71	37.2	0	0.0	0	0.0	1	0.5
1995	112	68.3	8	4.9	42	25.6	0	0.0	0	0.0	2	1.2
1996	135	62.2	7	3.2	66	30.4	1	0.5	5	2.3	3	1.4
1997	115	61.2	10	5.3	60	31.9	2	1.1	0	0.0	1	0.5
1998	95	68.3	2	1.4	41	29.5	1	0.7	0	0.0	0	0.0
1999	77	63.1	5	4.1	38	31.1	1	0.8	1	0.8	0	0.0

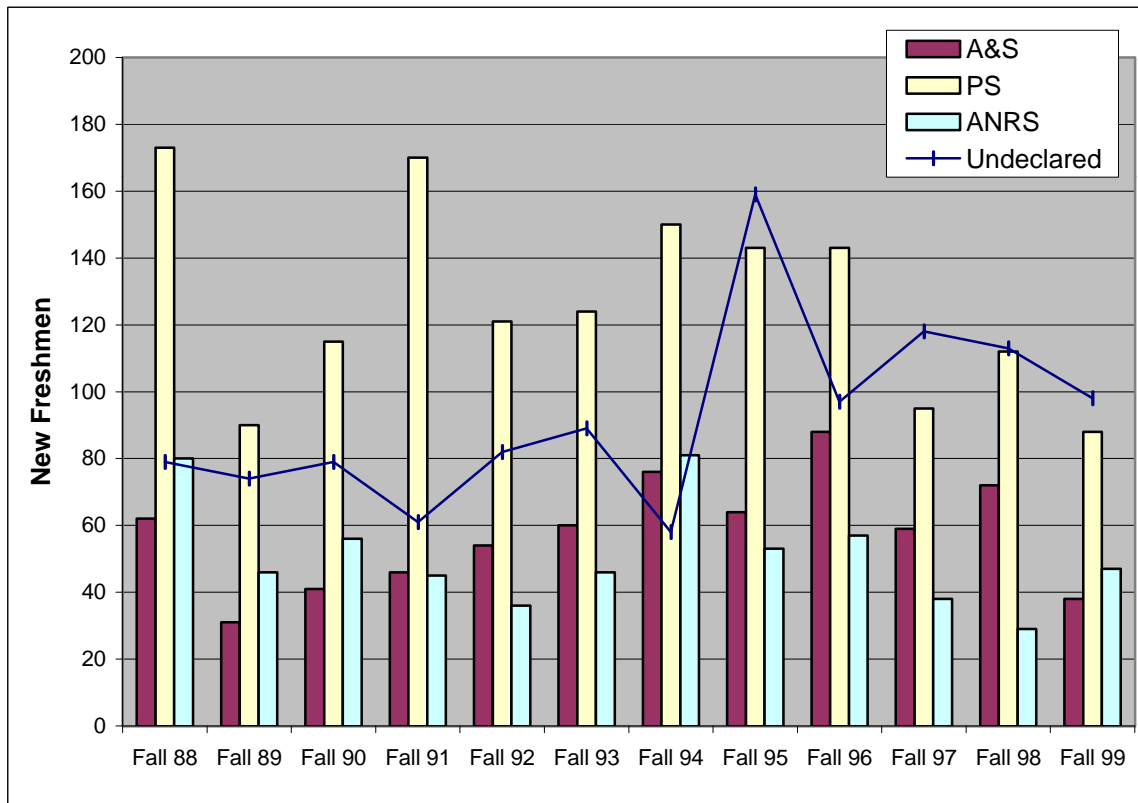
Source: CBM001



New Freshmen Undergraduates by School, Fall 1988-1999

	Undeclared		Arts & Sciences		Professional Studies		Ag & Natural Resource Sc		University Total	
	N	%	N	%	N	%	N	%	N	%
Fall 88	79	20	62	16	173	44	80	20	394	100
Fall 89	74	31	31	13	90	37	46	19	241	100
Fall 90	79	27	41	14	115	40	56	19	291	100
Fall 91	61	19	46	14	170	53	45	14	322	100
Fall 92	82	28	54	18	121	41	36	12	293	100
Fall 93	89	28	60	19	124	39	46	14	319	100
Fall 94	58	16	76	21	150	41	81	22	365	100
Fall 95	159	38	64	15	143	34	53	13	419	100
Fall 96	97	25	88	23	143	37	57	15	385	100
Fall 97	118	38	59	19	95	31	38	12	310	100
Fall 98	113	35	72	22	112	34	29	9	326	100
Fall 99	98	36	38	14	88	32	47	17	271	100

SOURCE: CBM001



New Freshmen Undergraduates by Major, Fall 1988-1999

Program, Major	1988	1989	1990	1991	1992	1993	1994	1995	1996	1997	1998	1999
AG & NATURAL RESOURCE SCIENCES												
Ag, General	8	4	7	2	3	5	6	4		1		
Equine Science	5	3	3	2	2	2	11	5	3	2	2	6
Wildlife Management	8	7	13	10	7	6	24	10				
Natural Resource Mgt.		4	2		1	1	1	3	9	7	12	11
Ag. Business	10	4	11	8	4	6	6	7	7	4	2	6
Farrrier Technology	2	1			2	2	1	1	4	2	1	1
Range Management	9		2	2	1	4	2	3				
Veterinary Tech	8	1	1	2	3	6	3	3	5	2		9
Pre-Vet	10	12	10	11	3	6	13	11	6	5	4	7
Forestry							1					
Meat Ind. Mgt, Tech	2	3		1	2		2	1	3	1	1	1
Animal Science	17	7	4	7	5	8	8	4	19	14	7	6
Agriculture Education			1		1		1					
Animal Health Mgt.	1		2		2		2	1	1			
TOTAL	80	46	56	45	36	46	81	53	57	38	29	47
ARTS & SCIENCES												
Biology	1	2	4	5	4	6	9	10	13	7	6	3
Art	2	2	6	6	2	4	3	2	4	2	3	1
Music, General	2					3	1	2	1	1	4	
Music, Instrumental	2											
Music, Vocal		1			2	1						
Theatre	2		1	4	1	2	2	1	6	3	2	4
English	3	2	6	1	2	2	3		2	2	3	1
Communication	7	2	3	5	8	6	4	7	4	6	3	
Computer Science								7	11	9	16	7
Math & Pre-Engineer.	6	3	4	6	8	5	10	5	4		11	1
Chemistry	1	2		2	3	4	1	3	3	1		
Geology	3	2	4	2		2	1		2	1	1	3
Psychology	11	3	5	6	8	8	16	11	7	5	4	6
Social Science	1				1	3		1	2		1	1
History	2	2	1	1			2	3	5	2	3	2
Political Science	4	1	3	2	3	3	2		2	1		1
Spanish	2			1			1	1	1		1	
Environmental Sc.								2	3			
Pre-Dental											2	6
Pre-Law	9	1	2	3	3	3	7	5	3	5	5	
Pre-Med, Pre-Nursing	4	8	1	2	8	8	12	4	13	14	6	2
Pre-Pharmacy			1		1		2		2			
TOTAL	62	31	41	46	54	60	76	64	88	59	71	38

(continued on next page)

New Freshmen Undergraduates by Major, Fall 1988-1999 (cont.)

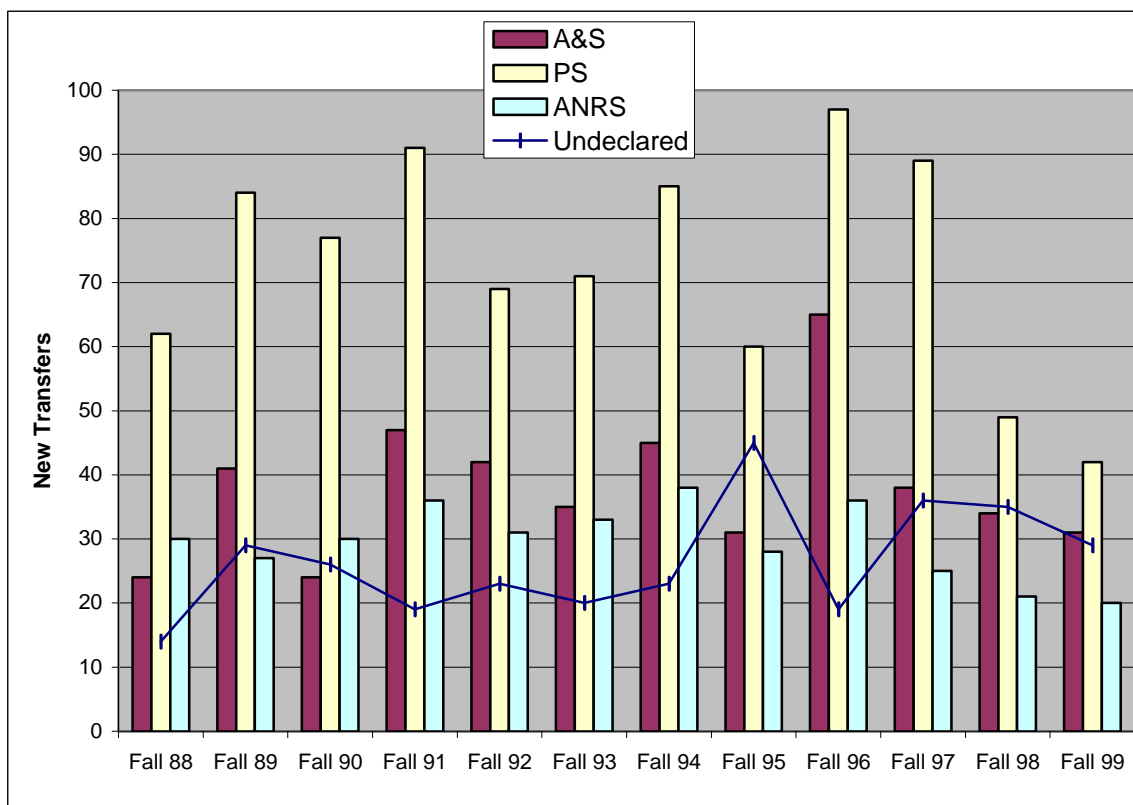
Program, Major	1988	1989	1990	1991	1992	1993	1994	1995	1996	1997	1998	1999
PROFESSIONAL STUDIES												
Business General	28	17	11	19	12	20	16	19	22	1		
Accounting	11	4	7	7	8	7	9	4	4	4	3	4
Finance	2	1	3			1	1	1				
Management	9		3	5	6	5	11	2	3	17	20	15
Marketing	1	2	3	5	1		1	2				
Office Systems	4	4	5	6		2	2		8	1		2
Business Education	1			1	1		1					
Education, General	10	12	6	12	13	9	19	21				
Education, Elementary	20	13	4	6	21	12	9	10	23	21	26	
Education, Secondary		1			1	1		2				
Physical Education	37	17	23	40	13	23	32	26	40	26	36	22
Education, Reading	1											
Education, Ind. Arts								4				
Industrial Technology	10	5	9	11	4	3	7	3	3	3	2	5
Criminal Justice	33	14	32	51	30	36	33	43	36	17	25	14
Lic. Voc. Nursing	6		9	7	11	5	7	2				2
Physical Therapy							2	4	4	5	1	
Interdisciplinary Studies												24
TOTAL	173	90	115	170	121	124	150	143	143	95	113	88
Undeclared Major	79	74	79	61	82	89	58	159	97	118	113	98
UNIVERSITY TOTAL	394	241	291	322	293	319	365	419	385	310	326	271

Source: CBM001 Reports

New Transfer Undergraduates by School, Fall 1988-1999

	Undeclared		Arts & Sciences		Professional Studies		Ag & Natural Resource Sc		University Total	
	N	%	N	%	N	%	N	%	N	%
Fall 88	14	11	24	18	62	48	30	23	130	100
Fall 89	29	16	41	23	84	46	27	15	181	100
Fall 90	26	17	24	15	77	49	30	19	157	100
Fall 91	19	10	47	24	91	47	36	19	193	100
Fall 92	23	14	42	25	69	42	31	19	165	100
Fall 93	20	13	35	22	71	45	33	21	159	100
Fall 94	23	12	45	24	85	45	38	20	191	100
Fall 95	45	27	31	19	60	37	28	17	164	100
Fall 96	19	9	65	30	97	45	36	17	217	100
Fall 97	36	19	38	20	89	47	25	13	188	100
Fall 98	35	25	34	24	49	35	21	15	139	100
Fall 99	29	24	31	25	42	34	20	16	122	100

SOURCE: CBM001



New Transfer Undergraduates by Major, Fall 1988-1999

Program, Major	1988	1989	1990	1991	1992	1993	1994	1995	1996	1997	1998	1999
AG & NATURAL RESOURCE SCIENCES												
Ag, General		2	1		3	1	3	6				
Equine Science	5	3	2	1	3	5	2	2	3	2	2	1
Wildlife Management	7	5	7	11	4	7	8	4				
Natural Resource Mgt.			1		1			3	5	5	3	3
Agric. Business	4	7	5	5	6	7	11	3	6	2	3	4
Range Management	2		1	3	2	2	1	2				
Meat Tech/Mgt.			2	3	3	1	1		1		1	
Farrier Technology	1	2	1		1			1	1			
Veterinary Tech	2				3	1	2	1	2	6	5	2
Pre-Vet	3	4	6	6	2	3	2	2	3	2	1	2
Animal Health Mgt	1	3		1			4	1	3			
Animal Science	5	1	3	6	3	6	4	3	12	8	6	8
Ag Education			1									
TOTAL	30	27	30	36	31	33	38	28	36	25	21	20
ARTS & SCIENCES												
Art	2	1		3	3	3	3	1		1	6	
Biology	5	3	2	9	4	5	11	7	11	2	3	3
Chemistry		1			1	2		1				2
Geology	4	1	3	1	1	5	3	2	3	2		5
Psychology	3	8	6	6	7	6	9	2	3	2	4	8
History	3	3	3	4	3	2	1	1	1	3	4	5
Political Science	2	2		2	4	1	2	3	5	1	1	
Music	1			1				1	2		1	
English	2	1	3	5	7		7	2	4	3	1	1
Communication		6	3	3	4	1	2	2	8	1	2	1
Math & Pre-Engineer.	1	2	2	7	1	2	1	1	8	3	3	
Spanish		1		2	2	1	1		1	1		
Social Science	1	2	1			1				1	2	
Pre-Law		5		2		1	1		3	2		2
Pre-Dentistry												
Pre-Med/Pre-Nursing		4	1	2	2	5	2	1	8	5	6	2
Pre-Pharmacy		1					1		1			
Theatre					3		1			4		
Environmental Sc.								2		5		
Computer Science								5	7	2	1	2
TOTAL	24	41	24	47	42	35	45	31	65	38	34	31

(continued on next page)

New Transfer Undergraduates by Major, Fall 1988-1999 (cont.)

Program, Major	1988	1989	1990	1991	1992	1993	1994	1995	1996	1997	1998	1999
PROFESSIONAL STUDIES												
Business, General	4	12	5	14	10	7	6	6	5	1		
Accounting	3	3	5	2	3	2	1		6		2	1
Management	1	4	4	2	2	1	6		6	17	4	6
Marketing	4		1	1	1	2	1		1			
Office Systems					1	4		1	3	1	1	
Finance	1		1		1		1	2				
Business Education	2		1	1								
Education, General	10	10	10	11	6	7	7	14				
Education, Elem.	8	16	10	15	7	5	11	11	31	28	15	
Education, Sec.	1	1		2		1	1					
Education, Reading				1								
Physical Ed./Therapy	16	16	18	21	14	24	27	10	24	18	18	8
Industrial Technology	5	4		1	2		4	3	2	1	1	
Criminal Justice	7	18	18	17	21	13	20	10	19	23	8	11
Lic. Voc. Nursing			4	3	1	5		3				
Interdisciplinary Stu.												16
TOTAL	62	84	77	91	69	71	85	60	97	89	49	42
Undeclared Major	14	29	26	19	23	20	23	45	19	36	35	29
UNIVERSITY TOTAL	130	181	157	193	165	159	191	164	217	188	139	122

Source: CBM001 Reports