

# SECTION C

# CURRICULUM

Fact Book 2000  
Sul Ross State University

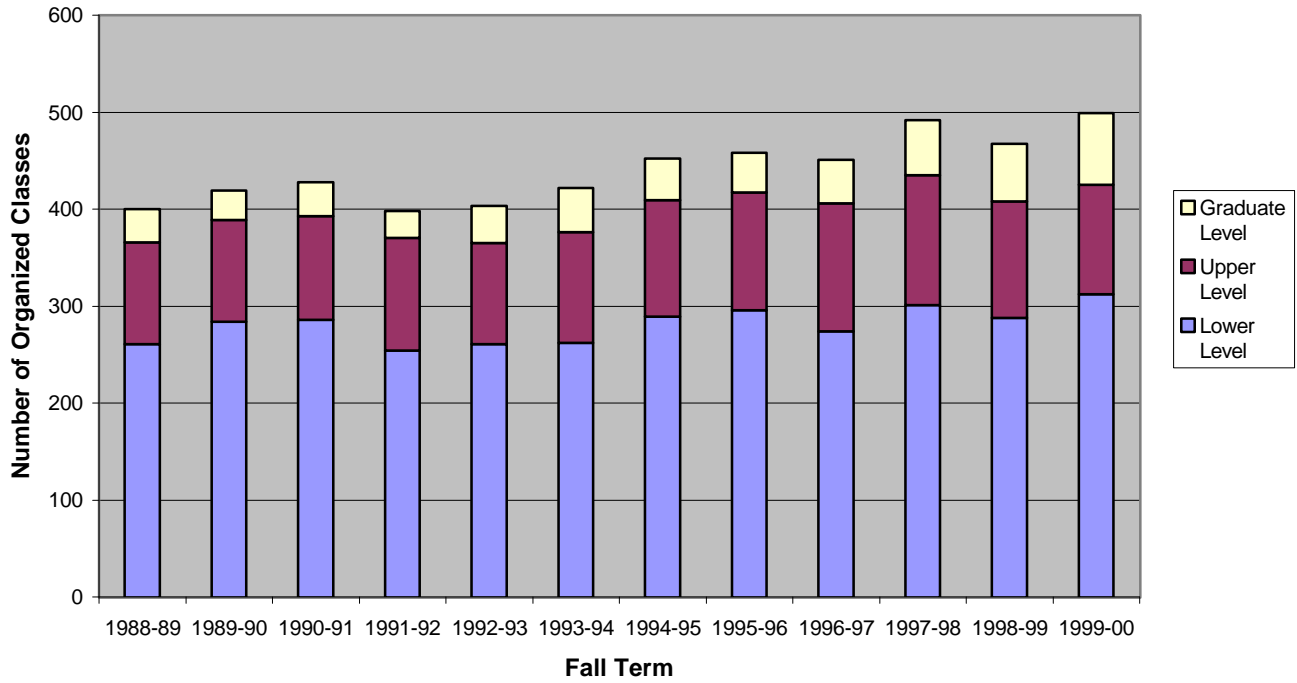
# **SECTION C**

## **CURRICULUM**

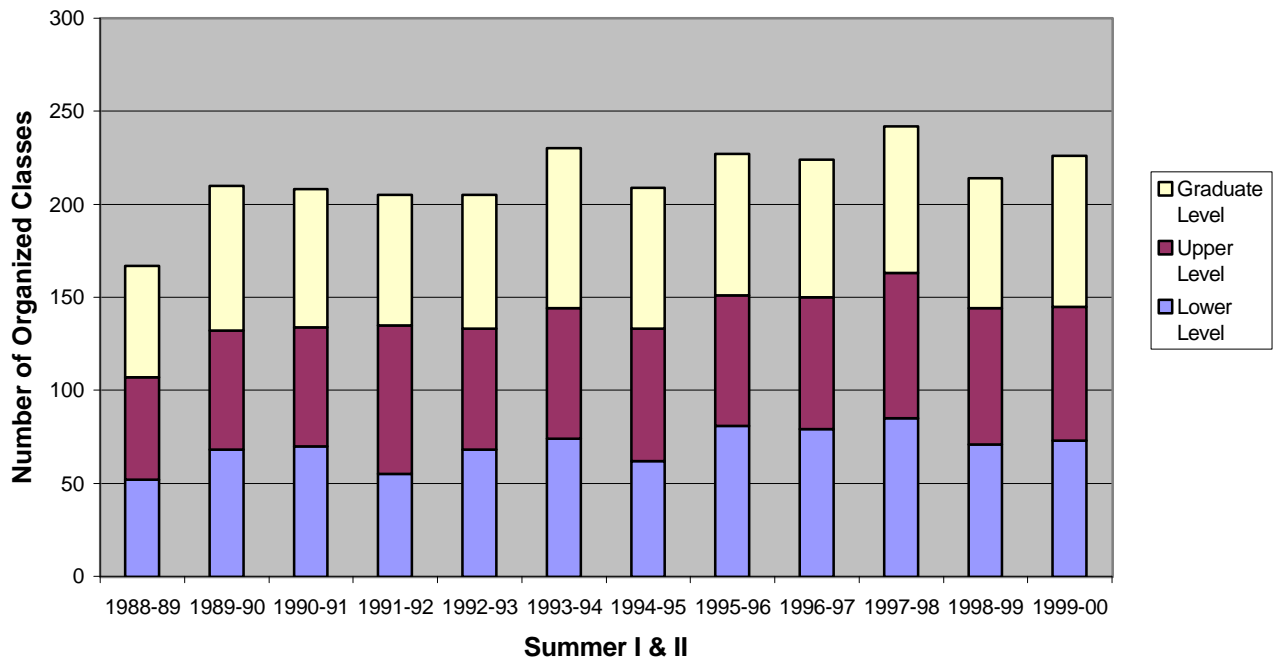
### **TABLE OF CONTENTS**

1. Organized Classes by Level, 1988-1999 (charts)
2. Organized Classes by Semester and Level, 1988-1999 (table)
3. Organized Classes by Semester and Level, 1988-1999 (table cont.)
4. Total Semester Credit Hours, 1984-1999
5. Semester Credit Hours, 1985-1986
6. Semester Credit Hours, 1986-1987
7. Semester Credit Hours, 1987-1988
8. Semester Credit Hours, 1988-1989
9. Semester Credit Hours, 1989-1990
10. Semester Credit Hours, 1990-1991
11. Semester Credit Hours, 1991-1992
12. Semester Credit Hours, 1992-1993
13. Semester Credit Hours, 1993-1994
14. Semester Credit Hours, 1994-1995
15. Semester Credit Hours, 1995-1996
16. Semester Credit Hours, 1996-1997
17. Semester Credit Hours, 1997-1998
18. Semester Credit Hours, 1998-1999
19. Semester Credit Hours, 1999-2000
20. Undergraduate Enrollment by School, Fall 1986-1999
21. Undergraduate Enrollment by Major, Fall 1988-1999
22. Undergraduate Enrollment by Major, Fall 1988-1999 (cont.)
23. Graduate Enrollment by School, Fall 1986-1999
24. Graduate Enrollment by Major, Fall 1988-1999
25. Graduate Enrollment by Major, Fall 1988-1999 (cont.)
26. Degrees Awarded by Level, FY 1988-1999
27. Certificates and Associate's Degrees Awarded by Program, FY 1988-1999
28. Bachelor's Degrees Awarded by Program, FY 1988-1999
29. Bachelor's Degrees Awarded by Program, FY 1988-1999 (cont.)
30. Master's Degrees Awarded by Program, FY 1988-1999
31. Master's Degrees Awarded by Program, FY 1988-1999 (cont.)

### Organized Classes by Level, Fall 1988-1999



### Organized Classes by Level, Summer 1988-1999



## Organized Classes by Semester and Level, 1988-1999

	Lower Level	Upper Level	Graduate Level	Total Classes	Total Enrolled	Average Enrolled
<b>1999-00</b>	<b>640</b>	<b>362</b>	<b>232</b>	<b>1234</b>	<b>19472</b>	<b>15.8</b>
Fall	312	113	74	499	8657	17.3
Spring	255	177	77	509	8096	15.9
Sum I	41	41	41	123	1479	12.2
Sum II	32	31	40	103	1240	12.3
<b>1998-99</b>	<b>612</b>	<b>365</b>	<b>192</b>	<b>1169</b>	<b>20752</b>	<b>17.8</b>
Fall	288	120	59	467	9298	19.9
Spring	253	172	63	488	8512	17.4
Sum I	34	41	43	118	1606	13.6
Sum II	37	32	27	96	1336	13.9
<b>1997-98</b>	<b>637</b>	<b>378</b>	<b>191</b>	<b>1206</b>	<b>22380</b>	<b>18.6</b>
Fall	301	134	57	492	9864	20.0
Spring	251	166	55	472	9038	19.1
Sum I	46	47	45	138	2027	14.7
Sum II	39	31	34	104	1451	14.0
<b>1996-97</b>	<b>615</b>	<b>359</b>	<b>173</b>	<b>1147</b>	<b>23419</b>	<b>20.4</b>
Fall	274	132	45	451	10424	23.1
Spring	262	156	54	472	9477	20.1
Sum I	46	34	41	121	1954	16.1
Sum II	33	37	33	103	1564	15.2
<b>1995-96</b>	<b>644</b>	<b>358</b>	<b>162</b>	<b>1164</b>	<b>24365</b>	<b>20.9</b>
Fall	296	121	41	458	10709	23.4
Spring	267	167	45	479	10072	21.0
Sum I	47	36	43	126	1969	15.6
Sum II	34	34	33	101	1615	16.0
<b>1994-95</b>	<b>606</b>	<b>352</b>	<b>164</b>	<b>1122</b>	<b>23751</b>	<b>21.2</b>
Fall	289	120	43	452	10390	23.0
Spring	255	161	45	461	9759	21.2
Sum I	38	34	44	116	2038	17.6
Sum II	24	37	32	93	1564	16.8

(continued on next page)

## Organized Classes by Semester and Level, 1988-1999 (cont.)

	Lower Level	Upper Level	Graduate Level	Total Classes	Total Enrolled	Average Enrolled
<b>1993-94</b>	<b>573</b>	<b>349</b>	<b>177</b>	<b>1099</b>	<b>22793</b>	<b>20.7</b>
Fall	262	114	46	422	9421	22.3
Spring	237	165	45	447	9340	20.9
Sum I	37	42	47	126	2254	17.9
Sum II	37	28	39	104	1778	17.1
<b>1992-93</b>	<b>560</b>	<b>310</b>	<b>153</b>	<b>1023</b>	<b>21737</b>	<b>21.2</b>
Fall	261	104	38	403	9166	22.7
Spring	231	141	43	415	8716	21.0
Sum I	40	33	38	111	2128	19.2
Sum II	28	32	34	94	1727	18.4
<b>1991-92</b>	<b>529</b>	<b>349</b>	<b>134</b>	<b>1012</b>	<b>21523</b>	<b>21.3</b>
Fall	254	116	28	398	9025	22.7
Spring	220	153	36	409	8740	21.4
Sum I	31	40	39	110	2114	19.2
Sum II	24	40	31	95	1644	17.3
<b>1990-91</b>	<b>614</b>	<b>304</b>	<b>145</b>	<b>1063</b>	<b>20568</b>	<b>19.3</b>
Fall	286	107	35	428	8808	20.6
Spring	258	133	36	427	8223	19.3
Sum I	38	39	43	120	2061	17.2
Sum II	32	25	31	88	1476	16.8
<b>1989-90</b>	<b>598</b>	<b>303</b>	<b>145</b>	<b>1046</b>	<b>21237</b>	<b>20.3</b>
Fall	284	105	30	419	9240	22.1
Spring	246	134	37	417	8384	20.1
Sum I	35	40	43	118	2046	17.3
Sum II	33	24	35	92	1567	17.0
<b>1988-89</b>	<b>543</b>	<b>288</b>	<b>126</b>	<b>957</b>	<b>20424</b>	<b>21.3</b>
Fall	261	105	34	400	8857	22.1
Spring	230	128	32	390	8107	20.8
Sum I	28	36	31	95	1938	20.4
Sum II	24	19	29	72	1522	21.1

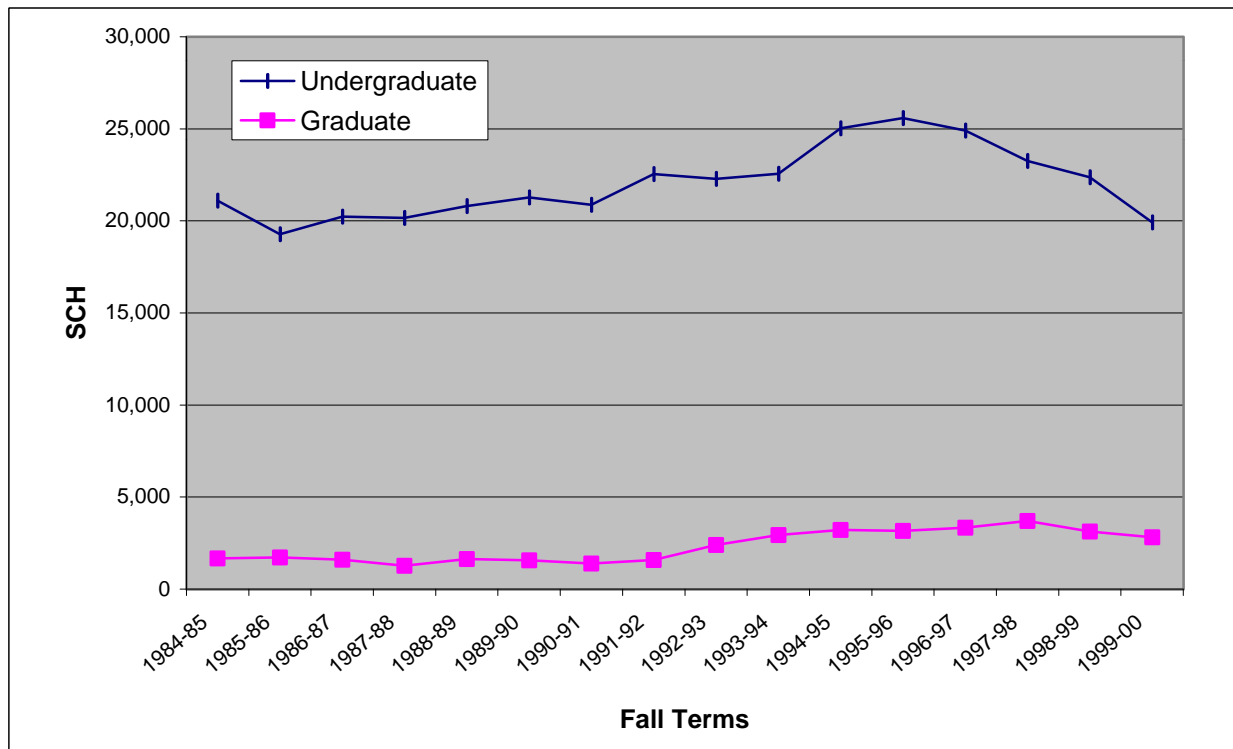
---

Source: Curriculum Reports

**Total Semester Credit Hours, 1984-1999**

	UNDERGRADUATE					GRADUATE				
	Fall	Spring	Sum 1	Sum 2	Total	Fall	Spring	Sum 1	Sum 2	Total
1984-85	21093	19681	3431	2439	46644	1673	1740	2515	2398	8326
1985-86	19272	18461	3628	2581	43942	1716	1758	2273	1669	7416
1986-87	20236	18560	3076	1981	43853	1594	1515	2024	1451	6584
1987-88	20164	18927	3355	2127	44573	1271	1394	1953	1752	6370
1988-89	20813	19632	3949	2481	46875	1630	1341	2169	1920	7060
1989-90	21280	19785	3864	3001	47930	1572	1591	2178	1671	7012
1990-91	20883	20161	4013	2961	48018	1382	1546	2160	1434	6522
1991-92	22541	21530	4337	3243	51651	1590	1945	2157	1692	7384
1992-93	22281	20785	4227	3220	50513	2396	2806	2184	1847	9233
1993-94	22566	21606	4713	3622	52507	2937	3673	2679	2106	11395
1994-95	25032	22722	4043	3040	54837	3214	3660	2224	1765	10863
1995-96	25582	23357	4089	3228	56256	3160	3677	2073	1576	10486
1996-97	24903	22248	3926	3195	54272	3339	4008	2068	1582	10997
1997-98	23260	21326	4068	2944	51598	3703	3900	1916	1540	11059
1998-99	22377	20002	3566	2968	48913	3128	3278	1485	1177	9068
1999-00	19919	18960	3070	2395	44344	2812	3236	1419	1331	8798

SOURCE: Curriculum Reports



Semester Credit Hours, 1985-86

	FALL				SPRING				SUMMER I				SUMMER II				FY
	Lower	Upper	Grad	Total	Lower	Upper	Grad	Total	Lower	Upper	Grad	Total	Lower	Upper	Grad	Total	Total
BEHAV & SOC SCIENCES	2487	297	174	2958	2082	567	234	2883	345	96	258	699	306	108	189	603	7143
Geography	150	3	0	153	144	0	0	144	0	0	0	0	69	0	0	69	366
History	771	135	57	963	648	198	81	927	120	36	129	285	63	27	66	156	2331
Philosophy	105	0	0	105	0	0	0	0	0	0	0	0	0	0	0	0	105
Political Science	708	72	117	897	795	114	117	1026	126	36	90	252	81	39	57	177	2352
Psychology	645	87	0	732	417	198	0	615	99	0	0	99	36	39	0	75	1521
Sociology	108	0	0	108	78	57	36	171	0	24	39	63	57	3	66	126	468
BIOLOGY	972	242	78	1292	1288	264	54	1606	156	132	42	330	48	45	3	96	3324
CHEMISTRY	380	186	0	566	352	128	0	480	40	35	0	75	0	108	9	117	1238
FINE ARTS & COMM	952	556	87	1595	808	645	99	1552	64	200	131	395	19	164	88	271	3813
Art	183	204	60	447	201	159	66	426	0	108	30	138	0	69	45	114	1125
Communication	217	233	27	477	221	249	30	500	42	30	6	78	1	36	18	55	1110
Fine Arts	279	0	0	279	324	0	0	324	0	0	0	0	0	0	0	0	603
Journalism	2	33	0	35	4	0	0	4	0	0	0	0	0	0	0	0	39
Music	234	65	0	299	54	153	0	207	21	6	50	77	16	17	10	43	626
Theatre	37	21	0	58	4	84	3	91	1	56	45	102	2	42	15	59	310
GEOLOGY	232	274	148	654	191	193	138	522	0	84	45	129	40	3	57	100	1405
LANGUAGES & LIT	2106	486	48	2640	1697	648	45	2390	322	144	84	550	391	78	105	574	6154
English	1845	408	48	2301	1407	531	45	1983	222	126	84	432	309	60	105	474	5190
Spanish	261	78	0	339	290	117	0	407	100	18	0	118	82	18	0	100	964
MATHEMATICS	1937	166	30	2133	1798	183	33	2014	231	57	39	327	222	48	0	270	4744
Astronomy	40	0	0	40	0	0	0	0	0	0	0	0	0	0	0	0	40
Computer Science	315	18	0	333	366	48	0	414	102	9	0	111	0	3	0	3	861
Mathematics	1478	148	30	1656	1356	135	33	1524	129	48	39	216	222	45	0	267	3663
Physics	104	0	0	104	76	0	0	76	0	0	0	0	0	0	0	0	180
<b>ARTS &amp; SCIENCES TOTAL</b>	<b>9066</b>	<b>2207</b>	<b>565</b>	<b>11838</b>	<b>8216</b>	<b>2628</b>	<b>603</b>	<b>11447</b>	<b>1158</b>	<b>748</b>	<b>599</b>	<b>2505</b>	<b>1026</b>	<b>554</b>	<b>451</b>	<b>2031</b>	<b>27821</b>
BUSINESS ADMIN	1194	1089	321	2604	1017	1092	306	2415	129	306	99	534	78	336	78	492	6045
Business	969	1089	321	2379	885	1092	306	2283	129	306	72	507	78	336	45	459	5628
Economics	225	0	0	225	132	0	0	132	0	0	27	27	0	0	33	33	417
CRIMINAL JUSTICE	471	165	0	636	243	309	0	552	60	273	0	333	0	84	0	84	1605
EDUCATION	168	684	663	1515	42	1062	627	1731	0	294	1275	1569	0	132	957	1089	5904
INDUSTRIAL TECHNOLOGY	363	225	15	603	309	318	12	639	0	84	36	120	0	111	15	126	1488
PHYSICAL EDUCATION	1185	357	63	1605	1004	294	93	1391	162	78	168	408	103	81	93	277	3681
VOCATIONAL NURSING	168	0	0	168	176	0	0	176	120	0	0	120	0	0	0	0	464
<b>PROF STUDIES TOTAL</b>	<b>3549</b>	<b>2520</b>	<b>1062</b>	<b>7131</b>	<b>2791</b>	<b>3075</b>	<b>1038</b>	<b>6904</b>	<b>471</b>	<b>1035</b>	<b>1578</b>	<b>3084</b>	<b>181</b>	<b>744</b>	<b>1143</b>	<b>2068</b>	<b>19187</b>
<b>RAS</b>	<b>1212</b>	<b>718</b>	<b>89</b>	<b>2019</b>	<b>807</b>	<b>944</b>	<b>117</b>	<b>1868</b>	<b>0</b>	<b>216</b>	<b>96</b>	<b>312</b>	<b>0</b>	<b>76</b>	<b>75</b>	<b>151</b>	<b>4350</b>
<b>Alpine Campus TOTALS:</b>	<b>13827</b>	<b>5445</b>	<b>1716</b>	<b>20988</b>	<b>11814</b>	<b>6647</b>	<b>1758</b>	<b>20219</b>	<b>1629</b>	<b>1999</b>	<b>2273</b>	<b>5901</b>	<b>1207</b>	<b>1374</b>	<b>1669</b>	<b>4250</b>	<b>51358</b>

C-5

Semester Credit Hours, 1986-87

	FALL				SPRING				SUMMER I				SUMMER II				FY
	Lower	Upper	Grad	Total	Lower	Upper	Grad	Total	Lower	Upper	Grad	Total	Lower	Upper	Grad	Total	Total
BEHAV & SOC SCIENCES	2523	318	192	3033	2604	429	159	3192	306	156	156	618	264	27	129	420	7263
Geography	153	0	0	153	174	3	0	177	66	0	0	66	0	0	0	0	396
History	879	81	45	1005	894	120	12	1026	93	30	78	201	45	0	15	60	2292
Philosophy	42	0	0	42	102	0	0	102	0	0	0	0	0	0	0	0	144
Political Science	708	96	99	903	786	126	144	1056	99	48	78	225	138	12	30	180	2364
Psychology	648	87	48	783	429	180	0	609	48	54	0	102	81	9	0	90	1584
Sociology	93	54	0	147	219	0	3	222	0	24	0	24	0	6	84	90	483
BIOLOGY	948	297	114	1359	1140	218	108	1466	88	183	60	331	0	108	27	135	3291
CHEMISTRY	368	149	0	517	232	202	0	434	84	3	0	87	32	63	0	95	1133
FINE ARTS & COMM	1105	442	112	1659	874	587	92	1553	74	209	92	375	12	149	110	271	3858
Art	210	147	99	456	126	243	60	429	54	90	54	198	0	51	84	135	1218
Communication	405	183	3	591	349	193	21	563	0	79	15	94	0	42	15	57	1305
Fine Arts	261	0	0	261	297	0	0	297	0	0	0	0	0	0	0	0	558
Journalism	4	30	0	34	3	12	0	15	0	0	0	0	0	0	0	0	49
Music	176	27	4	207	97	93	2	192	20	3	23	46	12	12	11	35	480
Theatre	49	55	6	110	2	46	9	57	0	37	0	37	0	44	0	44	248
GEOLOGY	188	112	139	439	224	97	139	460	0	24	63	87	0	48	21	69	1055
LANGUAGES & LIT	2203	492	48	2743	1624	636	54	2314	224	33	75	332	232	123	45	400	5789
English	1911	402	48	2361	1470	546	54	2070	120	3	75	198	156	123	45	324	4953
Spanish	292	90	0	382	154	90	0	244	104	30	0	134	76	0	0	76	836
MATHEMATICS	2008	227	0	2235	1768	93	0	1861	153	39	0	192	105	0	0	105	4393
Astronomy	0	0	0	0	0	0	0	0	0	0	0	0	0	0	0	0	0
Computer Science	420	27	0	447	375	33	0	408	0	0	0	0	0	0	0	0	855
Mathematics	1496	200	0	1696	1333	60	0	1393	153	39	0	192	105	0	0	105	3386
Physics	92	0	0	92	60	0	0	60	0	0	0	0	0	0	0	0	152
<b>ARTS &amp; SCIENCES TOTAL</b>	<b>9343</b>	<b>2037</b>	<b>605</b>	<b>11985</b>	<b>8466</b>	<b>2262</b>	<b>552</b>	<b>11280</b>	<b>929</b>	<b>647</b>	<b>446</b>	<b>2022</b>	<b>645</b>	<b>518</b>	<b>332</b>	<b>1495</b>	<b>26782</b>
BUSINESS ADMIN	1506	1326	228	3060	885	1461	174	2520	261	273	84	618	135	276	69	480	6678
Business	1284	1308	228	2820	723	1455	174	2352	138	222	39	399	135	276	36	447	6018
Economics	222	18	0	240	162	6	0	168	123	51	45	219	0	0	33	33	660
CRIMINAL JUSTICE	549	174	0	723	351	348	0	699	84	153	0	237	0	54	0	54	1713
EDUCATION	0	1164	624	1788	0	951	615	1566	0	105	1215	1320	0	120	903	1023	5697
INDUSTRIAL TECHNOLOGY	426	204	21	651	300	354	21	675	45	42	66	153	0	81	21	102	1581
PHYSICAL EDUCATION	1268	285	30	1583	900	513	39	1452	75	111	162	348	43	72	78	193	3576
VOCATIONAL NURSING	192	0	0	192	201	0	0	201	138	0	0	138	0	0	0	0	531
<b>PROF STUDIES TOTAL</b>	<b>3941</b>	<b>3153</b>	<b>903</b>	<b>7997</b>	<b>2637</b>	<b>3627</b>	<b>849</b>	<b>7113</b>	<b>603</b>	<b>684</b>	<b>1527</b>	<b>2814</b>	<b>178</b>	<b>603</b>	<b>1071</b>	<b>1852</b>	<b>19776</b>
<b>RAS</b>	<b>1093</b>	<b>669</b>	<b>86</b>	<b>1848</b>	<b>720</b>	<b>848</b>	<b>114</b>	<b>1682</b>	<b>0</b>	<b>213</b>	<b>51</b>	<b>264</b>	<b>0</b>	<b>37</b>	<b>48</b>	<b>85</b>	<b>3879</b>
<b>Alpine Campus TOTALS:</b>	<b>14377</b>	<b>5859</b>	<b>1594</b>	<b>21830</b>	<b>11823</b>	<b>6737</b>	<b>1515</b>	<b>20075</b>	<b>1532</b>	<b>1544</b>	<b>2024</b>	<b>5100</b>	<b>823</b>	<b>1158</b>	<b>1451</b>	<b>3432</b>	<b>50437</b>

C-6

Source: Curriculum Reports



Semester Credit Hours, 1987-88

	FALL				SPRING				SUMMER I				SUMMER II				FY
	Lower	Upper	Grad	Total	Lower	Upper	Grad	Total	Lower	Upper	Grad	Total	Lower	Upper	Grad	Total	Total
BEHAV & SOC SCIENCES	2838	432	99	3369	2382	522	108	3012	477	93	57	627	291	84	135	510	7518
Geography	201	0	0	201	132	0	0	132	42	0	0	42	0	0	0	0	375
History	873	111	12	996	834	117	6	957	141	42	24	207	63	0	9	72	2232
Philosophy	78	0	0	78	0	0	0	0	0	0	0	0	0	0	0	0	78
Political Science	870	120	87	1077	618	168	102	888	102	27	33	162	192	6	45	243	2370
Psychology	729	126	0	855	618	120	0	738	192	3	0	195	36	75	0	111	1899
Sociology	87	75	0	162	180	117	0	297	0	21	0	21	0	3	81	84	564
BIOLOGY	1160	263	78	1501	1160	269	45	1474	64	136	21	221	0	125	39	164	3360
CHEMISTRY	288	177	0	465	228	164	0	392	100	0	0	100	20	57	0	77	1034
FINE ARTS & COMM	1307	425	100	1832	947	671	104	1722	150	119	72	341	7	178	66	251	4146
Art	291	144	87	522	309	189	78	576	39	51	63	153	0	75	66	141	1392
Communication	357	142	12	511	315	224	21	560	46	27	0	73	0	47	0	47	1191
Fine Arts	336	0	0	336	177	0	0	177	0	0	0	0	0	0	0	0	513
Journalism	6	0	0	6	24	6	0	30	0	0	0	0	1	0	0	1	37
Music	287	69	1	357	95	216	2	313	22	2	9	33	4	12	0	16	719
Theatre	30	70	0	100	27	36	3	66	43	39	0	82	2	44	0	46	294
GEOLOGY	160	119	81	360	278	118	133	529	44	1	39	84	36	60	39	135	1108
LANGUAGES & LIT	2123	570	27	2720	1696	789	33	2518	264	111	78	453	230	45	54	329	6020
English	1827	462	27	2316	1467	684	33	2184	168	84	78	330	150	45	54	249	5079
Spanish	296	108	0	404	229	105	0	334	96	27	0	123	80	0	0	80	941
MATHEMATICS	2179	181	0	2360	2030	113	0	2143	99	120	0	219	237	3	0	240	4962
Astronomy	0	0	0	0	0	0	0	0	0	0	0	0	0	0	0	0	0
Computer Science	582	18	0	600	441	27	0	468	0	0	0	0	156	3	0	159	1227
Mathematics	1485	163	0	1648	1497	86	0	1583	99	120	0	219	81	0	0	81	3531
Physics	112	0	0	112	92	0	0	92	0	0	0	0	0	0	0	0	204
<b>ARTS &amp; SCIENCES TOTAL</b>	<b>10055</b>	<b>2167</b>	<b>385</b>	<b>12607</b>	<b>8721</b>	<b>2646</b>	<b>423</b>	<b>11790</b>	<b>1198</b>	<b>580</b>	<b>267</b>	<b>2045</b>	<b>821</b>	<b>552</b>	<b>333</b>	<b>1706</b>	<b>28148</b>
BUSINESS ADMIN	1116	1272	147	2535	846	1356	252	2454	141	333	150	624	24	312	120	456	6069
Business	894	1269	147	2310	603	1356	252	2211	141	333	120	594	24	240	102	366	5481
Economics	222	3	0	225	243	0	0	243	0	0	30	30	0	72	18	90	588
CRIMINAL JUSTICE	468	132	0	600	336	273	0	609	84	171	0	255	0	24	0	24	1488
EDUCATION	0	972	546	1518	0	1002	552	1554	0	300	1230	1530	0	189	1083	1272	5874
INDUSTRIAL TECHNOLOGY	321	207	3	531	306	354	9	669	3	42	60	105	0	24	36	60	1365
PHYSICAL EDUCATION	1248	327	63	1638	1123	408	36	1567	64	87	180	331	84	55	105	244	3780
VOCATIONAL NURSING	156	0	0	156	154	0	0	154	105	0	0	105	0	0	0	0	415
<b>PROF STUDIES TOTAL</b>	<b>3309</b>	<b>2910</b>	<b>759</b>	<b>6978</b>	<b>2765</b>	<b>3393</b>	<b>849</b>	<b>7007</b>	<b>397</b>	<b>933</b>	<b>1620</b>	<b>2950</b>	<b>108</b>	<b>604</b>	<b>1344</b>	<b>2056</b>	<b>18991</b>
<b>RAS</b>	<b>999</b>	<b>724</b>	<b>127</b>	<b>1850</b>	<b>680</b>	<b>722</b>	<b>122</b>	<b>1524</b>	<b>0</b>	<b>247</b>	<b>66</b>	<b>313</b>	<b>0</b>	<b>42</b>	<b>75</b>	<b>117</b>	<b>3804</b>
<b>Alpine Campus TOTALS:</b>	<b>14363</b>	<b>5801</b>	<b>1271</b>	<b>21435</b>	<b>12166</b>	<b>6761</b>	<b>1394</b>	<b>20321</b>	<b>1595</b>	<b>1760</b>	<b>1953</b>	<b>5308</b>	<b>929</b>	<b>1198</b>	<b>1752</b>	<b>3879</b>	<b>50943</b>

C-7

Semester Credit Hours, 1988-89

	FALL				SPRING				SUMMER I				SUMMER II				FY
	Lower	Upper	Grad	Total	Lower	Upper	Grad	Total	Lower	Upper	Grad	Total	Lower	Upper	Grad	Total	Total
BEHAV & SOC SCIENCES	2700	435	114	3249	2415	711	156	3282	321	186	90	597	348	153	66	567	7695
Geography	189	0	0	189	93	105	0	198	54	0	0	54	0	0	0	0	441
History	813	147	15	975	897	177	9	1083	105	48	15	168	69	0	18	87	2313
Philosophy	81	0	0	81	0	0	0	0	0	0	0	0	0	0	0	0	81
Political Science	792	138	99	1029	657	156	147	960	108	33	75	216	171	0	48	219	2424
Psychology	708	144	0	852	654	219	0	873	0	105	0	105	108	153	0	261	2091
Sociology	117	6	0	123	114	54	0	168	54	0	0	54	0	0	0	0	345
BIOLOGY	1164	410	114	1688	1344	337	93	1774	0	165	54	219	72	100	63	235	3916
CHEMISTRY	420	130	0	550	296	138	0	434	104	0	0	104	0	90	0	90	1178
FINE ARTS & COMM	1396	420	51	1867	952	721	59	1732	83	188	36	307	12	188	36	236	4142
Art	303	180	45	528	171	213	51	435	54	45	27	126	0	69	36	105	1194
Communication	523	156	6	685	375	167	6	548	0	76	6	82	0	3	0	3	1318
Fine Arts	231	0	0	231	297	0	0	297	0	0	0	0	0	0	0	0	528
Journalism	4	12	0	16	4	21	0	25	0	0	0	0	1	0	0	1	42
Music	315	62	0	377	95	246	2	343	24	0	3	27	10	14	0	24	771
Theatre	20	10	0	30	10	74	0	84	5	67	0	72	1	102	0	103	289
GEOLOGY	248	41	107	396	316	103	111	530	68	0	42	110	36	0	36	72	1108
LANGUAGES & LIT	2439	636	6	3081	1880	681	21	2582	299	156	87	542	311	33	42	386	6591
English	2181	537	6	2724	1623	585	21	2229	147	102	87	336	147	0	42	189	5478
Spanish	258	99	0	357	257	96	0	353	152	54	0	206	164	33	0	197	1113
MATHEMATICS	2490	114	0	2604	2151	90	0	2241	249	252	0	501	255	24	0	279	5625
Astronomy	68	0	0	68	0	0	0	0	0	0	0	0	0	0	0	0	68
Computer Science	525	15	0	540	537	39	0	576	0	0	0	0	195	0	0	195	1311
Mathematics	1789	96	0	1885	1558	48	0	1606	249	252	0	501	60	24	0	84	4076
Physics	108	3	0	111	56	3	0	59	0	0	0	0	0	0	0	0	170
<b>ARTS &amp; SCIENCES TOTAL</b>	<b>10857</b>	<b>2186</b>	<b>392</b>	<b>13435</b>	<b>9354</b>	<b>2781</b>	<b>440</b>	<b>12575</b>	<b>1124</b>	<b>947</b>	<b>309</b>	<b>2380</b>	<b>1034</b>	<b>588</b>	<b>243</b>	<b>1865</b>	<b>30255</b>
BUSINESS ADMIN	1062	762	300	2124	711	1257	261	2229	189	300	159	648	147	132	183	462	5463
Business	888	762	300	1950	585	1194	261	2040	189	300	69	558	147	132	123	402	4950
Economics	174	0	0	174	126	63	0	189	0	0	90	90	0	0	60	60	513
CRIMINAL JUSTICE	534	123	0	657	345	195	0	540	57	180	0	237	0	69	0	69	1503
EDUCATION	0	1032	732	1764	0	1341	531	1872	0	411	1449	1860	0	249	1347	1596	7092
INDUSTRIAL TECHNOLOGY	318	201	3	522	252	243	0	495	0	96	0	96	0	0	15	15	1128
PHYSICAL EDUCATION	1391	351	93	1835	1052	327	39	1418	89	126	222	437	76	108	129	313	4003
VOCATIONAL NURSING	210	0	0	210	220	0	0	220	150	0	0	150	0	0	0	0	580
<b>PROF STUDIES TOTAL</b>	<b>3515</b>	<b>2469</b>	<b>1128</b>	<b>7112</b>	<b>2580</b>	<b>3363</b>	<b>831</b>	<b>6774</b>	<b>485</b>	<b>1113</b>	<b>1830</b>	<b>3428</b>	<b>223</b>	<b>558</b>	<b>1674</b>	<b>2455</b>	<b>19769</b>
<b>RAS</b>	<b>1226</b>	<b>560</b>	<b>110</b>	<b>1896</b>	<b>697</b>	<b>857</b>	<b>70</b>	<b>1624</b>	<b>0</b>	<b>280</b>	<b>30</b>	<b>310</b>	<b>0</b>	<b>36</b>	<b>12</b>	<b>48</b>	<b>3878</b>
UNIVERSITY STUDIES	0	0	0	0	0	0	0	0	0	0	0	0	42	0	0	42	42
<b>Alpine Campus TOTALS:</b>	<b>15598</b>	<b>5215</b>	<b>1630</b>	<b>22443</b>	<b>12631</b>	<b>7001</b>	<b>1341</b>	<b>20973</b>	<b>1609</b>	<b>2340</b>	<b>2169</b>	<b>6118</b>	<b>1299</b>	<b>1182</b>	<b>1929</b>	<b>4410</b>	<b>53944</b>

C-8

SOURCE: Curriculum Reports

Semester Credit Hours, 1989-90

	FALL				SPRING				SUMMER I				SUMMER II				FY
	Lower	Upper	Grad	Total	Lower	Upper	Grad	Total	Lower	Upper	Grad	Total	Lower	Upper	Grad	Total	Total
BEHAV & SOC SCIENCES	2970	303	225	3498	2691	417	138	3246	309	162	153	624	390	138	78	606	7974
Geography	252	0	0	252	162	0	0	162	0	0	0	0	51	0	0	51	465
History	891	84	30	1005	855	102	27	984	111	126	42	279	75	0	30	105	2373
Philosophy	84	0	0	84	105	0	0	105	0	0	0	0	0	0	0	0	189
Political Science	831	135	195	1161	819	111	111	1041	78	33	111	222	111	48	48	207	2631
Psychology	849	84	0	933	663	165	0	828	120	3	0	123	114	87	0	201	2085
Sociology	63	0	0	63	87	39	0	126	0	0	0	0	39	3	0	42	231
BIOLOGY	1316	433	93	1842	1328	321	96	1745	112	186	81	379	56	132	57	245	4211
CHEMISTRY	360	188	0	548	320	133	0	453	80	0	0	80	44	102	0	146	1227
FINE ARTS & COMM	1344	452	21	1817	1089	738	36	1863	68	268	45	381	250	150	39	439	4500
Art	270	114	21	405	228	267	33	528	0	114	30	144	51	12	30	93	1170
Communication	400	187	0	587	394	205	3	602	0	33	0	33	60	27	3	90	1312
Fine Arts	378	0	0	378	324	0	0	324	0	0	0	0	120	0	0	120	822
Journalism	4	9	0	13	5	3	0	8	0	6	0	6	0	9	0	9	36
Music	252	73	0	325	100	206	0	306	23	42	0	65	12	10	0	22	718
Theatre	40	69	0	109	38	57	0	95	45	73	15	133	7	92	6	105	442
GEOLOGY	217	101	59	377	148	271	52	471	36	0	12	48	0	2	24	26	922
LANGUAGES & LIT	2183	654	6	2843	1775	654	18	2447	312	132	63	507	328	57	69	454	6251
English	1869	567	6	2442	1581	561	18	2160	180	93	63	336	228	3	69	300	5238
Spanish	314	87	0	401	194	93	0	287	132	39	0	171	100	54	0	154	1013
MATHEMATICS	2738	110	0	2848	2288	82	0	2370	315	170	3	488	126	0	0	126	5832
Astronomy	0	0	0	0	0	0	0	0	0	0	0	0	0	0	0	0	0
Computer Science	474	21	0	495	600	27	0	627	57	66	0	123	0	0	0	0	1245
Mathematics	2172	89	0	2261	1616	55	0	1671	258	104	3	365	126	0	0	126	4423
Physics	92	0	0	92	72	0	0	72	0	0	0	0	0	0	0	0	164
<b>ARTS &amp; SCIENCES TOTAL</b>	<b>11128</b>	<b>2241</b>	<b>404</b>	<b>13773</b>	<b>9639</b>	<b>2616</b>	<b>340</b>	<b>12595</b>	<b>1232</b>	<b>918</b>	<b>357</b>	<b>2507</b>	<b>1194</b>	<b>581</b>	<b>267</b>	<b>2042</b>	<b>30917</b>
BUSINESS ADMIN	945	894	249	2088	702	1062	300	2064	120	192	132	444	147	201	120	468	5064
Business	804	894	249	1947	603	1002	258	1863	120	192	60	372	147	201	110	458	4640
Economics	141	0	0	141	99	60	42	201	0	0	72	72	0	0	10	10	424
CRIMINAL JUSTICE	327	189	0	516	477	174	0	651	0	228	0	228	207	69	0	276	1671
EDUCATION	483	1242	795	2520	114	1374	810	2298	6	678	1482	2166	3	219	1143	1365	8349
INDUSTRIAL TECHNOLOGY	255	141	0	396	180	243	0	423	0	60	0	60	42	0	0	42	921
PHYSICAL EDUCATION	1153	337	39	1529	1065	456	75	1596	67	162	159	388	117	141	96	354	3867
VOCATIONAL NURSING	210	0	0	210	198	0	0	198	120	0	0	120	0	0	0	0	528
<b>PROF STUDIES TOTAL</b>	<b>3373</b>	<b>2803</b>	<b>1083</b>	<b>7259</b>	<b>2736</b>	<b>3309</b>	<b>1185</b>	<b>7230</b>	<b>313</b>	<b>1320</b>	<b>1773</b>	<b>3406</b>	<b>516</b>	<b>630</b>	<b>1359</b>	<b>2505</b>	<b>20400</b>
<b>RAS</b>	<b>1179</b>	<b>556</b>	<b>85</b>	<b>1820</b>	<b>695</b>	<b>790</b>	<b>66</b>	<b>1551</b>	<b>0</b>	<b>81</b>	<b>48</b>	<b>129</b>	<b>0</b>	<b>80</b>	<b>45</b>	<b>125</b>	<b>3625</b>
<b>Alpine Campus TOTALS:</b>	<b>15680</b>	<b>5600</b>	<b>1572</b>	<b>22852</b>	<b>13070</b>	<b>6715</b>	<b>1591</b>	<b>21376</b>	<b>1545</b>	<b>2319</b>	<b>2178</b>	<b>6042</b>	<b>1710</b>	<b>1291</b>	<b>1671</b>	<b>4672</b>	<b>54942</b>

C-9

Semester Credit Hours, 1990-91

	FALL				SPRING				SUMMER I				SUMMER II				FY
	Lower	Upper	Grad	Total	Lower	Upper	Grad	Total	Lower	Upper	Grad	Total	Lower	Upper	Grad	Total	Total
BEHAV & SOC SCIENCES	2640	501	147	3288	2238	642	189	3069	342	129	144	615	303	72	117	492	7464
Geography	270	0	0	270	219	0	0	219	39	0	0	39	0	0	0	0	528
History	897	96	27	1020	687	267	39	993	126	27	12	165	105	27	12	144	2322
Philosophy	87	0	0	87	72	0	0	72	0	0	0	0	0	0	0	0	159
Political Science	717	87	120	924	612	123	150	885	120	12	132	264	108	27	57	192	2265
Psychology	519	318	0	837	537	198	0	735	57	90	0	147	0	18	0	18	1737
Sociology	150	0	0	150	111	54	0	165	0	0	0	0	90	0	48	138	453
				0				0				0					
BIOLOGY	1172	335	90	1597	1256	281	138	1675	0	102	45	147	84	59	21	164	3583
				0				0				0					
CHEMISTRY	336	131	0	467	256	120	0	376	108	9	0	117	80	75	0	155	1115
				0				0				0					
FINE ARTS & COMM	1148	440	24	1612	1319	661	63	2043	92	230	27	349	195	167	33	395	4399
Art	240	171	24	435	333	219	54	606	45	69	24	138	36	54	24	114	1293
Communications	373	156	0	529	454	188	9	651	0	8	0	8	148	31	0	179	1367
Fine Arts	300	0	0	300	408	0	0	408	0	0	0	0	0	0	0	0	708
Journalism	4	3	0	7	3	3	0	6	1	0	0	1	1	0	0	1	15
Music	156	62	0	218	84	126	0	210	15	72	0	87	8	10	0	18	533
Theatre	75	48	0	123	37	125	0	162	31	81	3	115	2	72	9	83	483
				0				0				0					
GEOLOGY	229	83	45	357	256	152	31	439	56	0	9	65	0	0	24	24	885
				0				0				0					
LANGUAGES & LIT	2284	588	42	2914	1873	690	42	2605	233	207	72	512	291	75	54	420	6451
English	1953	465	42	2460	1563	579	42	2184	93	165	72	330	195	39	54	288	5262
Spanish	331	123	0	454	310	111	0	421	140	42	0	182	96	36	0	132	1189
				0				0				0					
MATHEMATICS	2309	147	0	2456	2128	226	0	2354	477	101	12	590	450	74	0	524	5924
Astronomy	132	0	0	132	76	0	0	76	0	0	0	0	0	0	0	0	208
Computer Science	489	39	0	528	441	123	0	564	60	36	0	96	54	48	0	102	1290
Mathematics	1564	108	0	1672	1563	103	0	1666	417	65	12	494	396	26	0	422	4254
Physics	124	0	0	124	48	0	0	48	0	0	0	0	0	0	0	0	172
				0				0				0					
<b>ARTS &amp; SCIENCES TOTAL</b>	<b>10118</b>	<b>2225</b>	<b>348</b>	<b>12691</b>	<b>9326</b>	<b>2772</b>	<b>463</b>	<b>12561</b>	<b>1308</b>	<b>778</b>	<b>309</b>	<b>2395</b>	<b>1403</b>	<b>522</b>	<b>249</b>	<b>2174</b>	<b>29821</b>
				0				0				0					
BUSINESS ADMIN	807	993	189	1989	795	984	204	1983	225	147	87	459	72	51	90	213	4644
Business	630	957	189	1776	648	966	183	1797	195	147	36	378	30	51	81	162	4113
Economics	177	36	0	213	147	18	21	186	30	0	51	81	42	0	9	51	531
				0				0				0					
CRIMINAL JUSTICE	501	189	0	690	531	297	0	828	0	339	0	339	222	36	0	258	2115
				0				0				0					
EDUCATION	435	1533	690	2658	180	1563	741	2484	0	474	1623	2097	21	390	1035	1446	8685
				0				0				0					
INDUSTRIAL TECHNOLOGY	417	96	0	513	255	234	0	489	0	57	0	57	0	0	15	15	1074
				0				0				0					
PHYSICAL EDUCATION	1338	434	42	1814	1112	462	39	1613	298	90	93	481	33	114	33	180	4088
				0				0				0					
VOCATIONAL NURSING	210	0	0	210	198	0	0	198	135	0	0	135	0	0	0	0	543
				0				0				0					
<b>PROF STUDIES TOTAL</b>	<b>3708</b>	<b>3245</b>	<b>921</b>	<b>7874</b>	<b>3071</b>	<b>3540</b>	<b>984</b>	<b>7595</b>	<b>658</b>	<b>1107</b>	<b>1803</b>	<b>3568</b>	<b>348</b>	<b>591</b>	<b>1173</b>	<b>2112</b>	<b>21149</b>
				0				0				0					
<b>RAS</b>	<b>1073</b>	<b>514</b>	<b>113</b>	<b>1700</b>	<b>803</b>	<b>649</b>	<b>99</b>	<b>1551</b>	<b>0</b>	<b>162</b>	<b>48</b>	<b>210</b>	<b>0</b>	<b>97</b>	<b>12</b>	<b>109</b>	<b>3570</b>
				0				0				0					
<b>Alpine Campus TOTALS:</b>	<b>14899</b>	<b>5984</b>	<b>1382</b>	<b>22265</b>	<b>13200</b>	<b>6961</b>	<b>1546</b>	<b>21707</b>	<b>1966</b>	<b>2047</b>	<b>2160</b>	<b>6173</b>	<b>1751</b>	<b>1210</b>	<b>1434</b>	<b>4395</b>	<b>54540</b>

C-10

Semester Credit Hours, 1991-92

	FALL				SPRING				SUMMER I				SUMMER II				FY
	Lower	Upper	Grad	Total	Lower	Upper	Grad	Total	Lower	Upper	Grad	Total	Lower	Upper	Grad	Total	Total
BEHAV & SOC SCIENCES	2784	447	156	3387	2643	600	240	3483	312	153	93	558	414	222	183	819	8247
Geography	261	0	0	261	168	0	0	168	0	0	0	0	105	0	0	105	534
History	894	87	27	1008	975	60	57	1092	114	51	15	180	78	78	27	183	2463
Philosophy	0	0	0	0	0	0	0	0	0	0	0	0	0	0	0	0	0
Political Science	750	75	129	954	729	117	183	1029	93	9	78	180	126	33	57	216	2379
Psychology	768	279	0	1047	684	165	0	849	105	90	0	195	0	108	0	108	2199
Sociology	111	6	0	117	87	258	0	345	0	3	0	3	105	3	99	207	672
BIOLOGY	1084	330	75	1489	1228	302	111	1641	84	87	63	234	0	84	36	120	3484
CHEMISTRY	424	229	0	653	312	171	0	483	40	33	12	85	60	106	0	166	1387
FINE ARTS & COMM	1408	637	33	2078	1225	897	21	2143	227	347	39	613	136	229	36	401	5235
Art	318	258	27	603	273	351	18	642	51	195	21	267	0	54	27	81	1593
Communication	529	161	3	693	470	159	0	629	129	48	0	177	39	56	0	95	1594
Fine Arts	420	0	0	420	399	0	0	399	0	0	0	0	90	0	0	90	909
Journalism	1	15	0	16	3	18	0	21	0	0	0	0	0	0	0	0	37
Music	113	88	0	201	76	244	0	320	12	32	0	44	7	11	0	18	583
Theatre	27	115	3	145	4	125	3	132	35	72	18	125	0	108	9	117	519
GEOLOGY	385	60	28	473	312	154	50	516	0	42	9	51	0	0	9	9	1049
LANGUAGES & LIT	2745	696	33	3474	2059	795	33	2887	212	129	63	404	269	102	18	389	7154
English	2286	615	33	2934	1704	660	33	2397	96	90	63	249	153	66	18	237	5817
Spanish	459	81	0	540	355	135	0	490	116	39	0	155	116	36	0	152	1337
MATHEMATICS	2645	199	0	2844	2236	124	0	2360	489	105	0	594	285	69	0	354	6152
Astronomy	0	0	0	0	0	0	0	0	0	0	0	0	0	0	0	0	0
Computer Science	441	0	0	441	558	39	0	597	42	39	0	81	33	36	0	69	1188
Mathematics	2108	199	0	2307	1610	85	0	1695	447	66	0	513	252	33	0	285	4800
Physics	96	0	0	96	68	0	0	68	0	0	0	0	0	0	0	0	164
<b>ARTS &amp; SCIENCES TOTAL</b>	<b>11475</b>	<b>2598</b>	<b>325</b>	<b>14398</b>	<b>10015</b>	<b>3043</b>	<b>455</b>	<b>13513</b>	<b>1364</b>	<b>896</b>	<b>279</b>	<b>2539</b>	<b>1164</b>	<b>812</b>	<b>282</b>	<b>2258</b>	<b>32708</b>
BUSINESS ADMIN	801	909	342	2052	822	1020	336	2178	120	327	261	708	210	120	231	561	5499
Business	609	879	333	1821	693	948	336	1977	120	327	117	564	177	120	165	462	4824
Economics	192	30	9	231	129	72	0	201	0	0	144	144	33	0	66	99	675
CRIMINAL JUSTICE	480	297	0	777	444	414	0	858	99	171	0	270	39	108	0	147	2052
EDUCATION	495	1197	843	2535	231	1509	1032	2772	0	546	1482	2028	0	459	1107	1566	8901
INDUSTRIAL TECHNOLOGY	426	102	0	528	216	234	3	453	0	60	0	60	0	33	21	54	1095
PHYSICAL EDUCATION	1417	360	24	1801	1174	519	21	1714	243	180	69	492	85	114	15	214	4221
VOCATIONAL NURSING	252	0	0	252	242	0	0	242	150	0	0	150	0	0	0	0	644
<b>PROF STUDIES TOTAL</b>	<b>3871</b>	<b>2865</b>	<b>1209</b>	<b>7945</b>	<b>3129</b>	<b>3696</b>	<b>1392</b>	<b>8217</b>	<b>612</b>	<b>1284</b>	<b>1812</b>	<b>3708</b>	<b>334</b>	<b>834</b>	<b>1374</b>	<b>2542</b>	<b>22412</b>
<b>RAS</b>	<b>1124</b>	<b>608</b>	<b>56</b>	<b>1788</b>	<b>804</b>	<b>843</b>	<b>98</b>	<b>1745</b>	<b>40</b>	<b>132</b>	<b>75</b>	<b>247</b>	<b>0</b>	<b>99</b>	<b>36</b>	<b>135</b>	<b>3915</b>
<b>Alpine Campus TOTALS:</b>	<b>16470</b>	<b>6071</b>	<b>1590</b>	<b>24131</b>	<b>13948</b>	<b>7582</b>	<b>1945</b>	<b>23475</b>	<b>2016</b>	<b>2312</b>	<b>2166</b>	<b>6494</b>	<b>1498</b>	<b>1745</b>	<b>1692</b>	<b>4935</b>	<b>59035</b>

C-11

Semester Credit Hours, 1992-93

	FALL				SPRING				SUMMER I				SUMMER II				FY
	Lower	Upper	Grad	Total	Lower	Upper	Grad	Total	Lower	Upper	Grad	Total	Lower	Upper	Grad	Total	Total
BEHAV & SOC SCIENCES	2608	588	165	3361	2673	567	165	3405	429	270	129	828	501	99	78	678	7594
Geography	177	0	0	177	162	0	0	162	0	0	0	0	111	0	0	111	339
History	804	165	24	993	849	132	36	1017	171	129	15	315	162	0	18	180	2325
Philosophy	87	0	0	87	0	0	0	0	0	0	0	0	0	0	0	0	87
Political Science	699	114	141	954	738	141	129	1008	135	81	114	330	168	6	60	234	2292
Psychology	754	279	0	1033	678	288	0	966	123	60	0	183	0	93	0	93	2182
Sociology	87	30	0	117	246	6	0	252	0	0	0	0	60	0	0	60	369
BIOLOGY	1192	267	117	1576	1156	258	117	1531	0	66	30	96	0	54	69	123	3203
CHEMISTRY	352	367	0	719	312	226	0	538	52	12	0	64	16	53	0	69	1321
FINE ARTS & COMM	1551	587	33	2171	1299	848	82	2229	200	212	36	448	120	204	33	357	4848
Art	399	195	15	609	267	369	45	681	42	24	27	93	0	36	18	54	1383
Communication	496	185	6	687	552	189	3	744	134	46	0	180	104	59	0	163	1611
Fine Arts	390	0	0	390	426	0	0	426	0	0	0	0	0	0	0	0	816
Journalism	8	9	0	17	1	6	0	7	0	0	0	0	0	3	0	3	24
Music	141	84	0	225	50	161	19	230	23	0	0	23	14	10	0	24	478
Theatre	117	114	12	243	3	123	15	141	1	142	9	152	2	96	15	113	536
GEOLOGY	276	192	55	523	364	154	30	548	116	24	30	170	0	12	30	42	1241
Physical Science	0	0	0	0	0	48	0	48	0	0	0	0	0	0	0	0	48
LANGUAGES & LIT	2803	531	54	3388	1966	810	15	2791	213	294	54	561	299	93	21	413	6740
English	2178	432	54	2664	1647	687	15	2349	81	237	54	372	183	60	21	264	5385
Spanish	625	99	0	724	319	123	0	442	132	57	0	189	116	33	0	149	1355
MATHEMATICS	2811	153	0	2964	2266	126	0	2392	298	6	18	322	462	90	0	552	5678
Astronomy	132	0	0	132	0	0	0	0	0	0	0	0	0	0	0	0	132
Computer Science	390	33	0	423	417	78	0	495	81	0	0	81	48	27	0	75	999
Mathematics	2085	120	0	2205	1689	48	0	1737	217	6	18	241	414	63	0	477	4183
Physics	204	0	0	204	160	0	0	160	0	0	0	0	0	0	0	0	364
<b>ARTS &amp; SCIENCES TOTAL</b>	<b>11593</b>	<b>2685</b>	<b>424</b>	<b>14702</b>	<b>10036</b>	<b>3037</b>	<b>409</b>	<b>13482</b>	<b>1308</b>	<b>884</b>	<b>297</b>	<b>2489</b>	<b>1398</b>	<b>605</b>	<b>231</b>	<b>2234</b>	<b>30673</b>
BUSINESS ADMIN	933	855	477	2265	606	1038	435	2079	171	144	105	420	150	219	141	510	4764
Business	714	855	477	2046	477	987	402	1866	171	141	39	351	96	219	123	438	4263
Economics	219	0	0	219	129	51	33	213	0	3	66	69	54	0	18	72	501
CRIMINAL JUSTICE	645	153	0	798	342	351	0	693	228	27	0	255	165	78	0	243	1746
EDUCATION	348	1344	1347	3039	159	1443	1731	3333	0	408	1611	2019	30	363	1383	1776	8391
INDUSTRIAL TECHNOLOGY	417	42	0	459	123	312	36	471	42	63	0	105	0	33	0	33	1035
PHYSICAL EDUCATION	1401	293	33	1727	1070	546	60	1676	277	159	132	568	70	117	48	235	3971
VOCATIONAL NURSING	0	0	0	0	176	0	0	176	210	0	0	210	0	0	0	0	386
<b>PROF STUDIES TOTAL</b>	<b>3744</b>	<b>2687</b>	<b>1857</b>	<b>8288</b>	<b>2476</b>	<b>3690</b>	<b>2262</b>	<b>8428</b>	<b>928</b>	<b>801</b>	<b>1848</b>	<b>3577</b>	<b>415</b>	<b>810</b>	<b>1572</b>	<b>2797</b>	<b>20293</b>
<b>RAS</b>	<b>1062</b>	<b>510</b>	<b>115</b>	<b>1687</b>	<b>714</b>	<b>832</b>	<b>135</b>	<b>1681</b>	<b>44</b>	<b>262</b>	<b>39</b>	<b>345</b>	<b>0</b>	<b>132</b>	<b>44</b>	<b>176</b>	<b>3713</b>
<b>Alpine Campus TOTALS:</b>	<b>16399</b>	<b>5882</b>	<b>2396</b>	<b>24677</b>	<b>13226</b>	<b>7559</b>	<b>2806</b>	<b>23591</b>	<b>2280</b>	<b>1947</b>	<b>2184</b>	<b>6411</b>	<b>1813</b>	<b>1547</b>	<b>1847</b>	<b>5207</b>	<b>59886</b>

C-12

Semester Credit Hours, 1993-94

	FALL				SPRING				SUMMER I				SUMMER II				FY
	Lower	Upper	Grad	Total	Lower	Upper	Grad	Total	Lower	Upper	Grad	Total	Lower	Upper	Grad	Total	Total
BEHAV & SOC SCIENCES	2646	642	204	3492	2748	474	276	3498	336	159	240	735	363	171	75	609	8334
Geography	171	0	0	171	102	0	0	102	0	0	0	0	87	0	0	87	360
History	783	252	24	1059	771	129	27	927	174	42	21	237	51	90	27	168	2391
Philosophy	135	0	0	135	105	0	0	105	0	0	0	0	0	0	0	0	240
Political Science	729	123	120	972	741	123	249	1113	126	66	189	381	63	9	48	120	2586
Psychology	741	246	0	987	906	159	0	1065	36	51	0	87	81	72	0	153	2292
Sociology	87	21	60	168	123	63	0	186	0	0	30	30	81	0	0	81	465
BIOLOGY	1068	324	153	1545	1244	372	150	1766	64	145	24	233	120	0	39	159	3703
FINE ARTS & COMM	1571	635	69	2275	1416	848	45	2309	266	327	33	626	145	305	39	489	5699
Art	324	219	48	591	330	267	36	633	60	156	24	240	54	78	12	144	1608
Communications	603	216	0	819	563	192	9	764	148	62	3	213	75	81	3	159	1955
Fine Arts	417	0	0	417	396	0	0	396	0	0	0	0	0	0	0	0	813
Journalism	1	9	0	10	2	18	0	20	0	3	0	3	0	0	0	0	33
Music	133	84	18	235	74	155	0	229	18	33	0	51	16	11	0	27	542
Theatre	93	107	3	203	51	216	0	267	40	73	6	119	0	135	24	159	748
GEOLOGY & CHEMISTRY	673	551	58	1282	636	364	82	1082	164	183	39	386	84	65	33	182	2932
Chemistry	356	384	0	740	332	184	0	516	92	78	15	185	24	59	0	83	1524
Geology	317	167	58	542	304	180	82	566	72	105	24	201	60	6	33	99	1408
LANGUAGES & LIT	2674	717	15	3406	2233	1026	36	3295	225	276	57	558	252	87	30	369	7628
English	2136	558	15	2709	1770	786	36	2592	180	216	57	453	219	0	30	249	6003
Spanish	538	159	0	697	463	240	0	703	45	60	0	105	33	87	0	120	1625
MATHEMATICS	2675	81	0	2756	2275	108	0	2383	330	51	0	381	288	33	0	321	5841
Astronomy	0	0	0	0	0	0	0	0	0	0	0	0	0	0	0	0	0
Computer Science	399	39	0	438	441	45	0	486	78	18	0	96	48	33	0	81	1101
Mathematics	2156	42	0	2198	1758	63	0	1821	252	33	0	285	240	0	0	240	4544
Physics	120	0	0	120	76	0	0	76	0	0	0	0	0	0	0	0	196
<b>ARTS &amp; SCIENCES</b>	<b>11307</b>	<b>2950</b>	<b>499</b>	<b>14756</b>	<b>10552</b>	<b>3192</b>	<b>589</b>	<b>14333</b>	<b>1385</b>	<b>1141</b>	<b>393</b>	<b>2919</b>	<b>1252</b>	<b>661</b>	<b>216</b>	<b>2129</b>	<b>34137</b>
BUSINESS ADMIN	873	900	309	2082	720	876	333	1929	60	171	147	378	120	285	84	489	4878
Business	675	846	309	1830	561	846	294	1701	60	171	48	279	72	285	69	426	4236
Economics	198	54	0	252	159	30	39	228	0	0	99	99	48	0	15	63	642
CRIMINAL JUSTICE	429	318	0	747	375	372	0	747	66	81	0	147	138	24	0	162	1803
EDUCATION	453	1074	1947	3474	180	1128	2484	3792	0	444	1815	2259	27	195	1659	1881	11406
INDUSTRIAL TECHNOLOGY	387	81	0	468	150	333	3	486	0	39	0	39	45	15	0	60	1053
PHYSICAL EDUCATION	1414	270	18	1702	1006	555	33	1594	236	147	156	539	103	168	27	298	4133
VOCATIONAL NURSING	170	0	0	170	160	0	0	160	189	0	0	189	0	0	0	0	519
<b>PROF STUDIES TOTAL</b>	<b>3726</b>	<b>2643</b>	<b>2274</b>	<b>8643</b>	<b>2591</b>	<b>3264</b>	<b>2853</b>	<b>8708</b>	<b>551</b>	<b>882</b>	<b>2118</b>	<b>3551</b>	<b>433</b>	<b>687</b>	<b>1770</b>	<b>2890</b>	<b>23792</b>
<b>RAS</b>	<b>1154</b>	<b>786</b>	<b>164</b>	<b>2104</b>	<b>795</b>	<b>1212</b>	<b>195</b>	<b>2202</b>	<b>40</b>	<b>213</b>	<b>111</b>	<b>364</b>	<b>0</b>	<b>125</b>	<b>90</b>	<b>215</b>	<b>4885</b>
<b>Alpine Campus TOTALS:</b>	<b>16187</b>	<b>6379</b>	<b>2937</b>	<b>25503</b>	<b>13938</b>	<b>7668</b>	<b>3637</b>	<b>25243</b>	<b>1976</b>	<b>2236</b>	<b>2622</b>	<b>6834</b>	<b>1685</b>	<b>1473</b>	<b>2076</b>	<b>5234</b>	<b>62814</b>

C-13

Semester Credit Hours, 1994-95

	FALL				SPRING				SUMMER I				SUMMER II				FY
	Lower	Upper	Grad	Total	Lower	Upper	Grad	Total	Lower	Upper	Grad	Total	Lower	Upper	Grad	Total	Total
BEHAV & SOC SCIENCES	2975	534	219	3728	3210	513	216	3939	543	111	192	846	258	141	72	471	8984
Geography	168	0	0	168	129	0	0	129	108	0	0	108	0	0	0	0	405
History	912	153	27	1092	807	183	27	1017	171	3	15	189	87	54	24	165	2463
Philosophy	0	0	0	0	126	0	0	126	0	0	0	0	0	0	0	0	126
Political Science	861	90	192	1143	1017	84	189	1290	105	51	177	333	114	6	48	168	2934
Psychology	983	177	0	1160	978	159	0	1137	69	57	0	126	57	81	0	138	2561
Sociology	51	114	0	165	153	87	0	240	90	0	0	90	0	0	0	0	495
BIOLOGY	1180	301	165	1646	1324	326	141	1791	0	94	69	163	196	72	78	346	3946
FINE ARTS & COMM	1499	595	42	2136	1384	626	81	2091	247	182	39	468	102	281	63	446	5141
Art	327	261	36	624	330	210	57	597	39	27	15	81	0	66	30	96	1398
Communication	561	177	6	744	586	125	9	720	119	97	9	225	90	56	18	164	1853
Fine Arts	408	0	0	408	405	0	0	405	0	0	0	0	0	0	0	0	813
Journalism	5	6	0	11	5	0	0	5	0	0	0	0	0	0	0	0	16
Music	147	59	0	206	56	143	0	199	22	1	0	23	4	37	0	41	469
Theatre	51	92	0	143	2	148	15	165	67	57	15	139	8	122	15	145	592
GEOLOGY & CHEMISTRY	676	436	68	1180	760	421	41	1222	216	21	24	261	0	120	6	126	2789
Chemistry	460	231	3	694	336	182	0	518	148	3	0	151	0	84	0	84	1447
Geology	216	205	65	486	424	239	41	704	68	18	24	110	0	36	6	42	1342
LANGUAGES & LIT	3093	660	63	3816	2407	1011	69	3487	303	294	66	663	388	111	33	532	8498
English	2448	567	63	3078	2055	804	69	2928	183	144	66	393	273	108	33	414	6813
Spanish	645	93	0	738	352	207	0	559	120	150	0	270	115	3	0	118	1685
MATHEMATICS	3330	33	0	3363	2338	93	0	2431	432	3	0	435	273	72	0	345	6574
Astronomy	268	0	0	268	0	0	0	0	0	0	0	0	0	0	0	0	268
Computer Science	507	33	0	540	429	66	0	495	99	3	0	102	42	36	0	78	1215
Mathematics	2403	0	0	2403	1833	27	0	1860	333	0	0	333	231	36	0	267	4863
Physics	152	0	0	152	76	0	0	76	0	0	0	0	0	0	0	0	228
<b>ARTS &amp; SCIENCES TOTAL</b>	<b>12753</b>	<b>2559</b>	<b>557</b>	<b>15869</b>	<b>11423</b>	<b>2990</b>	<b>548</b>	<b>14961</b>	<b>1741</b>	<b>705</b>	<b>390</b>	<b>2836</b>	<b>1217</b>	<b>797</b>	<b>252</b>	<b>2266</b>	<b>35932</b>
BUSINESS ADMIN	945	927	264	2136	591	954	267	1812	81	117	144	342	24	189	165	378	4668
Business	777	897	264	1938	465	933	207	1605	81	114	45	240	24	162	84	270	4053
Economics	168	30	0	198	126	21	60	207	0	3	99	102	0	27	81	108	615
CRIMINAL JUSTICE	528	285	0	813	546	291	0	837	42	42	0	84	45	84	0	129	1863
EDUCATION	531	1299	2154	3984	225	1143	2613	3981	0	426	1539	1965	0	87	1263	1350	11280
INDUSTRIAL TECHNOLOGY	393	69	3	465	135	315	9	459	0	42	0	42	0	51	0	51	1017
PHYSICAL EDUCATION	1478	494	21	1993	1276	459	30	1765	220	189	93	502	242	93	24	359	4619
VOCATIONAL NURSING	153	0	0	153	242	0	0	242	150	0	0	150	0	0	0	0	545
<b>PROF STUDIES TOTAL</b>	<b>4028</b>	<b>3074</b>	<b>2442</b>	<b>9544</b>	<b>3015</b>	<b>3162</b>	<b>2919</b>	<b>9096</b>	<b>493</b>	<b>816</b>	<b>1776</b>	<b>3085</b>	<b>311</b>	<b>504</b>	<b>1452</b>	<b>2267</b>	<b>23992</b>
<b>RAS</b>	<b>1384</b>	<b>979</b>	<b>215</b>	<b>2578</b>	<b>915</b>	<b>1217</b>	<b>193</b>	<b>2325</b>	<b>0</b>	<b>288</b>	<b>58</b>	<b>346</b>	<b>0</b>	<b>211</b>	<b>61</b>	<b>272</b>	<b>5521</b>
<b>Alpine Campus TOTALS:</b>	<b>18165</b>	<b>6612</b>	<b>3214</b>	<b>27991</b>	<b>15353</b>	<b>7369</b>	<b>3660</b>	<b>26382</b>	<b>2234</b>	<b>1809</b>	<b>2224</b>	<b>6267</b>	<b>1528</b>	<b>1512</b>	<b>1765</b>	<b>4805</b>	<b>65445</b>

C-14



Semester Credit Hours, 1995-96

C-15

	FALL				SPRING				SUMMER I				SUMMER II				FY
	Lower	Upper	Grad	Total	Lower	Upper	Grad	Total	Lower	Upper	Grad	Total	Lower	Upper	Grad	Total	Total
BEHAV & SOC SCIENCES	3422	660	195	4277	3156	735	306	4197	558	138	102	798	468	189	168	825	10097
Geography	210	0	0	210	165	0	0	165	108	0	0	108	0	0	0	0	483
History	1140	171	21	1332	1200	84	36	1320	147	9	21	177	210	84	15	309	3138
Philosophy	60	0	0	60	60	0	0	60	0	0	0	0	0	0	0	0	120
Political Science	939	144	174	1257	765	105	270	1140	78	57	81	216	99	36	153	288	2901
Psychology	896	333	0	1229	792	330	0	1122	129	6	0	135	159	69	0	228	2714
Sociology	177	12	0	189	111	195	0	306	96	12	0	108	0	0	0	0	603
Anthropology	0	0	0	0	63	21	0	84	0	54	0	54	0	0	0	0	138
BIOLOGY	1252	483	159	1894	1328	371	159	1858	92	60	69	221	76	113	69	258	4231
FINE ARTS & COMM	1811	530	39	2380	1678	778	48	2504	425	317	12	754	190	202	15	407	6045
Art	396	162	27	585	426	279	33	738	0	147	12	159	54	39	12	105	1587
Communication	700	177	9	886	678	168	12	858	76	104	0	180	97	36	0	133	2057
Fine Arts	390	0	0	390	414	0	0	414	291	0	0	291	0	0	0	0	1095
Journalism	1	6	0	7	0	3	0	3	0	0	0	0	0	0	0	0	10
Music	221	44	0	265	113	129	0	242	29	3	0	32	10	67	0	77	616
Theatre	103	141	3	247	47	199	3	249	29	63	0	92	29	60	3	92	680
GEOLOGY & CHEMISTRY	884	441	46	1371	752	432	60	1244	160	96	9	265	0	163	16	179	3059
Chemistry	532	251	0	783	416	163	0	579	128	0	0	128	0	115	0	115	1605
Geology	352	190	46	588	336	269	60	665	32	96	9	137	0	48	16	64	1454
LANGUAGES & LIT	3185	726	54	3965	2389	927	87	3403	313	144	51	508	287	321	66	674	8550
English	2505	615	54	3174	2001	705	87	2793	213	102	51	366	147	213	66	426	6759
Spanish	680	111	0	791	388	222	0	610	100	42	0	142	140	108	0	248	1791
MATHEMATICS	2956	126	0	3082	2248	81	0	2329	249	39	0	288	300	3	0	303	6002
Astronomy	0	0	0	0	0	0	0	0	0	0	0	0	0	0	0	0	0
Computer Science	546	72	0	618	438	75	0	513	78	0	0	78	72	3	0	75	1284
Mathematics	2262	54	0	2316	1746	6	0	1752	171	39	0	210	228	0	0	228	4506
Physics	148	0	0	148	64	0	0	64	0	0	0	0	0	0	0	0	212
<b>ARTS &amp; SCIENCES TOTAL</b>	<b>13510</b>	<b>2966</b>	<b>493</b>	<b>16969</b>	<b>11551</b>	<b>3324</b>	<b>660</b>	<b>15535</b>	<b>1797</b>	<b>794</b>	<b>243</b>	<b>2834</b>	<b>1321</b>	<b>991</b>	<b>334</b>	<b>2646</b>	<b>37984</b>
BUSINESS ADMIN	804	903	240	1947	597	855	147	1599	57	198	84	339	63	108	42	213	4032
Business	576	849	234	1659	459	834	123	1416	57	198	18	273	39	108	18	165	3513
Economics	228	54	6	288	138	21	24	183	0	0	66	66	24	0	24	48	585
CRIMINAL JUSTICE	672	279	0	951	603	363	0	966	69	66	0	135	66	72	0	138	2190
EDUCATION	546	1188	2187	3921	225	1134	2631	3990	0	273	1662	1935	0	75	1110	1185	11031
INDUSTRIAL TECHNOLOGY	363	51	12	426	207	186	6	399	0	24	0	24	84	39	0	123	972
PHYSICAL EDUCATION	1353	559	27	1939	1397	483	39	1919	237	210	30	477	158	132	21	311	4646
VOCATIONAL NURSING	189	0	0	189	220	0	0	220	150	0	0	150	0	0	0	0	559
<b>PROF STUDIES TOTAL</b>	<b>3927</b>	<b>2980</b>	<b>2466</b>	<b>9373</b>	<b>3249</b>	<b>3021</b>	<b>2823</b>	<b>9093</b>	<b>513</b>	<b>771</b>	<b>1776</b>	<b>3060</b>	<b>371</b>	<b>426</b>	<b>1173</b>	<b>1970</b>	<b>23496</b>
<b>RAS</b>	<b>1268</b>	<b>931</b>	<b>201</b>	<b>2400</b>	<b>851</b>	<b>1445</b>	<b>194</b>	<b>2490</b>	<b>0</b>	<b>214</b>	<b>54</b>	<b>268</b>	<b>0</b>	<b>119</b>	<b>69</b>	<b>188</b>	<b>5346</b>
<b>Alpine Campus TOTALS:</b>	<b>18705</b>	<b>6877</b>	<b>3160</b>	<b>28742</b>	<b>15651</b>	<b>7790</b>	<b>3677</b>	<b>27118</b>	<b>2310</b>	<b>1779</b>	<b>2073</b>	<b>6162</b>	<b>1692</b>	<b>1536</b>	<b>1576</b>	<b>4804</b>	<b>66826</b>

Semester Credit Hours, 1996-97

	FALL				SPRING				SUMMER I				SUMMER II				FY
	Lower	Upper	Grad	Total	Lower	Upper	Grad	Total	Lower	Upper	Grad	Total	Lower	Upper	Grad	Total	Total
BEHAV & SOC SCIENCES	3395	816	135	4346	3033	900	291	4224	324	180	156	714	414	204	72	690	9974
Geography	213	0	0	213	99	0	0	99	87	0	0	87	75	0	0	75	474
History	987	129	42	1158	930	309	30	1269	63	39	39	141	45	93	18	156	2724
Philosophy	114	0	0	114	0	0	0	0	0	0	0	0	0	0	0	0	114
Political Science	1029	114	93	1236	1080	69	243	1392	63	24	117	204	132	51	54	237	3069
Psychology	809	288	0	1097	732	393	0	1125	111	117	0	228	63	57	0	120	2570
Sociology	243	207	0	450	126	126	18	270	0	0	0	0	99	3	0	102	822
Anthropology	0	78	0	78	66	3	0	69	0	0	0	54	0	0	0	0	201
BIOLOGY	1192	317	162	1671	1184	268	121	1573	172	78	42	292	88	84	84	256	3792
FINE ARTS & COMM	1781	700	66	2547	1664	875	48	2587	336	309	54	699	115	359	33	507	6340
Art	447	258	48	753	375	345	45	765	48	75	36	159	0	153	18	171	1848
Communication	625	195	12	832	717	165	0	882	80	96	9	185	105	55	9	169	2068
Fine Arts	390	0	0	390	408	0	0	408	174	0	0	174	0	0	0	0	972
Journalism	7	6	0	13	1	9	0	10	0	3	0	3	0	0	0	0	26
Music	227	85	0	312	72	188	0	260	34	33	0	67	8	54	0	62	701
Theatre	85	156	6	247	91	168	3	262	0	102	9	111	2	97	6	105	725
GEOLOGY & CHEMISTRY	900	424	44	1368	756	441	56	1253	164	51	28	243	101	9	12	122	2986
Chemistry	440	196	3	639	312	225	0	537	116	9	0	125	101	0	0	101	1402
Geology	460	228	41	729	444	216	56	716	48	42	28	118	0	9	12	21	1584
LANGUAGES & LIT	2750	828	90	3668	2103	918	81	3102	262	156	57	475	310	204	54	568	7813
English	2334	600	90	3024	1749	807	81	2637	126	114	57	297	210	156	54	420	6378
Spanish	416	228	0	644	278	111	0	389	136	42	0	178	100	48	0	148	1359
French					76	0	0	76	0		0		0	0	0		76
MATHEMATICS	3055	138	0	3193	2465	165	0	2630	366	57	0	423	294	15	0	309	6555
Astronomy	192	0	0	192	96	0	0	96	0	0	0	0	0	0	0	0	288
Computer Science	402	93	0	495	432	81	0	513	78	24	0	102	78	0	0	78	1188
Mathematics	2325	45	0	2370	1857	84	0	1941	288	33	0	321	216	15	0	231	4863
Physics	136	0	0	136	80	0	0	80	0	0	0	0	0	0	0	0	216
<b>ARTS &amp; SCIENCES TOTAL</b>	<b>13073</b>	<b>3223</b>	<b>497</b>	<b>16793</b>	<b>11205</b>	<b>3567</b>	<b>597</b>	<b>15369</b>	<b>1624</b>	<b>831</b>	<b>337</b>	<b>2792</b>	<b>1322</b>	<b>875</b>	<b>255</b>	<b>2452</b>	<b>37406</b>
BUSINESS ADMIN	831	828	99	1758	423	786	117	1326	99	204	54	357	54	168	48	270	3654
Business	612	774	75	1461	285	753	96	1134	99	201	0	300	15	168	33	216	3111
Economics	219	54	24	297	138	33	21	192	0	3	54	57	39	0	15	54	600
CRIMINAL JUSTICE	621	384	0	1005	564	282	0	846	57	81	0	138	57	66	0	123	2112
EDUCATION	486	1029	2475	3990	147	1227	2985	4359	0	240	1512	1752	0	189	1173	1362	11463
INDUSTRIAL TECHNOLOGY	210	114	6	330	186	180	15	381	0	33	0	33	27	33	0	60	804
PHYSICAL EDUCATION	1458	442	54	1954	1185	416	69	1670	244	141	93	478	216	87	51	354	4456
VOCATIONAL NURSING	210	0	0	210	264	0	0	264	150	0	0	150	0	0	0	0	624
<b>PROF STUDIES TOTAL</b>	<b>3816</b>	<b>2797</b>	<b>2634</b>	<b>9247</b>	<b>2769</b>	<b>2891</b>	<b>3186</b>	<b>8846</b>	<b>550</b>	<b>699</b>	<b>1659</b>	<b>2908</b>	<b>354</b>	<b>543</b>	<b>1272</b>	<b>2169</b>	<b>23170</b>
<b>RAS</b>	<b>1225</b>	<b>769</b>	<b>208</b>	<b>2202</b>	<b>669</b>	<b>1147</b>	<b>225</b>	<b>2041</b>	<b>12</b>	<b>210</b>	<b>72</b>	<b>294</b>	<b>0</b>	<b>101</b>	<b>55</b>	<b>156</b>	<b>4693</b>
<b>Alpine Campus TOTALS:</b>	<b>18114</b>	<b>6789</b>	<b>3339</b>	<b>28242</b>	<b>14643</b>	<b>7605</b>	<b>4008</b>	<b>26256</b>	<b>2186</b>	<b>1740</b>	<b>2068</b>	<b>5994</b>	<b>1676</b>	<b>1519</b>	<b>1582</b>	<b>4777</b>	<b>65269</b>

C-16

SOURCE: Curriculum Reports

Semester Credit Hours, 1997-98

	FALL				SPRING				SUMMER I				SUMMER II				FY
	Lower	Upper	Grad	Total	Lower	Upper	Grad	Total	Lower	Upper	Grad	Total	Lower	Upper	Grad	Total	Total
BEHAV & SOC SCIENCES	3153	966	273	4392	2817	897	288	4002	450	240	93	783	360	126	219	705	9882
Geography	213	0	0	213	117	0	0	117	54	0	0	54	57	0	0	57	441
History	957	276	48	1281	915	321	21	1257	150	36	12	198	69	87	15	171	2907
Philosophy	96	0	0	96	57	0	0	57	0	0	0	0	0	0	0	0	153
Political Science	960	120	150	1230	915	150	219	1284	75	72	60	207	84	30	183	297	3018
Psychology	771	168	75	1014	663	297	48	1008	72	96	21	189	75	9	21	105	2316
Sociology	141	402	0	543	150	96	0	246	99	0	0	99	75	0	0	75	963
Anthropology	15	0	0	15	0	33	0	33	0	36	0	36	0	0	0	0	84
BIOLOGY	1072	345	120	1537	1044	285	116	1445	140	92	29	261	124	62	106	292	3535
FINE ARTS & COMMUNICATC	1893	770	93	2756	1502	973	90	2565	157	387	33	577	207	247	57	511	6409
Art	285	222	72	579	198	291	72	561	48	81	15	144	0	93	39	132	1416
Communication	700	210	15	925	605	227	12	844	89	186	3	278	62	43	3	108	2155
Fine Arts	651	0	0	651	579	0	0	579	0	0	0	0	129	0	0	129	1359
Journalism	0	3	0	3	0	6	0	6	1	0	0	1	0	0	0	0	10
Music	123	119	0	242	75	244	0	319	19	15	0	34	14	30	0	44	639
Theatre	134	216	6	356	45	205	6	256	0	105	15	120	2	81	15	98	830
GEOLOGY & CHEMISTRY	723	222	43	988	684	337	39	1060	216	148	0	364	44	54	12	110	2522
Chemistry	368	148	3	519	312	138	0	450	140	3	0	143	44	54	0	98	1210
Geology	355	74	40	469	372	199	39	610	76	145	0	221	0	0	12	12	1312
LANGUAGES & LITERATURE	2721	645	57	3423	1968	858	78	2904	252	171	69	492	334	243	54	631	7450
English	2235	456	57	2748	1656	690	78	2424	105	141	69	315	222	192	54	468	5955
Spanish	338	189	0	527	276	168	0	444	147	30	0	177	112	51	0	163	1311
French	64	0	0	64	36	0	0	36	0	0	0	0	0	0	0	0	100
WS	84	0	0	84	0	0	0	0	0	0	0	0	0	0	0	0	84
CS & MATHEMATICS	2956	65	0	3021	2198	240	0	2438	453	66	0	519	210	6	0	216	6194
Astronomy	184	0	0	184	120	0	0	120	0	0	0	0	0	0	0	0	304
Computer Science	384	28	0	412	312	120	0	432	114	24	0	138	63	0	0	63	1045
Mathematics	2244	37	0	2281	1710	120	0	1830	339	42	0	381	147	6	0	153	4645
Physics	144	0	0	144	56	0	0	56	0	0	0	0	0	0	0	0	200
<b>ARTS &amp; SCIENCES TOTAL</b>	<b>12518</b>	<b>3013</b>	<b>586</b>	<b>16117</b>	<b>10213</b>	<b>3590</b>	<b>611</b>	<b>14414</b>	<b>1668</b>	<b>1104</b>	<b>224</b>	<b>2996</b>	<b>1279</b>	<b>738</b>	<b>448</b>	<b>2465</b>	<b>35992</b>
BUSINESS ADMINISTRATION	618	735	90	1443	480	732	60	1272	78	225	87	390	105	96	33	234	3339
Business	450	684	90	1224	336	717	51	1104	78	222	6	306	72	93	18	183	2817
Economics	168	51	0	219	144	15	9	168	0	3	81	84	33	3	15	51	522
CRIMINAL JUSTICE	558	285	54	897	486	357	102	945	57	48	39	144	0	108	51	159	2145
EDUCATION	438	1194	2769	4401	126	1272	2955	4353	30	198	1377	1605	27	105	924	1056	11415
INDUSTRIAL TECHNOLOGY	252	93	12	357	129	198	12	339	0	30	0	30	48	30	0	78	804
PHYSICAL EDUCATION	1267	462	57	1786	1293	427	45	1765	219	111	111	441	192	114	39	345	4337
VOCATIONAL NURSING	189	0	0	189	264	0	0	264	165	0	0	165	0	0	0	0	618
<b>PROF STUDIES TOTAL</b>	<b>3322</b>	<b>2769</b>	<b>2982</b>	<b>9073</b>	<b>2778</b>	<b>2986</b>	<b>3174</b>	<b>8938</b>	<b>549</b>	<b>612</b>	<b>1614</b>	<b>2775</b>	<b>372</b>	<b>453</b>	<b>1047</b>	<b>1872</b>	<b>22658</b>
<b>RAS</b>	<b>925</b>	<b>713</b>	<b>135</b>	<b>1773</b>	<b>570</b>	<b>1189</b>	<b>115</b>	<b>1874</b>	<b>0</b>	<b>135</b>	<b>78</b>	<b>213</b>	<b>0</b>	<b>102</b>	<b>45</b>	<b>147</b>	<b>4007</b>
<b>ALPINE CAMPUS TOTALS:</b>	<b>16765</b>	<b>6495</b>	<b>3703</b>	<b>26963</b>	<b>13561</b>	<b>7765</b>	<b>3900</b>	<b>25226</b>	<b>2217</b>	<b>1851</b>	<b>1916</b>	<b>5984</b>	<b>1651</b>	<b>1293</b>	<b>1540</b>	<b>4484</b>	<b>62657</b>

C-17

Semester Credit Hours, 1998-99

	FALL				SPRING				SUMMER I				SUMMER II				FY
	Lower	Upper	Grad	Total	Lower	Upper	Grad	Total	Lower	Upper	Grad	Total	Lower	Upper	Grad	Total	Total
BEHAV & SOC SCIENCES	2762	762	189	3713	2901	729	219	3849	384	174	87	645	363	126	21	510	8717
Geography	135	0	0	135	261	3	0	264	0	0	0	0	51	0	0	51	450
History	945	345	33	1323	855	372	6	1233	144	9	6	159	168	60	0	228	2943
Philosophy	114	0	0	114	87	0	0	87	0	0	0	0	0	0	0	0	201
Political Science	762	120	99	981	918	93	171	1182	117	63	81	261	69	15	21	105	2529
Psychology	671	216	57	944	492	252	42	786	123	99	0	222	21	51	0	72	2024
Sociology	135	48	0	183	189	6	0	195	0	3	0	3	54	0	0	54	435
Anthropology	0	33	0	33	99	3	0	102	0	0	0	0	0	0	0	0	135
BIOLOGY	1008	280	134	1422	1152	207	147	1506	164	100	24	288	80	63	103	246	3462
FINE ARTS & COMMUNICATIONS	1878	671	63	2612	1514	859	78	2451	113	267	27	407	148	374	66	588	6058
Art	348	186	42	576	318	234	42	594	30	105	12	147	0	81	33	114	1431
Communication	694	219	3	916	571	269	18	858	70	58	0	128	28	110	21	159	2061
Fine Arts	540	0	0	540	504	0	0	504	0	0	0	0	114	0	0	114	1158
Journalism	2	9	0	11	0	6	0	6	0	0	0	0	0	3	0	3	20
Music	274	104	0	378	82	134	0	216	13	13	0	26	4	50	3	57	677
Theatre	20	153	18	191	39	216	18	273	0	91	15	106	2	130	9	141	711
GEOLOGY & CHEMISTRY	744	249	63	1056	520	350	43	913	60	39	27	126	68	89	18	175	2270
Chemistry	472	119	0	591	140	169	0	309	60	15	0	75	0	59	0	59	1034
Geology	272	130	63	465	380	181	43	604	0	24	27	51	68	30	18	116	1236
LANGUAGES & LITERATURE	2690	669	102	3461	1787	924	72	2783	281	237	39	557	304	102	33	439	7240
English	2280	483	87	2850	1506	726	72	2304	153	150	39	342	156	66	33	255	5751
Spanish	284	144	0	428	237	135	0	372	128	60	0	188	148	36	0	184	1172
French	72	0	0	72	44	0	0	44	0	0	0	0	0	0	0	0	116
WS	54	0	0	54	0	33	0	33	0	0	0	0	0	0	0	0	87
BSL	0	42	15	57	0	30	0	30	0	27	0	27	0	0	0	0	114
CS & MATHEMATICS	2880	148	0	3028	2118	290	0	2408	396	42	0	438	342	57	45	444	6318
Astronomy	148	0	0	148	52	0	0	52	0	0	0	0	0	0	0	0	200
Computer Science	421	96	0	517	363	160	0	523	162	24	0	186	87	0	0	87	1313
Mathematics	2183	52	0	2235	1635	130	0	1765	234	18	0	252	255	57	45	357	4609
Physics	128	0	0	128	68	0	0	68	0	0	0	0	0	0	0	0	196
<b>ARTS &amp; SCIENCES TOTAL</b>	<b>11962</b>	<b>2779</b>	<b>551</b>	<b>15292</b>	<b>9992</b>	<b>3359</b>	<b>559</b>	<b>13910</b>	<b>1398</b>	<b>859</b>	<b>204</b>	<b>2461</b>	<b>1305</b>	<b>811</b>	<b>286</b>	<b>2402</b>	<b>34065</b>
BUSINESS ADMINISTRATION	654	675	108	1437	381	708	135	1224	126	216	24	366	33	174	18	225	3252
Business	75	54	27	156	99	372	66	537	0	3	0	3	33	75	0	108	804
Economics	177	39	0	216	96	45	24	165	48	0	24	72	0	0	18	18	471
Management	0	183	33	216	0	36	0	36	0	0	0	0	0	33	0	33	285
Accounting	177	108	24	309	96	69	0	165	54	0	0	54	0	15	0	15	543
Marketing	0	138	0	138	0	27	24	51	0	129	0	129	0	0	0	0	318
Finance	0	96	24	120	0	42	21	63	0	0	0	0	0	51	0	51	234
OFS	225	57	0	282	90	117	0	207	24	84	0	108	0	0	0	0	597
CRIMINAL JUSTICE	510	285	81	876	426	453	192	1071	0	48	57	105	81	45	0	126	2178
EDUCATION	504	1020	2154	3678	117	804	2178	3099	0	198	1065	1263	27	51	777	855	8895
INDUSTRIAL TECHNOLOGY	357	51	6	414	75	222	6	303	0	27	0	27	45	6	0	51	795
PHYSICAL EDUCATION	1373	557	57	1987	1212	548	51	1811	211	117	60	388	150	132	33	315	4501
VOCATIONAL NURSING	231	0	0	231	242	0	0	242	150	0	0	150	0	0	0	0	623
<b>PROF STUDIES TOTAL</b>	<b>3629</b>	<b>2588</b>	<b>2406</b>	<b>8623</b>	<b>2453</b>	<b>2735</b>	<b>2562</b>	<b>7750</b>	<b>487</b>	<b>606</b>	<b>1206</b>	<b>2299</b>	<b>336</b>	<b>408</b>	<b>828</b>	<b>1572</b>	<b>20244</b>
<b>RAS TOTAL</b>	<b>822</b>	<b>597</b>	<b>171</b>	<b>1590</b>	<b>626</b>	<b>837</b>	<b>157</b>	<b>1620</b>	<b>0</b>	<b>216</b>	<b>75</b>	<b>291</b>	<b>0</b>	<b>108</b>	<b>63</b>	<b>171</b>	<b>3672</b>
<b>ALPINE CAMPUS TOTALS:</b>	<b>16413</b>	<b>5964</b>	<b>3128</b>	<b>25505</b>	<b>13071</b>	<b>6931</b>	<b>3278</b>	<b>23280</b>	<b>1885</b>	<b>1681</b>	<b>1485</b>	<b>5051</b>	<b>1641</b>	<b>1327</b>	<b>1177</b>	<b>4145</b>	<b>57981</b>

C-18

Semester Credit Hours, 1999-2000

	FALL				SPRING				SUMMER I				SUMMER II				FY
	Lower	Upper	Grad	Total	Lower	Upper	Grad	Total	Lower	Upper	Grad	Total	Lower	Upper	Grad	Total	Total
BEHAV & SOC SCIENCES	3080	318	198	3596	2457	666	213	3336	333	87	99	519	216	309	51	576	8027
Geography	333	0	0	333	162	0	0	162	0	0	0	0	48	0	0	48	543
History	990	69	18	1077	870	261	18	1149	144	12	0	156	48	267	0	315	2697
Philosophy	99	0	0	99	60	0	0	60	0	0	0	0	0	0	0	0	159
Political Science	627	111	132	870	582	111	150	843	138	33	99	270	45	3	51	99	2082
Psychology	737	111	48	896	678	231	45	954	51	36	0	87	39	39	0	78	2015
Sociology	243	21	0	264	105	60	0	165	0	0	0	0	36	0	0	36	465
Anthropology	51	6	0	57	0	3	0	3	0	6	0	6	0	0	0	0	66
BIOLOGY	976	220	192	1388	948	195	152	1295	84	36	59	179	68	69	52	189	3051
FINE ARTS & COMMUNICATIONS	1846	688	42	2576	1667	934	66	2667	103	312	36	451	178	198	60	436	6130
Art	423	183	33	639	336	381	45	762	27	84	21	132	30	36	36	102	1635
Communication	637	291	6	934	720	196	15	931	66	119	0	185	1	86	6	93	2143
Fine Arts	579	0	0	579	525	0	0	525	0	0	0	0	138	0	0	138	1242
Journalism	1	15	0	16	1	15	0	16	0	0	0	0	0	3	0	3	35
Music	119	72	0	191	54	104	0	158	9	16	0	25	8	10	3	21	395
Theatre	87	127	3	217	31	238	6	275	1	93	15	109	1	63	15	79	680
EARTH & PHYSICAL SCIENCE	862	199	62	1123	584	271	39	894	208	66	9	283	56	7	18	81	2381
Chemistry	392	110	0	502	232	114	0	346	104	6	0	110	0	6	0	6	964
Geology	438	89	62	589	352	141	39	532	104	60	9	173	56	1	18	75	1369
Physical Science	32	0	0	32	0	16	0	16	0	0	0	0	0	0	0	0	48
LANGUAGES & LITERATURE	2308	597	66	2971	1868	660	96	2624	221	78	30	329	234	159	36	429	6353
English	1929	414	66	2409	1620	537	96	2253	177	48	30	255	174	96	36	306	5223
Spanish	276	120	0	396	196	87	0	283	44	27	0	71	60	57	0	117	867
French	40	0	0	40	52	0	0	52	0	0	0	0	0	0	0	0	92
WS	63	0	0	63	0	0	0	0	0	3	0	3	0	0	0	0	66
BSL	0	63	0	63	0	36	0	36	0	0	0	0	0	6	0	6	105
CS & MATHEMATICS	2403	62	0	2465	1863	115	0	1978	324	48	30	402	270	0	9	279	5124
Astronomy	0	0	0	0	0	0	0	0	0	0	0	0	0	0	0	0	0
Computer Science	426	43	0	469	483	37	0	520	72	21	0	93	102	0	0	102	1184
Mathematics	1977	19	0	1996	1332	78	0	1410	252	27	30	309	168	0	9	177	3892
Physics	0	0	0	0	48	0	0	48	0	0	0	0	0	0	0	0	48
<b>ARTS &amp; SCIENCES TOTAL</b>	<b>11475</b>	<b>2084</b>	<b>560</b>	<b>14119</b>	<b>9387</b>	<b>2841</b>	<b>566</b>	<b>12794</b>	<b>1273</b>	<b>627</b>	<b>263</b>	<b>2163</b>	<b>1022</b>	<b>742</b>	<b>226</b>	<b>1990</b>	<b>31066</b>
BUSINESS ADMINISTRATION	555	594	126	1275	390	825	135	1350	0	264	39	303	54	156	57	267	3195
Business	81	39	3	123	129	531	75	735	0	51	0	51	0	48	6	54	963
Economics	123	24	3	150	102	27	0	129	0	3	39	42	0	3	30	33	354
Management	0	81	63	144	0	72	0	72	0	0	0	0	0	39	21	60	276
Accounting	144	150	27	321	69	90	0	159	0	27	0	27	54	3	0	57	564
Marketing	0	156	0	156	0	51	30	81	0	0	0	0	0	0	0	0	237
Finance	0	108	30	138	0	0	30	30	0	90	0	90	0	63	0	63	321
OFS	207	36	0	243	90	54	0	144	0	93	0	93	0	0	0	0	480
CRIMINAL JUSTICE	546	270	222	1038	375	291	132	798	0	78	42	120	0	30	54	84	2040
EDUCATION	327	786	1698	2811	195	1194	2166	3555	15	153	972	1140	18	0	883	901	8407
INDUSTRIAL TECHNOLOGY	258	33	3	294	150	150	3	303	15	33	0	48				0	645
PHYSICAL EDUCATION	1111	415	27	1553	1153	420	27	1600	195	102	48	345	173	138	27	338	3836
VOCATIONAL NURSING	190	0	0	190	264	0	0	264	165	0	0	165	0	0	0	0	619
<b>PROF STUDIES TOTAL</b>	<b>2987</b>	<b>2098</b>	<b>2076</b>	<b>7161</b>	<b>2527</b>	<b>2880</b>	<b>2463</b>	<b>7870</b>	<b>390</b>	<b>630</b>	<b>1101</b>	<b>2121</b>	<b>245</b>	<b>324</b>	<b>1021</b>	<b>1590</b>	<b>18742</b>
NATURAL RESOURCE MGMT	429	147	54	630	124	242	176	542	0	54	37	91	0	18	42	60	1323
Natural Resource Management	0	0	0	0	124	202	176	502	0	54	37	91	0	18	42	60	653
Agricultural Business	0	0	0	0	0	40	0	40	0	0	0	0	0	0	0	0	40
ANIMAL SCIENCE	306	393	122	821	405	554	31	990	0	96	18	114	0	44	42	86	2011
<b>ANRS TOTAL</b>	<b>735</b>	<b>540</b>	<b>176</b>	<b>1451</b>	<b>529</b>	<b>796</b>	<b>207</b>	<b>1532</b>	<b>0</b>	<b>150</b>	<b>55</b>	<b>205</b>	<b>0</b>	<b>62</b>	<b>84</b>	<b>146</b>	<b>3334</b>
<b>ALPINE CAMPUS TOTALS:</b>	<b>15197</b>	<b>4722</b>	<b>2812</b>	<b>22731</b>	<b>12443</b>	<b>6517</b>	<b>3236</b>	<b>22196</b>	<b>1663</b>	<b>1407</b>	<b>1419</b>	<b>4489</b>	<b>1267</b>	<b>1128</b>	<b>1331</b>	<b>3726</b>	<b>53142</b>

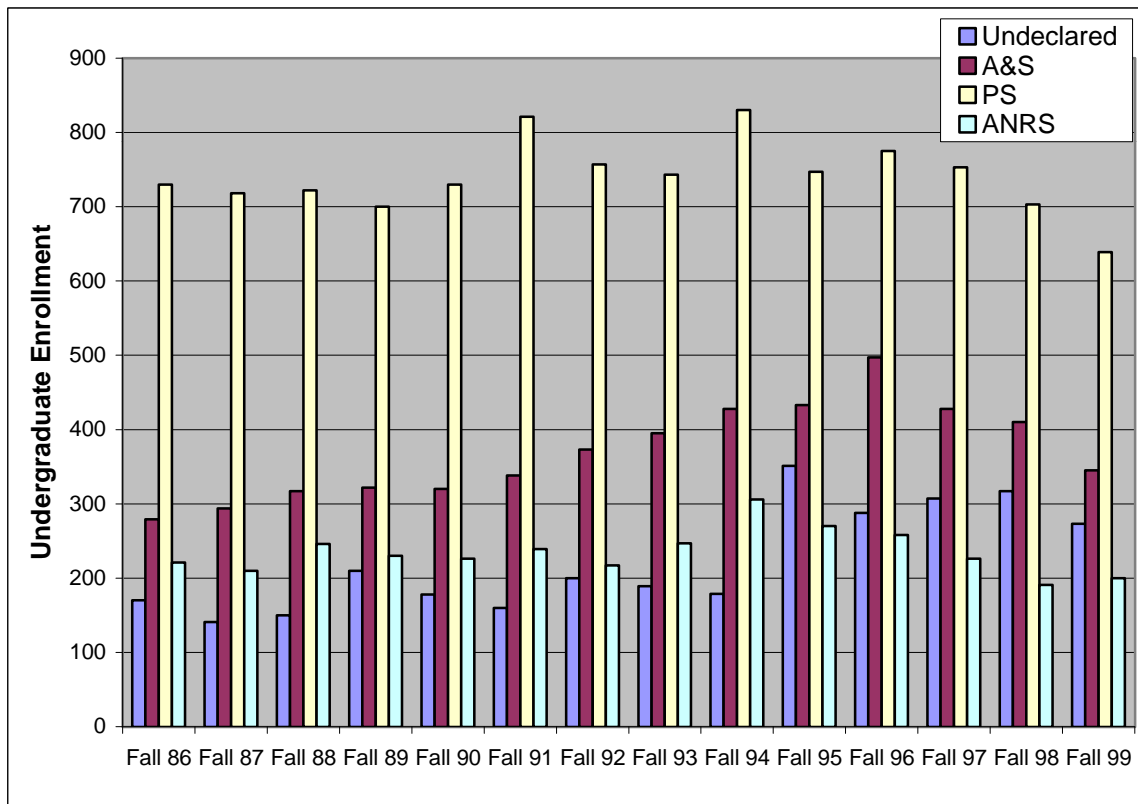
C-19

SOURCE: Curriculum Reports

**Undergraduate Enrollment by School, Fall 1986-1999**

	Undeclared		Arts & Sciences		Professional Studies		Ag & Natural Resource Sc		University Total	
	N	%	N	%	N	%	N	%	N	%
Fall 86	170	12	279	20	730	52	221	16	1400	100
Fall 87	141	10	294	22	718	53	210	15	1363	100
Fall 88	150	10	317	22	722	50	246	17	1435	100
Fall 89	210	14	322	22	700	48	230	16	1462	100
Fall 90	178	12	320	22	730	50	226	16	1454	100
Fall 91	160	10	338	22	821	53	239	15	1558	100
Fall 92	200	13	373	24	757	49	217	14	1547	100
Fall 93	189	12	395	25	743	47	247	16	1574	100
Fall 94	179	10	428	25	830	48	306	18	1743	100
Fall 95	351	19	433	24	747	41	270	15	1801	100
Fall 96	288	16	497	27	775	43	258	14	1818	100
Fall 97	307	18	428	25	753	44	226	13	1714	100
Fall 98	317	20	410	25	703	43	191	12	1621	100
Fall 99	273	19	345	24	639	44	200	14	1457	100

SOURCE: CBM001



## Undergraduate Enrollment by Major, Fall 1988-1999

Program, Major	1988	1989	1990	1991	1992	1993	1994	1995	1996	1997	1998	1999
<b>AG &amp; NATURAL RESOURCE SCIENCES</b>												
Ag Gen, Ag Ed	14	16	20	8	14	9	15	26	1	2	0	0
Animal Sci.	35	25	25	37	24	33	40	33	58	55	47	47
Meat Ind. Mgt., Tech	18	21	17	20	21	20	23	17	17	16	14	13
Equine Science	18	21	18	14	16	21	34	27	21	16	21	21
Wildlife Mgt.	44	37	38	47	32	33	64	51	16	10	3	-
Natural Resource Mgt.	-	-	-	-	-	-	-	-	41	36	32	38
Agri-Business	42	42	45	51	40	42	52	48	40	36	29	25
Farrrier Tech.	7	7	6	5	5	5	3	2	8	7	5	6
Range Mgt.	18	7	14	12	17	20	17	14	2	-	-	-
An. Health Mgt.	10	19	16	14	19	24	15	11	14	10	8	5
Vet Tech.	22	10	3	2	7	13	15	16	17	22	17	31
Pre-Vet	18	25	24	29	22	27	28	25	23	16	15	14
<b>TOTAL</b>	<b>246</b>	<b>230</b>	<b>226</b>	<b>239</b>	<b>217</b>	<b>247</b>	<b>306</b>	<b>270</b>	<b>258</b>	<b>226</b>	<b>191</b>	<b>200</b>
<b>ARTS &amp; SCIENCES</b>												
Art, Art Educ.	24	29	22	24	25	26	23	24	24	17	23	19
Biology	52	49	42	52	38	48	55	54	71	48	42	36
Chemistry	6	9	9	13	19	19	12	16	11	9	10	9
Communications	34	30	28	30	38	34	39	31	40	30	33	32
English	21	19	28	31	38	37	43	47	47	40	38	33
Geology	16	8	13	11	13	18	20	17	19	19	10	21
History	13	17	20	12	16	14	15	16	13	16	17	14
Math., Pre-Engin.	21	20	31	43	32	19	30	25	29	26	29	16
Music, Mus. Educ.	15	12	11	6	7	9	4	7	10	8	14	12
Psychology	48	50	64	64	68	69	86	78	64	52	42	54
Political Science	19	19	15	13	19	21	16	17	20	12	9	6
Soc. Science	7	7	9	6	7	10	5	8	9	6	6	3
Spanish	14	10	9	12	15	17	22	17	19	24	19	9
Theater	3	7	4	9	13	15	10	10	20	19	17	15
Pre-Dental	0	0	0	0	0	1	0	0	0	0	2	12
Pre-Law	14	10	5	6	8	8	12	10	10	15	19	14
Pre-Med, Pre-Nur.	7	23	7	6	15	27	29	17	32	38	26	9
Pre-Pharmacy	3	3	3	0	2	3	7	3	6	2	1	0
Environmental Sci.	-	-	-	-	-	-	-	5	7	11	6	0
Computer Sci.	-	-	-	-	-	-	-	31	46	36	47	31
<b>TOTAL</b>	<b>317</b>	<b>322</b>	<b>320</b>	<b>338</b>	<b>373</b>	<b>395</b>	<b>428</b>	<b>433</b>	<b>497</b>	<b>428</b>	<b>410</b>	<b>345</b>

(continued on next page)

## Undergraduate Enrollment by Major, Fall 1988-1999 (cont.)

Program, Major	1988	1989	1990	1991	1992	1993	1994	1995	1996	1997	1998	1999
<b>PROFESSIONAL STUDIES</b>												
Business, General	81	71	66	75	52	58	71	68	77	38	17	6
Bus. Educ.	16	13	13	14	16	9	14	7	-	-	-	-
Office Occ.	23	25	21	33	30	44	32	22	41	32	31	35
Accounting	47	38	37	44	48	33	37	28	33	22	27	31
Finance	11	6	9	6	7	4	6	9	3	2	1	0
Management	39	39	31	24	25	31	46	25	33	74	77	85
Marketing	19	19	16	10	10	10	10	8	5	4	2	0
Criminal Just.	110	111	136	169	162	145	154	163	166	154	130	126
Education, Other	34	50	49	59	64	65	88	85	0	2	-	-
Elementary Educ.	108	117	115	117	121	113	111	110	187	189	180	-
Secondary Educ.	2	3	3	7	4	3	3	4	-	-	-	-
Ind.Tech, IT Educ.	51	41	40	43	45	40	44	34	29	28	33	26
Physical Educ.	169	157	173	193	150	167	188	163	180	183	185	152
Phys. Therapy	2	0	0	3	6	1	7	9	11	13	9	0
Nursing (Voc)	10	10	21	24	17	20	19	12	10	12	11	13
Interdisciplinary Studies	-	-	-	-	-	-	-	-	-	-	-	165
<b>TOTAL</b>	<b>722</b>	<b>700</b>	<b>730</b>	<b>821</b>	<b>757</b>	<b>743</b>	<b>830</b>	<b>747</b>	<b>775</b>	<b>753</b>	<b>703</b>	<b>639</b>
<b>Undeclared Major</b>	<b>150</b>	<b>210</b>	<b>178</b>	<b>160</b>	<b>200</b>	<b>189</b>	<b>179</b>	<b>351</b>	<b>288</b>	<b>307</b>	<b>317</b>	<b>273</b>
<b>UNIVERSITY TOTAL</b>	<b>1435</b>	<b>1462</b>	<b>1454</b>	<b>1558</b>	<b>1547</b>	<b>1574</b>	<b>1743</b>	<b>1801</b>	<b>1818</b>	<b>1714</b>	<b>1621</b>	<b>1457</b>

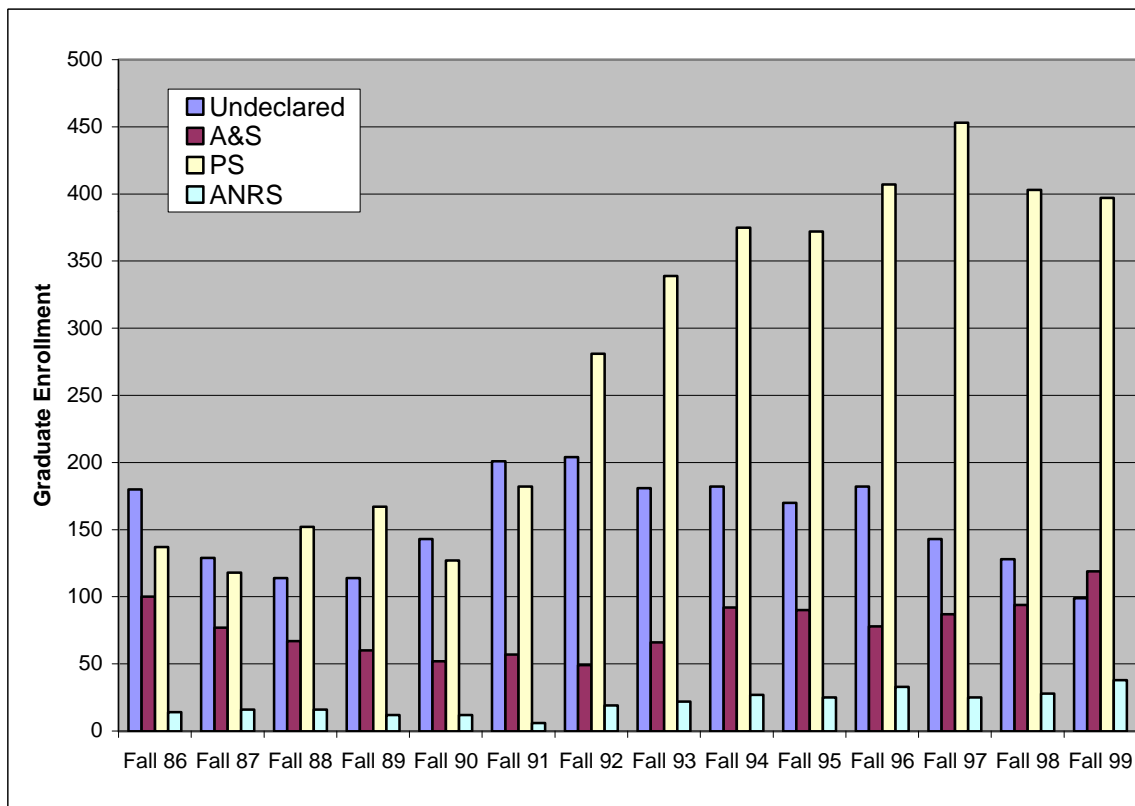
SOURCE: CBM001



**Graduate Enrollment by School, Fall 1986-1999**

	Undeclared		Arts & Sciences		Professional Studies		Ag & Natural Resource Sc		University Total	
	N	%	N	%	N	%	N	%	N	%
Fall 86	180	42	100	23	137	32	14	3	431	100
Fall 87	129	38	77	23	118	35	16	5	340	100
Fall 88	114	33	67	19	152	44	16	5	349	100
Fall 89	114	32	60	17	167	47	12	3	353	100
Fall 90	143	43	52	16	127	38	12	4	334	100
Fall 91	201	45	57	13	182	41	6	1	446	100
Fall 92	204	37	49	9	281	51	19	3	553	100
Fall 93	181	30	66	11	339	56	22	4	608	100
Fall 94	182	27	92	14	375	55	27	4	676	100
Fall 95	170	26	90	14	372	57	25	4	657	100
Fall 96	182	26	78	11	407	58	33	5	700	100
Fall 97	143	20	87	12	453	64	25	4	708	100
Fall 98	128	20	94	14	403	62	28	4	653	100
Fall 99	99	15	119	18	397	61	38	6	653	100

SOURCE: CBM001



## Graduate Enrollment by Major, Fall 1988-1999

Program, Major	1988	1989	1990	1991	1992	1993	1994	1995	1996	1997	1998	1999
<b>AG &amp; NATURAL RESOURCE SCIENCES</b>												
Ag, General*		1	1	1	4	5	4	4				
Animal Sci.	8	2	4		7	8	12	7	22	11	17	16
Meat Ind. Mgt., Tech*		1	2			1	1	2		1		
Equine Science*		1				1	2	2				2
Wildlife Mgt.*			2	2	1	2	3	4		1		
Range & Wildlife Mgt.	8	6	2	1	4	2	2	4	11	12	10	17
Agri-Business*			1	1	2		1	1				
Range Mgt.*		1		1	1	3						
An. Health Mgt.*							1					
An. Health Tech.*							1	1			1	2
Prevet*												1
<b>TOTAL</b>	<b>16</b>	<b>12</b>	<b>12</b>	<b>6</b>	<b>19</b>	<b>22</b>	<b>27</b>	<b>25</b>	<b>33</b>	<b>25</b>	<b>28</b>	<b>38</b>
<b>ARTS &amp; SCIENCES</b>												
Art	11	6	5	3	1	6	10	6	7	12	10	10
Biology	18	14	15	15	16	28	27	29	26	24	23	37
Chemistry*												
Communications*												1
English	4	3	6	7	6	3	15	12	14	12	19	18
Geology	21	13	8	7	9	11	13	11	10	6	5	5
History	2	7	4	5	5	5	2	4	7	11	9	7
Mathematics*												
Music			1									
Psychology		3	1	2			1	2		9	12	13
Political Science	10	14	12	18	11	13	23	24	14	13	16	26
Soc. Science	1						1					
Spanish*					1							1
Theater*								1				
Environmental Science								1				
Comp. & Info. Science*												1
<b>TOTAL</b>	<b>67</b>	<b>60</b>	<b>52</b>	<b>57</b>	<b>49</b>	<b>66</b>	<b>92</b>	<b>90</b>	<b>78</b>	<b>87</b>	<b>94</b>	<b>119</b>

(continued on next page)

## Graduate Enrollment by Major, Fall 1988-1999 (cont.)

Program, Major	1988	1989	1990	1991	1992	1993	1994	1995	1996	1997	1998	1999
<b>PROFESSIONAL STUDIES</b>												
Business, General	19	10	9	22	20	21	11	14	7	3	0	1
Accounting		4	1	1							0	0
Management	5	13	13	2	4	2	7	3	1	4	7	8
International Trade	10	9	7	11	29	14	13	8	5	3	4	4
Criminal Justice	1		3		1			1		6	13	25
Education, General	16	14	10	12	21	29	32	26		2	1	0
Elementary Education	8	6	6	2	5	8	5	2	4	12	10	3
Secondary Education	2	1		2	5	5	3	5	7	5	3	25
Diagnostician	5	4		4	5	4	15	11	14	12	16	17
Counseling	17	13	21	32	84	136	150	156	175	182	152	135
Admin., Mid-Mgt.	44	59	33	55	75	88	100	112	147	171	153	140
Supervision	6	5	4	6	4	5	1	3	5	2	2	0
Bilingual		2					3		4	7	8	3
Reading Spec.	4	7	9	21	19	17	22	21	21	29	23	24
Industrial Technology	4	3		2		2	1	2	2	2	3	3
Physical Educ.	11	17	11	10	9	8	12	8	15	13	8	8
Interdisciplinary Studies												1
<b>TOTAL</b>	<b>152</b>	<b>167</b>	<b>127</b>	<b>182</b>	<b>281</b>	<b>339</b>	<b>375</b>	<b>372</b>	<b>407</b>	<b>453</b>	<b>403</b>	<b>397</b>
<b>Undeclared Major</b>	<b>114</b>	<b>114</b>	<b>143</b>	<b>201</b>	<b>204</b>	<b>181</b>	<b>182</b>	<b>170</b>	<b>182</b>	<b>143</b>	<b>128</b>	<b>99</b>
<b>UNIVERSITY TOTAL</b>	<b>349</b>	<b>353</b>	<b>334</b>	<b>446</b>	<b>553</b>	<b>608</b>	<b>676</b>	<b>657</b>	<b>700</b>	<b>708</b>	<b>653</b>	<b>653</b>

SOURCE: CBM001.

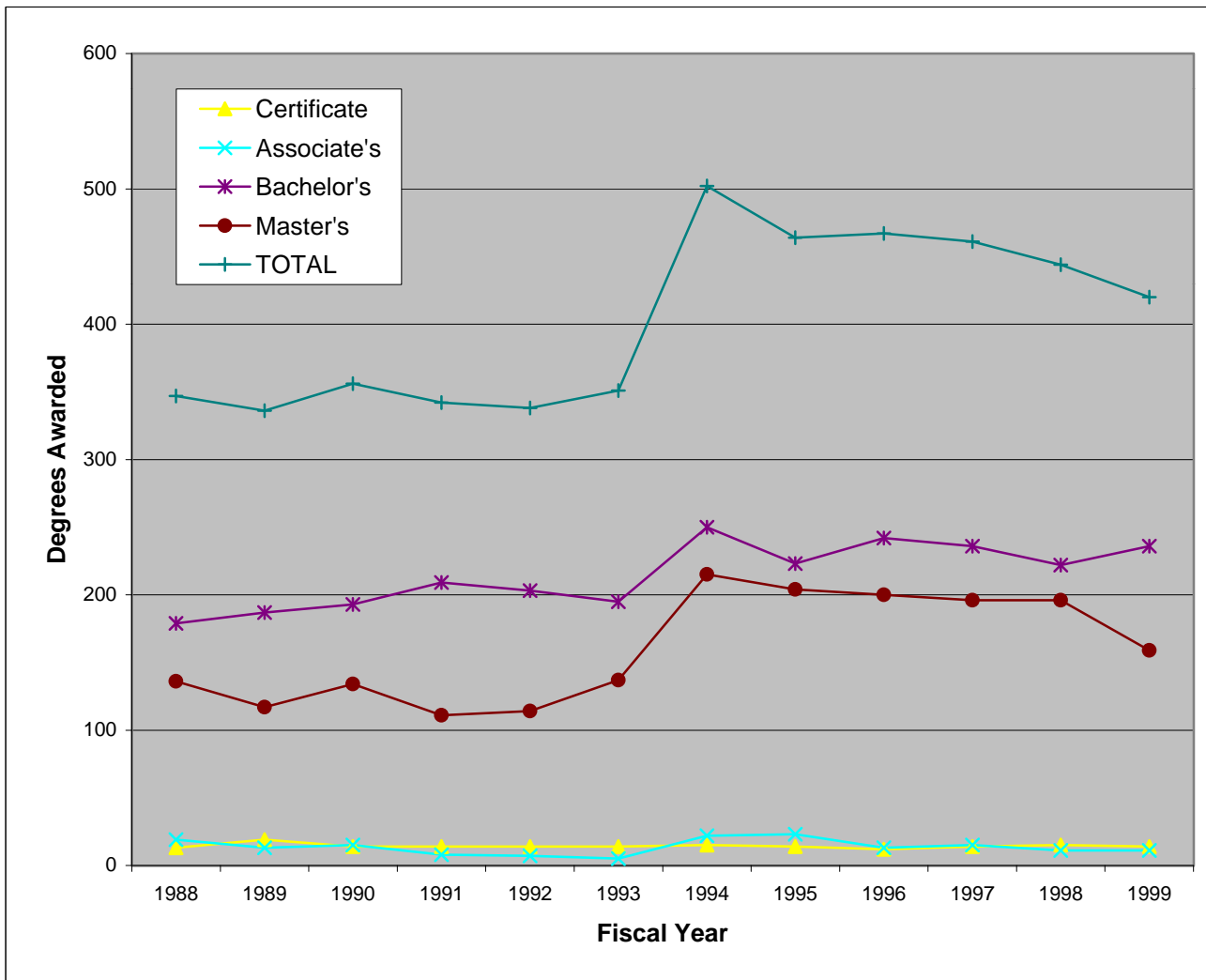
\*Graduate programs do not exist in these fields.

**Degrees Awarded by Level, FY 1988-1999**

Degree	1988	1989	1990	1991	1992	1993	1994	1995	1996	1997	1998	1999
Certificate	13	19	14	14	14	14	15	14	12	14	15	14
Associate's	19	13	15	8	7	5	22	23	13	15	11	11
Bachelor's	179	187	193	209	203	195	250	223	242	236	222	236
Master's	136	117	134	111	114	137	215	204	200	196	196	159
<b>TOTAL</b>	<b>347</b>	<b>336</b>	<b>356</b>	<b>342</b>	<b>338</b>	<b>351</b>	<b>502</b>	<b>464</b>	<b>467</b>	<b>461</b>	<b>444</b>	<b>420</b>

SOURCE: CBM009.

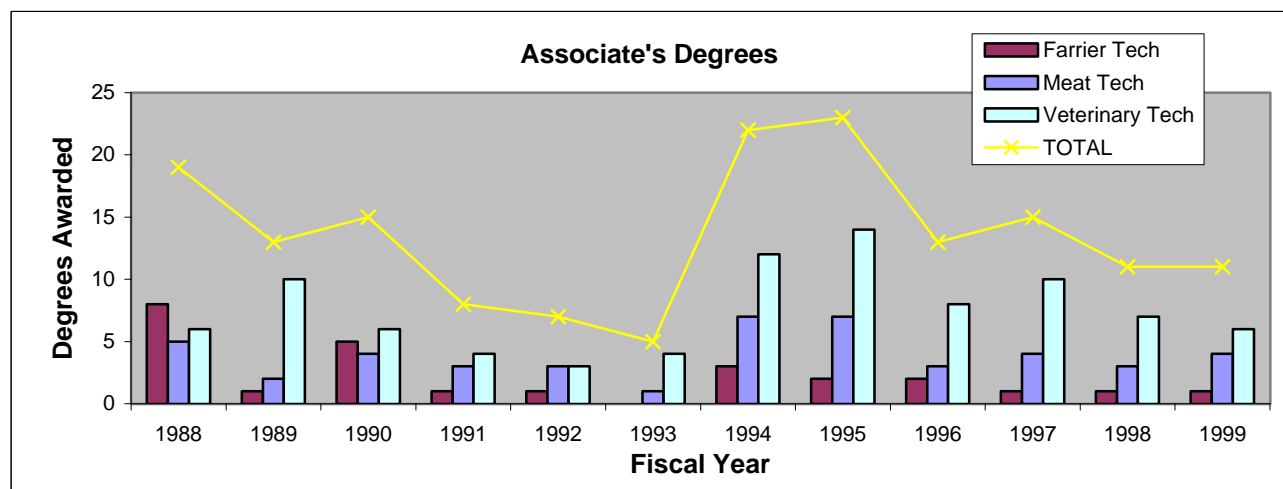
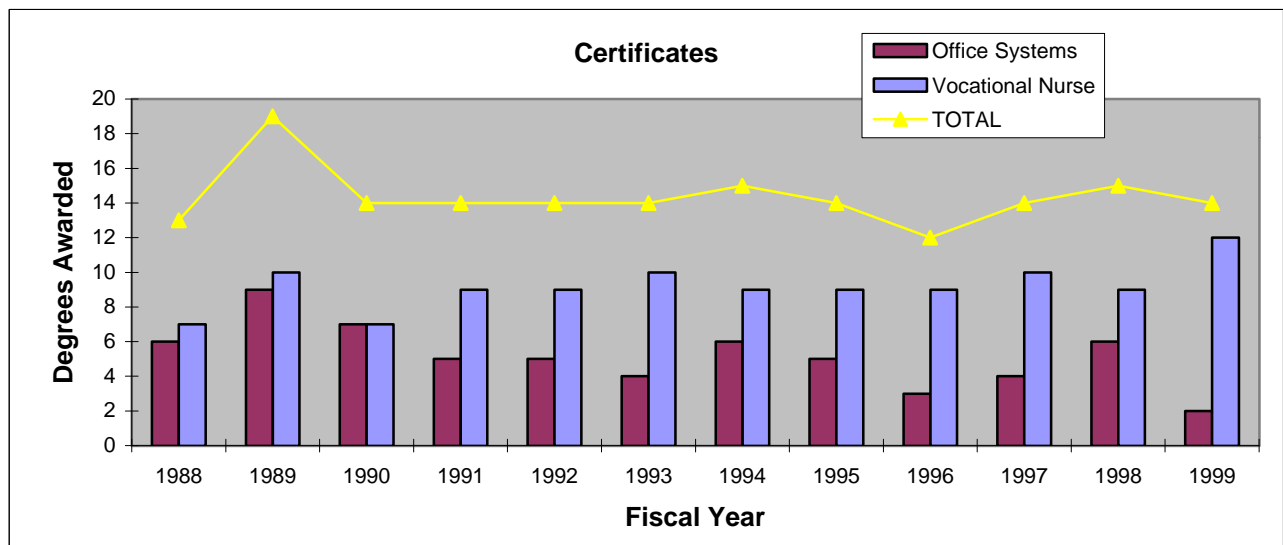
September 1 through August 31 for each period; 1998-1999 is FY99.



**Certificates and Associate's Degrees Awarded by Program, FY 1988-1999**

Program	1988	1989	1990	1991	1992	1993	1994	1995	1996	1997	1998	1999
<b>Certificate Only:</b>												
Office Systems	6	9	7	5	5	4	6	5	3	4	6	2
Vocational Nurse	7	10	7	9	9	10	9	9	9	10	9	12
<b>TOTAL</b>	<b>13</b>	<b>19</b>	<b>14</b>	<b>14</b>	<b>14</b>	<b>14</b>	<b>15</b>	<b>14</b>	<b>12</b>	<b>14</b>	<b>15</b>	<b>14</b>
<b>Associate's Degrees:</b>												
Farrier Tech	8	1	5	1	1	0	3	2	2	1	1	1
Meat Tech	5	2	4	3	3	1	7	7	3	4	3	4
Veterinary Tech	6	10	6	4	3	4	12	14	8	10	7	6
<b>TOTAL</b>	<b>19</b>	<b>13</b>	<b>15</b>	<b>8</b>	<b>7</b>	<b>5</b>	<b>22</b>	<b>23</b>	<b>13</b>	<b>15</b>	<b>11</b>	<b>11</b>

SOURCE: CBM009. 1990-91 based on Official Graduation Lists.



## Bachelor's Degrees Awarded by Program, FY 1988-1999

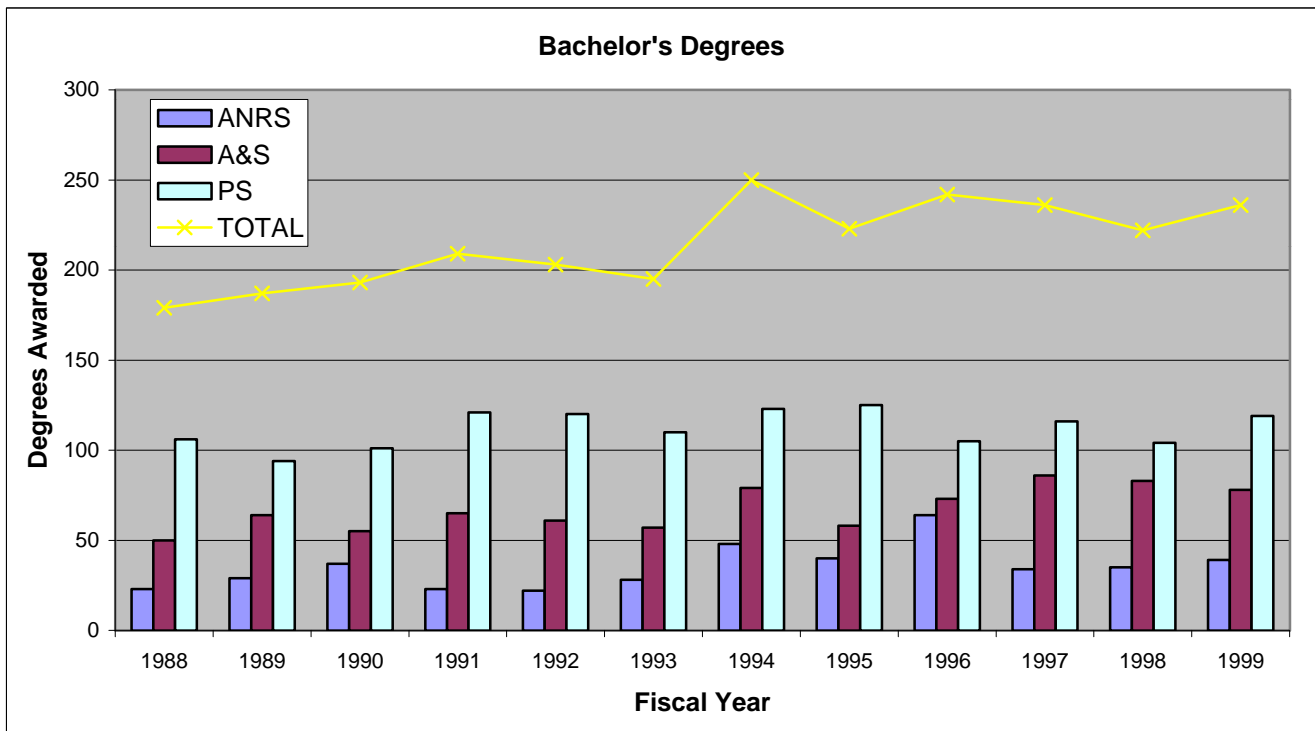
Program	1988	1989	1990	1991	1992	1993	1994	1995	1996	1997	1998	1999
<b>Ag &amp; Natural Resource Sciences</b>												
Ag General					2	3		2		2		
Agribus	5	6	13	7	7	8	9	7	16	8	9	7
Animal Science	3	5	4	4	2	1	7	4	13	5	6	8
Meat Industry Mgt	1	5	1	1		4	5	4	5	4	3	4
Equine Science	2		5	2	2	1	4	4	10	5	1	5
Animal Health Mgt	6	6	5	6	6	4	14	7	7	4	5	2
Range Mgt	3	3	2	2	2	1	3	5	4	1		
Wildlife Mgt	3	4	7	1	1	6	6	7	9	5	3	1
Nat Resource Mgt									4	6	8	12
<b>TOTAL</b>	<b>23</b>	<b>29</b>	<b>37</b>	<b>23</b>	<b>22</b>	<b>28</b>	<b>48</b>	<b>40</b>	<b>64</b>	<b>34</b>	<b>35</b>	<b>39</b>
<b>Arts &amp; Sciences</b>												
Art	4	4	4	4	4	2		4	3	5	5	3
Art Education		2										
Studio Art							5					
Communication	6	7	3	5	5	4	8	7	5	6	4	12
Theatre			1			3	5	1	3	2	4	4
Music Ed-Instr				5	1		1					
Music Ed-Voc	2				2							
Music-Applied					2							
English	2	7	6	3	3	5	9	7	12	12	8	8
History	3	2	1	5	5	3	6	3	4	2	3	3
Psychology	9	6	11	13	11	15	12	7	14	20	14	9
Political Science	1	7	3	2	2	2	7	7	4	3	3	2
Social Science	2	3	2	4	5	2	1	2	1	3	3	3
Spanish		5	3	3	3	5	3	4	4	6	9	6
Biology	7	12	19	12	12	10	7	9	9	15	16	11
Chemistry	3	1		1	1		7		5	3	1	4
Geol-Earth Science	1											
Geology	7	4		4	2		4	6	3	3	5	3
Mathematics	3	4	2	3	3	6	4		2		3	7
Physical Science				1								
Computer Science								1	4	6	5	3
<b>TOTAL</b>	<b>50</b>	<b>64</b>	<b>55</b>	<b>65</b>	<b>61</b>	<b>57</b>	<b>79</b>	<b>58</b>	<b>73</b>	<b>86</b>	<b>83</b>	<b>78</b>

(continued on next page)

**Bachelor's Degrees Awarded by Program, FY 1988-1999 (cont.)**

Program	1988	1989	1990	1991	1992	1993	1994	1995	1996	1997	1998	1999
<b>Professional Studies</b>												
Business Admin	6	2	6	3	4	4	7	7	4	7	6	10
Accounting	10	13	10	6	6	7	2	8	2	7	1	
Finance	5		3	3	3	1	2	4	2	2	1	
Management	12	7	8	7	8	5	9	11	5	9	8	13
Marketing	7	7	4	6	5	1	3	3	1	2	2	1
Office Systems	7		5			3	4	3	3	3	4	2
Business Educ	2	2	3	6	5							
Criminal Justice	14	14	14	12	12	25	22	16	18	22	24	19
Elementary Ed	11	23	26	38	39	36	29	39	34	37		
IA-Industrial Tech	8	10	6	9	9	7	11	9	6	6	3	6
Physical Education	24	16	16	21	20							
Kin & Sports Sc				10	9	21	34	25	30	21	25	33
Interdisc Studies											30	35
<b>TOTAL</b>	<b>106</b>	<b>94</b>	<b>101</b>	<b>121</b>	<b>120</b>	<b>110</b>	<b>123</b>	<b>125</b>	<b>105</b>	<b>116</b>	<b>104</b>	<b>119</b>
<b>GRAND TOTAL</b>	<b>179</b>	<b>187</b>	<b>193</b>	<b>209</b>	<b>203</b>	<b>195</b>	<b>250</b>	<b>223</b>	<b>242</b>	<b>236</b>	<b>222</b>	<b>236</b>

SOURCE: CBM009



## Master's Degrees Awarded by Program, FY 1988-1999

Program	1988	1989	1990	1991	1992	1993	1994	1995	1996	1997	1998	1999
<b>Ag &amp; Natural Resource Sciences</b>												
Animal Science		3		4	6	2	8	4	3	5	7	6
Meat Industry Mgt				2								
Range Animal Sc						2	3	3	6	2		
Range & Wildlife Mgt	1	1	5		1		1	1	4	4	4	3
Wildlife Mgt				1								
Agri-Business						1	1					
<b>TOTAL</b>	<b>1</b>	<b>4</b>	<b>5</b>	<b>7</b>	<b>7</b>	<b>5</b>	<b>13</b>	<b>8</b>	<b>13</b>	<b>11</b>	<b>11</b>	<b>9</b>
<b>Arts &amp; Sciences</b>												
Art	2	5		1			4	3	3	1	3	2
Art Educ	2		1	1	2	2						
Communication	2											
Music Ed-Instr	1											
Music Ed-Voc	1											
English	6	2	2	4	3	6	1	5	6	7	3	5
History	4		6	3	2	2	3	2	2	2	4	2
Political Science	4		2	2	2	2	2	2	7	2	1	4
Pol Sci-Public Admin	1	8	8	5	5	4	7	6	7	4	6	2
Social Science	2											
Biology	4	6	1	2	2	5	4	5	8	6	10	5
Geology	6	6	2	1	4	1		6	3	4	1	2
Psychology												1
<b>TOTAL</b>	<b>35</b>	<b>27</b>	<b>22</b>	<b>19</b>	<b>20</b>	<b>22</b>	<b>21</b>	<b>29</b>	<b>36</b>	<b>26</b>	<b>28</b>	<b>23</b>

(continued on next page)



Master's Degrees Awarded by Program, FY 1988-1999 (cont.)

Program	1988	1989	1990	1991	1992	1993	1994	1995	1996	1997	1998	1999
<b>Professional Studies</b>												
Agribusiness			1									
Business Admin	4	5	4	2	2	3	5	3				1
Accounting	2		1	1	1							
Management	3	3	1	4	4	1			3		1	
Inter Trade	3	19	13	9	9	15	15	10	11	4	4	2
Criminal Justice											2	7
Ed-Bilingual							1	1			2	44
Ed-School Admin	28	30	45	28	30	46	40	41	45	49	55	50
Ed-Supervision		5	3	2	2	5	3	2			1	
Ed-Diagnostician	5	2	3		1	1	3	3	9	9	6	4
Ed-Counseling	8	9	4	16	15	16	88	88	64	78	64	1
Ed-Elementary	14	2	8	3	3	1	3	1		3	1	
Ed-Secondary	5		3	2	1	1	2	4		4		1
Ed-Reading	6	7	4	5	5	15	12	8	14	6	8	7
Industrial Arts	4		2	1	1							
Physical Educ	18	4	15	12	13	6	9	6	5	6	13	10
<b>TOTAL</b>	<b>100</b>	<b>86</b>	<b>107</b>	<b>85</b>	<b>87</b>	<b>110</b>	<b>181</b>	<b>167</b>	<b>151</b>	<b>159</b>	<b>157</b>	<b>127</b>
<b>GRAND TOTAL</b>	<b>136</b>	<b>117</b>	<b>134</b>	<b>111</b>	<b>114</b>	<b>137</b>	<b>215</b>	<b>204</b>	<b>200</b>	<b>196</b>	<b>196</b>	<b>159</b>

SOURCE: CBM009

