

# Fall 2008 Graduating Student Survey

Office of Institutional Research & Effectiveness, January 2009

The following information was obtained from the Fall 2008 surveys sent to graduating students. A total of 87 students graduated during the fall semester. Of the total, 24 obtained a masters degree and 63 obtained a bachelors. Total graduates who returned their surveys were 26 for a 29.88% response rate. Of those that returned the surveys, 10 obtained a masters degree (41.66% of total masters) and 16 obtained a bachelors (25.39% of total bachelors).

Chart 1 shows the age breakdown of graduating students that returned surveys.

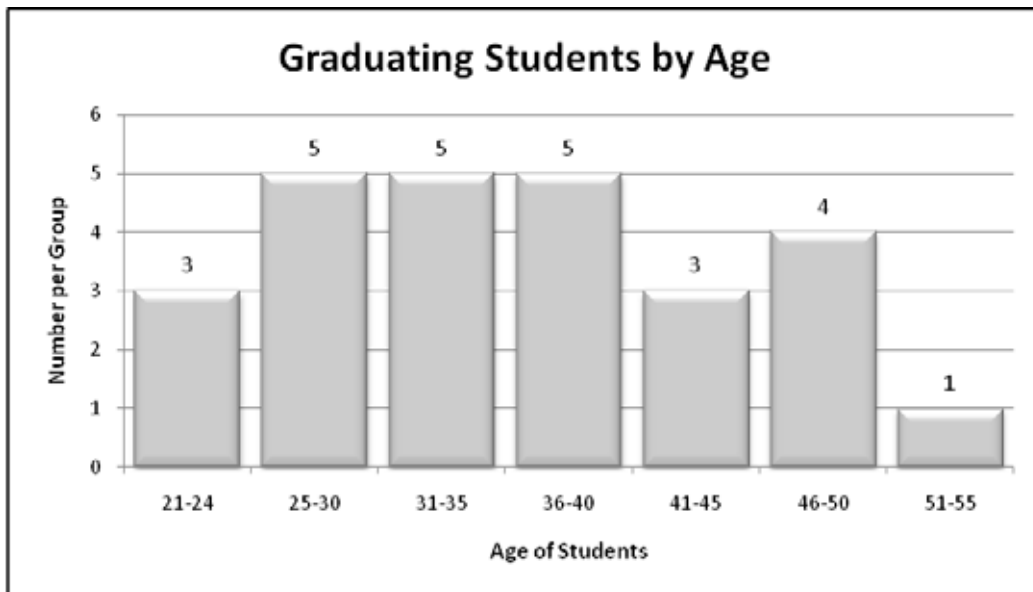
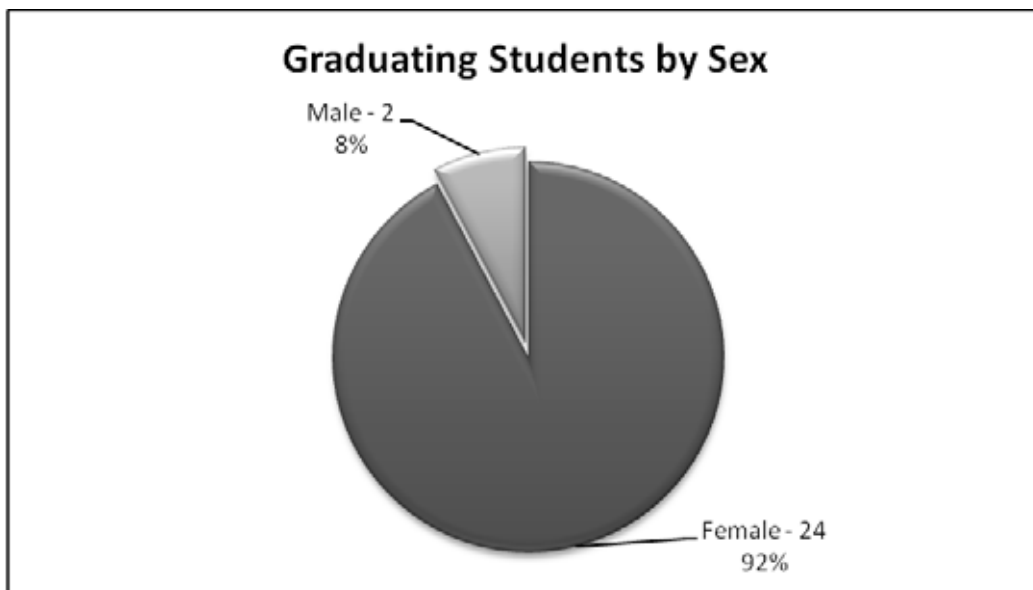


Chart 2 provides the return rate based on gender.





4. My Mother's highest level of college or university education is  
A. No college      B. Some college      C. Bachelors/Four year degree  
D. Graduate/Professional degree      E. Unknown

**Response:**    No college **85%**      Some college **12%**      Bachelors/four year degree **0%**  
Graduate/Professional diploma **4%**      Unknown **0%**

5. If you could start college over, would you choose to attend SRSU?  
A. Definitely yes      B. Probably yes      C. Uncertain  
D. Probably no      E. Definitely no

**Response:**    Definitely yes **42%**      Probably yes **42%**      Uncertain **15%**  
Probably no **0%**      Definitely no **0%**

6. If you could start college over, would you choose to graduate with the same major?  
A. Definitely yes      B. Probably yes      C. Uncertain  
D. Probably no      E. Definitely no

**Response:**    Definitely yes **69%**      Probably yes **19%**      Uncertain **8%**  
Probably no **4%**      Definitely no **0%**

7. How would you compare the quality of education provided at SRSU with that of other colleges?  
A. Better      B. About the same      C. Worse      D. Unable to judge

**Response:**    Better **4%**      About the same **31%**      Worse **4%**  
Unable to judge **23%**      Did not answer **38%**

8. What are your current employment plans?  
A. I plan to continue working in the same job I had prior to completing this program.  
B. I plan to work in a job I recently obtained.  
C. I am currently looking for a job.  
D. I do not plan to work outside the home  
E. I have not yet formulated my employment plans.

**Response:**    I plan to continue working in the same job I had prior to completing this program. **54%**  
I plan to work in a job I recently obtained. **12%**  
I am currently looking for a job. **31%**  
I do not plan to work outside the home. **0%**  
I have not yet formulated my employment plans. **0%**  
A & C. **4%**

9. If you currently have or will be starting a new job, to what extent is it related to your major, or area of study at SRSU?

- A. Directly related      B. Somewhat related      C. Not elated at all

**Response:**      Directly related **58%**      Somewhat related **19%**  
                         Not related at all **12%**      Did not answer **12%**

10. What plans do you have at this time for further formal education?

- A. I do not plan any further education.  
B. I plan to pursue a masters degree.  
C. I plan to pursue a degree beyond a masters degree.  
D. I plan to pursue additional education certification(s).

**Response:**      I do not plan any further education. **15%**  
                         I plan to pursue a masters degree. **50%**  
                         I plan to pursue a degree beyond a masters degree. **15%**  
                         I plan to pursue additional education certification(s). **12%**  
                         B & D. **4%**  
                         C & D. **4%**

11. How soon do you plan to pursue this additional education?

- A. Not relevant – no further formal education planned.  
B. Next Semester.      C. Within the next year.      D. Not yet determined.

**Response:**      Not relevant – no further formal education planned. **12%**  
                         Next Semester. **19%**      Within the next year. **35%**  
                         Not yet determined. **27%**      Did not answer **8%**

12. Where are you likely to enroll in pursuit of this additional education?

- A. Sul Ross      B. Other university in Texas      C. Other university outside Texas

**Response:**      Sul Ross **58%**      Other university in Texas **8%**  
                         Other university outside Texas **4%**      Did not answer **27%**      A & B **4%**

13. Has any other member of your family graduated from SRSU?

- A. Yes      B. No

**Response:**      Yes **19%**      No **77%**      Did not answer **4%**

14. How long have you been a student at SRSU?

A. One year or less

B. Two years

C. Three years

D. Four Years

E. Five or more years

**Response:** One year or less 4% Two years 35% Three years 35%  
Four years 4% Five or more years 19% Did not answer 4%

15. For the program you are now completing, were any of the courses completed at another college or university? (major credits)

A. Yes

B. No

**Response:** Yes 27% No 69% Did not answer 4%

16. On average, how many hours per week did you study for each course you took?

A. 3 or less

B. 4 to 5

C. 6 to 7

D. 8 to 9

E. 10 or more

**Response:** 3 or less 8% 4 to 5 42% 6 to 7 15%  
8 to 9 12% 10 or more 19% Did not answer 4%

17. Please indicate how often you used the computer lab.

A. Daily

B. Several times a week

C. Once a week

D. Once a month

E. Never

**Response:** Daily 15% Several times a week 35% Once a week 19%  
Once a month 19% Never 8% Did not answer 4%

18. Please indicate how often you used the library.

A. Daily

B. Several times a week

C. Once a week

D. Once a month

E. Never

**Response:** Daily 0% Several times a week 15% Once a week 8%  
Once a month 35% Never 38% Did not answer 4%

19. How many hours per month were you involved in community or public service activities?

A. 0

B. 1-5

C. 6-10

D. 11-15

E. More than 15

**Response:** 0 31 11-15 4% 1-5 38% More than 15 8%  
6-10 15% Did not answer 4%

**II. How much did your education at SRSU contribute to your personal growth in each of the following areas? Rate this section using the following scale.**

**A. Very Much      B. Somewhat      C. Very Little**

20. Effective writing.

**Response:**    Very Much **58%**    Somewhat **35%**    Very Little **4%**    Did not answer **4%**

21. Speaking effectively.

**Response:**    Very Much **62%**    Somewhat **31%**    Very Little **4%**    Did not answer **4%**

22. Understanding written information.

**Response:**    Very Much **54%**    Somewhat **35%**    Very Little **8%**    Did not answer **4%**

23. Working cooperatively in a group.

**Response:**    Very Much **54%**    Somewhat **31%**    Very Little **12%**    Did not answer **4%**

24. Organizing your time effectively.

**Response:**    Very Much **58%**    Somewhat **23%**    Very Little **15%**    Did not answer **4%**

25. Recognizing your rights, responsibilities and privileges as a citizen.

**Response:**    Very Much **54%**    Somewhat **38%**    Very Little **4%**    Did not answer **4%**

26. Planning and carrying out projects.

**Response:**    Very Much. **58%**    Somewhat **35%**    Very Little **4%**    Did not answer **4%**

27. Understanding and applying mathematics in your daily activities.

**Response:**    Very Much **42%**    Somewhat **35%**    Very Little **19%**    Did not answer **4%**

28. Understanding different philosophies and cultures.

**Response:**    Very Much **58%**    Somewhat **31%**    Very Little **8%**    Did not answer **4%**

29. Persisting at difficult tasks.

**Response:** Very Much 50% Somewhat 38% Very Little 8% Did not answer 4%

30. Defining and solving problems.

**Response:** Very Much 58% Somewhat 31% Very Little 8% Did not answer 4%

31. Recognizing assumptions and making logical inferences and reaching correct conclusions.

**Response:** Very Much 50% Somewhat 42% Very Little 4% Did not answer 4%

32. Understanding and applying scientific principles and methods.

**Response:** Very Much 31% Somewhat 54% Very Little 12% Did not answer 4%

33. Using computers effectively.

**Response:** Very Much 54% Somewhat 35% Very Little 8% Did not answer 4%

**III. Rate the following maintenance and housekeeping operations at the Sul Ross State University (SRSU) campus using the following scale.**

**A. Excellent B. Satisfactory C. Unsatisfactory D. Service available but not used**

34. Maintenance of classrooms

**Response:** Excellent 58% Satisfactory 42%  
Unsatisfactory 0% Service available but not used 0%

35. Maintenance of restrooms

**Response:** Excellent 73% Satisfactory 27%  
Unsatisfactory 0% Service available but not used 0%

36. Maintenance of grounds

**Response:** Excellent 65% Satisfactory 35%  
Unsatisfactory 0% Service available but not used 0%

37. Parking lots

**Response:**    Excellent **69%**                      Satisfactory **27%**  
                    Unsatisfactory **4%**                      Service available but not used **0%**

38. Campus lighting

**Response:**    Excellent **42%**                      Satisfactory **46%**  
                    Unsatisfactory **12%**                      Service available but not used **0%**

**IV. Rate the following student programs or services at the Sul Ross State University (SRSU) campus using the following scale.**

**A. Excellent    B. Satisfactory    C. Unsatisfactory    D. Service available but not used**

39. Academic advising by your major advisor.

**Response:**    Excellent **31%**                      Satisfactory **42%**                      Unsatisfactory **5%**  
                    Service Available but not used **19%**                      Did not answer **4%**

40. Personal Counseling

**Response:**    Excellent **23%**                      Satisfactory **42%**  
                    Unsatisfactory **12%**                      Service Available but not used **23%**

41. Job Placement Services

**Response:**    Excellent **4%**                      Satisfactory **19%**                      Unsatisfactory **19%**  
                    Service Available but not used **54%**                      Did not answer **4%**

42. Student Entertainment and Activities

**Response:**    Excellent **4%**                      Satisfactory **31%**  
                    Unsatisfactory **15%**                      Service Available but not used **50%**

43. Career Information and Planning

**Response:**    Excellent **8%**                      Satisfactory **19%**  
                    Unsatisfactory **23%**                      Service Available but not used **50%**



44. Financial Assistance

**Response:** Excellent 50% Satisfactory 23%  
Unsatisfactory 12% Service Available but not used 15%

45. New Student Orientation

**Response:** Excellent 12% Satisfactory 42%  
Unsatisfactory 12% Service Available but not used 35%

46. Veteran's Assistance

**Response:** Excellent 0% Satisfactory 8% Unsatisfactory 8%  
Service available but not used 81% Did not Answer 4%

47. Student Organizations

**Response:** Excellent 15% Satisfactory 27%  
Unsatisfactory 8% Service available but not used 50%

48. Bookstore

**Response:** Excellent 8% Satisfactory 42%  
Unsatisfactory 19% Service available but not used 31%

49. Instruction -- classroom performance of faculty

**Response:** Excellent 58% Satisfactory 38%  
Unsatisfactory 4% Service available but not used 0%

50. Student Government Association

**Response:** Excellent 8% Satisfactory 15% Unsatisfactory 0%  
Service available but not used 73% Did not Answer 4%

51. Student Publications (Rio Grande Times, Vanguard, Road Scholar)

**Response:** Excellent 8% Satisfactory 46% Unsatisfactory 0%  
Service available but not used 42% Did not Answer 4%

52. Usefulness of the Student Handbook

**Response:** Excellent 27% Satisfactory 42% Unsatisfactory 4%  
Service available but not used 23% Did not Answer 4%

53. Registration process

**Response:** Excellent 35% Satisfactory 58%  
Unsatisfactory 8% Service available but not used 0%

54. Admissions and Records Office

**Response:** Excellent 42% Satisfactory 50%  
Unsatisfactory 8% Service available but not used 0%

55. Cashier's Office

**Response:** Excellent 38% Satisfactory 54%  
Unsatisfactory 8% Service available but not used 0%

56. E-mail services/Internet access

**Response:** Excellent 42% Satisfactory 58%  
Unsatisfactory 0% Service available but not used 0%

57. Tutorial Study Assistance

**Response:** Excellent 4% Satisfactory 19%  
Unsatisfactory 4% Service available but not used 73%

58. Computer Center: Overall services

**Response:** Excellent 38% Satisfactory 62%  
Unsatisfactory 0% Service available but not used 0%

59. Computer Center: Hours of Operation

**Response:** Excellent 38% Satisfactory 54%  
Unsatisfactory 4% Service available but not used 4%