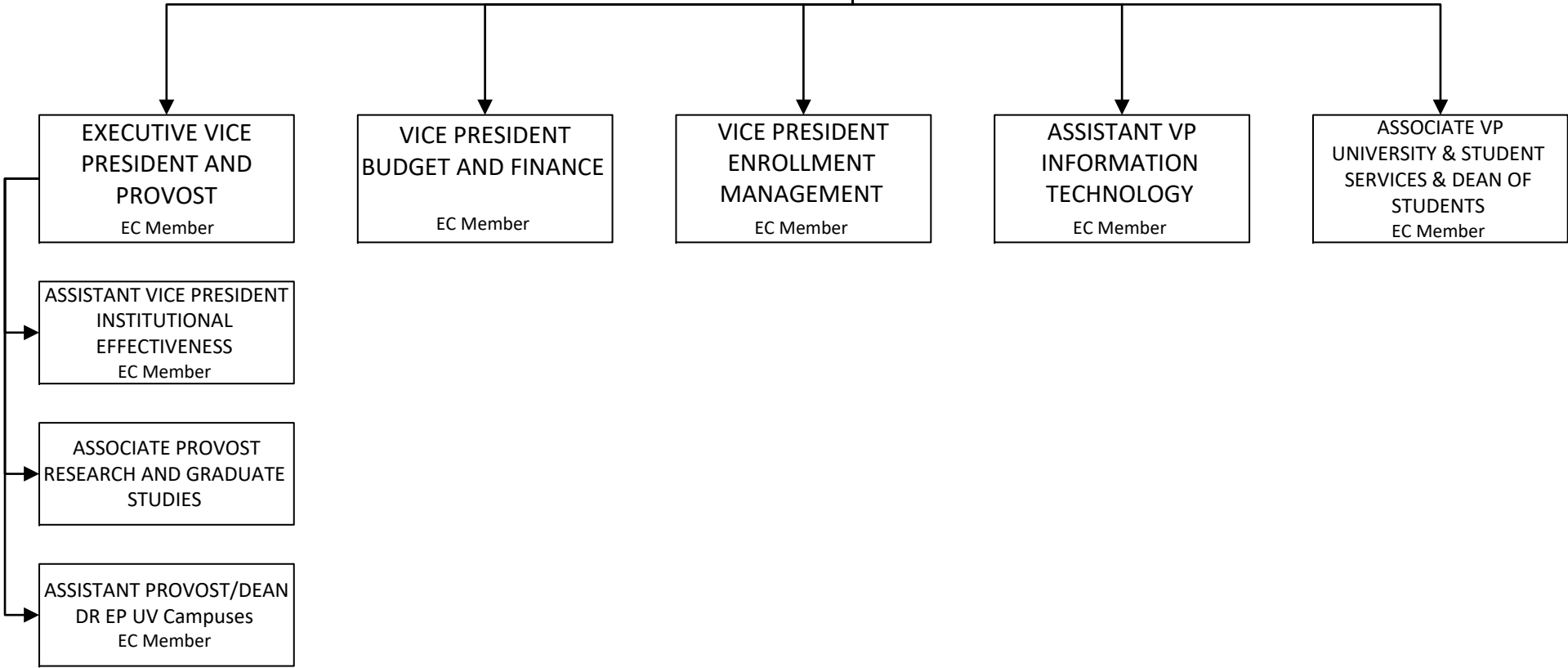


**TEXAS STATE UNIVERSITY SYSTEM
SUL ROSS STATE UNIVERSITY
EXECUTIVE ORGANIZATION
2019**

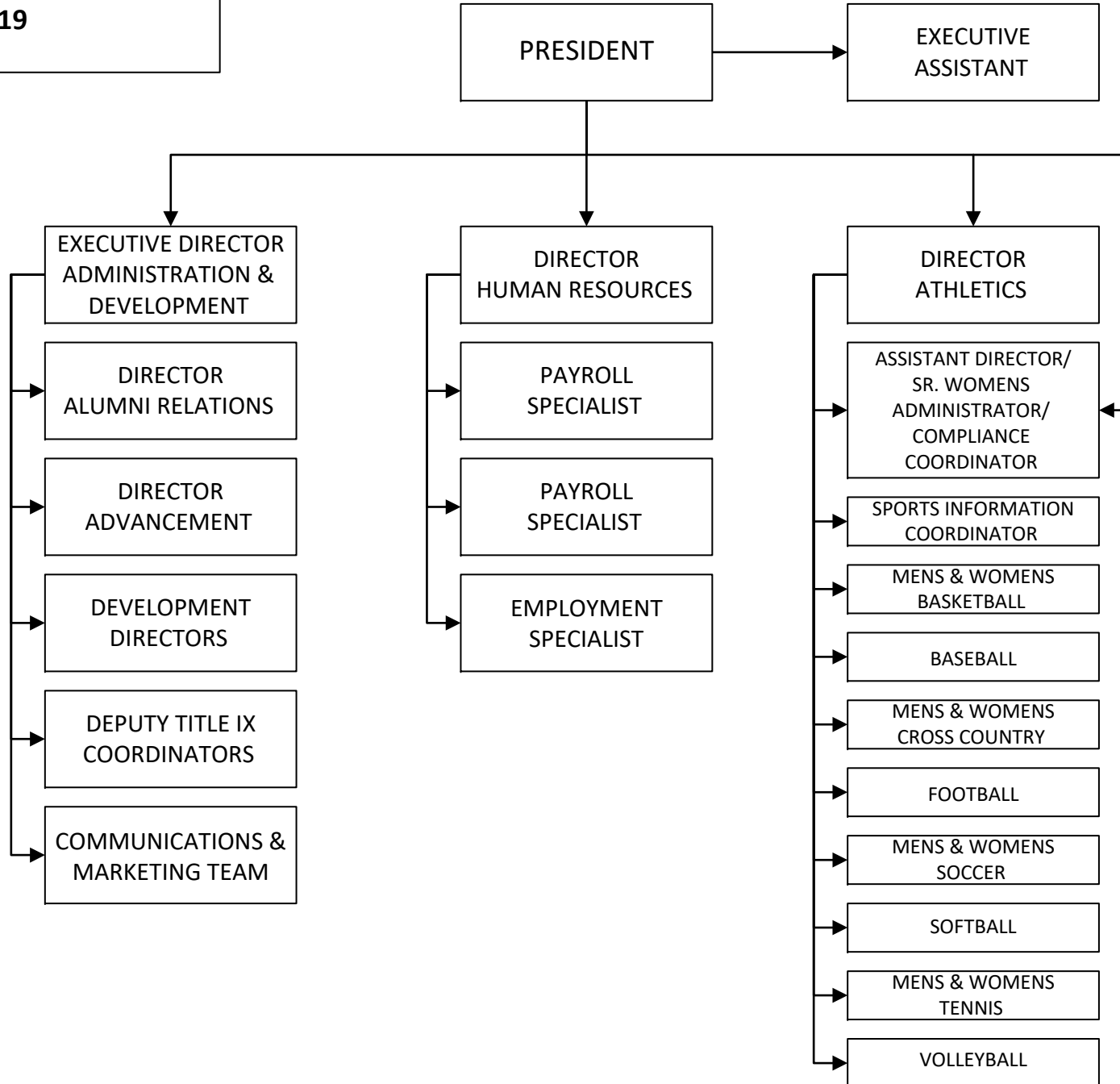
TSUS BOARD OF REGENTS → DIRECTOR
AUDITS AND ANALYSIS

↓
CHANCELLOR

↓
PRESIDENT → EXECUTIVE DIRECTOR
ADMINISTRATION &
DEVELOPMENT



**SUL ROSS STATE UNIVERSITY
PRESIDENT'S
SPECIAL REPORTS
2019**



**SUL ROSS STATE UNIVERSITY
ACADEMIC AFFAIRS
2019**

PRESIDENT

EXECUTIVE VICE PRESIDENT
AND PROVOST

EXECUTIVE ASSISTANT

ASSOCIATE PROVOST
RESEARCH &
GRADUATE STUDIES

DEAN
AGRICULTURAL &
NATURAL RESOURCE
SCIENCES

CHAIR
ANIMAL SCIENCE &
INDUSTRIAL
TECHNOLOGY

CHAIR
NATURAL RESOURCE
MANAGEMENT

DIRECTOR
BORDERLANDS
RESEARCH INSTITUTE

RODEO
COACH

UNIVERSITY RANCH
MANAGER

DEAN
ARTS & SCIENCES

CHAIR
BEHAVIORAL & SOCIAL
SCIENCES

CHAIR
BIOLOGY, GEOLOGY, &
PHYSICAL SCIENCES

CHAIR
COMPUTER SCIENCE &
MATHEMATICS

CHAIR
FINE ARTS &
COMMUNICATIONS

CHAIR
LANGUAGES AND
LITERATURE

DIRECTOR
ACADEMIC CENTER
FOR EXCELLENCE

DIRECTOR
RIO GRANDE
RESEARCH CENTER

DIRECTOR
NURSING

DEAN
EDUCATION &
PROFESSIONAL STUDIES

CHAIR
BUSINESS
ADMINISTRATION

CHAIR
EDUCATION

CHAIR
CRIMINAL JUSTICE

CHAIR
KINESIOLOGY/HEALTH &
HUMAN PERFORMANCE

LAW ENFORCEMENT
ACADEMY
TRAINING
COORDINATOR

DIRECTOR
SMALL BUSINESS
DEVELOPMENT CENTER

DEAN
LIBRARY & RESEARCH
TECHNOLOGIES

SENIOR ARCHIVIST
ARCHIVES OF
THE BIG BEND

LIBRARY SERVICES
LIBRARIAN

TECHNICAL SERVICES
LIBRARIAN

PUBLIC SERVICES
LIBRARIAN

COLLECTIONS
LIBRARIAN

ASSISTANT PROVOST
& DEAN
DR EP UV Campuses

CHAIR
BUSINESS
ADMINISTRATION

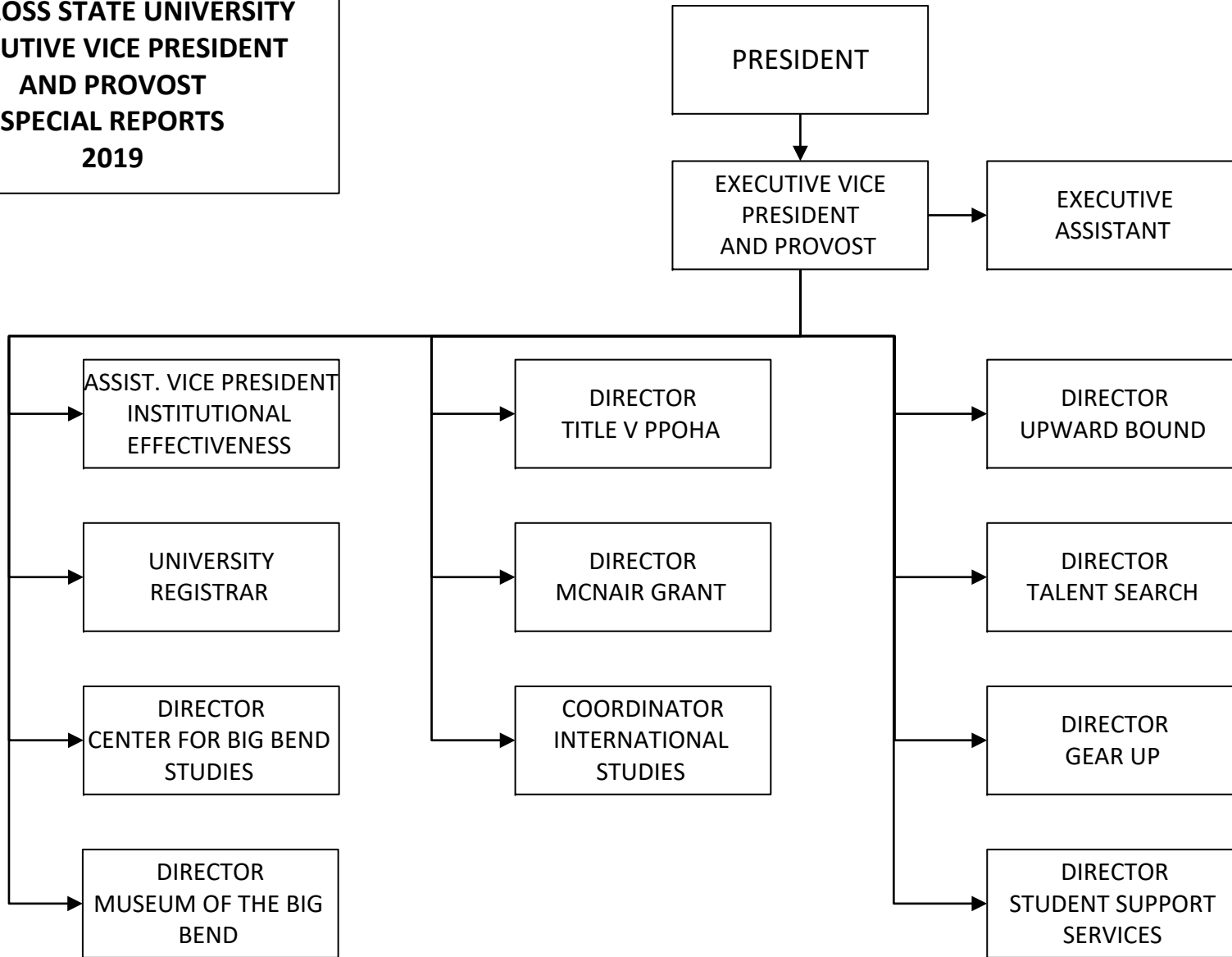
CHAIR
EDUCATION

CHAIR
HUMANITIES

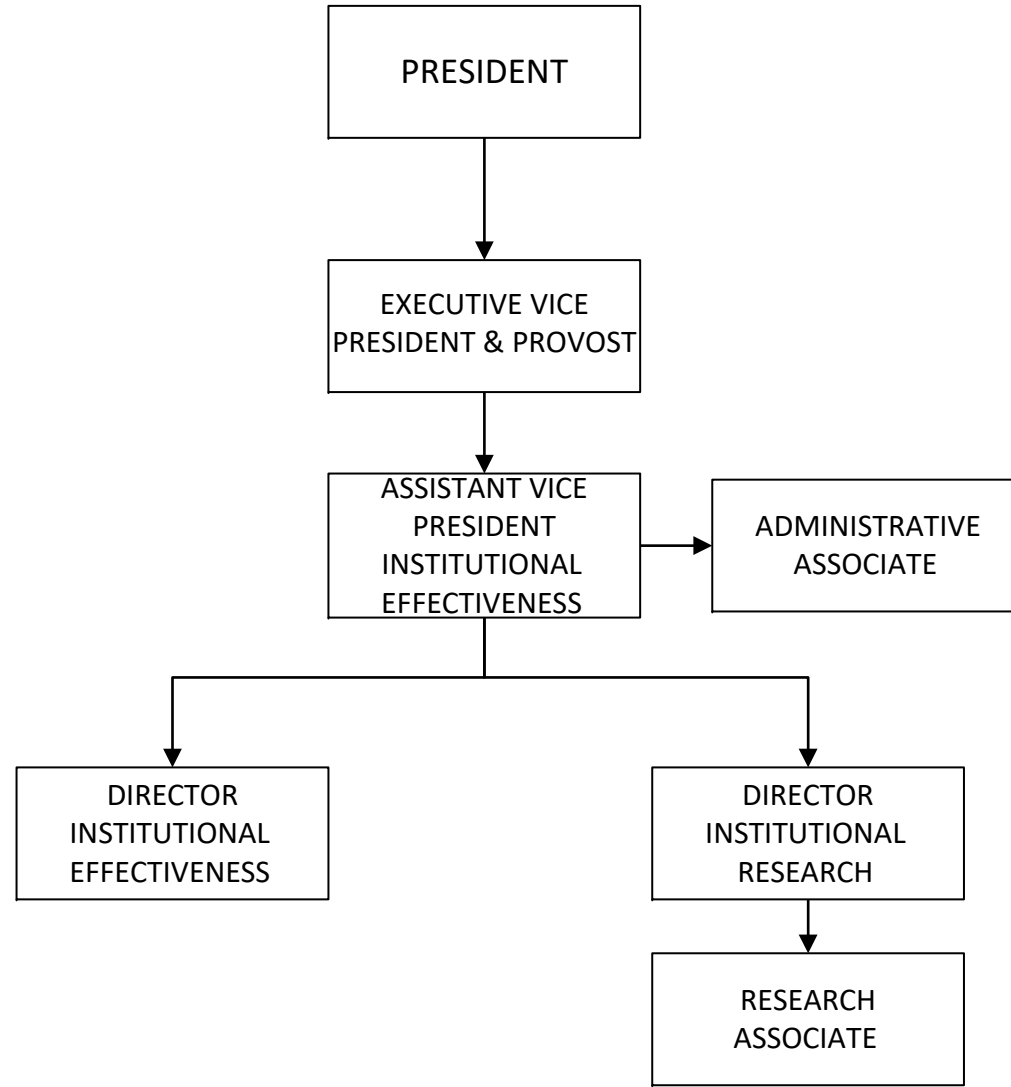
CHAIR
NATURAL BEHAVIORAL
SCIENCES

DIRECTOR
NURSING

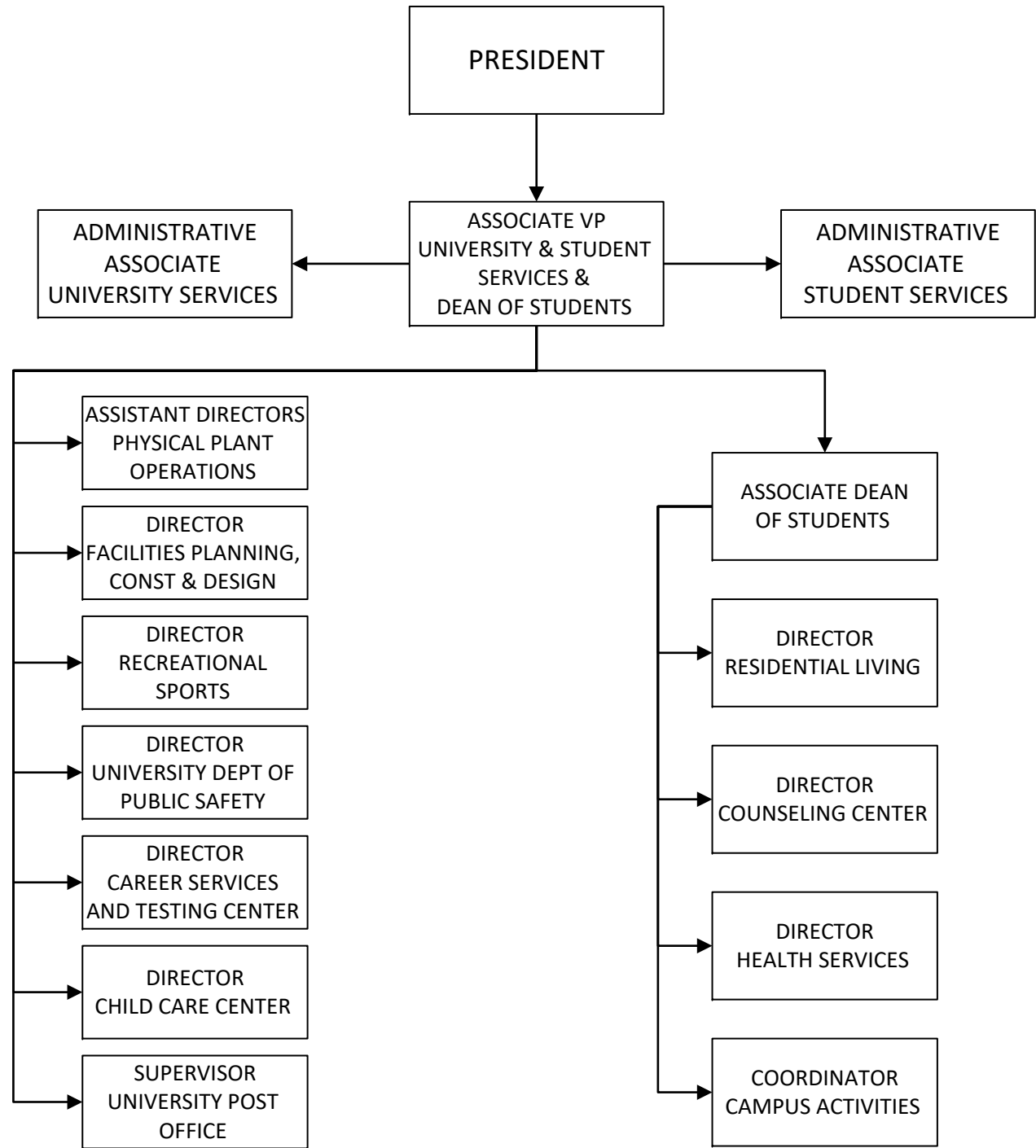
**SUL ROSS STATE UNIVERSITY
EXECUTIVE VICE PRESIDENT
AND PROVOST
SPECIAL REPORTS
2019**



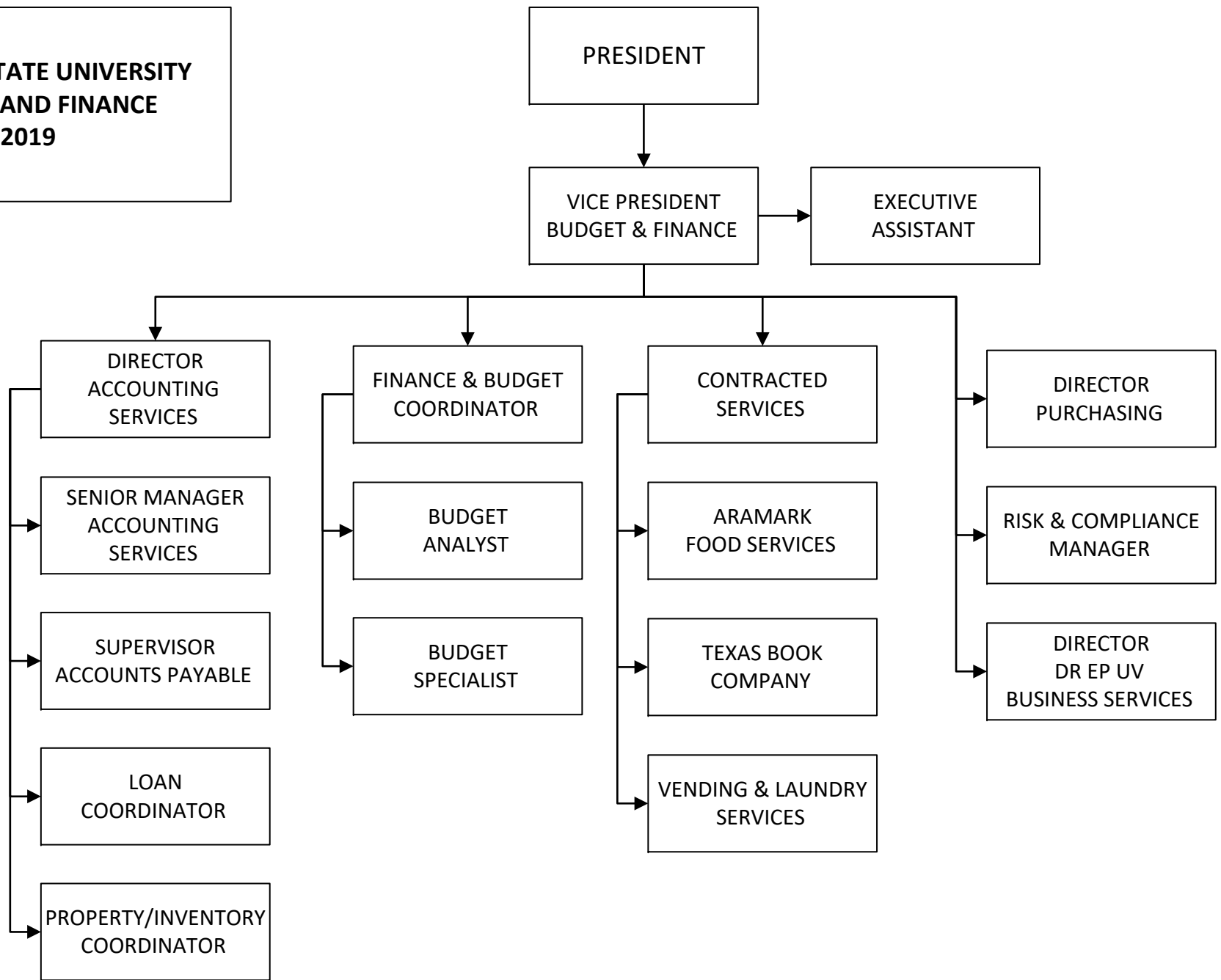
**SUL ROSS STATE UNIVERSITY
INSTITUTIONAL EFFECTIVENESS
2019**



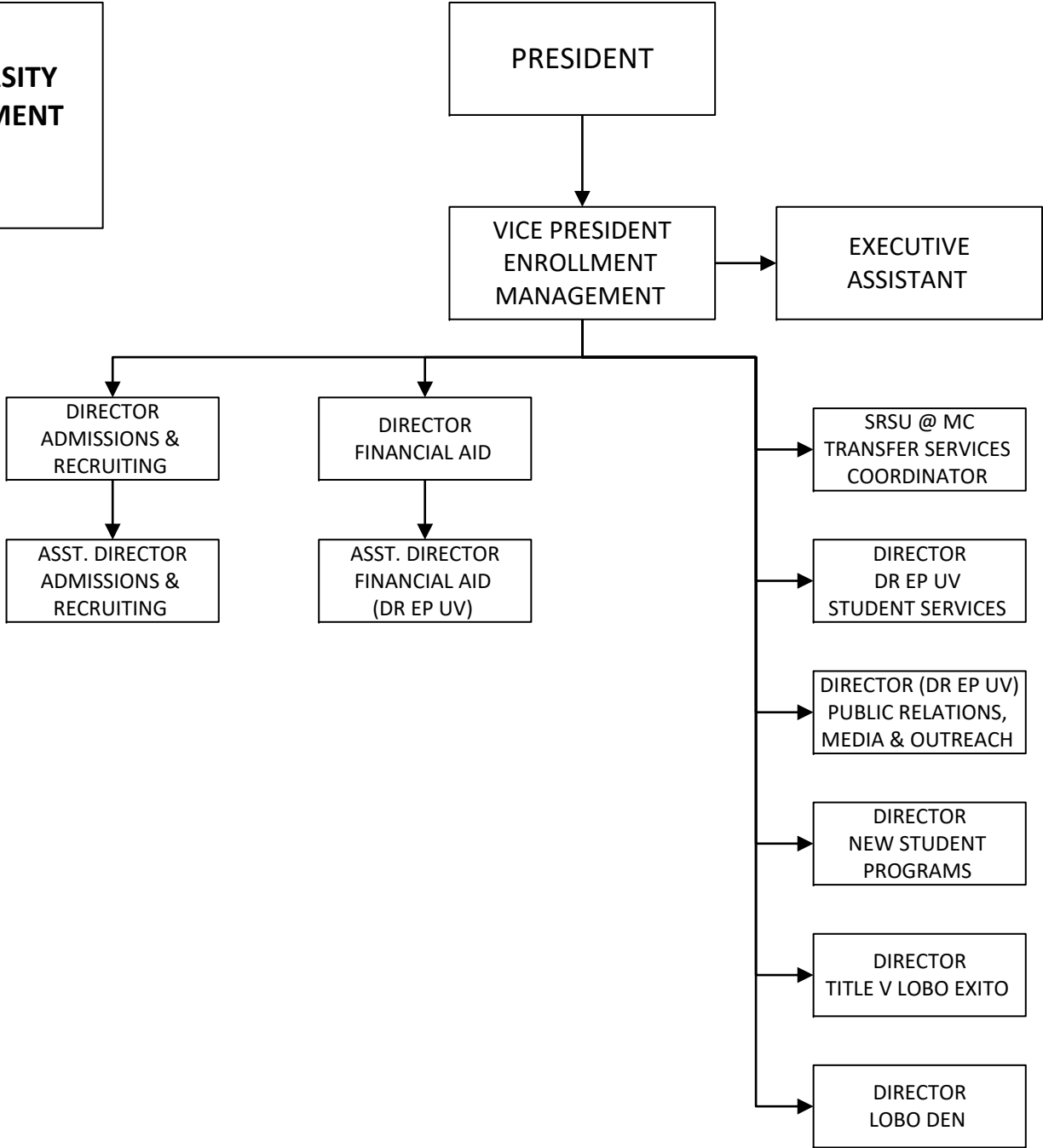
**SUL ROSS STATE UNIVERSITY
UNIVERSITY AND STUDENT
SERVICES
AND DEAN OF STUDENTS
2019**



**SUL ROSS STATE UNIVERSITY
BUDGET AND FINANCE
2019**

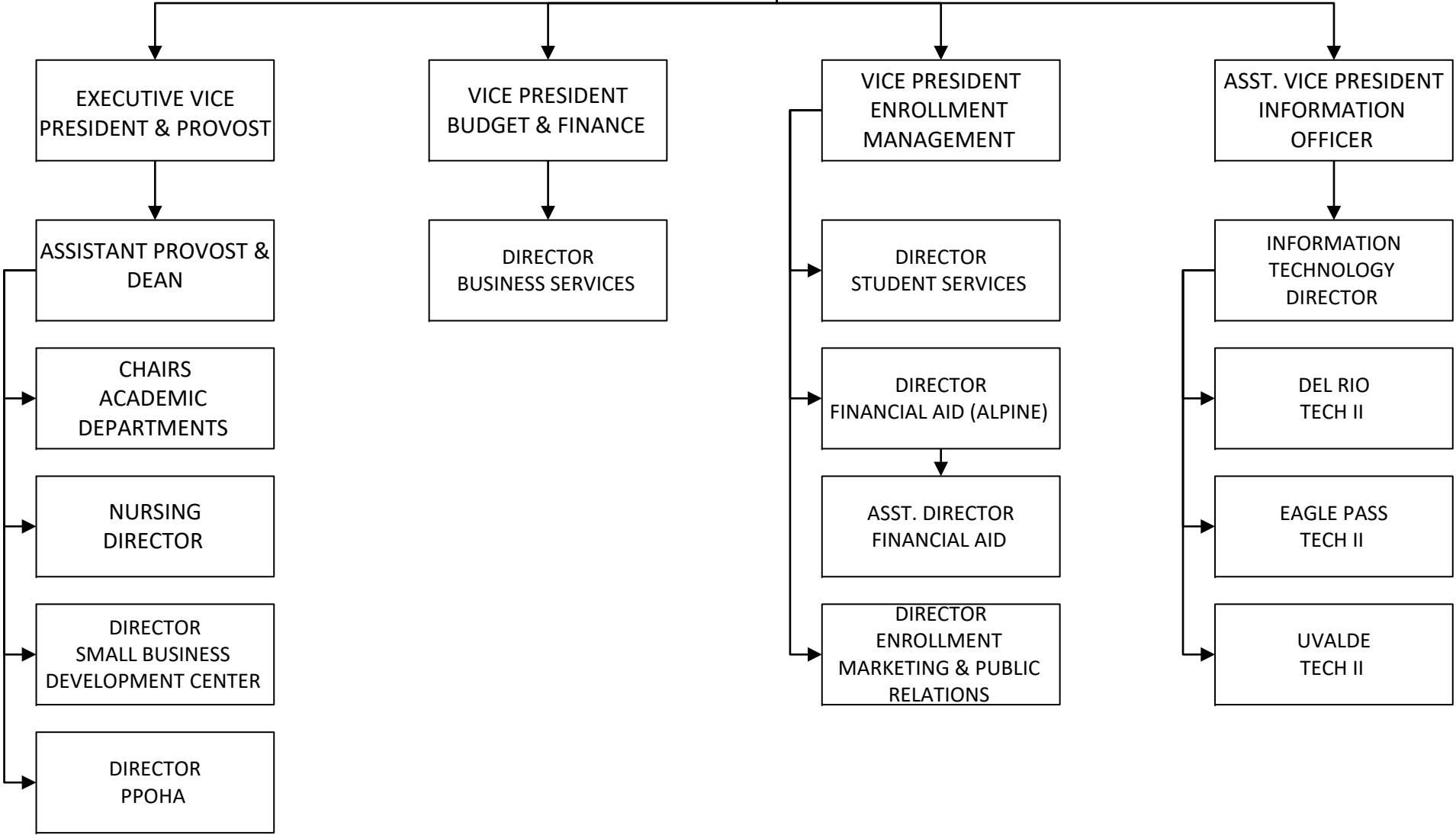


**SUL ROSS STATE UNIVERSITY
ENROLLMENT MANAGEMENT
2019**



**SUL ROSS STATE UNIVERSITY
DEL RIO • EAGLE PASS • UVALDE
2019**

PRESIDENT



**SUL ROSS STATE UNIVERSITY
INFORMATION TECHNOLOGY
2019**

